

120°36.00'E

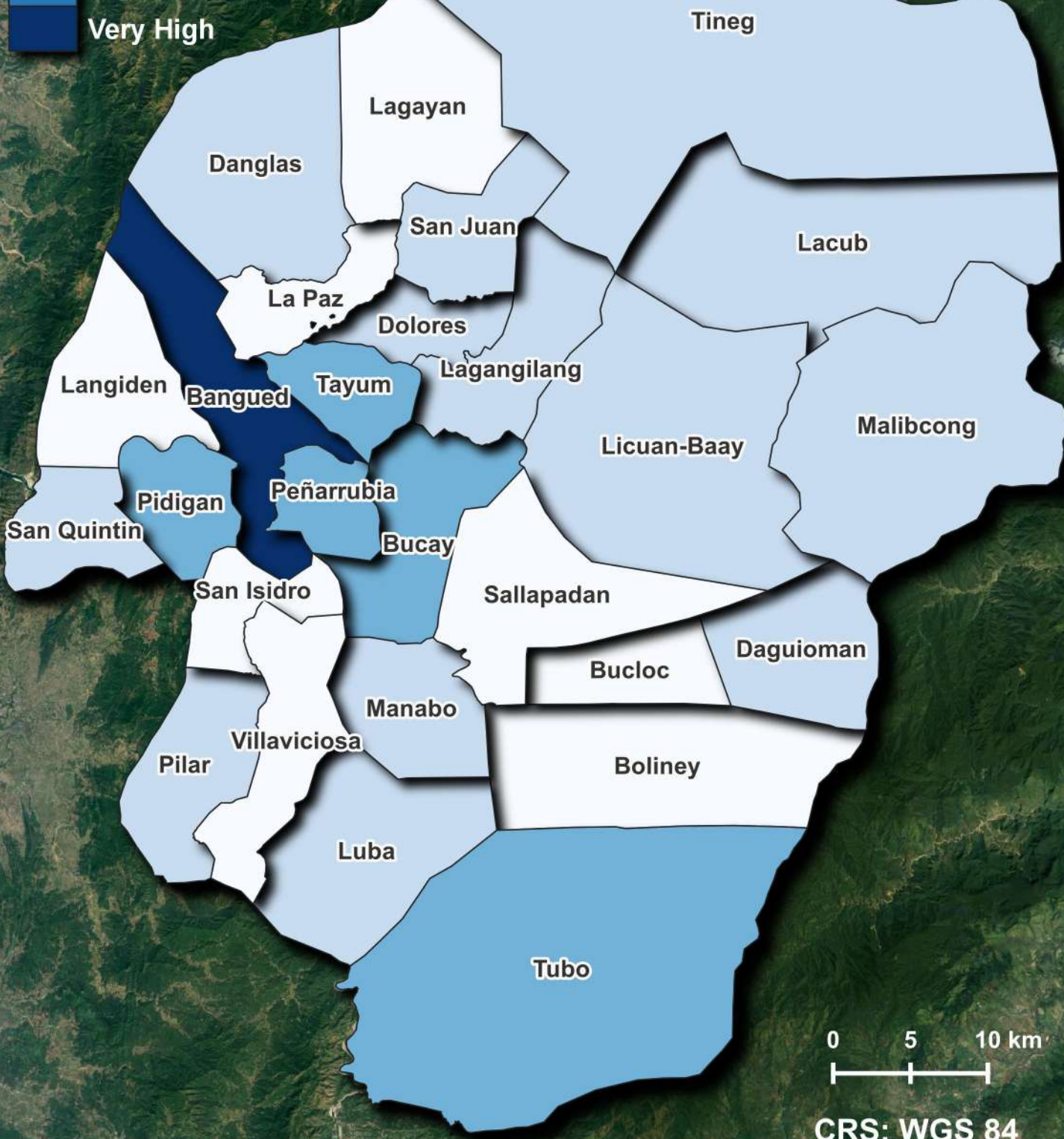
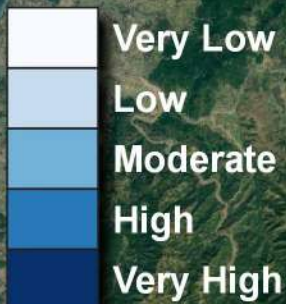
120°48.00'E

121°0.00'E

# ABRA PROVINCE OVERALL ADAPTIVE CAPACITY



## LEGEND:



CRS: WGS 84

120°36.00'E

120°48.00'E

121°0.00'E

18°0.00'N

18°0.00'N

17°48.00'N

17°48.00'N

17°36.00'N

17°36.00'N

17°24.00'N

17°24.00'N

17°12.00'N

17°12.00'N

120°36.00'E

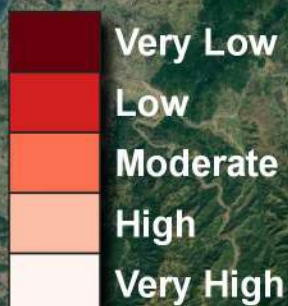
120°48.00'E

121°0.00'E

# ABRA PROVINCE INVERTED ADAPTIVE CAPACITY



## LEGEND:



18°0.00'N

18°0.00'N

17°48.00'N

17°48.00'N

17°36.00'N

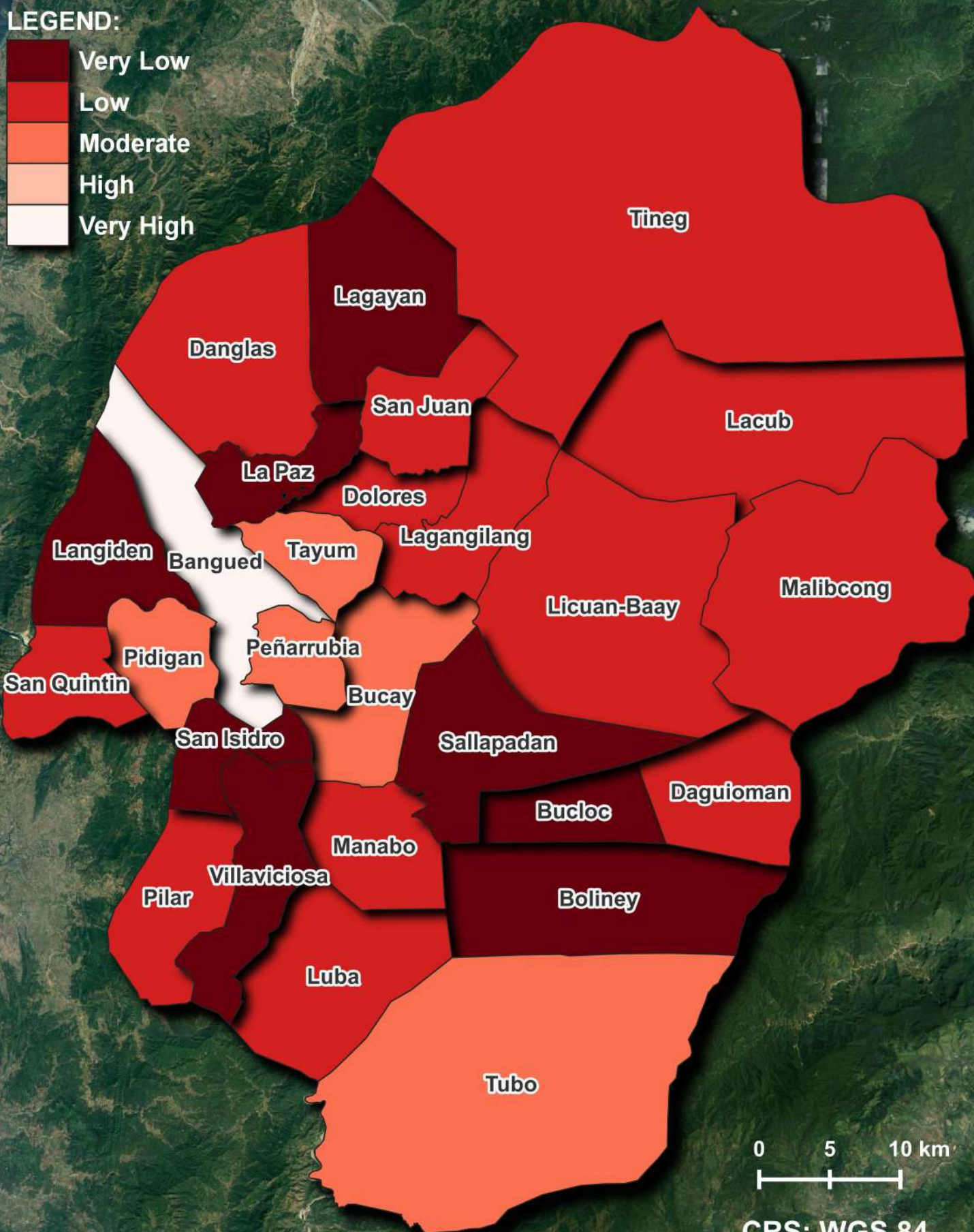
17°36.00'N

17°24.00'N

17°24.00'N

17°12.00'N

17°12.00'N



CRS: WGS 84

120°36.00'E

120°48.00'E

121°0.00'E

120°36.00'E

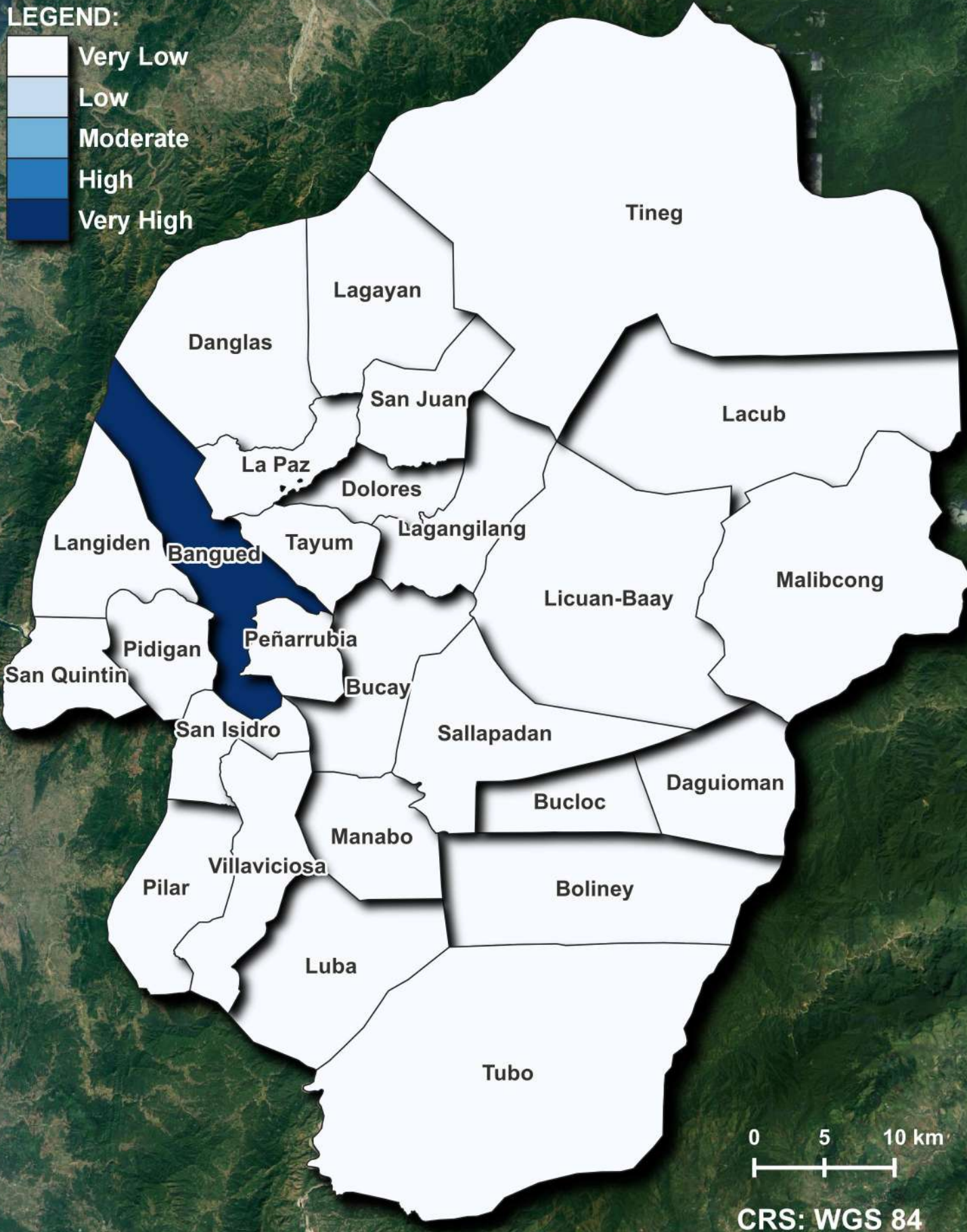
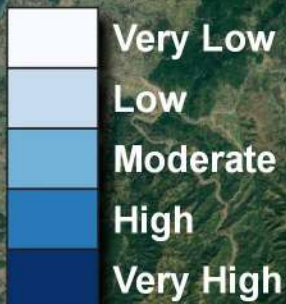
120°48.00'E

121°0.00'E

# ABRA PROVINCE ADAPTIVE CAPACITY: HUMAN CAPITAL



## LEGEND:



CRS: WGS 84

120°36.00'E

120°48.00'E

121°0.00'E

18°0.00'N

18°0.00'N

17°48.00'N

17°48.00'N

17°36.00'N

17°36.00'N

17°24.00'N

17°24.00'N

17°12.00'N

17°12.00'N

120°36.00'E

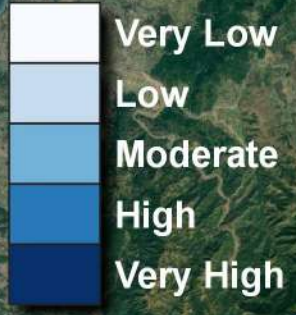
120°48.00'E

121°0.00'E

# ABRA PROVINCE ADAPTIVE CAPACITY: INSTITUTIONAL CAPITAL

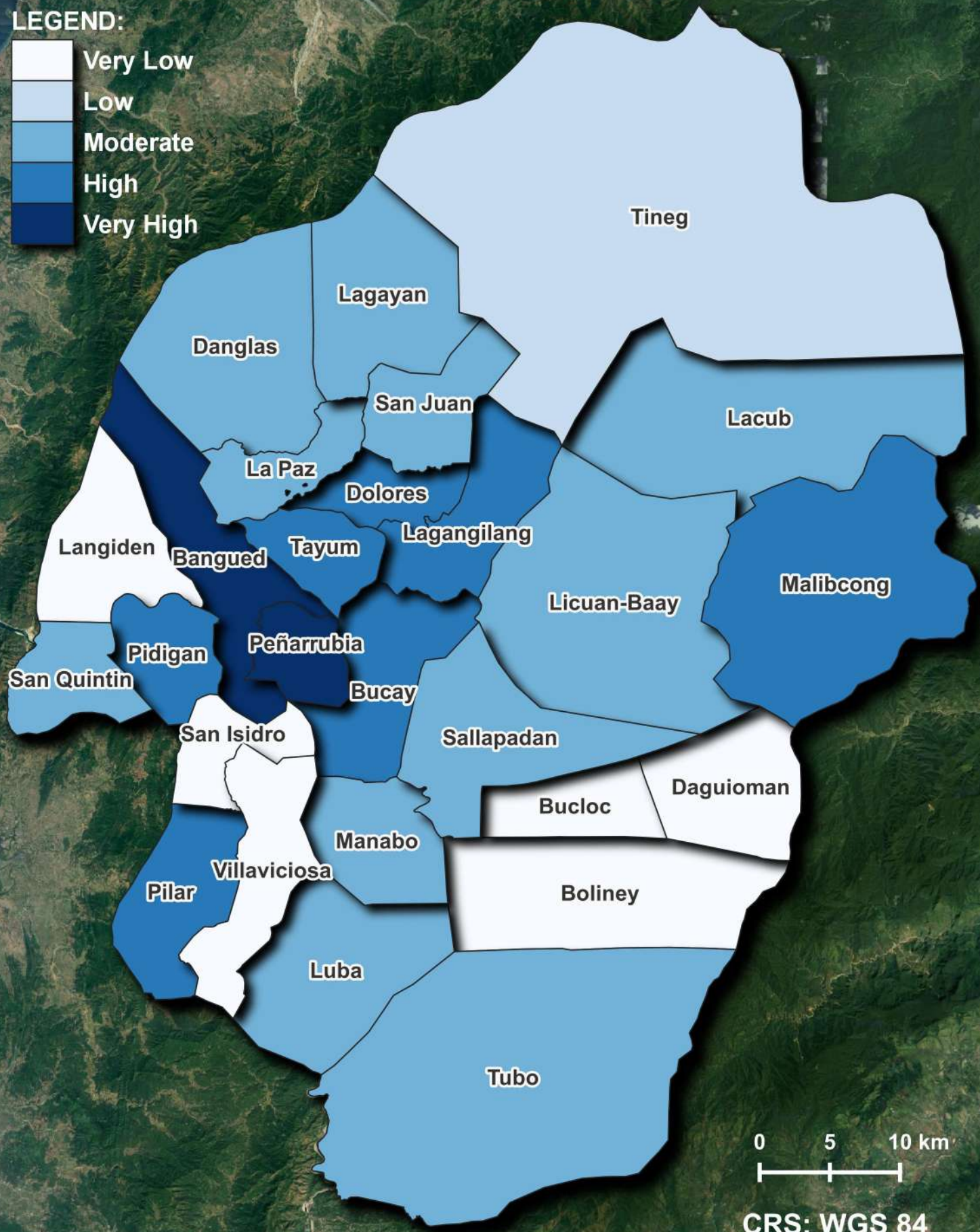


## LEGEND:



18°0.00'N  
17°48.00'N  
17°36.00'N  
17°24.00'N  
17°12.00'N

18°0.00'N  
17°48.00'N  
17°36.00'N  
17°24.00'N  
17°12.00'N



CRS: WGS 84

120°36.00'E

120°48.00'E

121°0.00'E

120°36.00'E

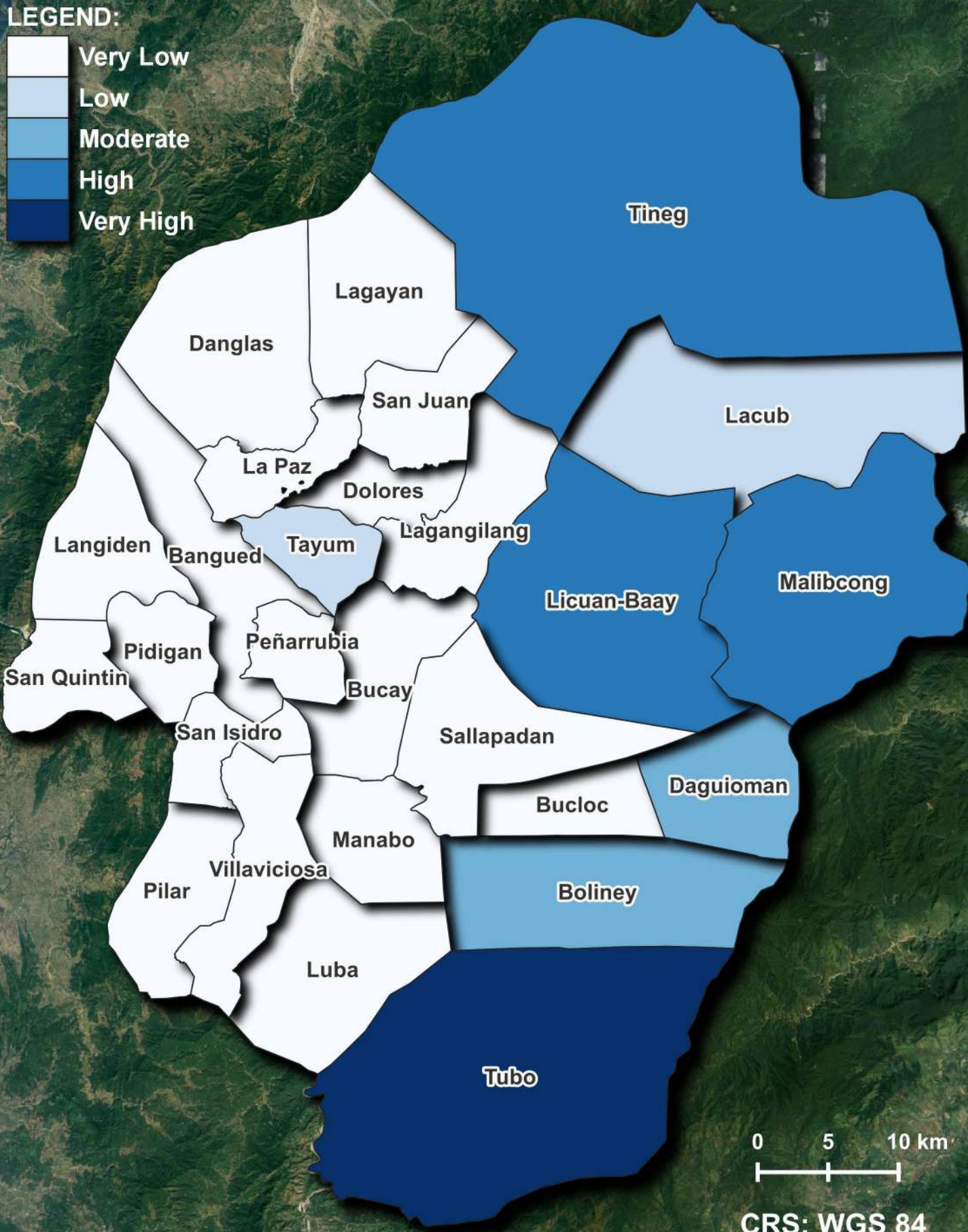
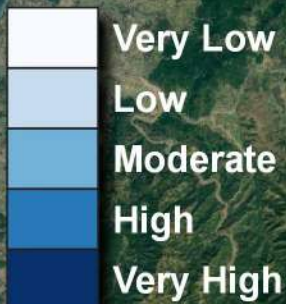
120°48.00'E

121°0.00'E

# ABRA PROVINCE ADAPTIVE CAPACITY: NATURAL CAPITAL



## LEGEND:



CRS: WGS 84

120°36.00'E

120°48.00'E

121°0.00'E

18°0.00'N

18°0.00'N

17°48.00'N

17°48.00'N

17°36.00'N

17°36.00'N

17°24.00'N

17°24.00'N

17°12.00'N

17°12.00'N

120°36.00'E

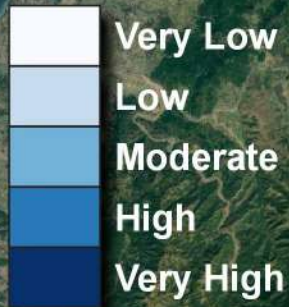
120°48.00'E

121°0.00'E

# ABRA PROVINCE ADAPTIVE CAPACITY: PHYSICAL CAPITAL



## LEGEND:



18°0.00'N

18°0.00'N

17°48.00'N

17°48.00'N

17°36.00'N

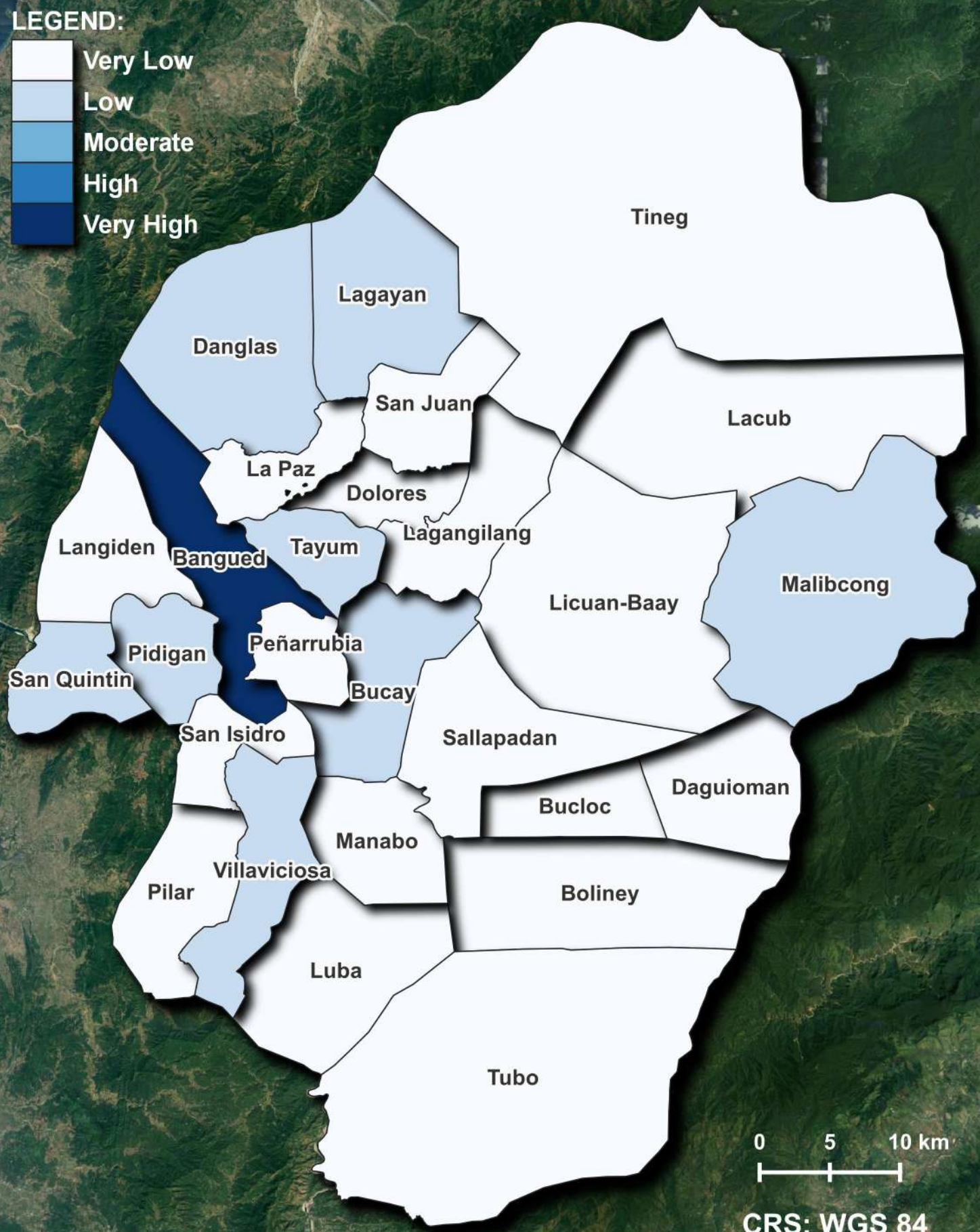
17°36.00'N

17°24.00'N

17°24.00'N

17°12.00'N

17°12.00'N



CRS: WGS 84

120°36.00'E

120°48.00'E

121°0.00'E

120°36.00'E

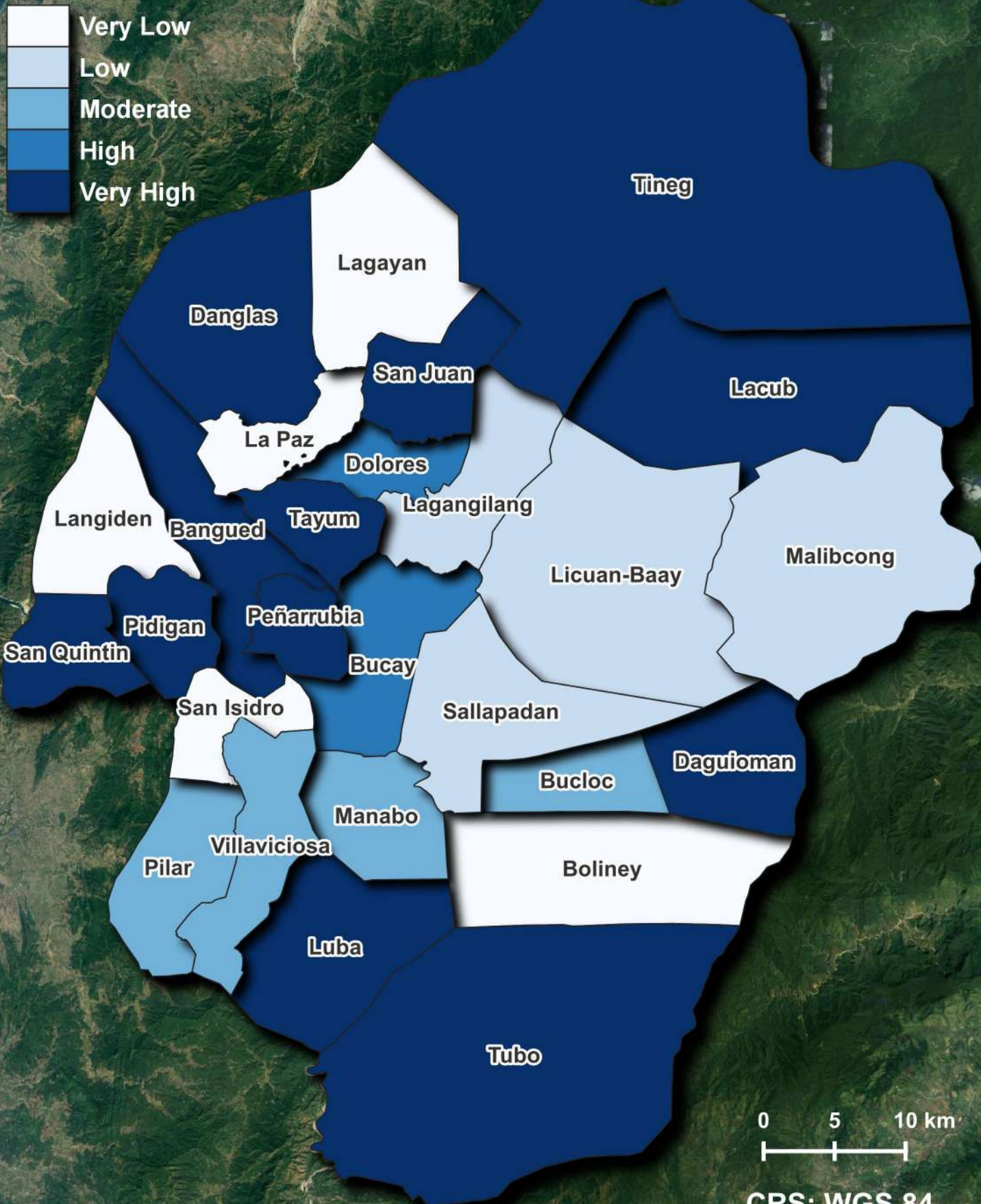
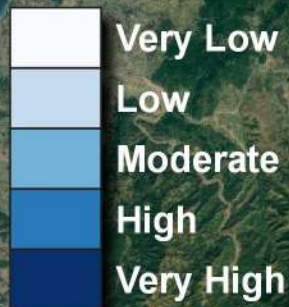
120°48.00'E

121°0.00'E

# ABRA PROVINCE ADAPTIVE CAPACITY: ANTICIPATORY CAPITAL



## LEGEND:



CRS: WGS 84

120°36.00'E

120°48.00'E

121°0.00'E

18°0.00'N

18°0.00'N

17°48.00'N

17°48.00'N

17°36.00'N

17°36.00'N

17°24.00'N

17°24.00'N

17°12.00'N

17°12.00'N

120°36.00'E

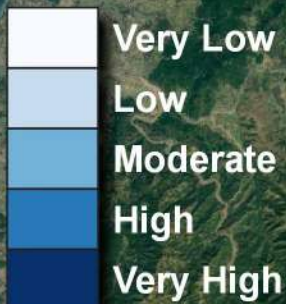
120°48.00'E

121°0.00'E

# ABRA PROVINCE ADAPTIVE CAPACITY: ECONOMIC CAPITAL



## LEGEND:



18°0.00'N

18°0.00'N

17°48.00'N

17°48.00'N

17°36.00'N

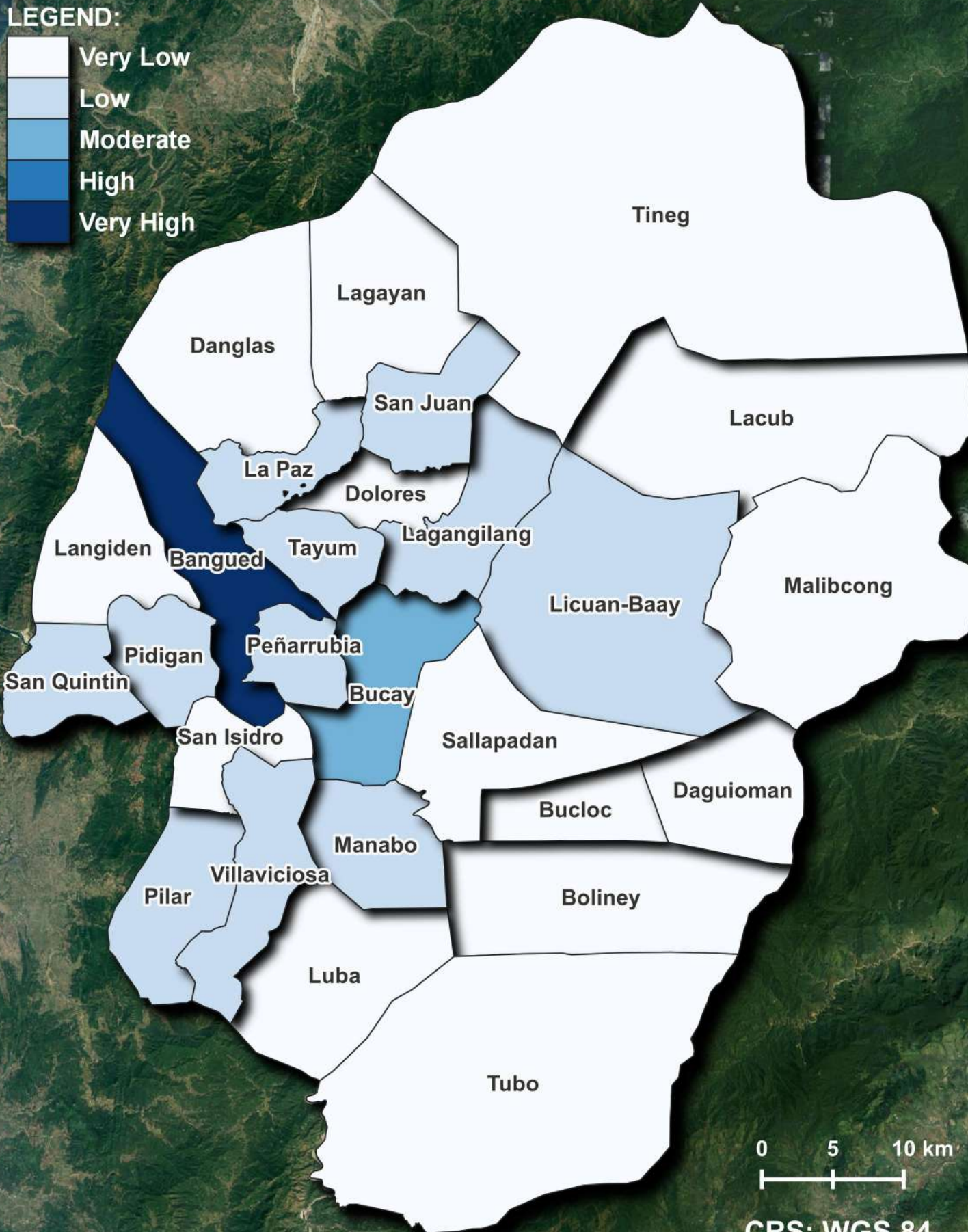
17°36.00'N

17°24.00'N

17°24.00'N

17°12.00'N

17°12.00'N



CRS: WGS 84

120°36.00'E

120°48.00'E

121°0.00'E