

121°0.0'

121°12.0'

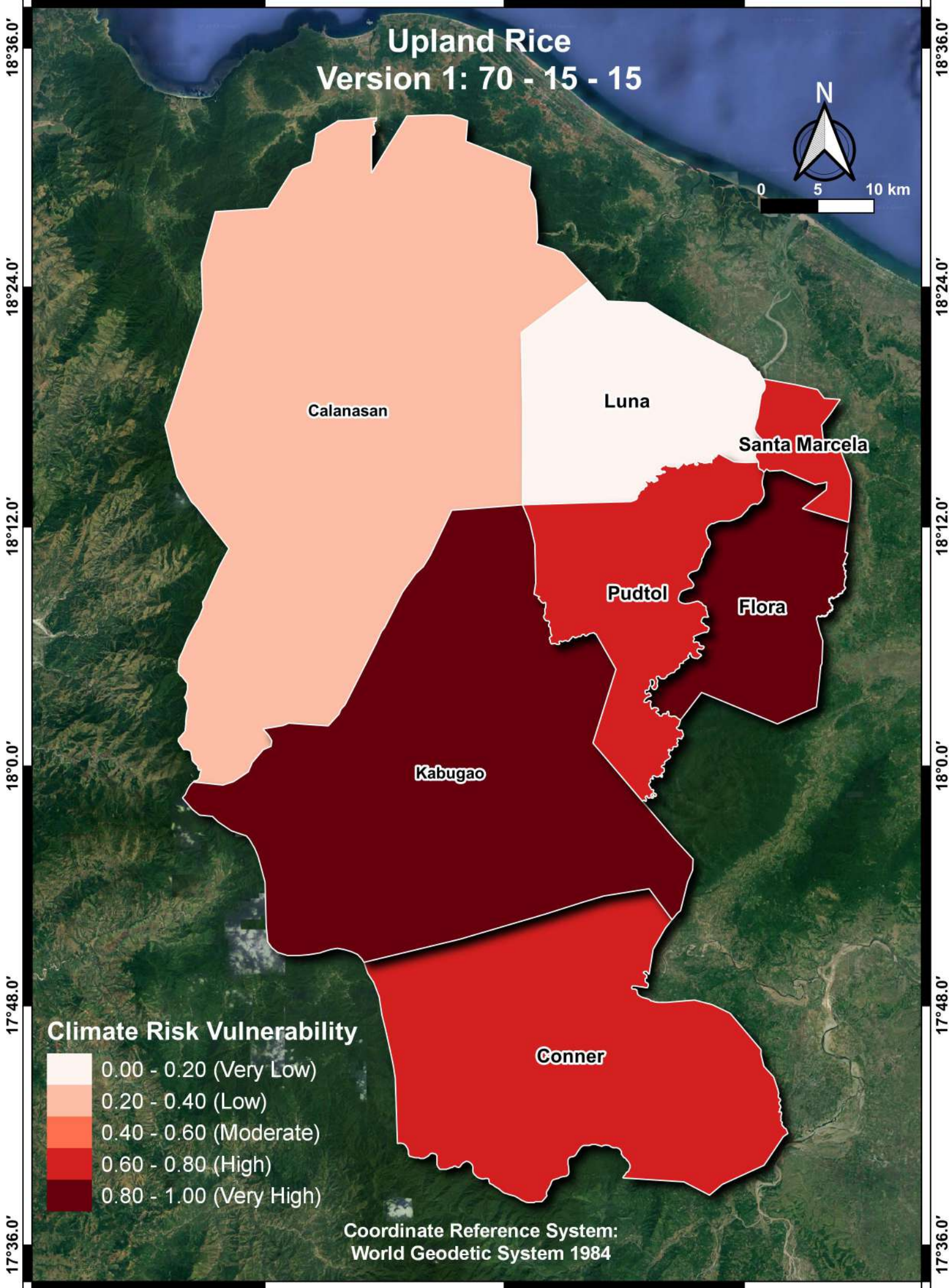
121°24.0'

Upland Rice

Version 1: 70 - 15 - 15



0 5 10 km



18°36.0'
18°24.0'
18°12.0'
18°0.0'
17°48.0'
17°36.0'

18°36.0'
18°24.0'
18°12.0'
18°0.0'
17°48.0'
17°36.0'

Calanasan

Luna

Santa Marcela

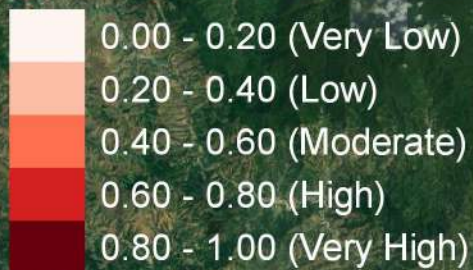
Pudtol

Flora

Kabugao

Conner

Climate Risk Vulnerability



Coordinate Reference System:
World Geodetic System 1984

121°0.0'

121°12.0'

121°24.0'

121°0.0'

121°12.0'

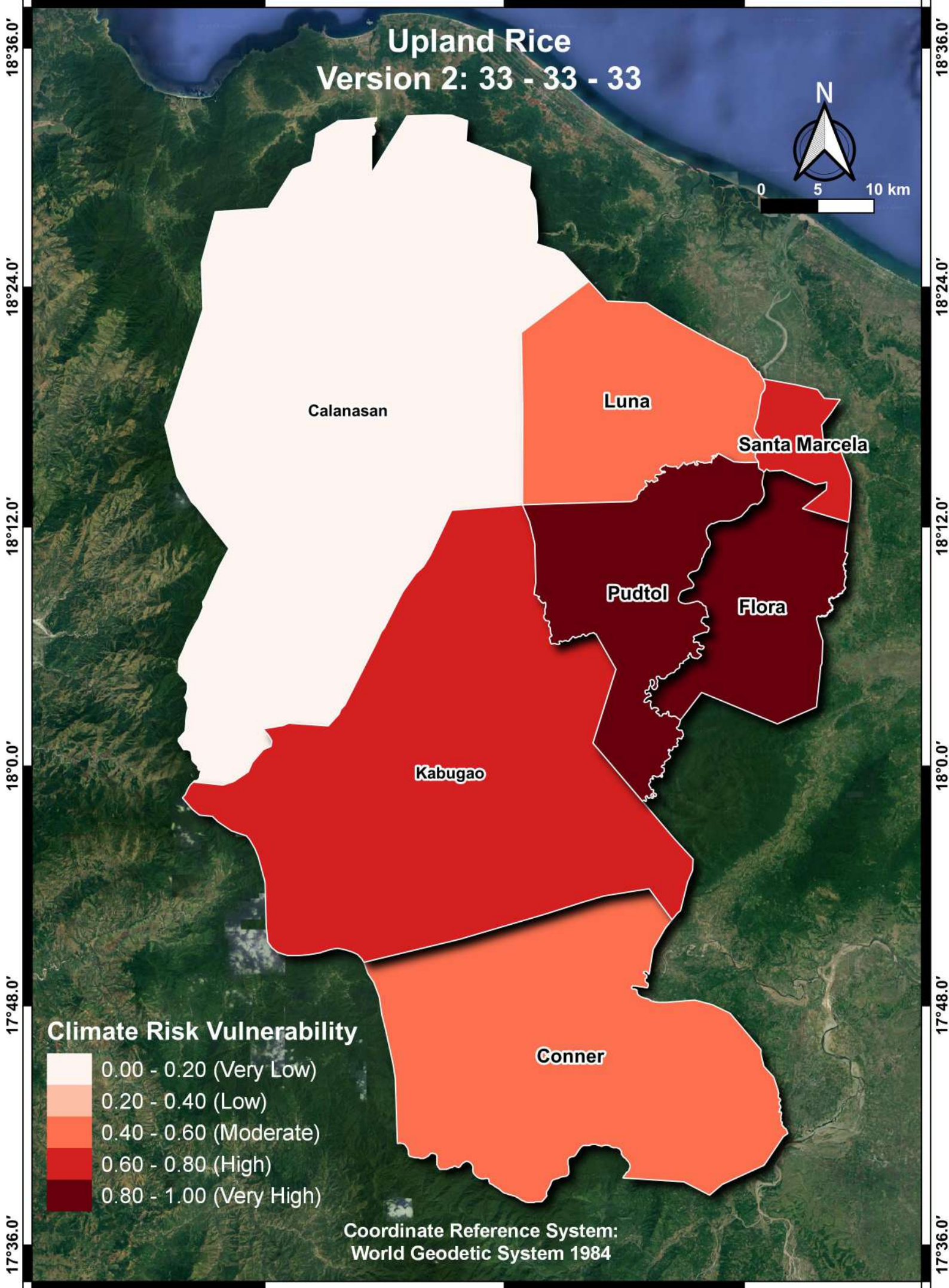
121°24.0'

Upland Rice

Version 2: 33 - 33 - 33



0 5 10 km



Calanasan

Luna

Santa Marcela

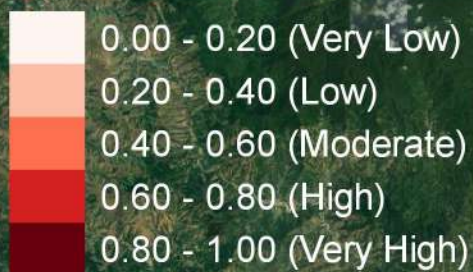
Pudtol

Flora

Kabugao

Conner

Climate Risk Vulnerability



Coordinate Reference System:
World Geodetic System 1984

18°36.0'

18°24.0'

18°12.0'

18°0.0'

17°48.0'

17°36.0'

18°36.0'

18°24.0'

18°12.0'

18°0.0'

17°48.0'

17°36.0'

121°0.0'

121°12.0'

121°24.0'

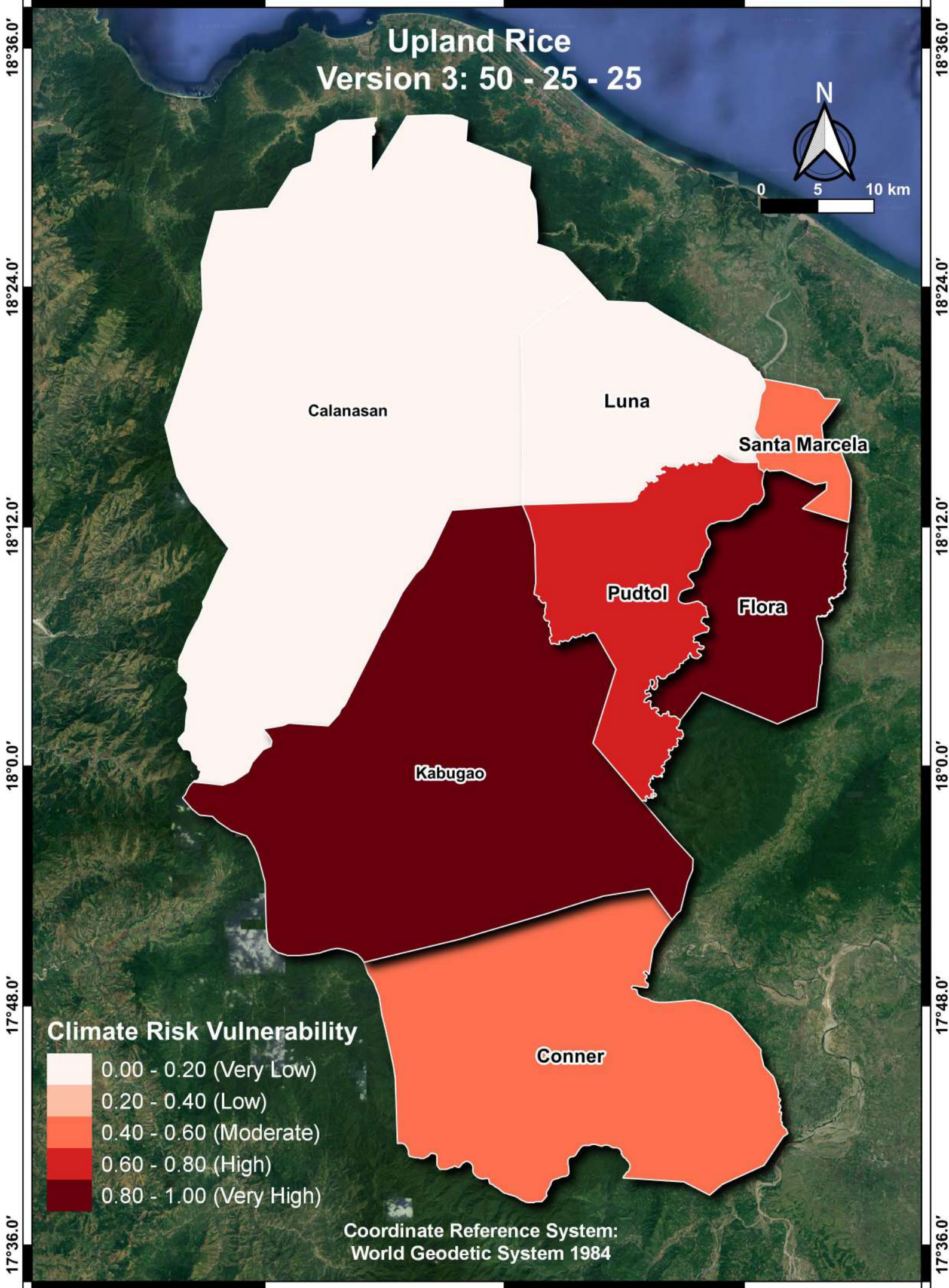
121°0.0'

121°12.0'

121°24.0'

Upland Rice

Version 3: 50 - 25 - 25



Calanasan

Luna

Santa Marcela

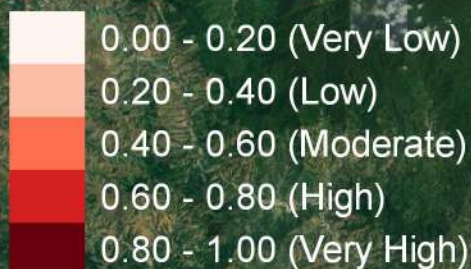
Pudtol

Flora

Kabugao

Conner

Climate Risk Vulnerability



Coordinate Reference System:
World Geodetic System 1984

18°36.0'

18°24.0'

18°12.0'

18°0.0'

17°48.0'

17°36.0'

18°36.0'

18°24.0'

18°12.0'

18°0.0'

17°48.0'

17°36.0'

121°0.0'

121°12.0'

121°24.0'

121°0.0'

121°12.0'

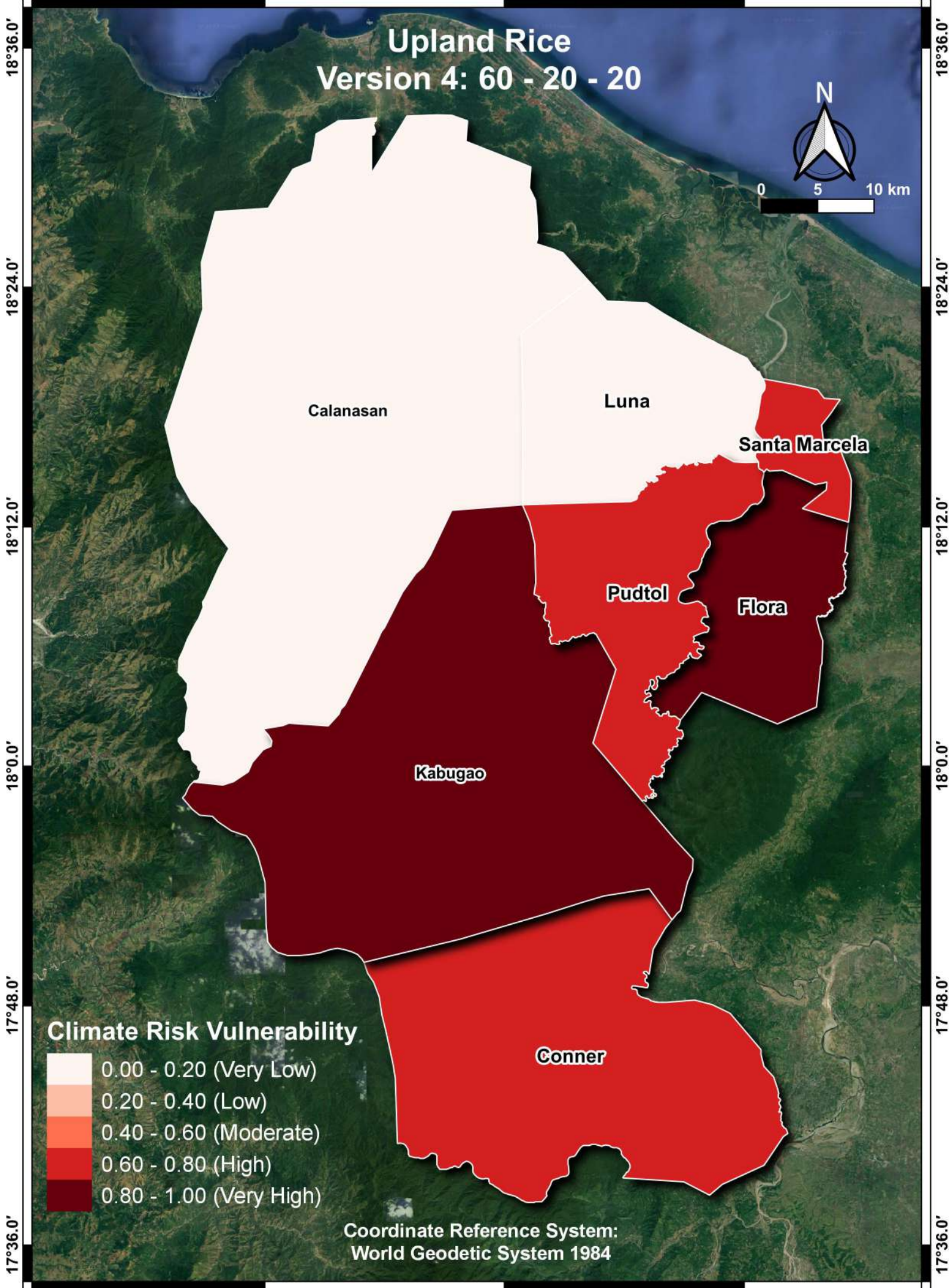
121°24.0'

Upland Rice

Version 4: 60 - 20 - 20



0 5 10 km



Calanasan

Luna

Santa Marcela

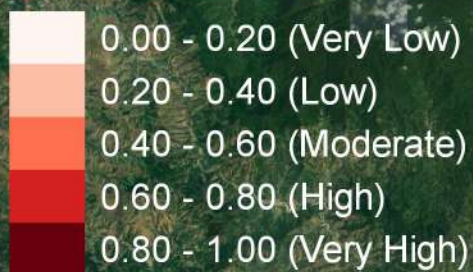
Pudtol

Flora

Kabugao

Conner

Climate Risk Vulnerability



Coordinate Reference System:
World Geodetic System 1984

121°0.0'

121°12.0'

121°24.0'

18°36.0'

18°24.0'

18°12.0'

18°0.0'

17°48.0'

17°36.0'

18°36.0'

18°24.0'

18°12.0'

18°0.0'

17°48.0'

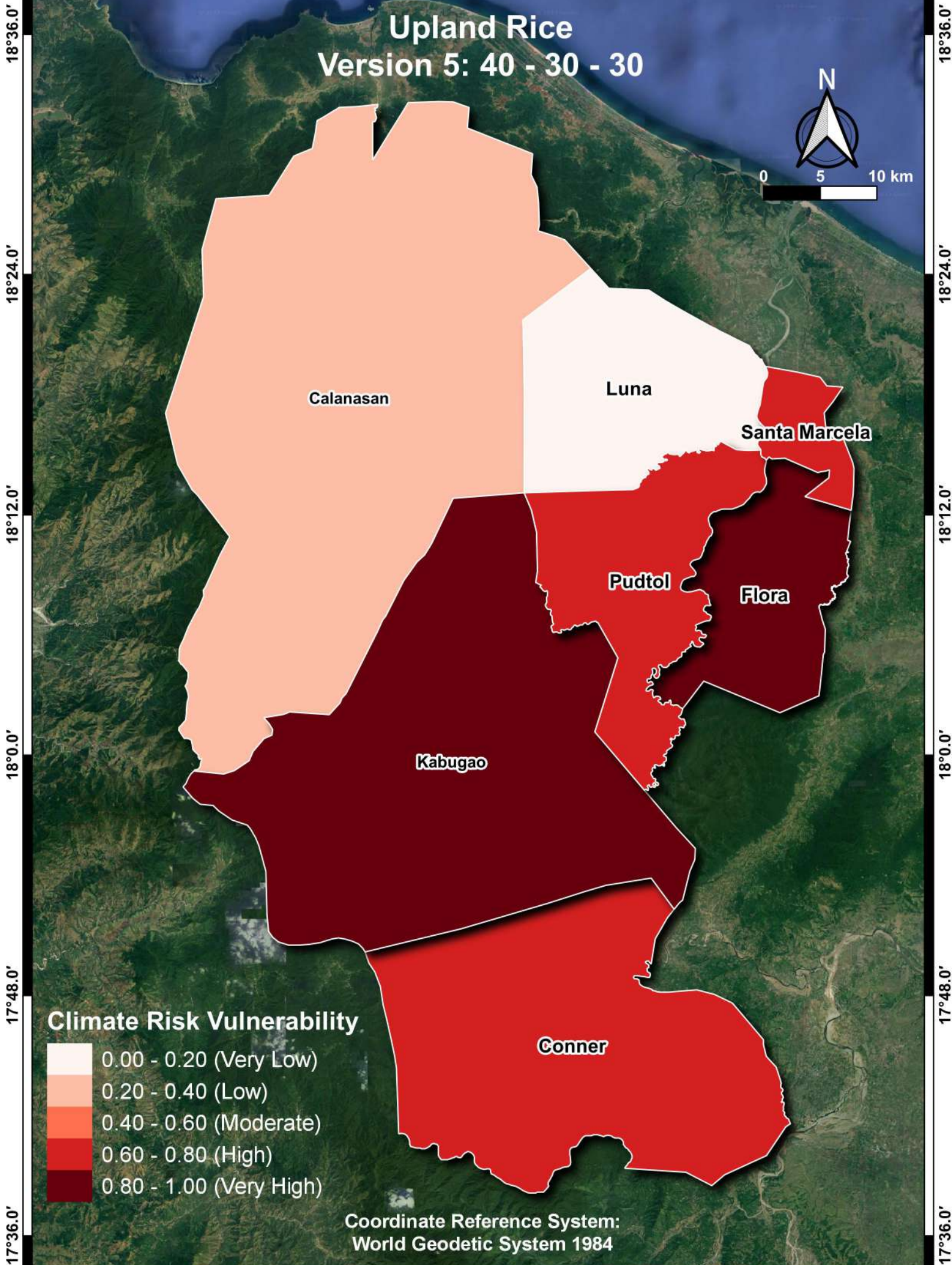
17°36.0'

121°0.0'

121°12.0'

121°24.0'

Upland Rice Version 5: 40 - 30 - 30



Calanasan

Luna

Santa Marcela

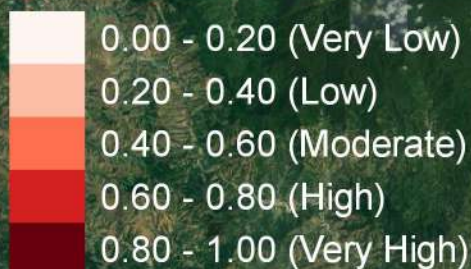
Pudtol

Flora

Kabugao

Conner

Climate Risk Vulnerability



Coordinate Reference System:
World Geodetic System 1984

18°36.0'

18°24.0'

18°12.0'

18°0.0'

17°48.0'

17°36.0'

18°36.0'

18°24.0'

18°12.0'

18°0.0'

17°48.0'

17°36.0'

121°0.0'

121°12.0'

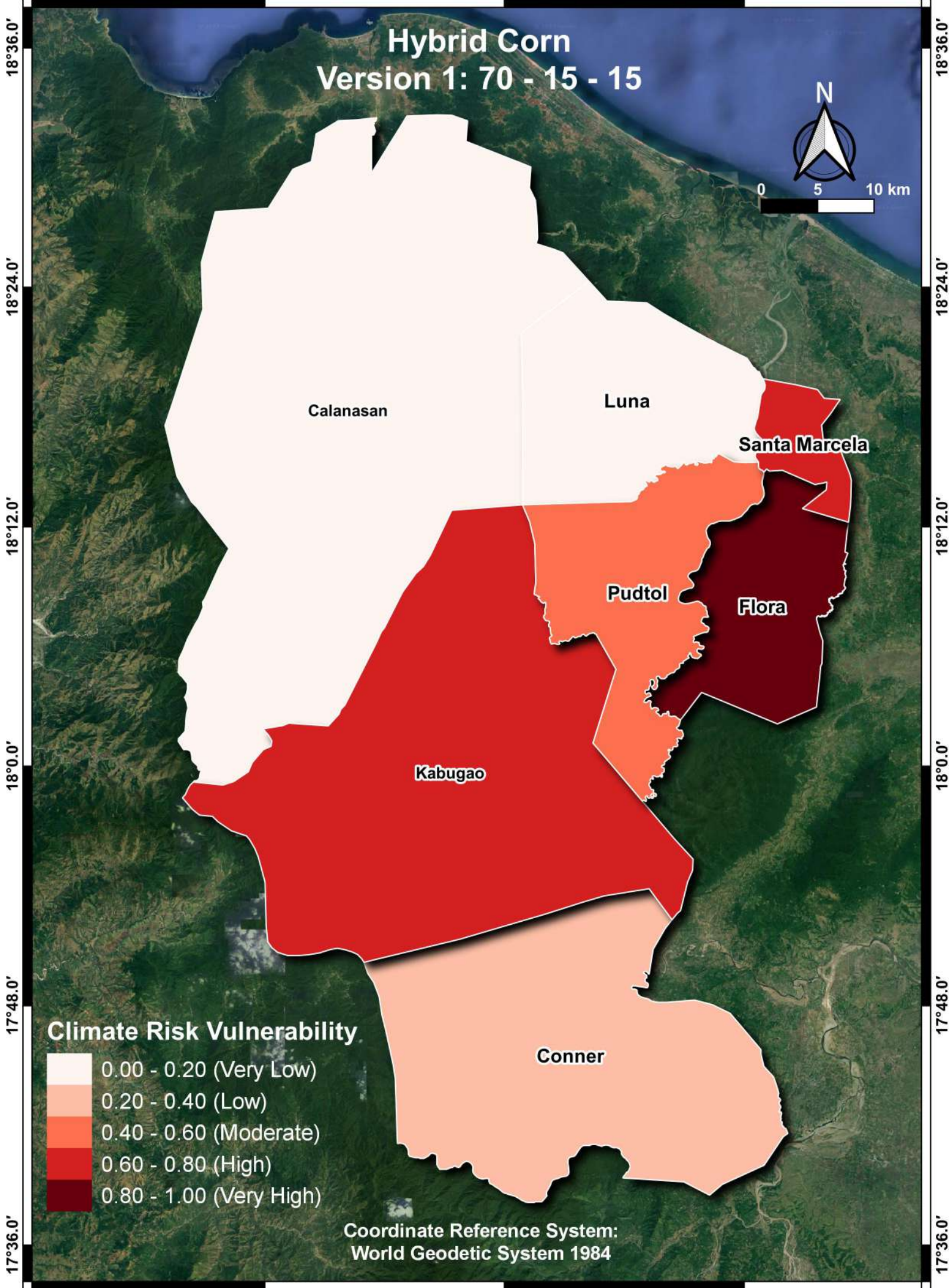
121°24.0'

121°0.0'

121°12.0'

121°24.0'

Hybrid Corn Version 1: 70 - 15 - 15



Calanasan

Luna

Santa Marcela

Pudtol

Flora

Kabugao

Conner

Climate Risk Vulnerability



Coordinate Reference System:
World Geodetic System 1984

18°36.0'

18°24.0'

18°12.0'

18°0.0'

17°48.0'

17°36.0'

18°36.0'

18°24.0'

18°12.0'

18°0.0'

17°48.0'

17°36.0'

121°0.0'

121°12.0'

121°24.0'

121°0.0'

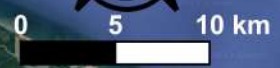
121°12.0'

121°24.0'

18°36.0'
18°24.0'
18°12.0'
18°0.0'
17°48.0'
17°36.0'

18°36.0'
18°24.0'
18°12.0'
18°0.0'
17°48.0'
17°36.0'

Hybrid Corn Version 2: 33 - 33 - 33



Calanasan

Luna

Santa Marcela

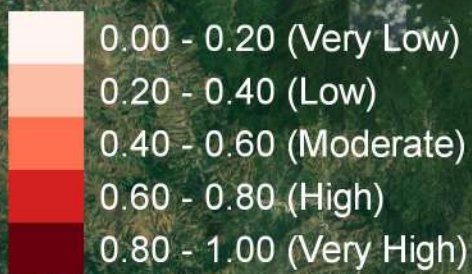
Pudtol

Flora

Kabugao

Conner

Climate Risk Vulnerability



Coordinate Reference System:
World Geodetic System 1984

121°0.0'

121°12.0'

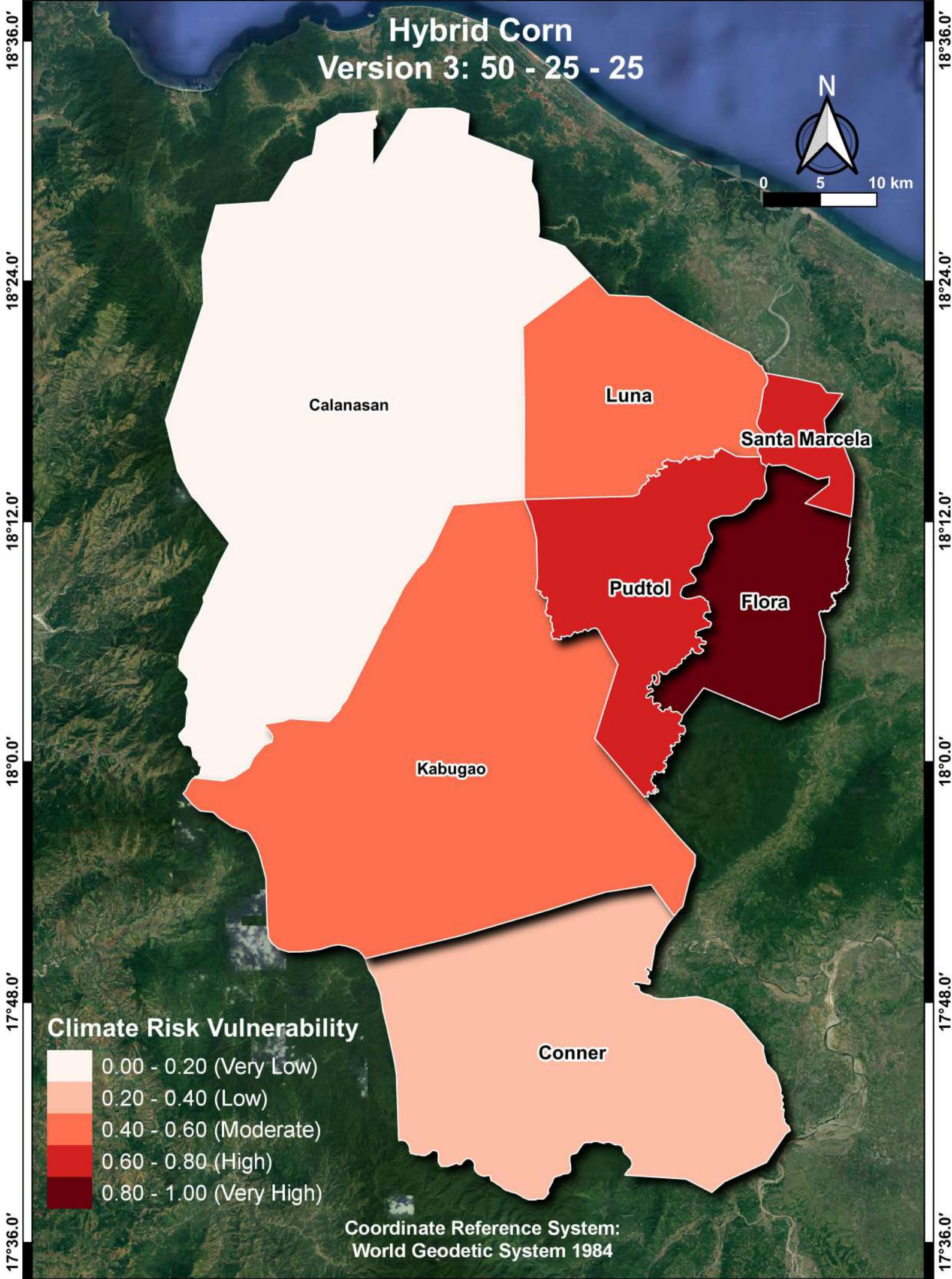
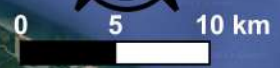
121°24.0'

121°0.0'

121°12.0'

121°24.0'

Hybrid Corn Version 3: 50 - 25 - 25



Calanasan

Luna

Santa Marcela

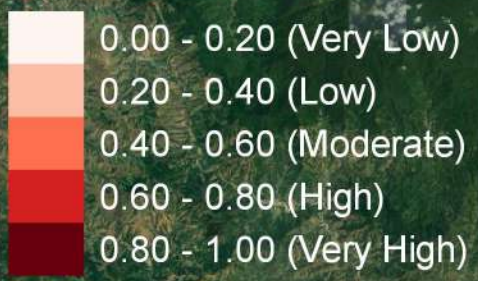
Pudtol

Flora

Kabugao

Conner

Climate Risk Vulnerability



Coordinate Reference System:
World Geodetic System 1984

18°36.0'
18°24.0'
18°12.0'
18°0.0'
17°48.0'
17°36.0'

18°36.0'
18°24.0'
18°12.0'
18°0.0'
17°48.0'
17°36.0'

121°0.0'

121°12.0'

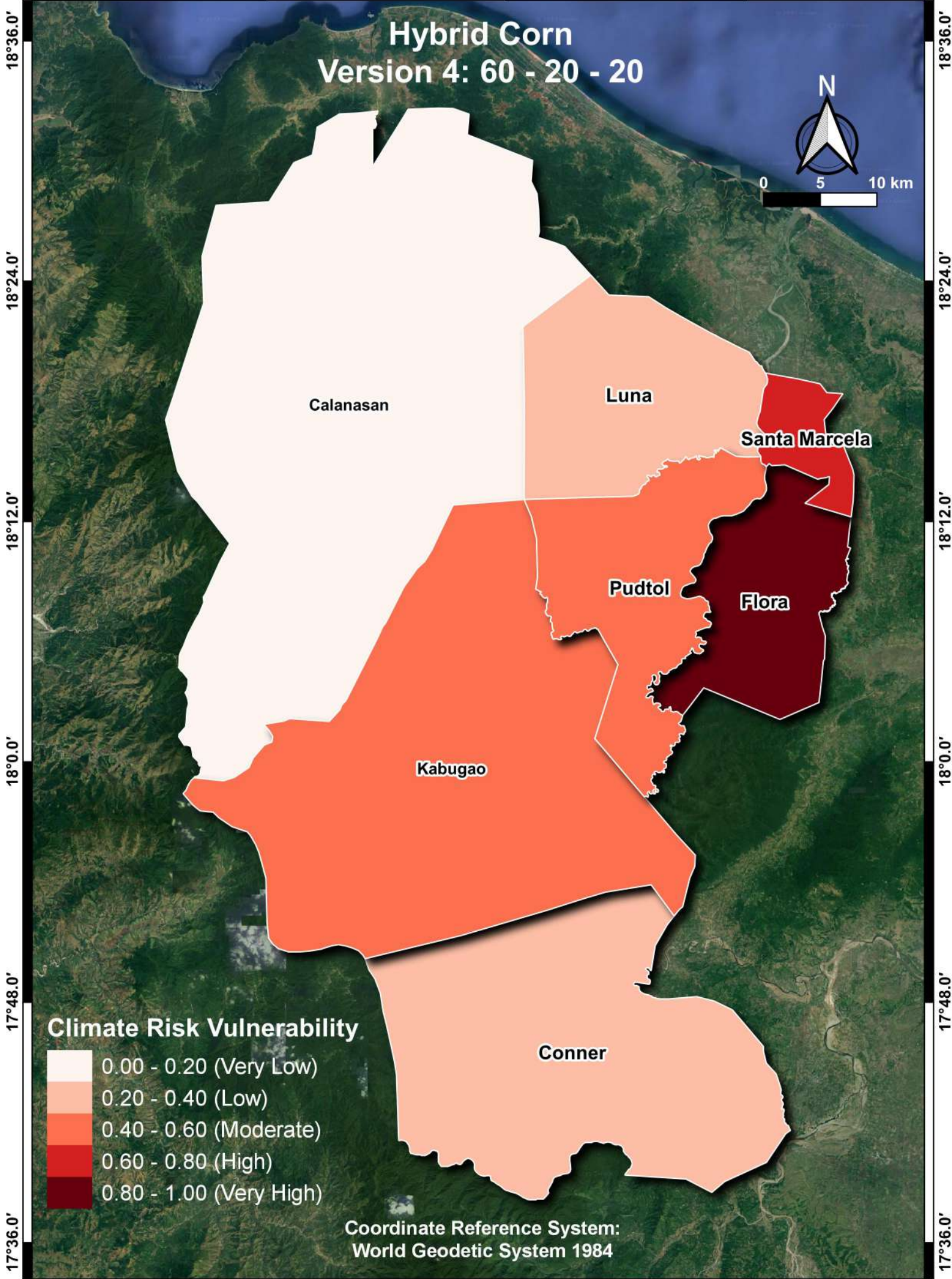
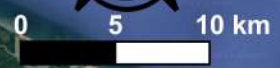
121°24.0'

121°0.0'

121°12.0'

121°24.0'

Hybrid Corn Version 4: 60 - 20 - 20



Calanasan

Luna

Santa Marcela

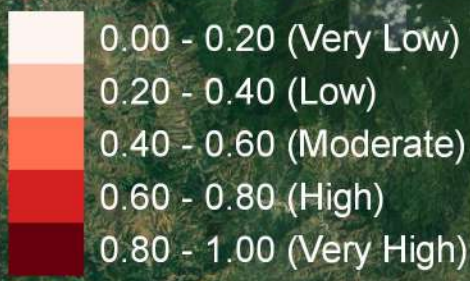
Pudtol

Flora

Kabugao

Conner

Climate Risk Vulnerability



Coordinate Reference System:
World Geodetic System 1984

18°36.0'

18°24.0'

18°12.0'

18°0.0'

17°48.0'

17°36.0'

18°36.0'

18°24.0'

18°12.0'

18°0.0'

17°48.0'

17°36.0'

121°0.0'

121°12.0'

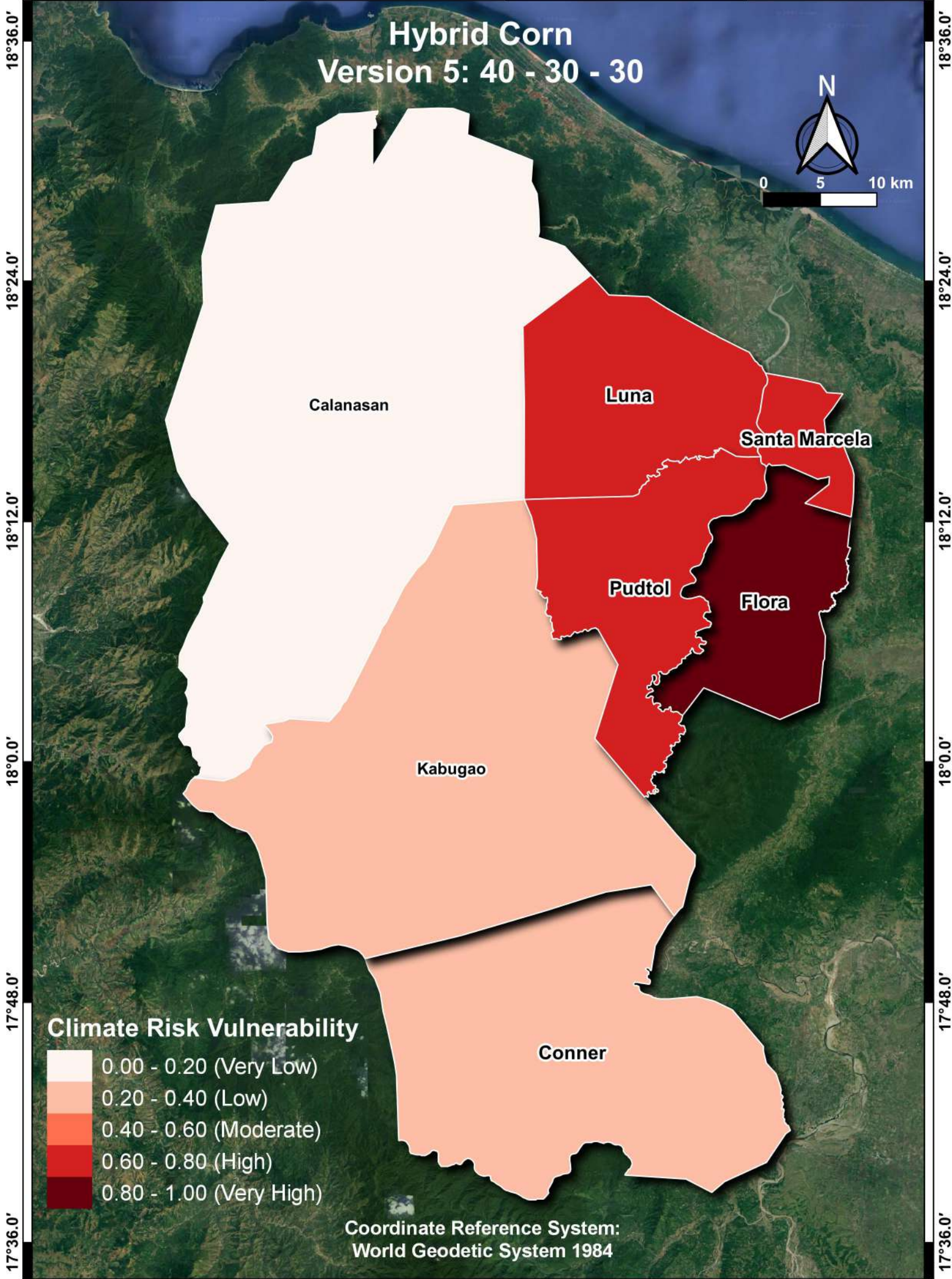
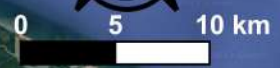
121°24.0'

121°0.0'

121°12.0'

121°24.0'

Hybrid Corn Version 5: 40 - 30 - 30



Calanasan

Luna

Santa Marcela

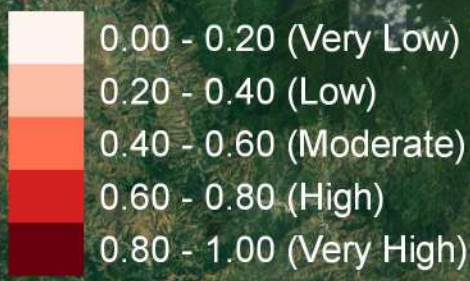
Pudtol

Flora

Kabugao

Conner

Climate Risk Vulnerability



Coordinate Reference System:
World Geodetic System 1984

18°36.0'

18°24.0'

18°12.0'

18°0.0'

17°48.0'

17°36.0'

18°36.0'

18°24.0'

18°12.0'

18°0.0'

17°48.0'

17°36.0'

121°0.0'

121°12.0'

121°24.0'

121°0.0'

121°12.0'

121°24.0'

Conventional Rice Version 5: 40 - 30 - 30



18°36.0'

18°36.0'

18°24.0'

18°24.0'

18°12.0'

18°12.0'

18°0.0'

18°0.0'

17°48.0'

17°48.0'

17°36.0'

17°36.0'

Calanasan

Luna

Santa Marcela

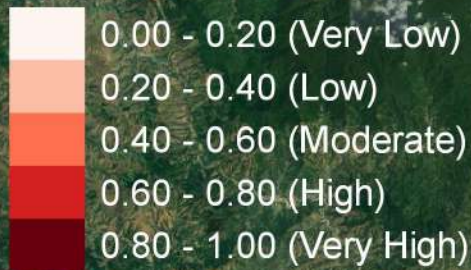
Pudtol

Flora

Kabugao

Conner

Climate Risk Vulnerability



Coordinate Reference System:
World Geodetic System 1984

121°0.0'

121°12.0'

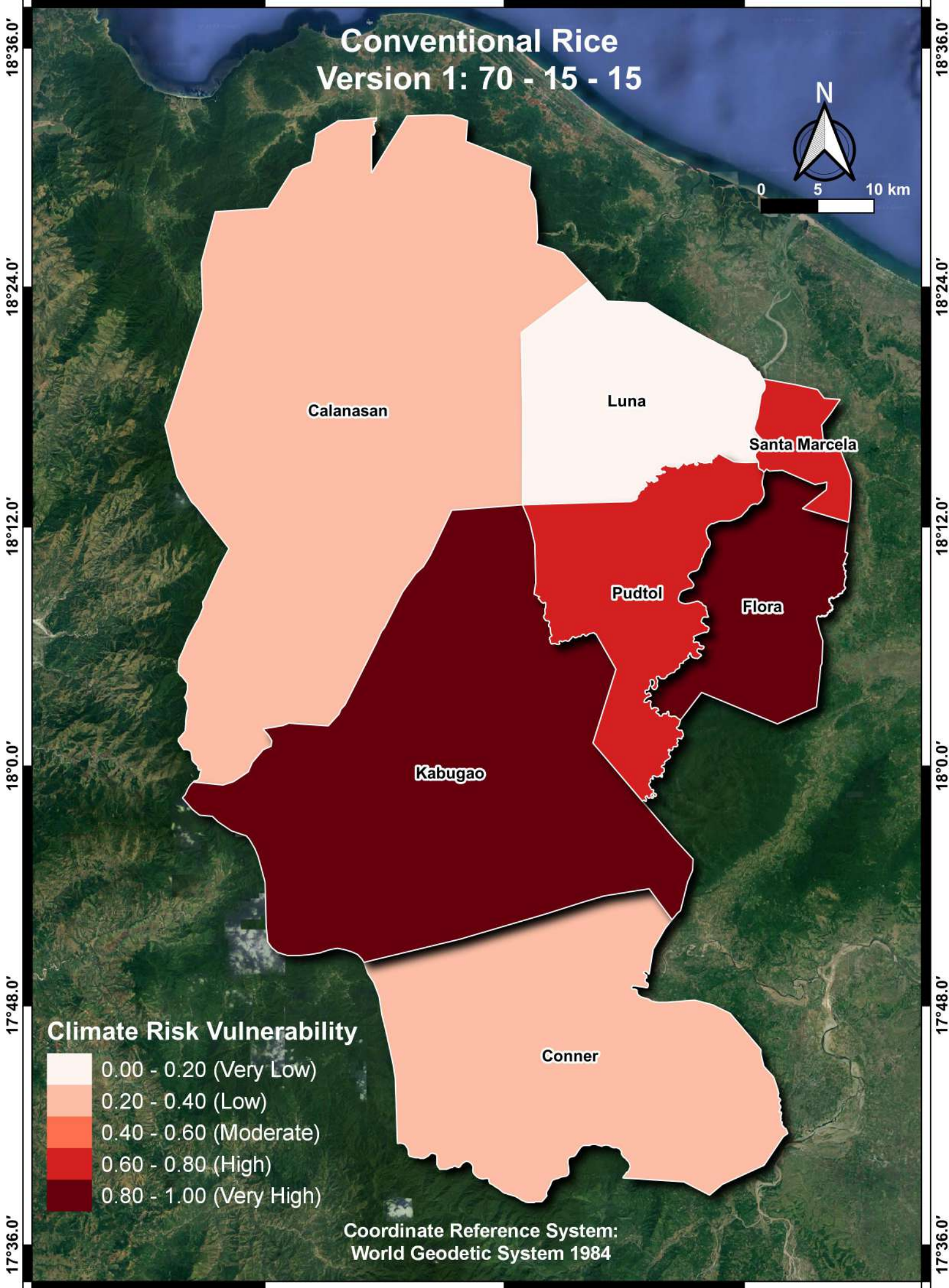
121°24.0'

121°0.0'

121°12.0'

121°24.0'

Conventional Rice Version 1: 70 - 15 - 15



Calanasan

Luna

Santa Marcela

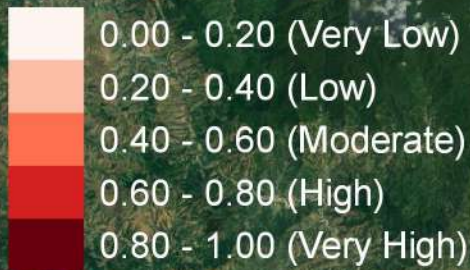
Pudtol

Flora

Kabugao

Conner

Climate Risk Vulnerability



Coordinate Reference System:
World Geodetic System 1984

18°36.0'

18°24.0'

18°12.0'

18°0.0'

17°48.0'

17°36.0'

18°36.0'

18°24.0'

18°12.0'

18°0.0'

17°48.0'

17°36.0'

121°0.0'

121°12.0'

121°24.0'

121°0.0'

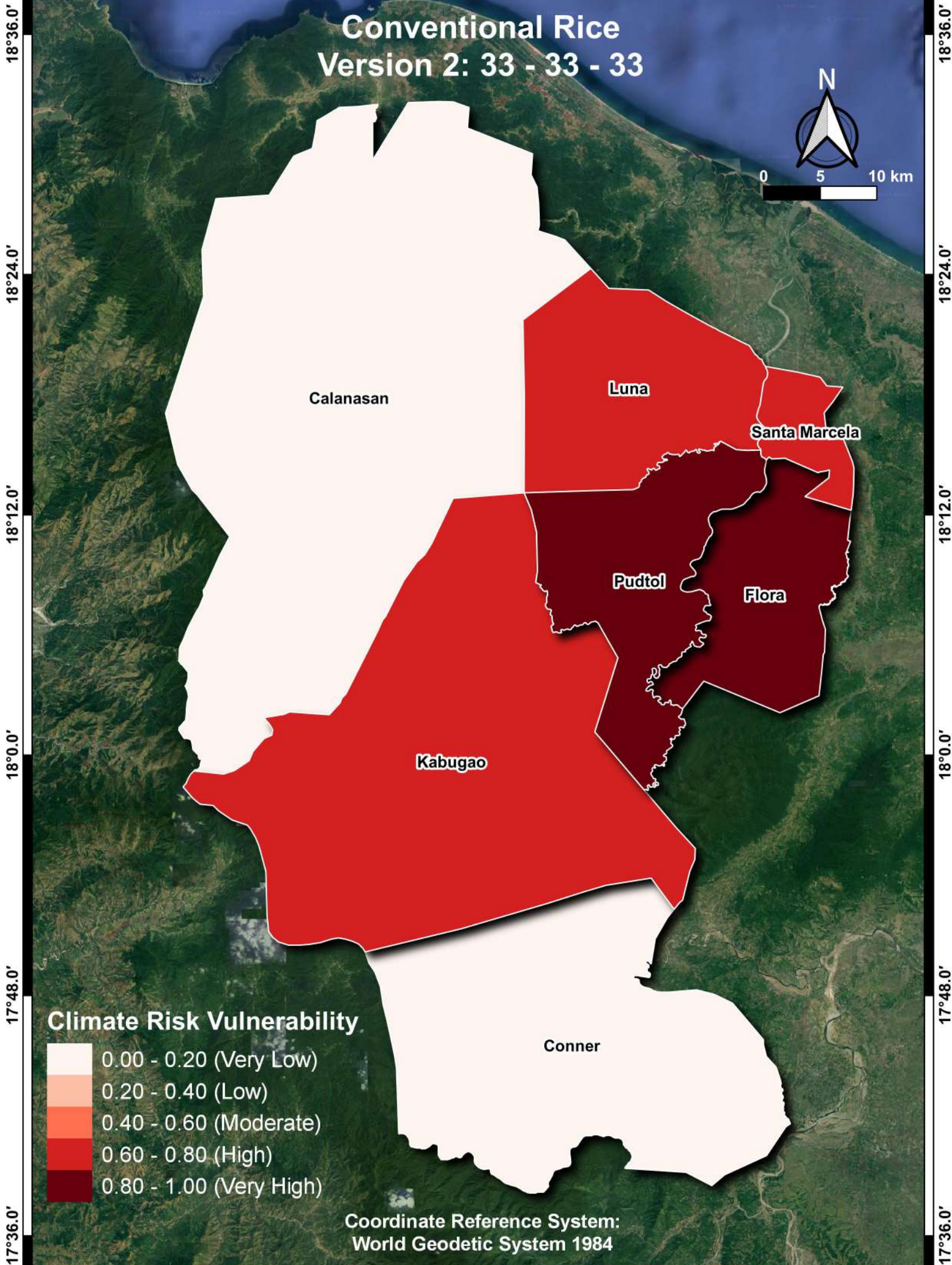
121°12.0'

121°24.0'

Conventional Rice Version 2: 33 - 33 - 33



0 5 10 km



18°36.0'
18°24.0'
18°12.0'
18°0.0'
17°48.0'
17°36.0'

18°36.0'
18°24.0'
18°12.0'
18°0.0'
17°48.0'
17°36.0'

Calanasan

Luna

Santa Marcela

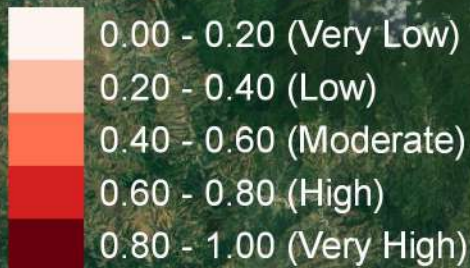
Pudtol

Flora

Kabugao

Conner

Climate Risk Vulnerability



Coordinate Reference System:
World Geodetic System 1984

121°0.0'

121°12.0'

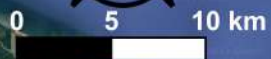
121°24.0'

121°0.0'

121°12.0'

121°24.0'

Conventional Rice Version 3: 50 - 25 - 25



18°36.0'

18°36.0'

18°24.0'

18°24.0'

18°12.0'

18°12.0'

18°0.0'

18°0.0'

17°48.0'

17°48.0'

17°36.0'

17°36.0'

Calanasan

Luna

Santa Marcela

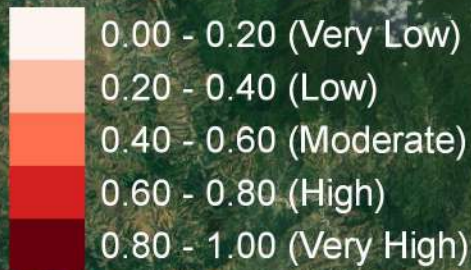
Pudtol

Flora

Kabugao

Conner

Climate Risk Vulnerability



Coordinate Reference System:
World Geodetic System 1984

121°0.0'

121°12.0'

121°24.0'

121°0.0'

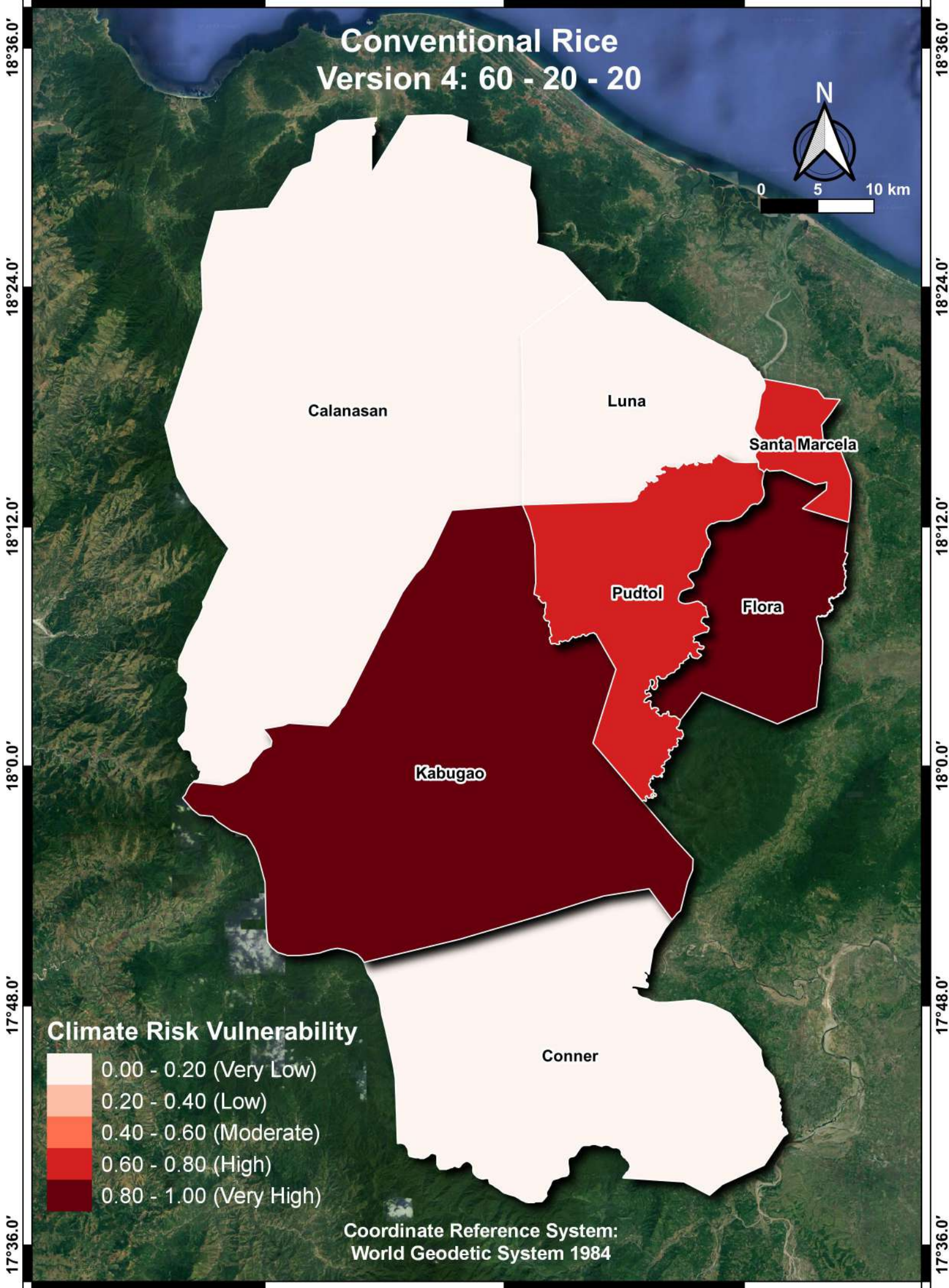
121°12.0'

121°24.0'

Conventional Rice Version 4: 60 - 20 - 20



0 5 10 km



18°36.0'

18°24.0'

18°12.0'

18°0.0'

17°48.0'

17°36.0'

18°36.0'

18°24.0'

18°12.0'

18°0.0'

17°48.0'

17°36.0'

Calanasan

Luna

Santa Marcela

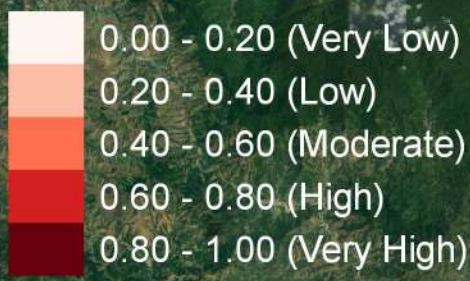
Pudtol

Flora

Kabugao

Conner

Climate Risk Vulnerability



Coordinate Reference System:
World Geodetic System 1984

121°0.0'

121°12.0'

121°24.0'

121°0.0'

121°12.0'

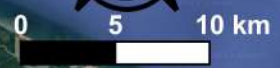
121°24.0'

18°36.0'
18°24.0'
18°12.0'
18°0.0'
17°48.0'
17°36.0'

18°36.0'
18°24.0'
18°12.0'
18°0.0'
17°48.0'
17°36.0'

Banana

Version 1: 70 - 15 - 15



Calanasan

Luna

Santa Marcela

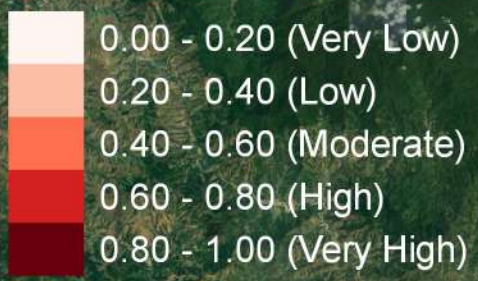
Pudtol

Flora

Kabugao

Conner

Climate Risk Vulnerability



Coordinate Reference System:
World Geodetic System 1984

121°0.0'

121°12.0'

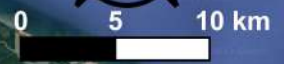
121°24.0'

18°36.0'
18°24.0'
18°12.0'
18°0.0'
17°48.0'
17°36.0'

18°36.0'
18°24.0'
18°12.0'
18°0.0'
17°48.0'
17°36.0'

Banana

Version 2: 33 - 33 - 33



Calanasan

Luna

Santa Marcela

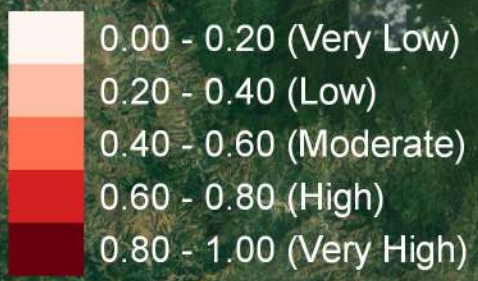
Pudtol

Flora

Kabugao

Conner

Climate Risk Vulnerability



Coordinate Reference System:
World Geodetic System 1984

121°0.0'

121°12.0'

121°24.0'

121°0.0'

121°12.0'

121°24.0'

18°36.0'

18°24.0'

18°12.0'

18°0.0'

17°48.0'

17°36.0'

18°36.0'

18°24.0'

18°12.0'

18°0.0'

17°48.0'

17°36.0'

Banana

Version 3: 50 - 25 - 25



Calanasan

Luna

Santa Marcela

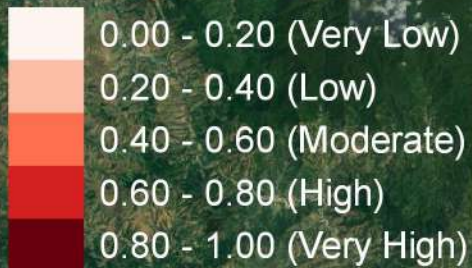
Pudtol

Flora

Kabugao

Conner

Climate Risk Vulnerability



Coordinate Reference System:
World Geodetic System 1984

121°0.0'

121°12.0'

121°24.0'

121°0.0'

121°12.0'

121°24.0'

18°36.0'

18°24.0'

18°12.0'

18°0.0'

17°48.0'

17°36.0'

18°36.0'

18°24.0'

18°12.0'

18°0.0'

17°48.0'

17°36.0'

Banana

Version 4: 60 - 20 - 20



Calanasan

Luna

Santa Marcela

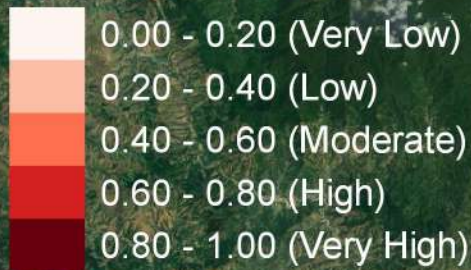
Pudtol

Flora

Kabugao

Conner

Climate Risk Vulnerability



Coordinate Reference System:
World Geodetic System 1984

121°0.0'

121°12.0'

121°24.0'

18°36.0'

18°36.0'

18°24.0'

18°24.0'

18°12.0'

18°12.0'

18°0.0'

18°0.0'

17°48.0'

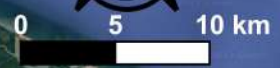
17°48.0'

17°36.0'

17°36.0'

Banana

Version 5: 40 - 30 - 30



Calanasan

Luna

Santa Marcela

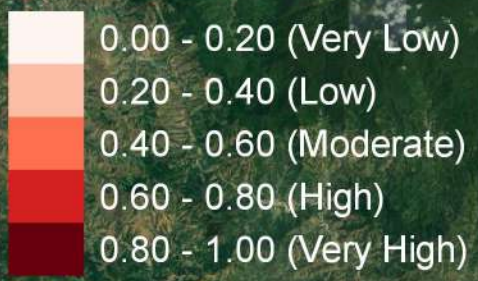
Pudtol

Flora

Kabugao

Conner

Climate Risk Vulnerability



Coordinate Reference System:
World Geodetic System 1984