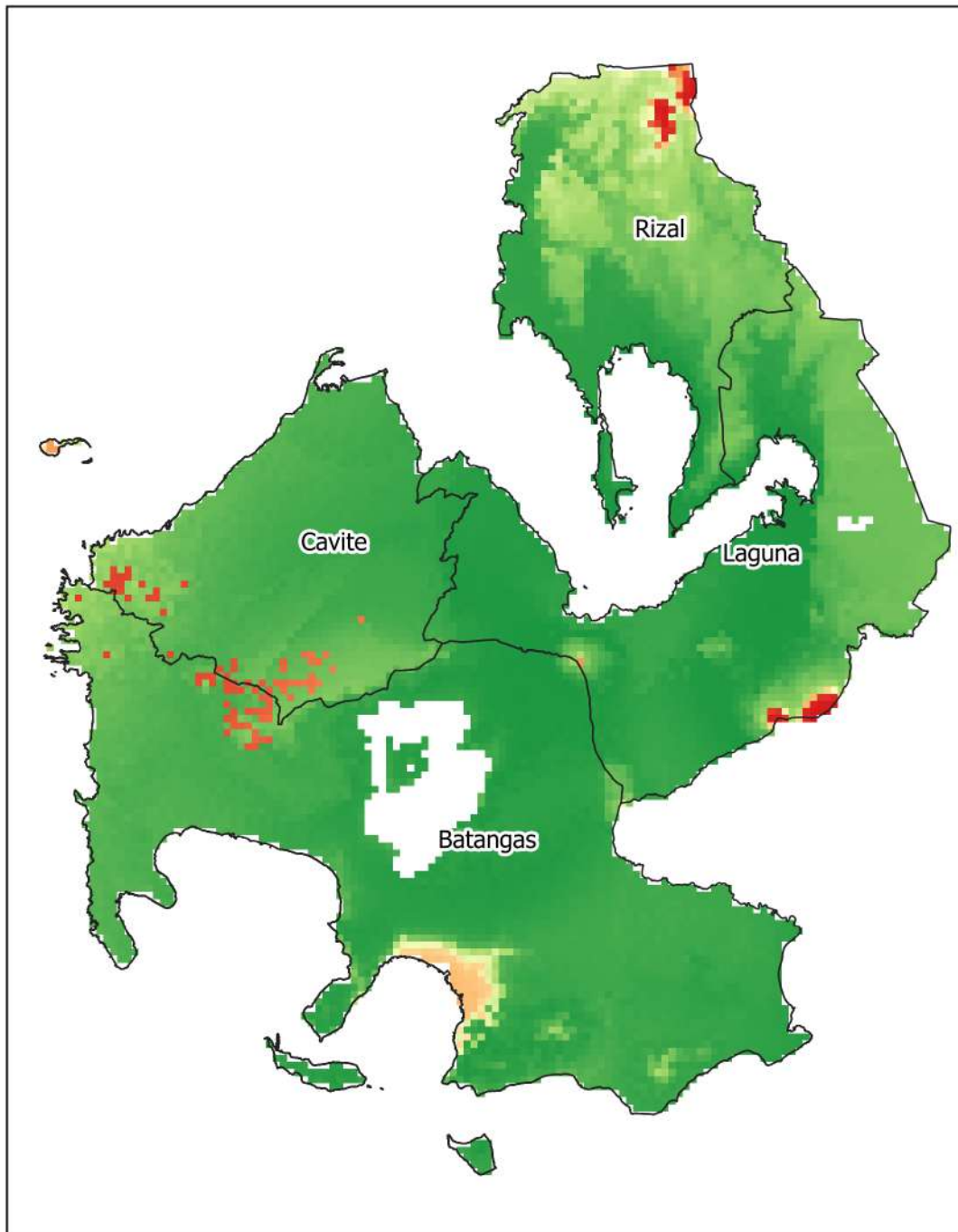
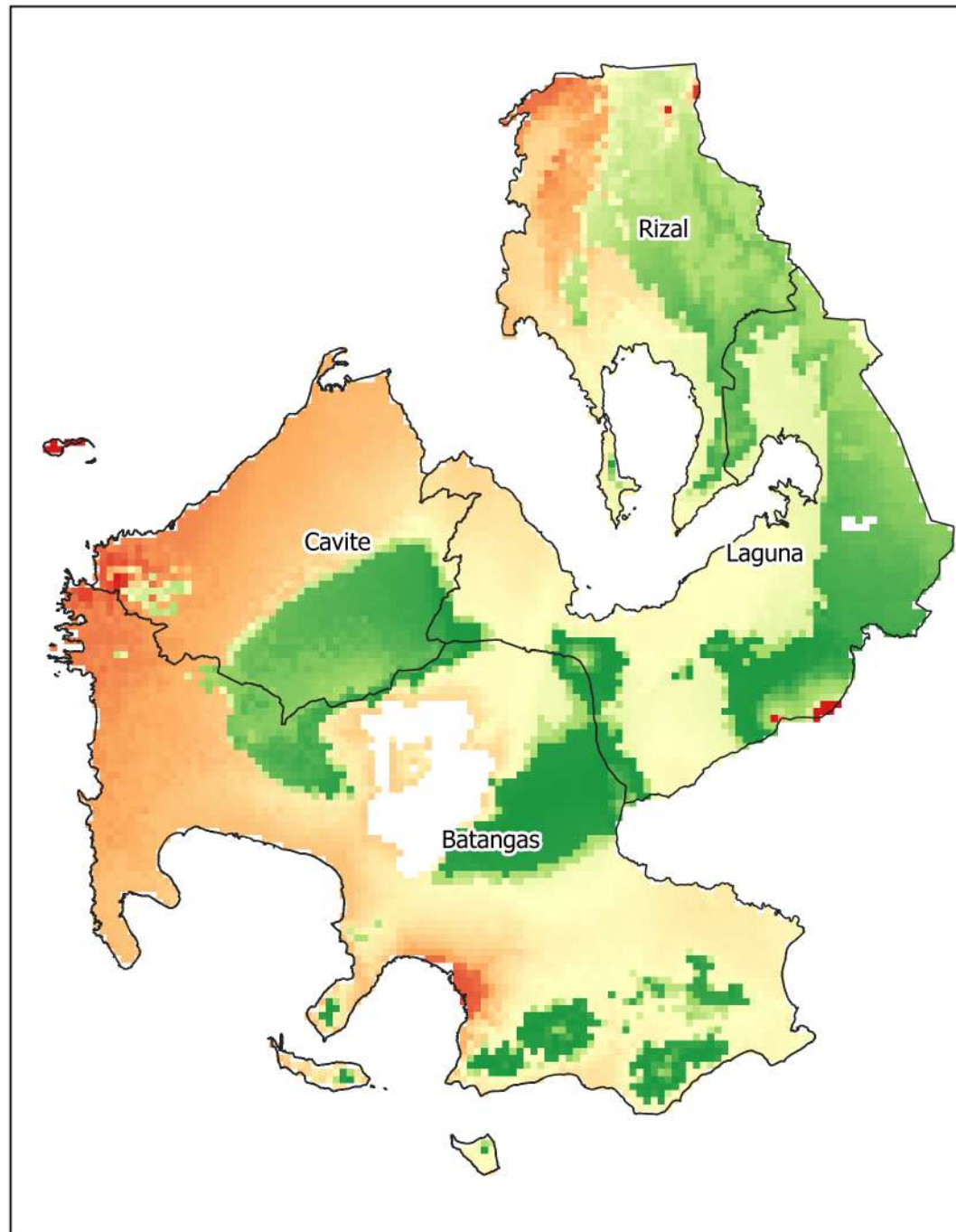


MAIZE CLIMATE SUITABILITY - BASELINE

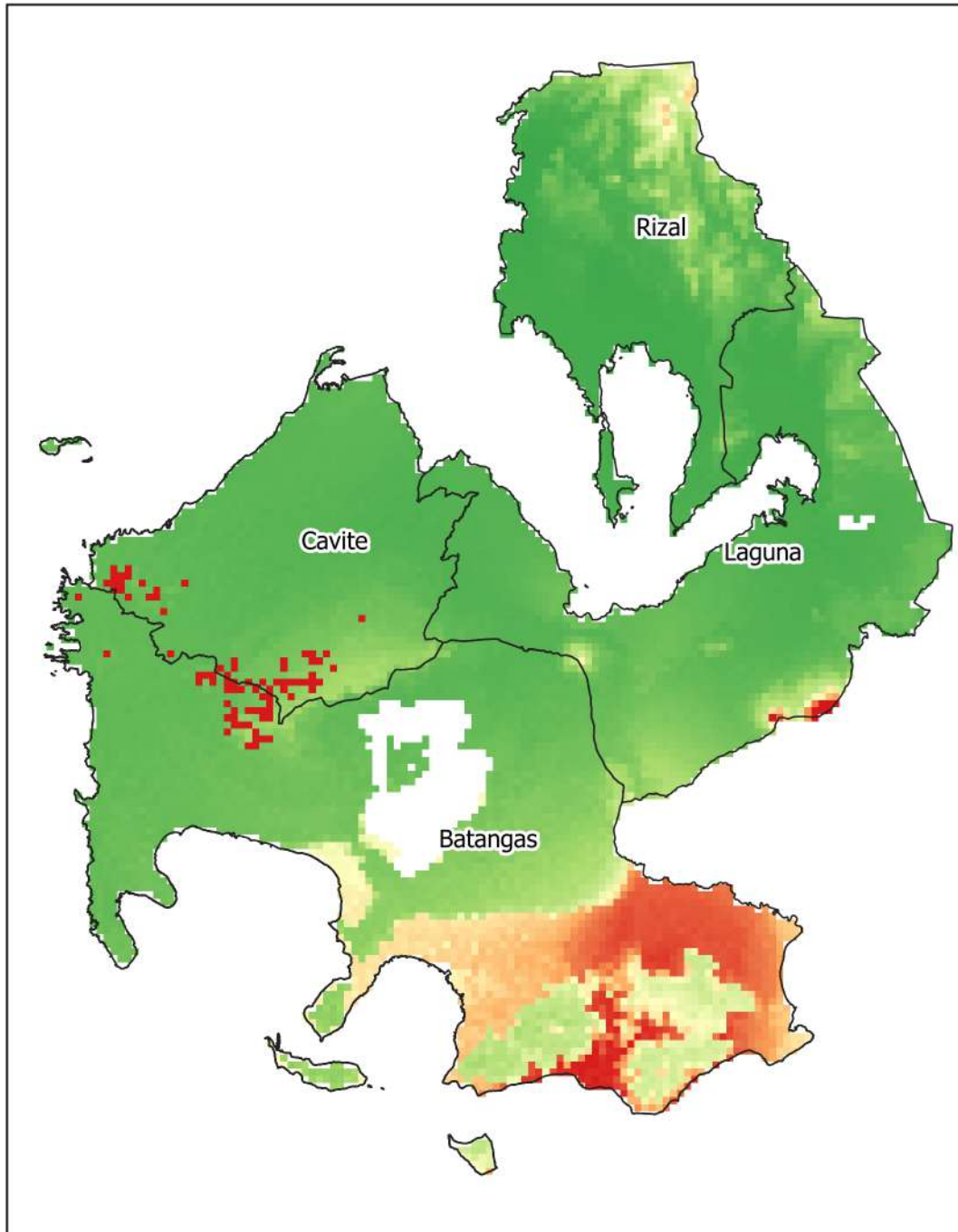


MAIZE CLIMATE SUITABILITY - YEAR 2050

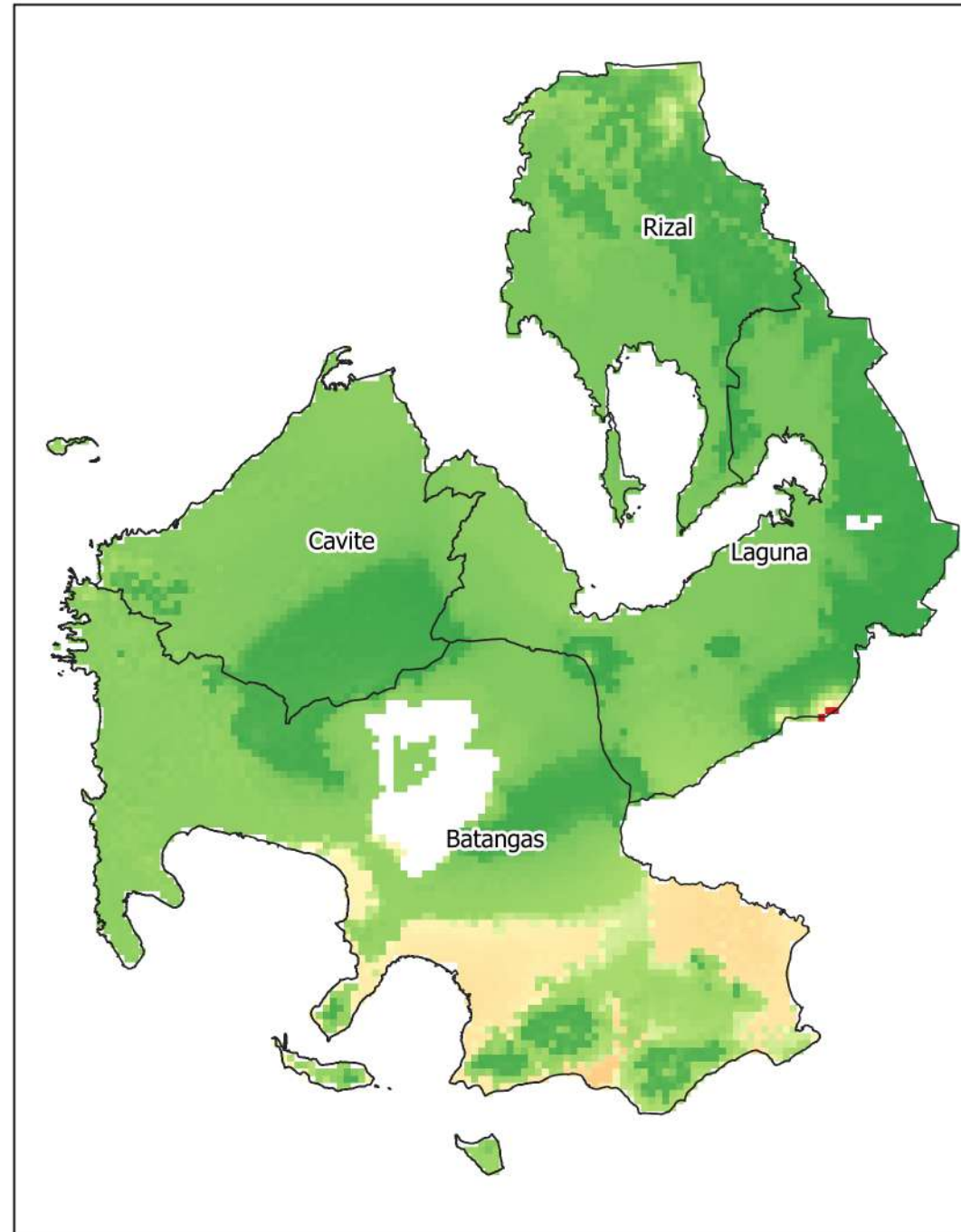


SUITABILITY RATING: ■ 20 % ■ 40 % ■ 60 % ■ 80 % ■ 100 %

RICE CLIMATE SUITABILITY - BASELINE

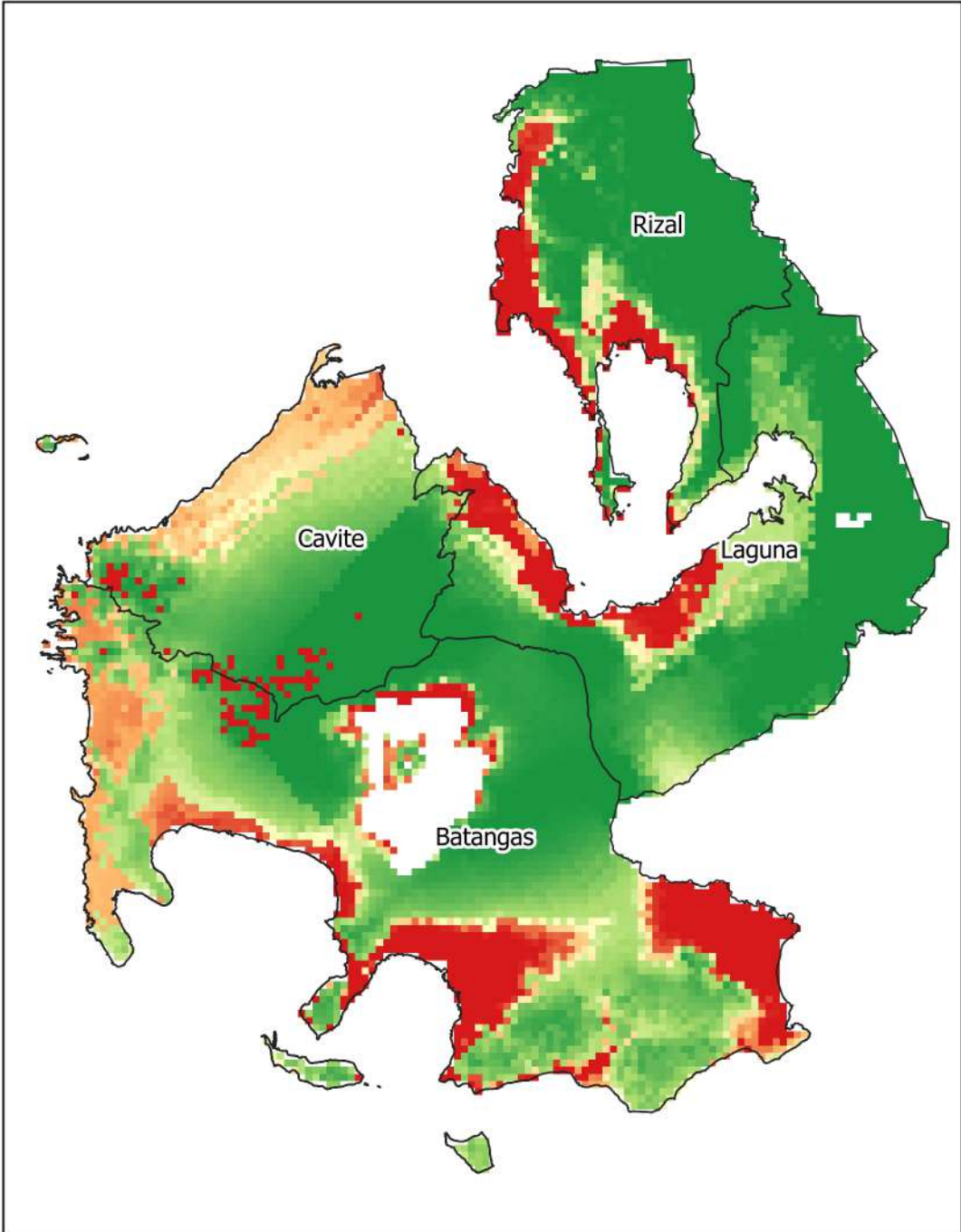


RICE CLIMATE SUITABILITY - YEAR 2050

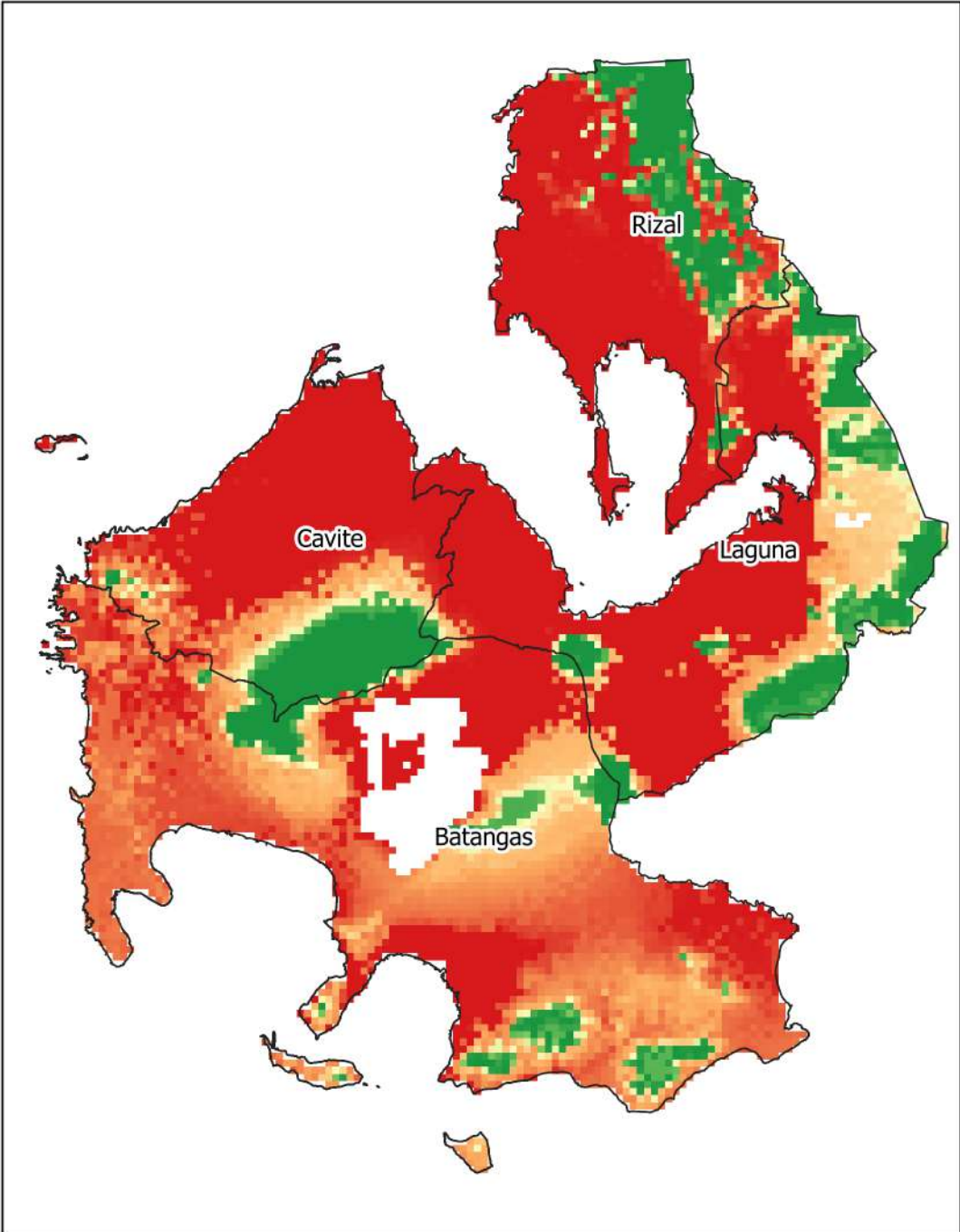


SUITABILITY RATING: ■ 20 % ■ 40 % ■ 60 % ■ 80 % ■ 100 %

COFFEE CLIMATE SUITABILITY - BASELINE



COFFEE CLIMATE SUITABILITY - YEAR 2050



SUITABILITY RATING: ■ 20 % ■ 40 % ■ 60 % ■ 80 % ■ 100 %