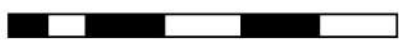


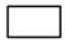





N

10 0 10 20 30 40 m

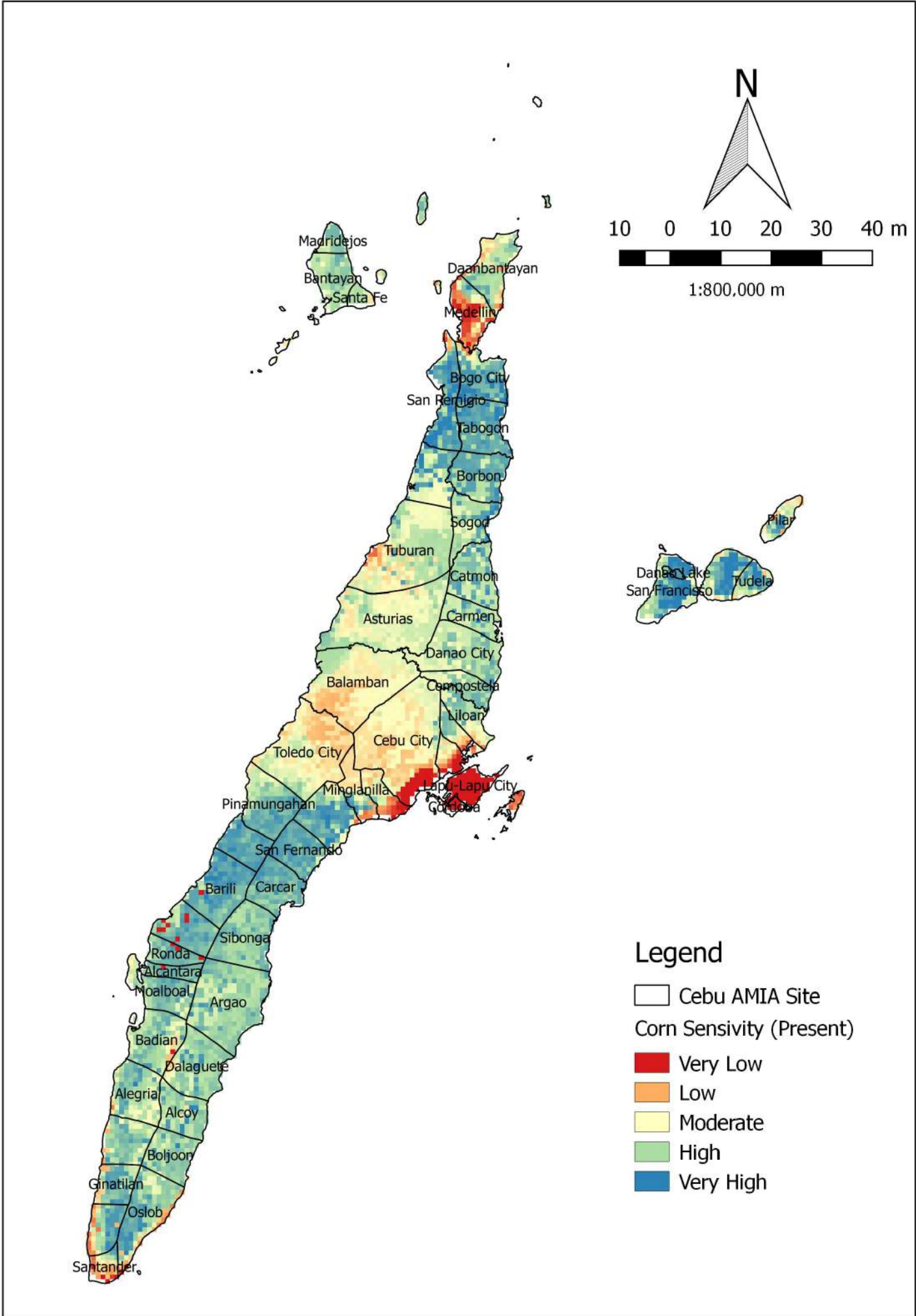


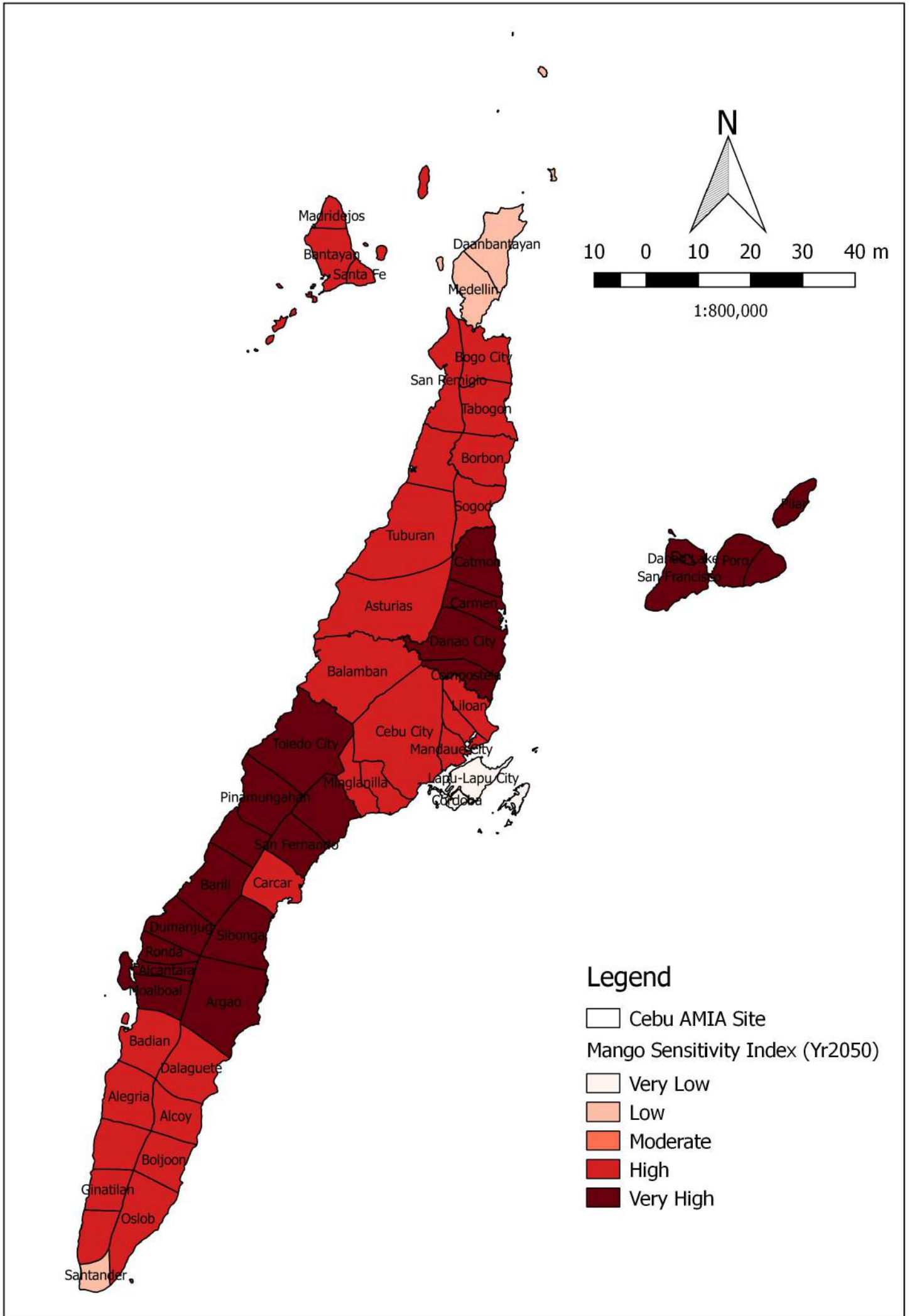
1:800,000 m

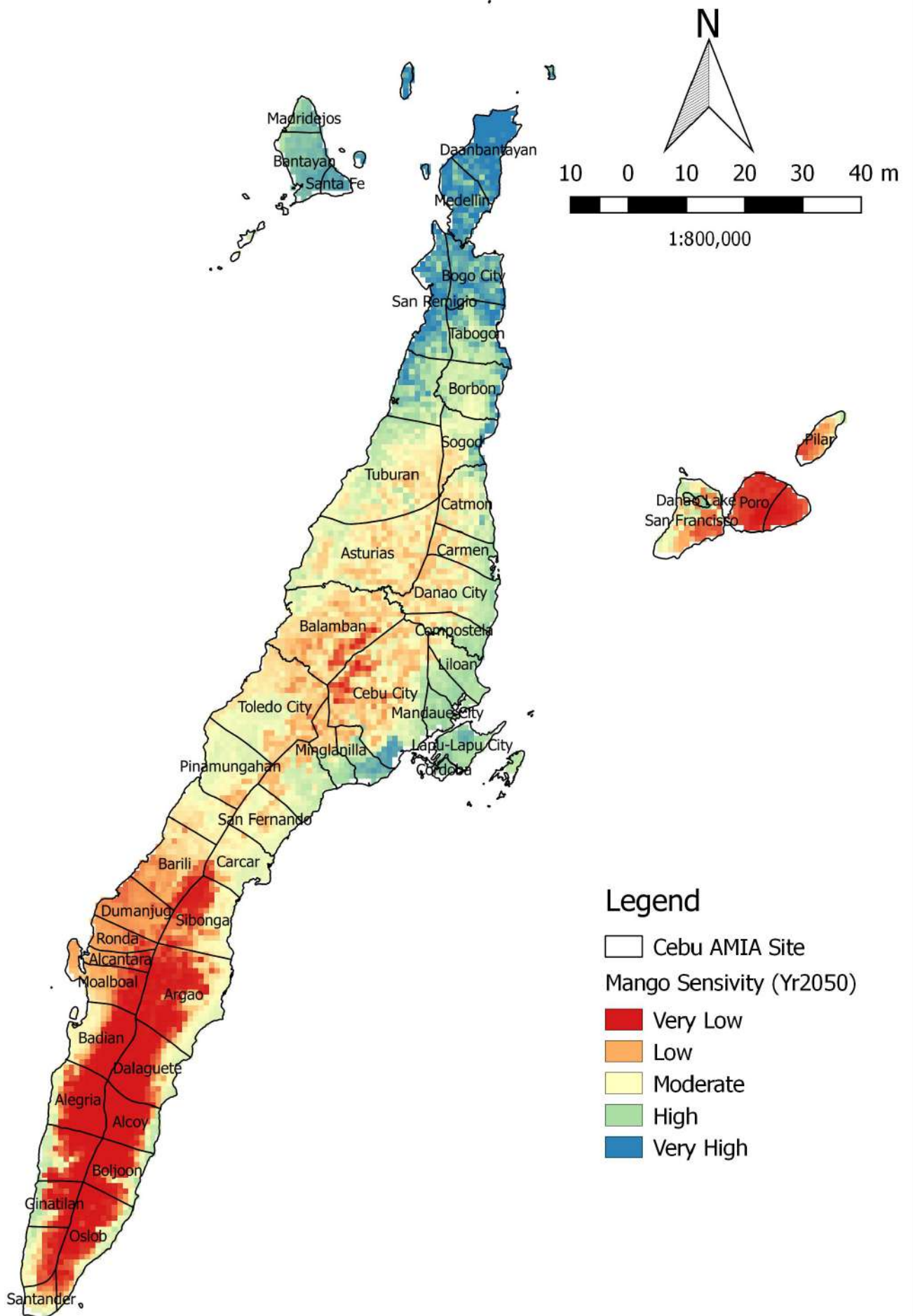
**Legend**

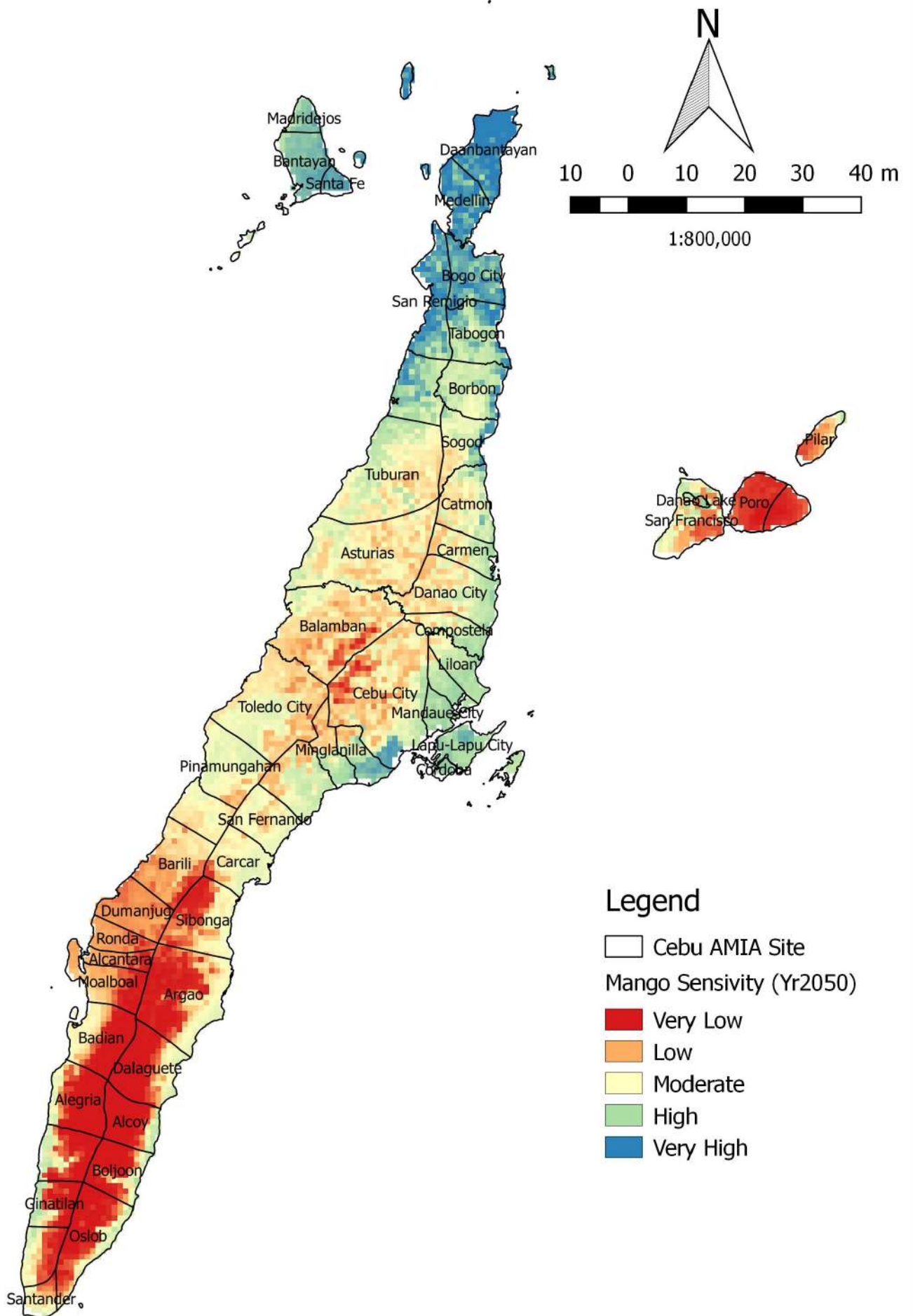
-  Cebu AMIA Site
- Corn Sensivity (Present)
-  Very Low
-  Low
-  Moderate
-  High
-  Very High



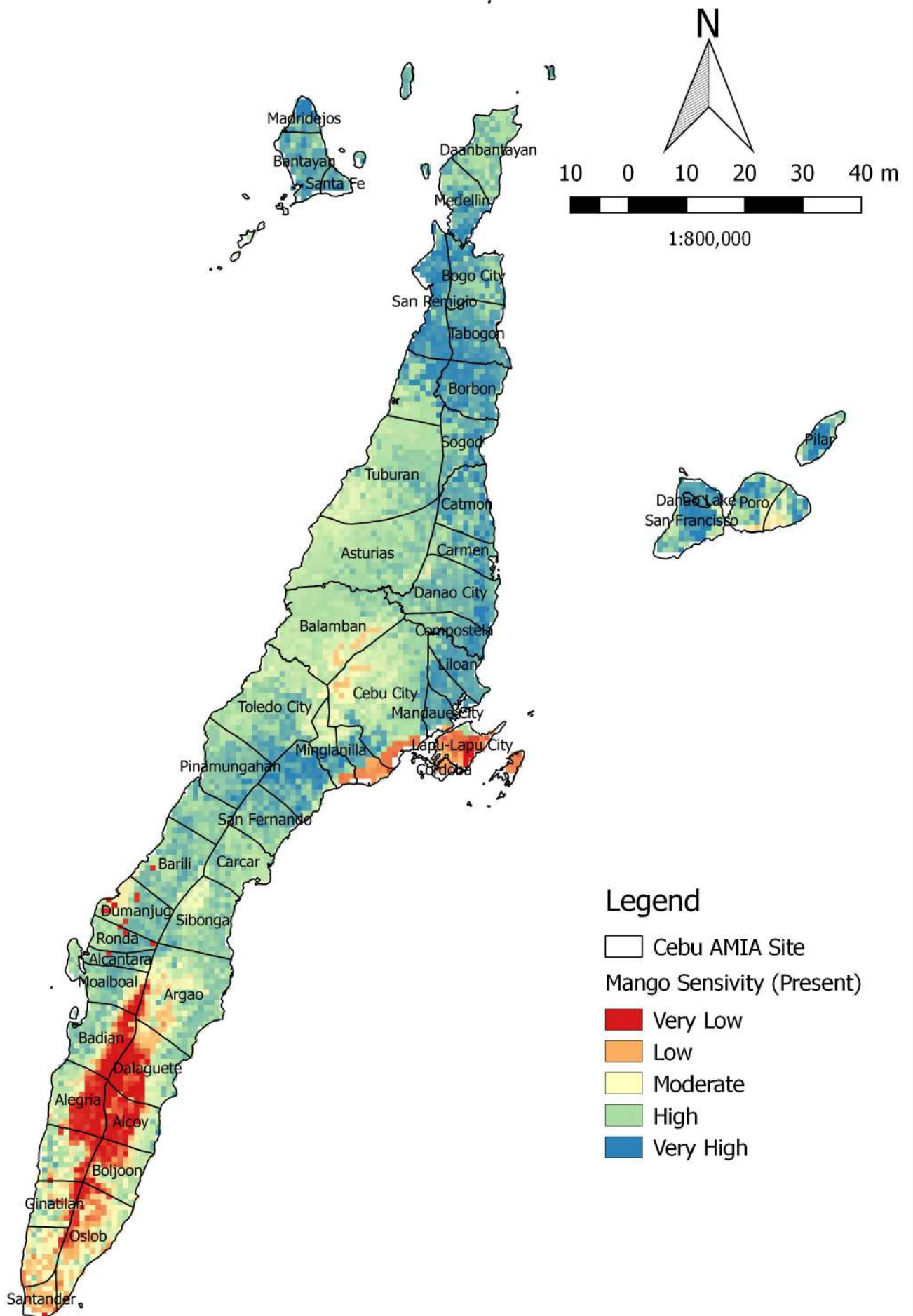


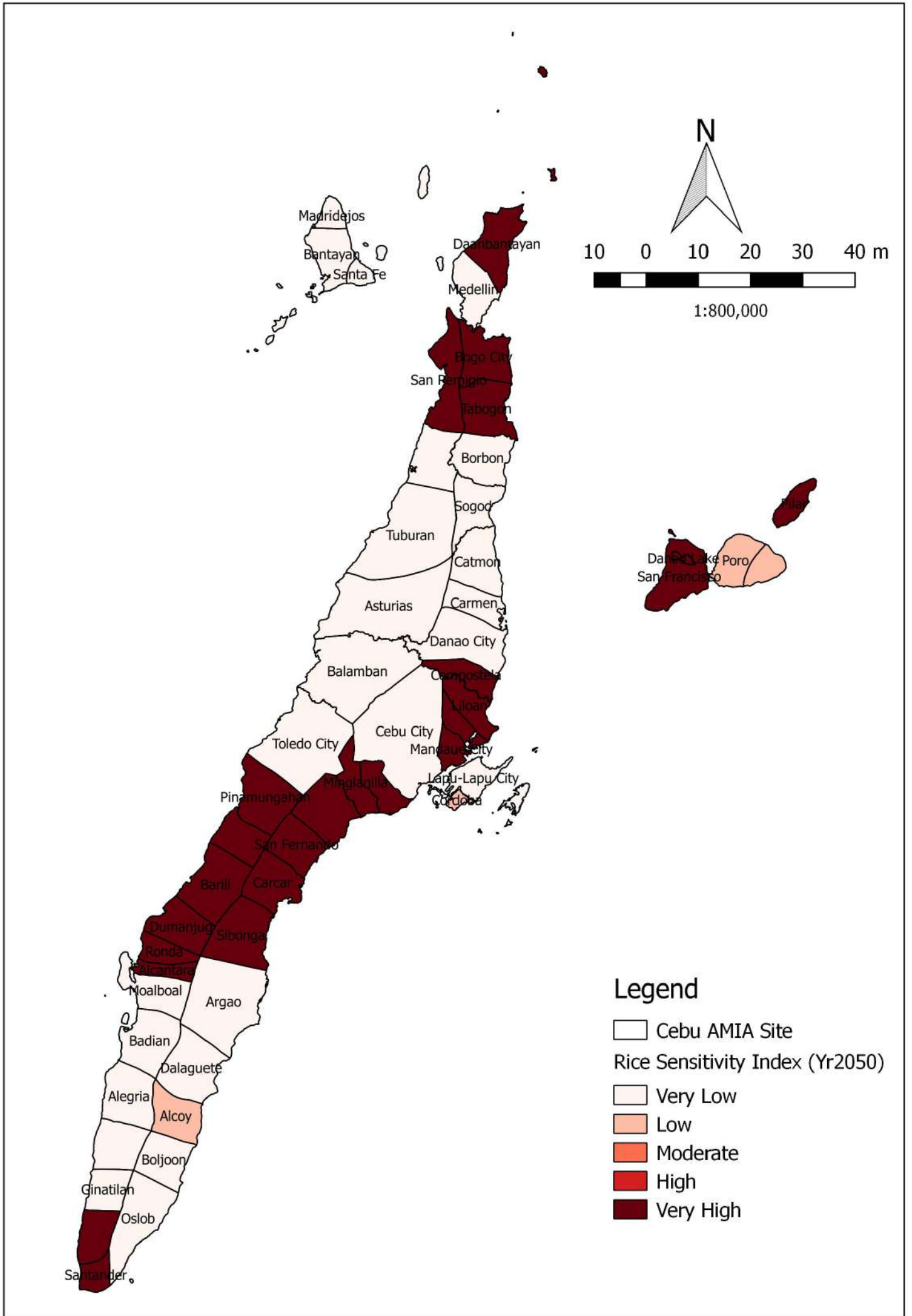


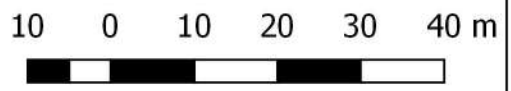
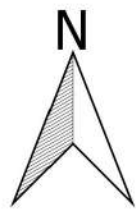
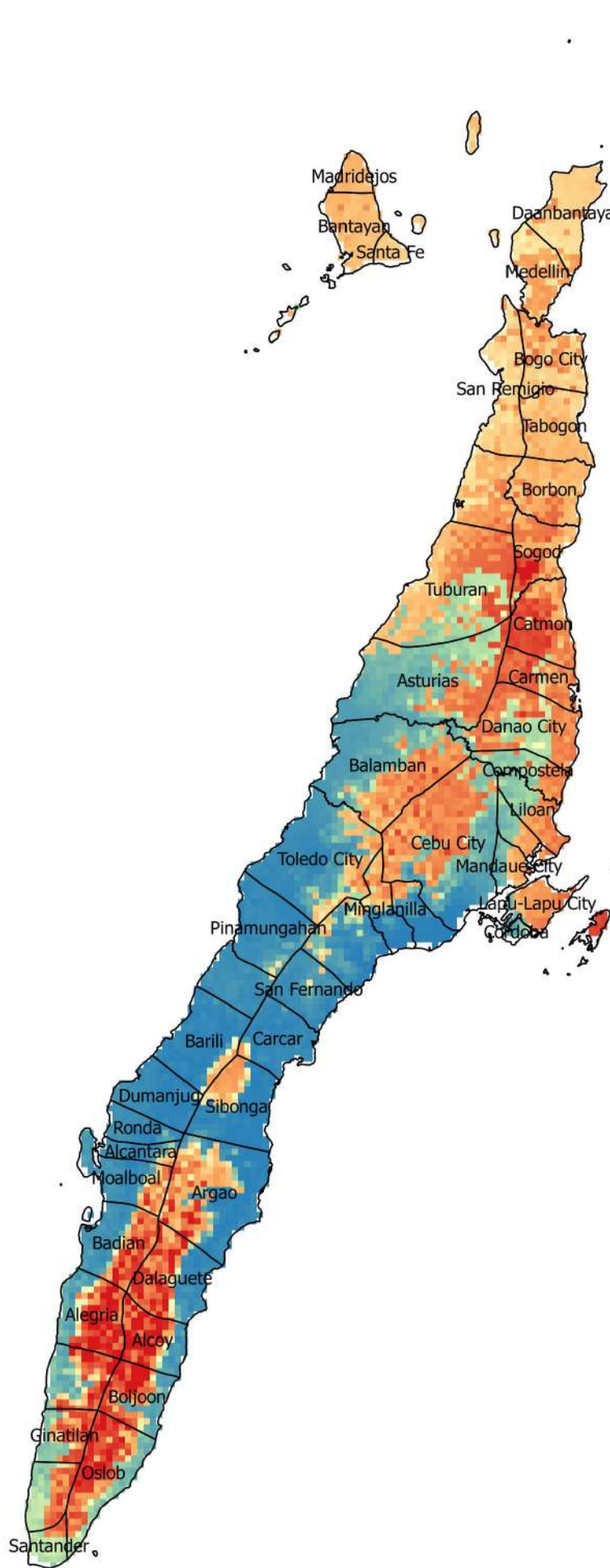




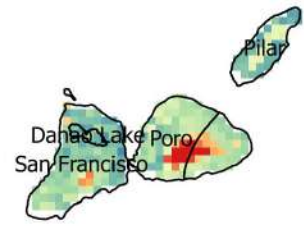







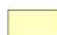
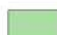



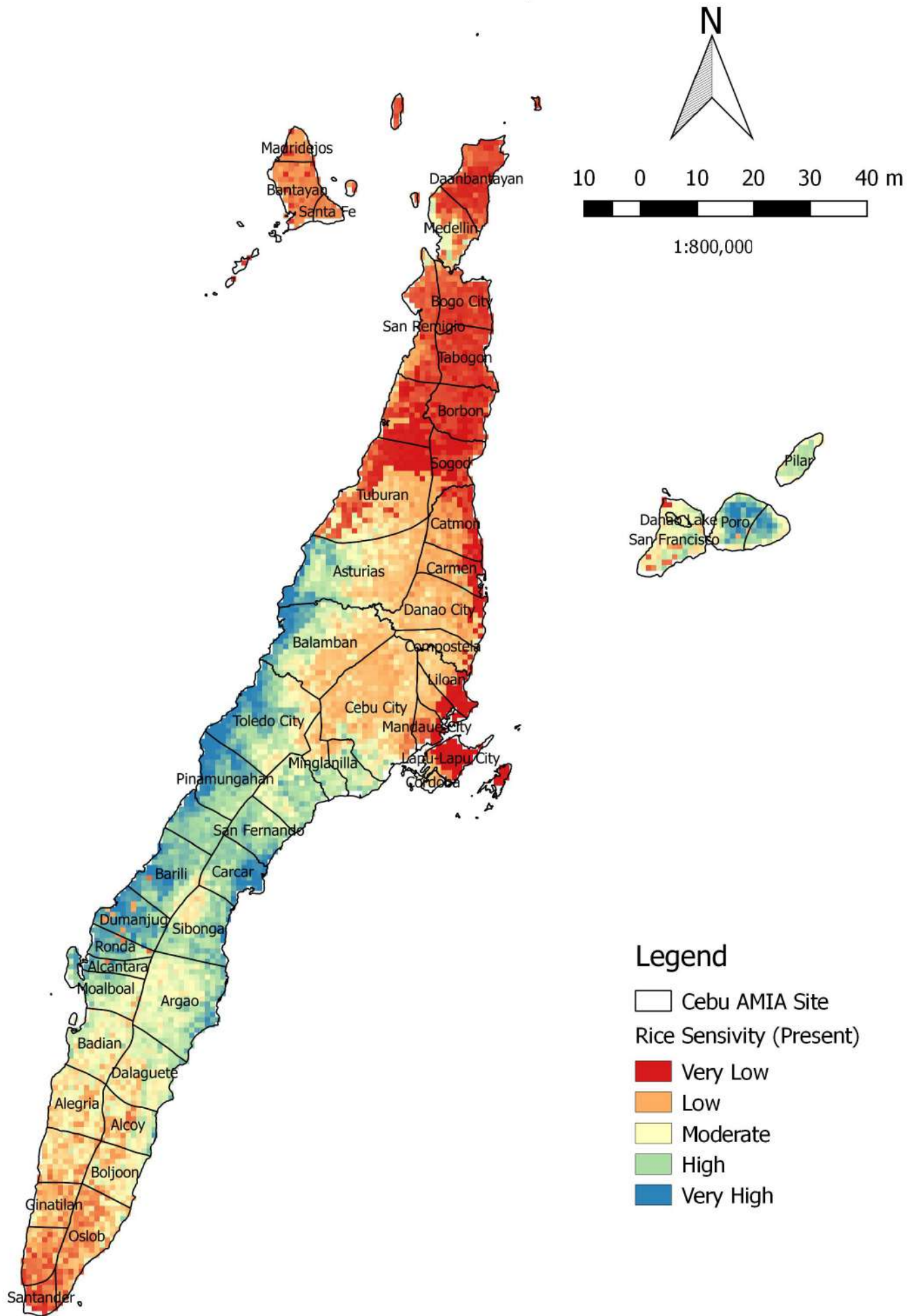


1:800,000



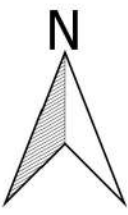
### Legend

-  Cebu AMIA Site
- Rice Sensivity (Yr2050)
-  Very Low
-  Low
-  Moderate
-  High
-  Very High



Magridgejos  
 Bantayan  
 Santa Fe  
 Daanbantayan  
 Medellin  
 Bogo City  
 San Remigio  
 Tabogon  
 Borbon  
 Sogod  
 Tuburan  
 Catmon  
 Asturias  
 Carmen  
 Danao City  
 Balamban  
 Compostela  
 Liloan  
 Toledo City  
 Cebu City  
 Mandaue City  
 Lapu-Lapu City  
 Cordoba  
 Pinamungahan  
 Minglanilla  
 San Fernando  
 Barili  
 Carcar  
 Dumanjug  
 Sibonga  
 Ronda  
 Alcantara  
 Moalboal  
 Argao  
 Badian  
 Dalaguete  
 Alegria  
 Alcoy  
 Boljoon  
 Ginatilan  
 Oslob  
 Santander

Pilar  
 Danao  
 Lake Poro  
 San Francisco



10 0 10 20 30 40 m  
 1:800,000



