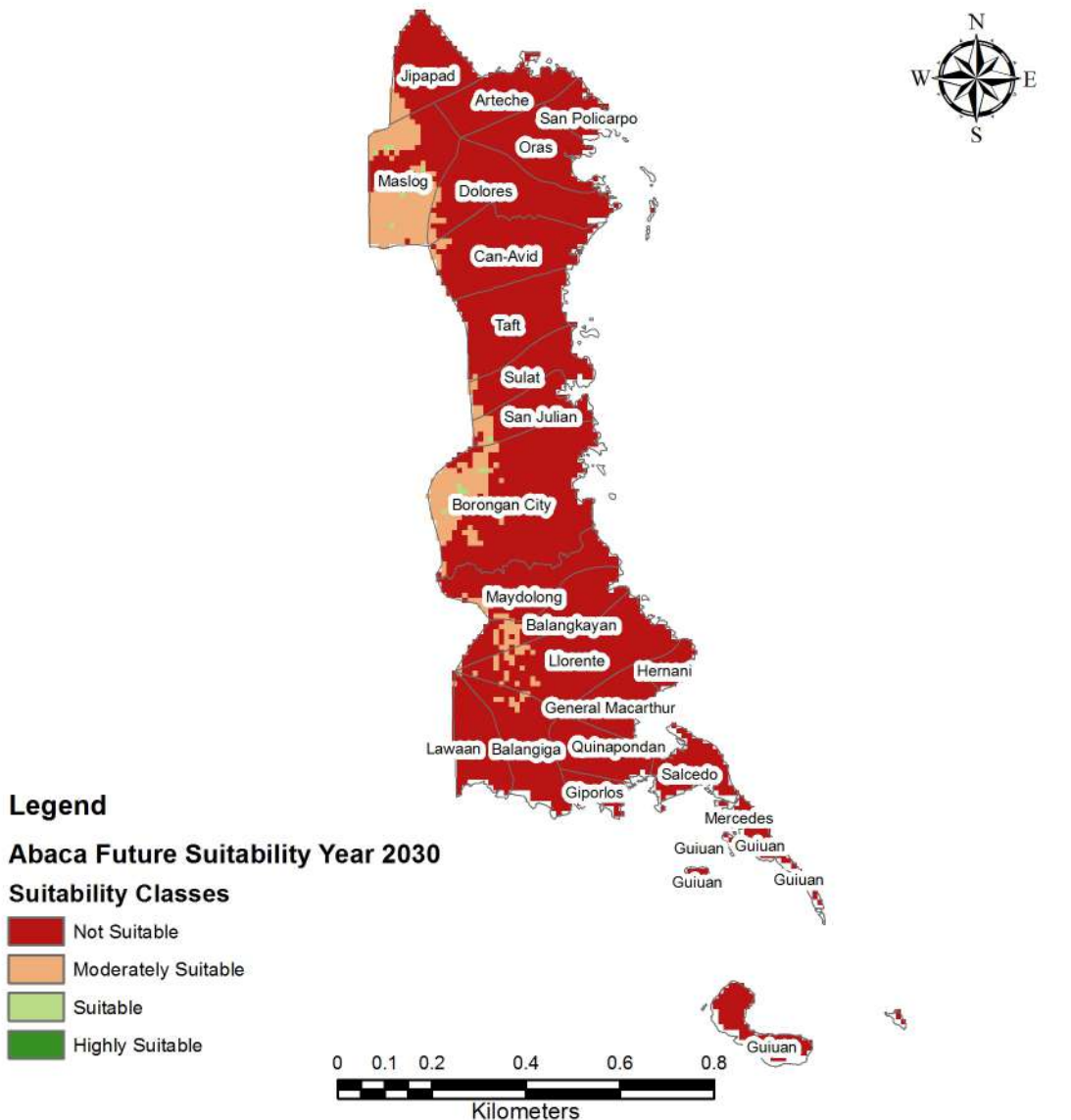
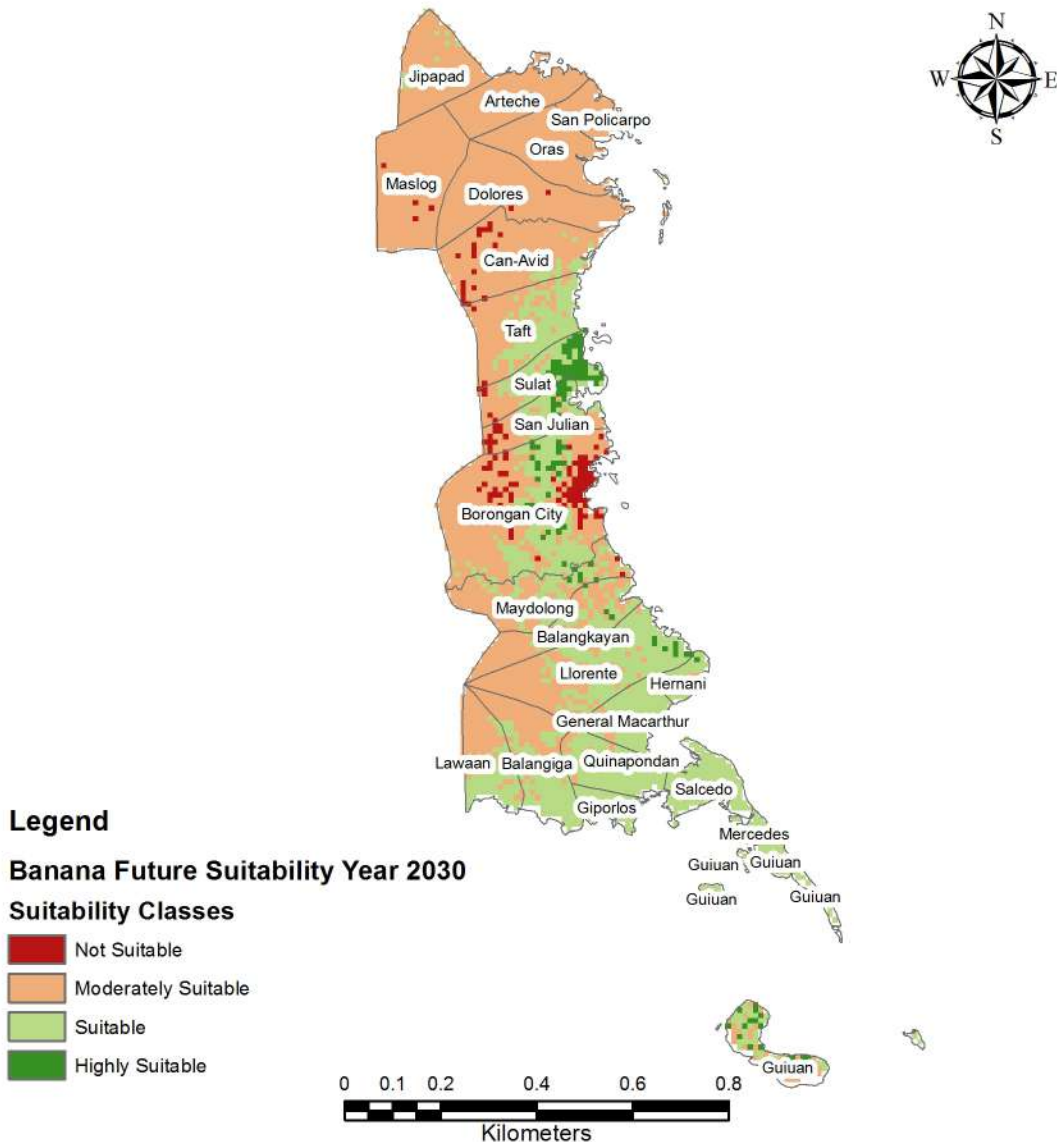


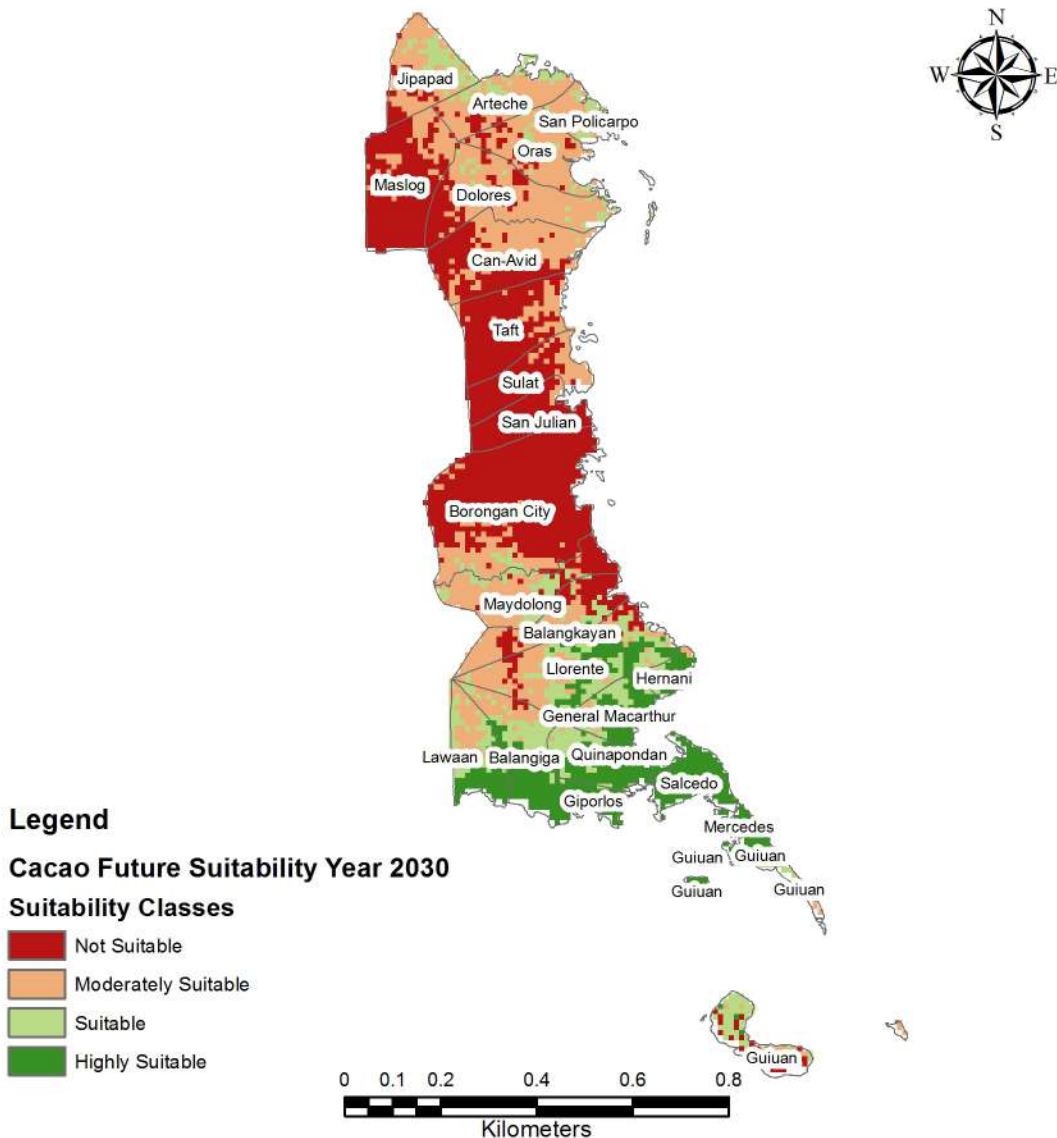
ABACA FUTURE SUITABILITY IN EASTERN SAMAR PROVINCE FOR THE YEAR 2030



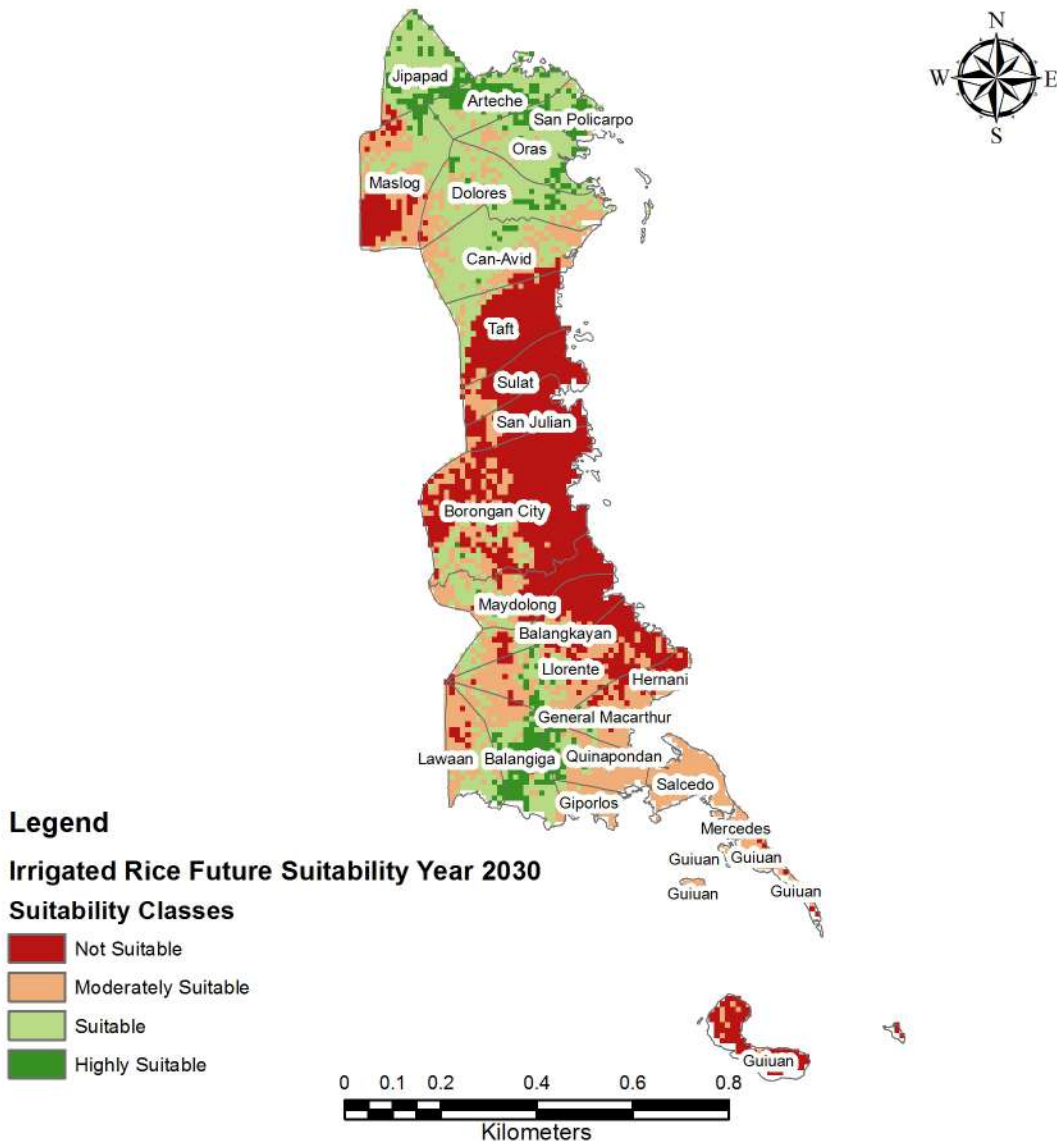
BANANA FUTURE SUITABILITY IN EASTERN SAMAR PROVINCE FOR THE YEAR 2030



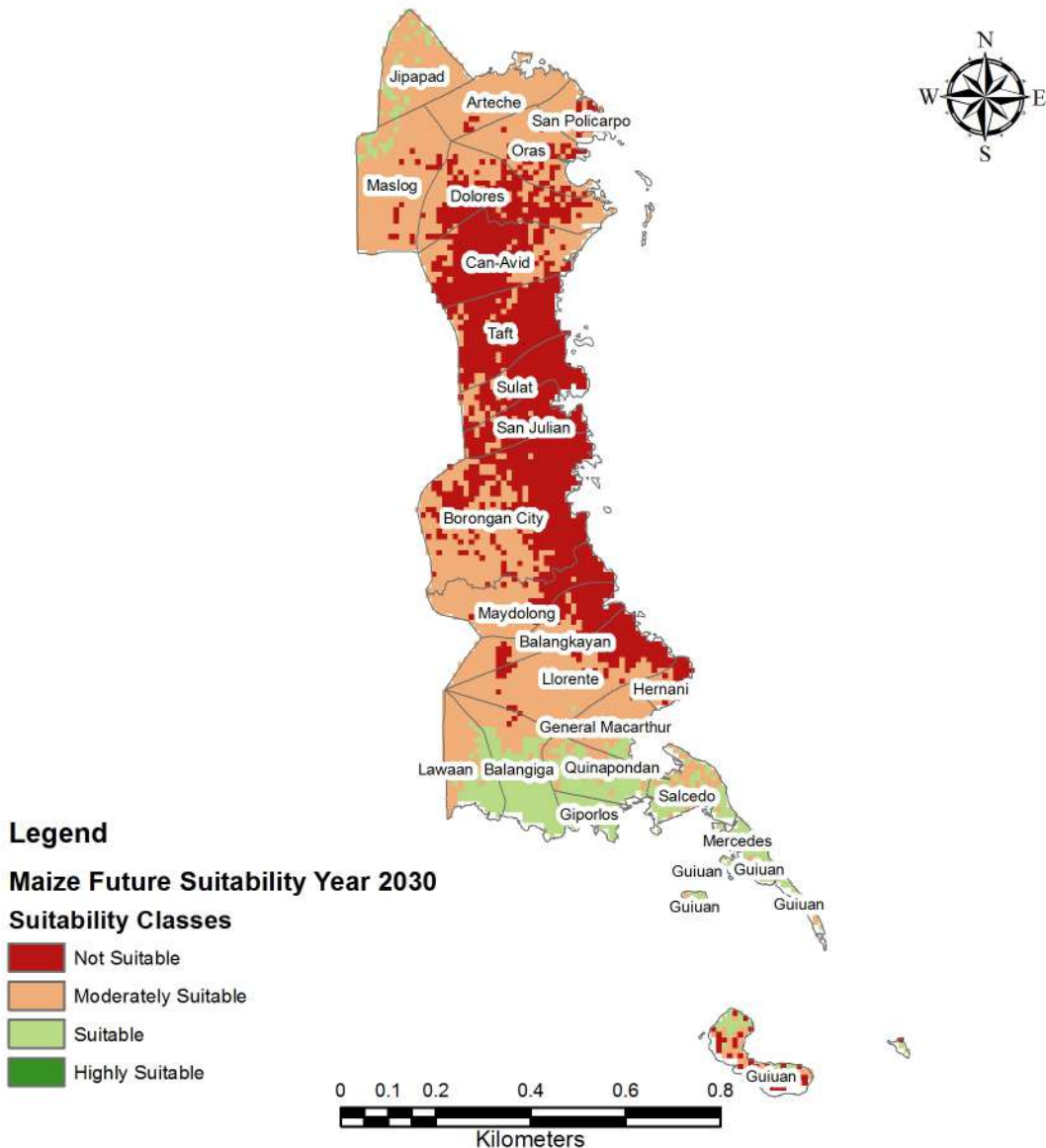
CACAO FUTURE SUITABILITY IN EASTERN SAMAR PROVINCE FOR THE YEAR 2030



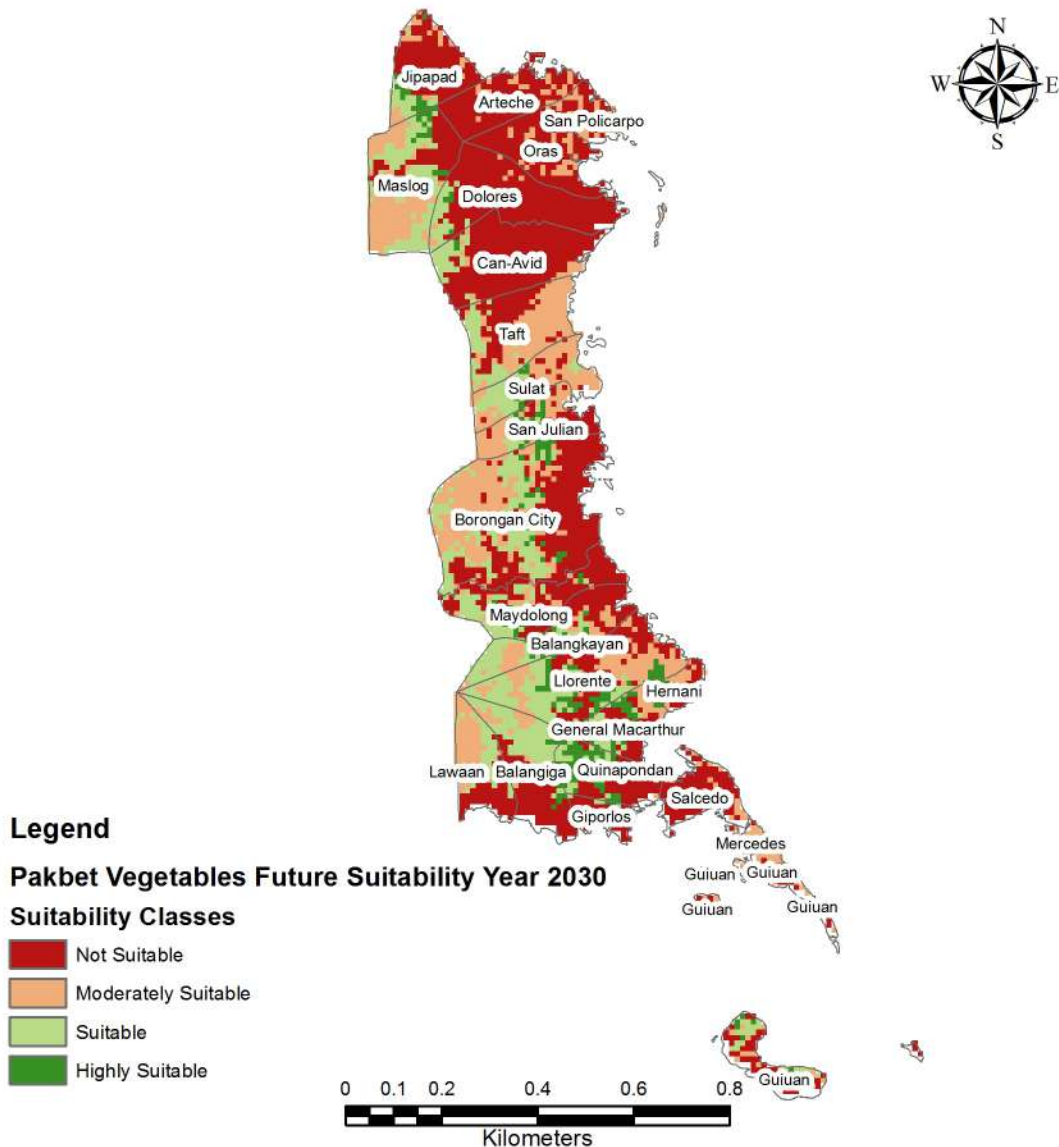
IRRIGATED RICE FUTURE SUITABILITY IN EASTERN SAMAR PROVINCE FOR THE YEAR 2030



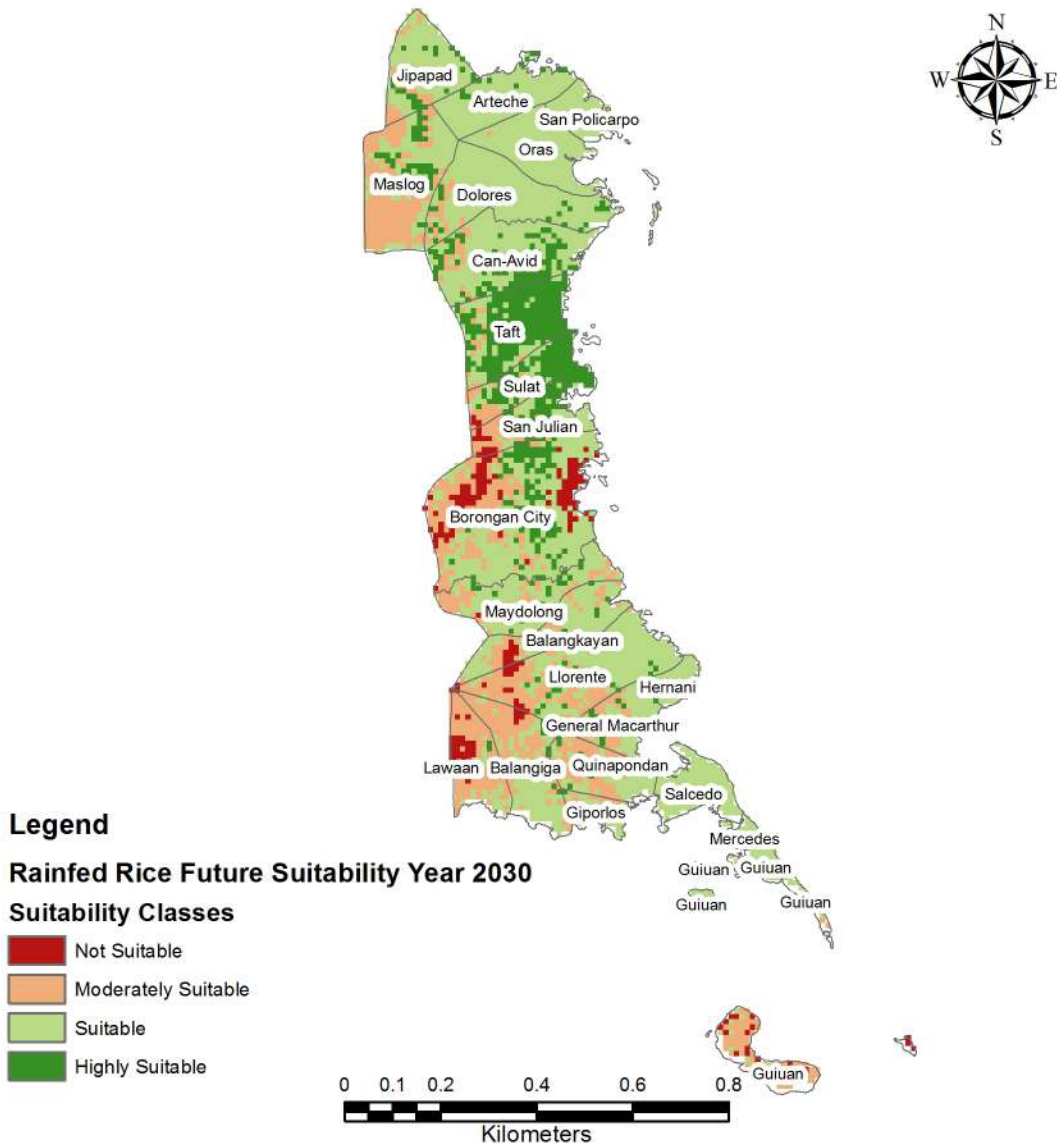
MAIZE FUTURE SUITABILITY IN EASTERN SAMAR PROVINCE FOR THE YEAR 2030



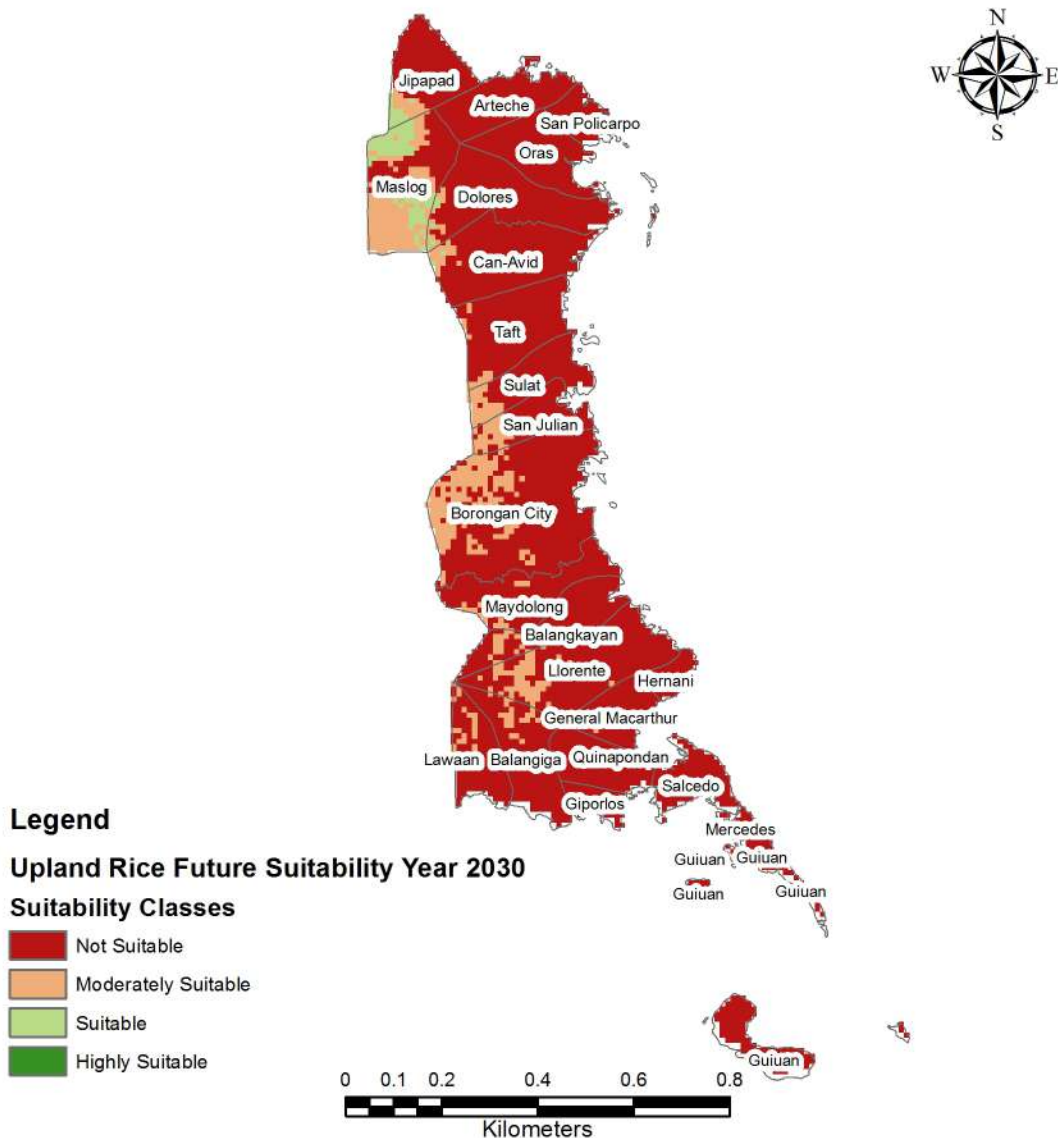
PAKBET VEGETABLES FUTURE SUITABILITY IN EASTERN SAMAR PROVINCE FOR THE YEAR 2030



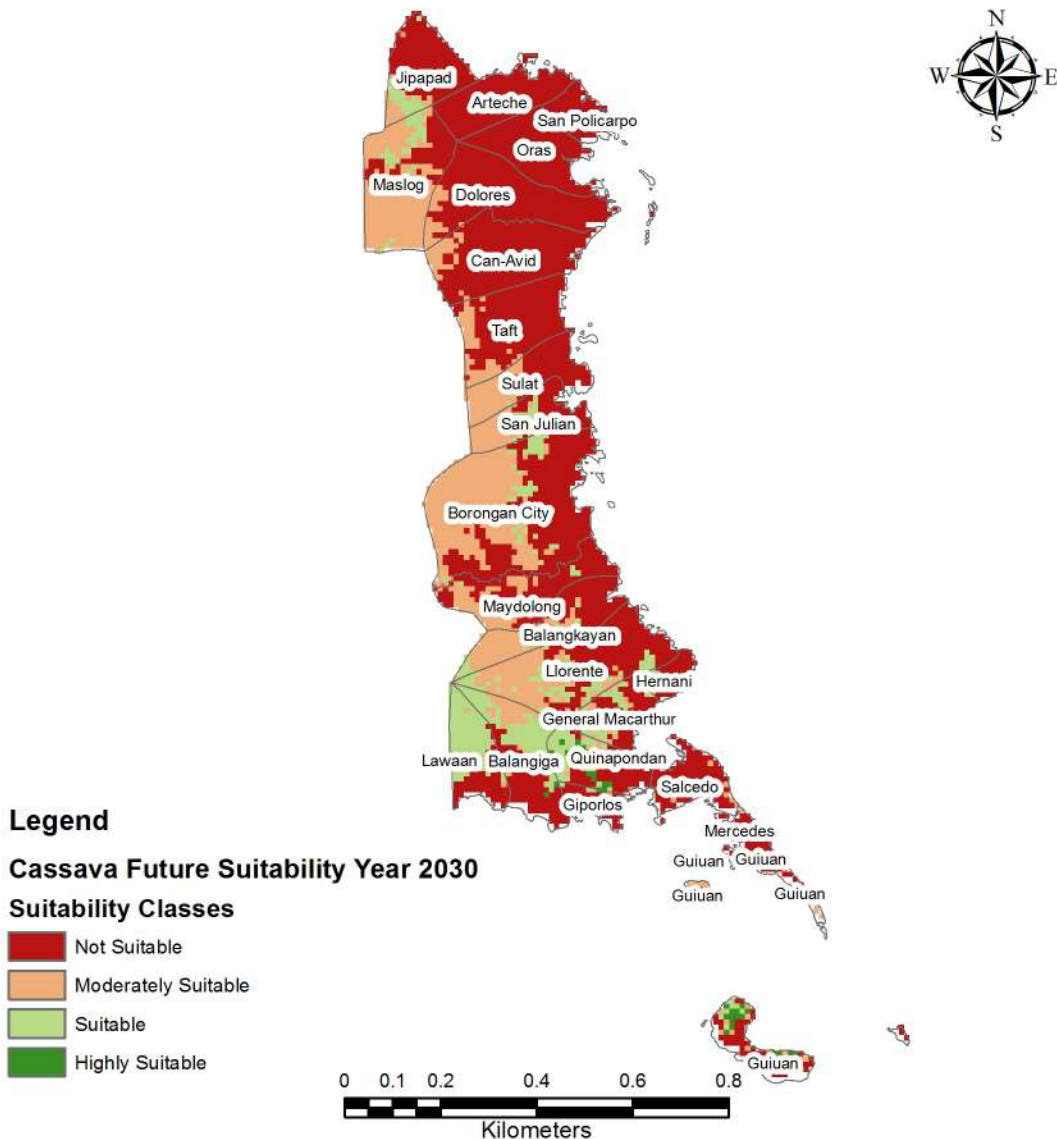
RAINFED RICE FUTURE SUITABILITY IN EASTERN SAMAR PROVINCE FOR THE YEAR 2030



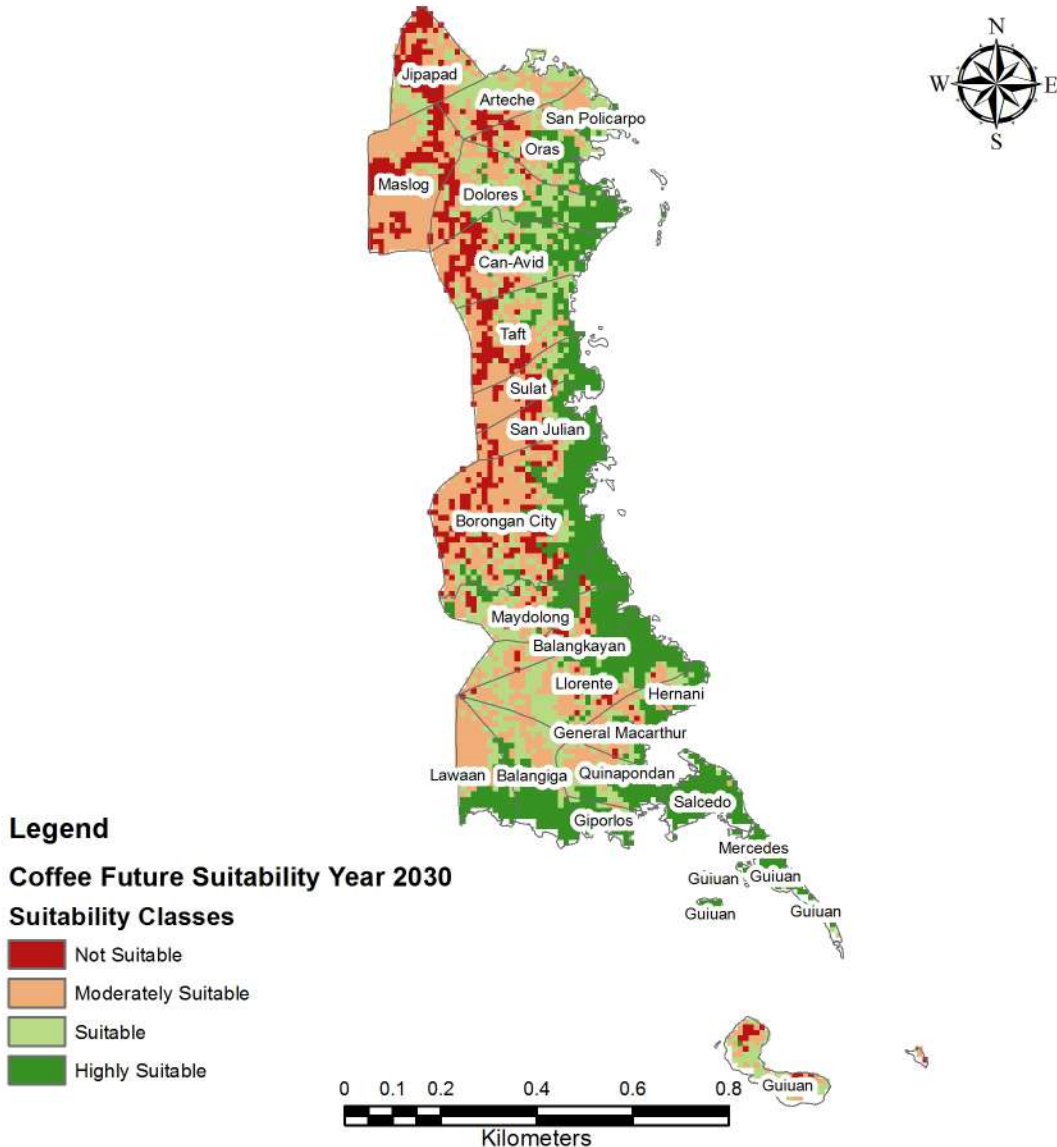
UPLAND RICE FUTURE SUITABILITY IN EASTERN SAMAR PROVINCE FOR THE YEAR 2030



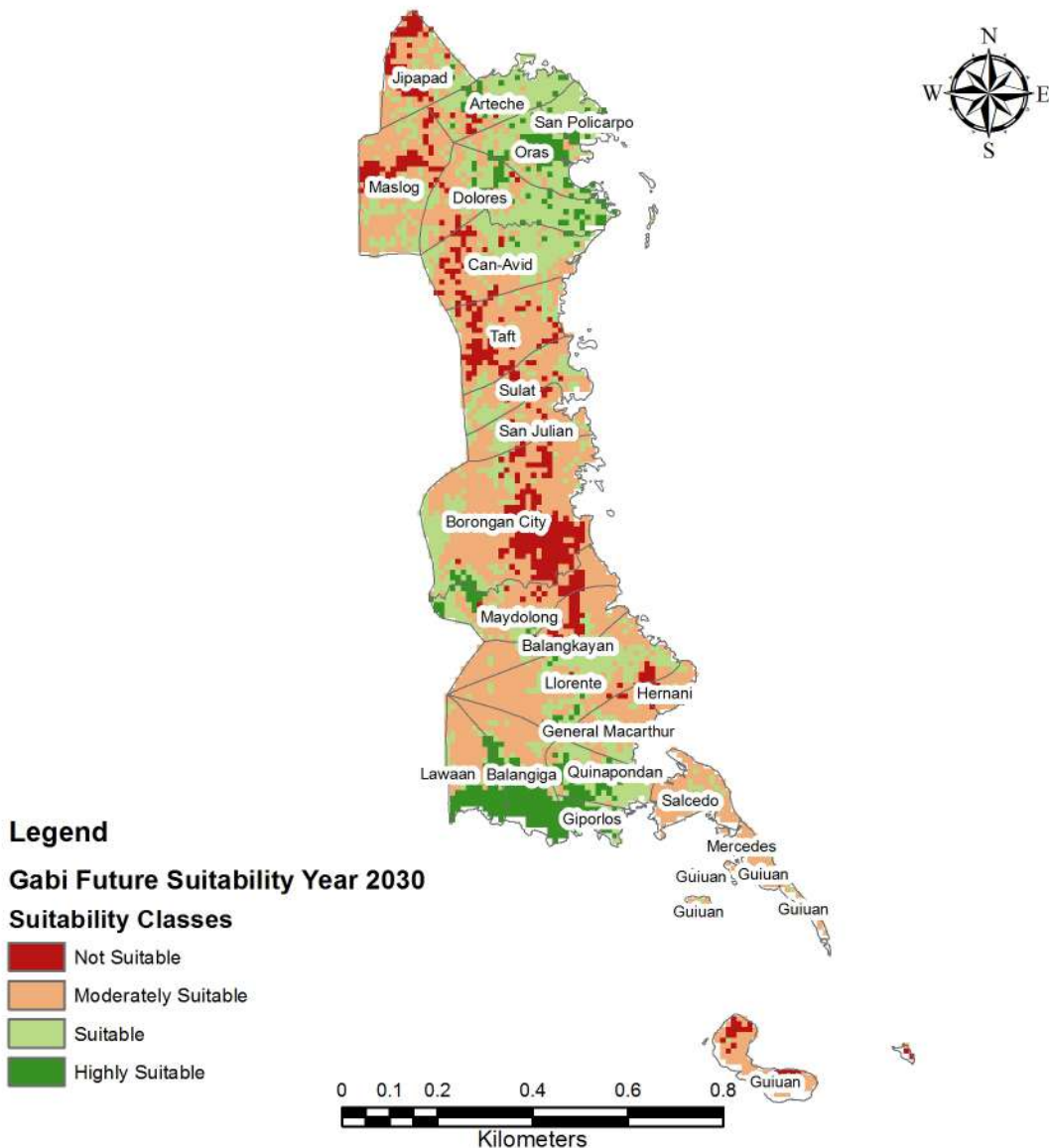
CASSAVA FUTURE SUITABILITY IN EASTERN SAMAR PROVINCE FOR THE YEAR 2030



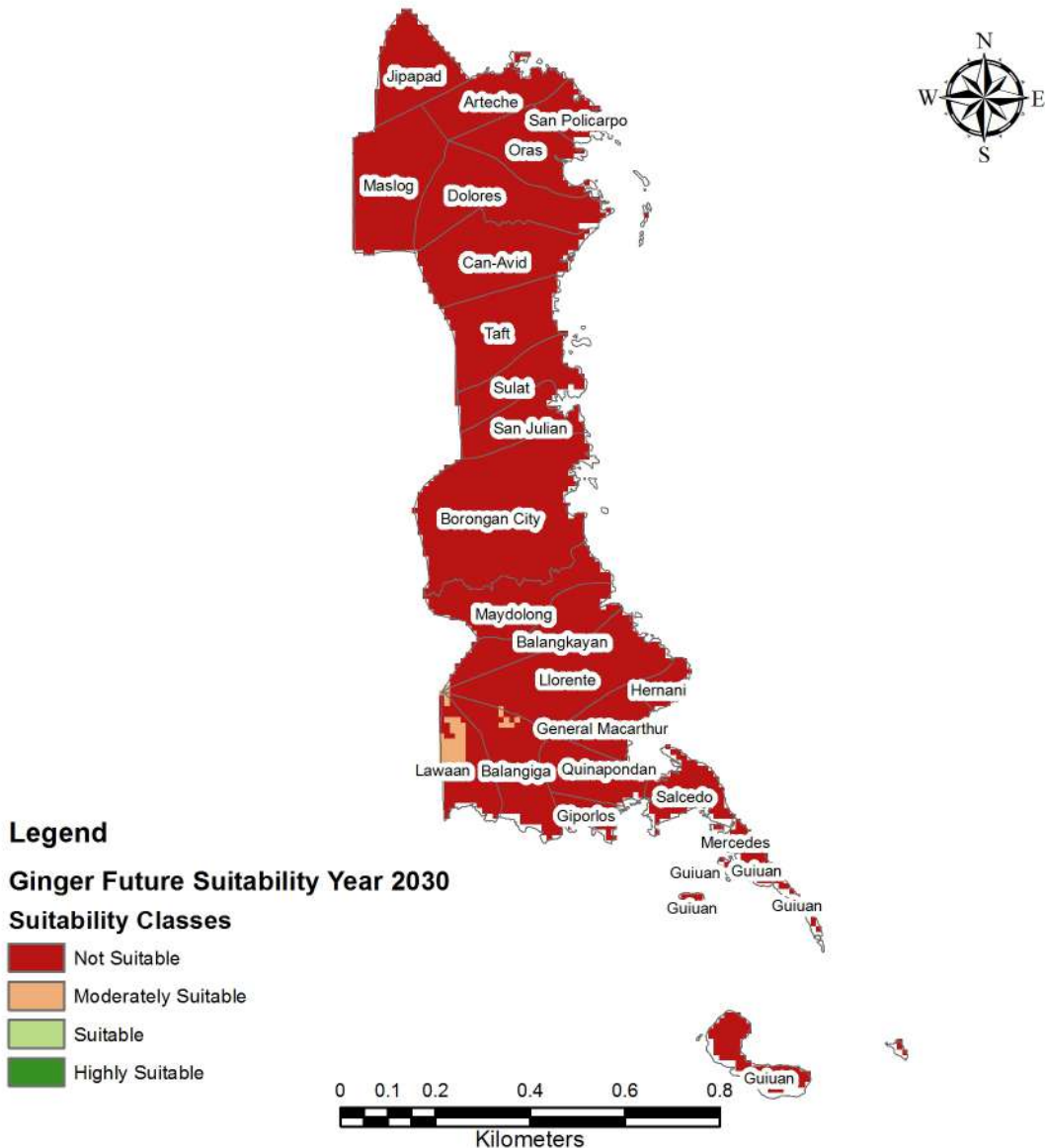
COFFEE FUTURE SUITABILITY IN EASTERN SAMAR PROVINCE FOR THE YEAR 2030



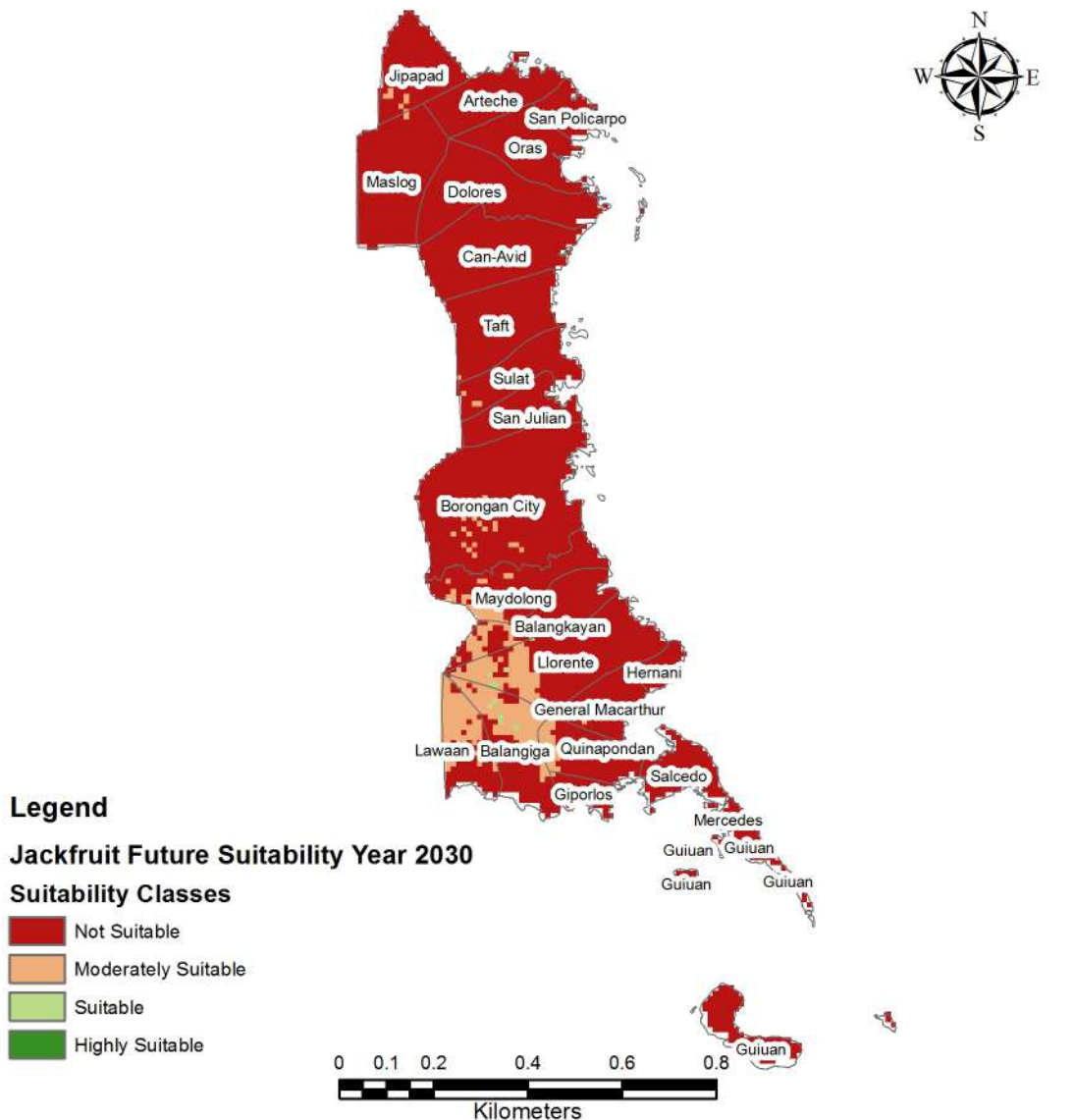
GABI FUTURE SUITABILITY IN EASTERN SAMAR PROVINCE FOR THE YEAR 2030



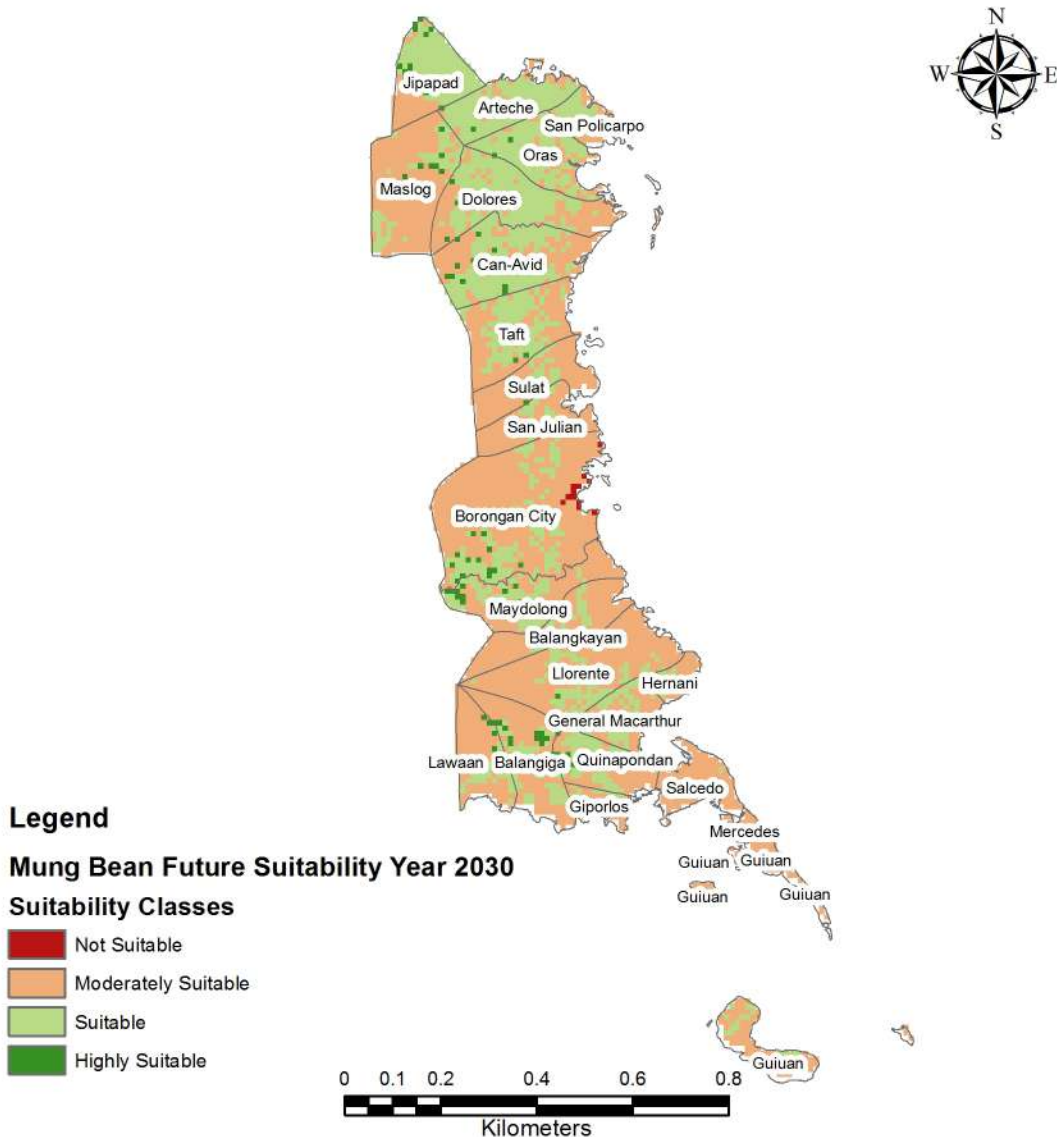
GINGER FUTURE SUITABILITY IN EASTERN SAMAR PROVINCE FOR THE YEAR 2030



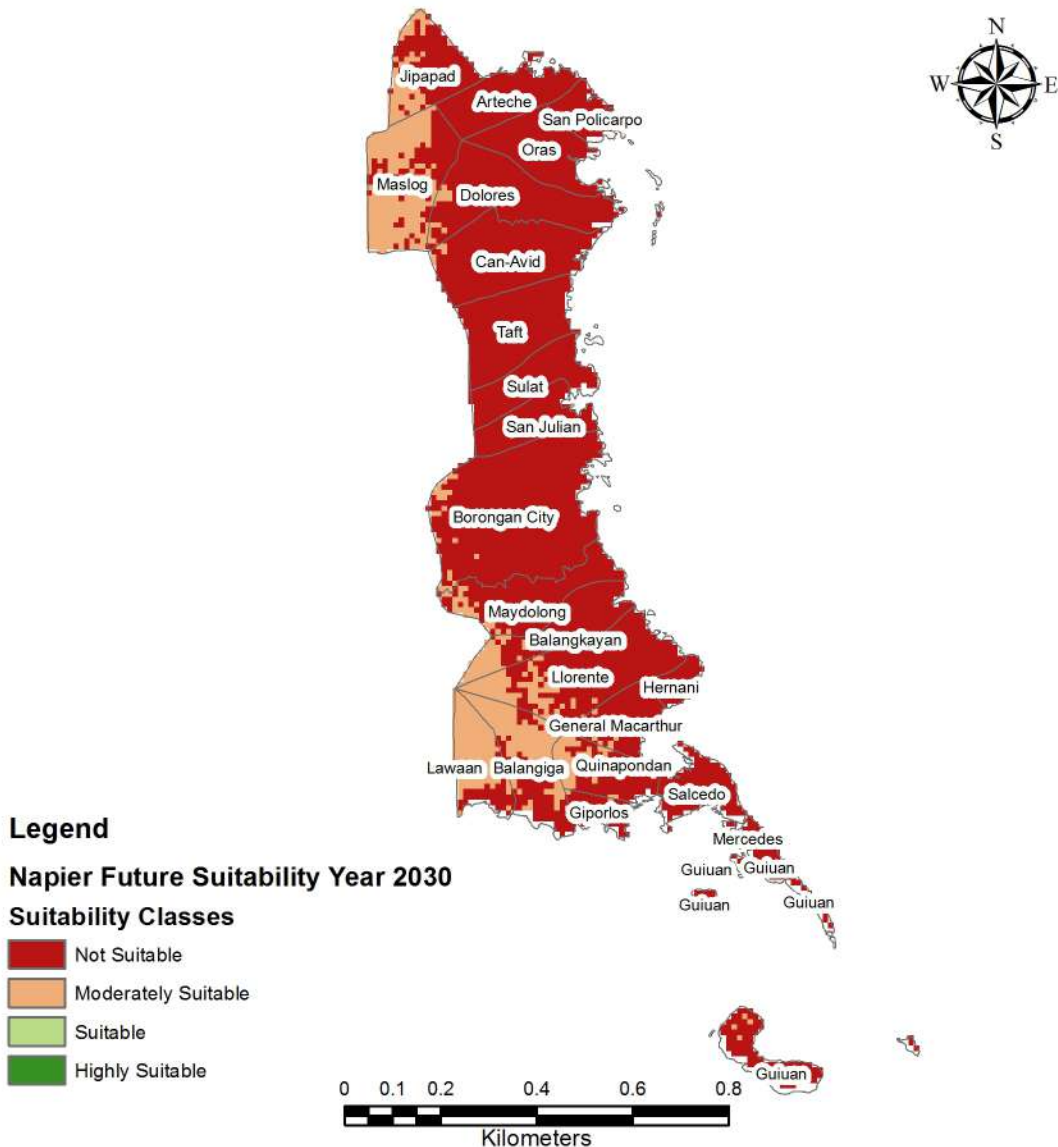
JACKFRUIT FUTURE SUITABILITY IN EASTERN SAMAR PROVINCE FOR THE YEAR 2030



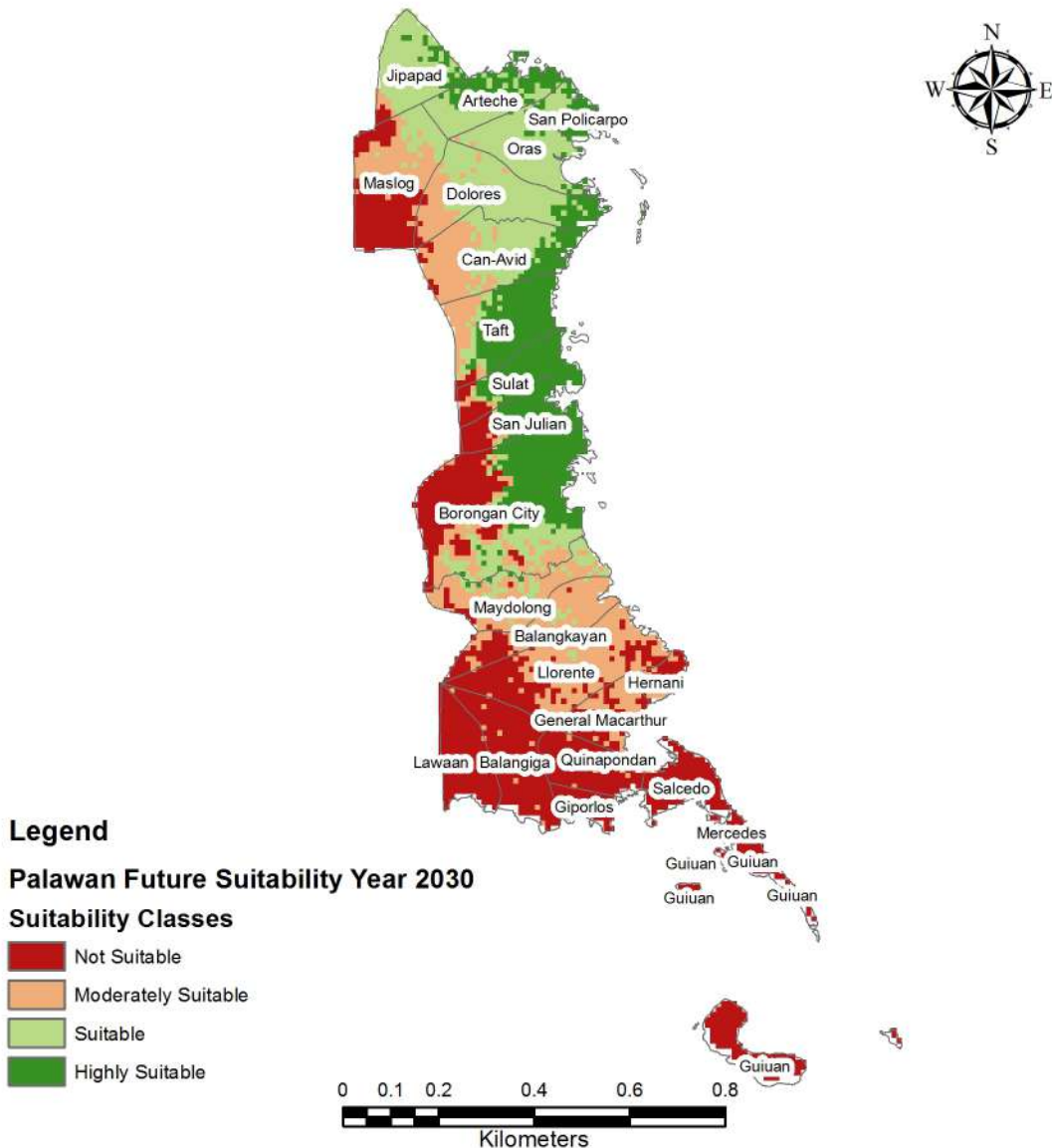
MUNG BEAN FUTURE SUITABILITY IN EASTERN SAMAR PROVINCE FOR THE YEAR 2030



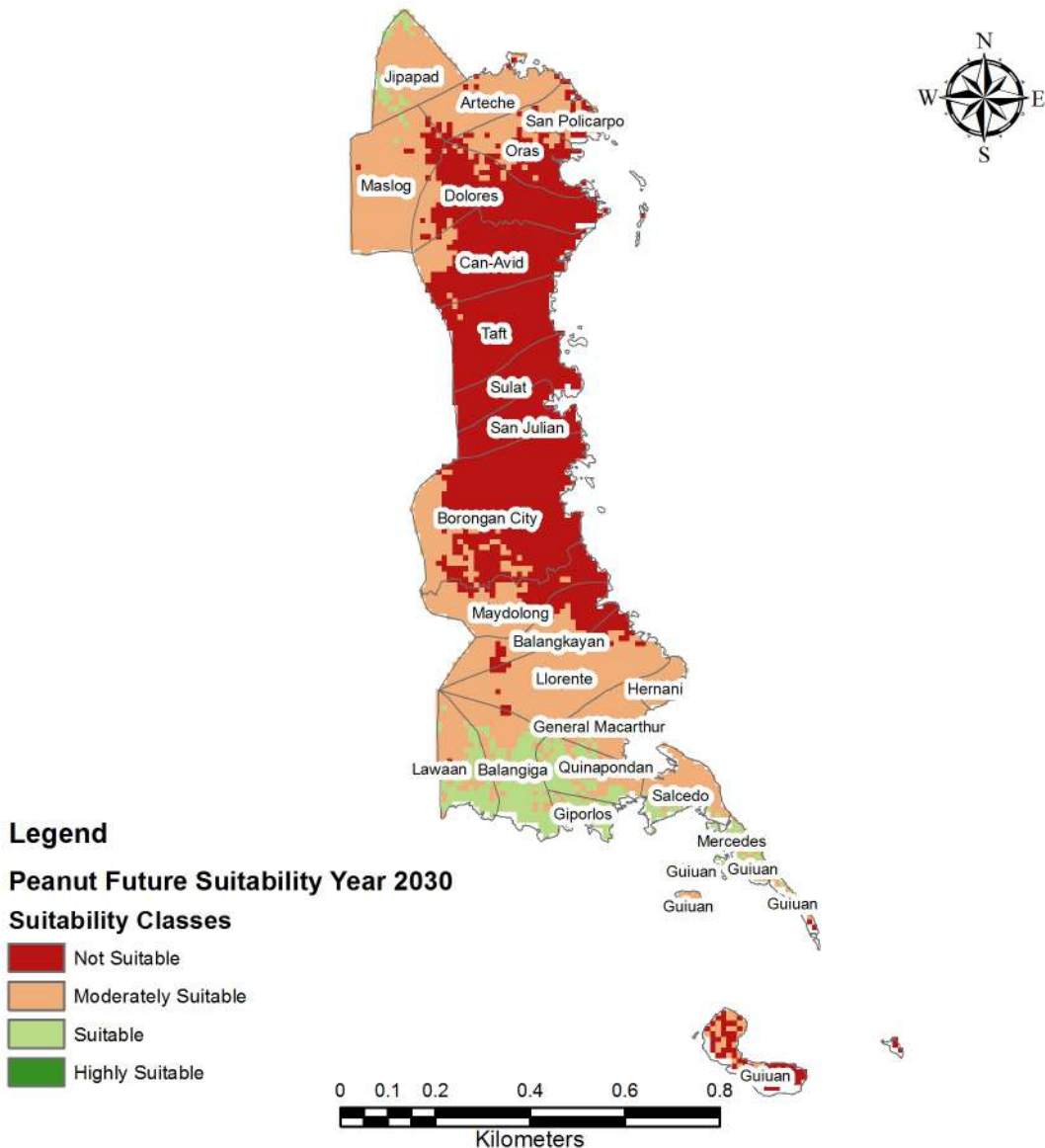
NAPIER FUTURE SUITABILITY IN EASTERN SAMAR PROVINCE FOR THE YEAR 2030



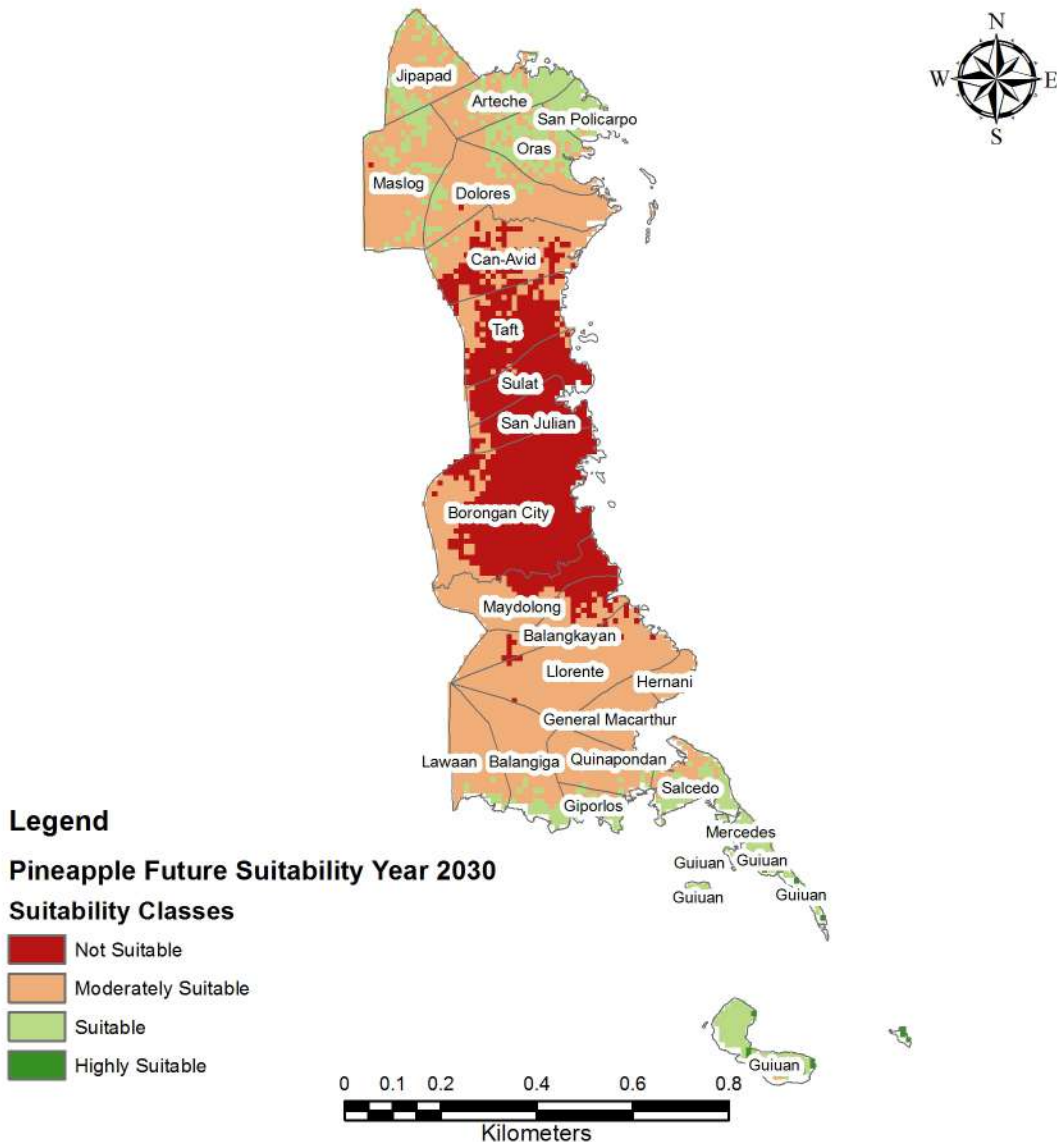
PALAWAN FUTURE SUITABILITY IN EASTERN SAMAR PROVINCE FOR THE YEAR 2030



PEANUT FUTURE SUITABILITY IN EASTERN SAMAR PROVINCE FOR THE YEAR 2030



PINEAPPLE FUTURE SUITABILITY IN EASTERN SAMAR PROVINCE FOR THE YEAR 2030



SWEET POTATO FUTURE SUITABILITY IN EASTERN SAMAR PROVINCE FOR THE YEAR 2030

