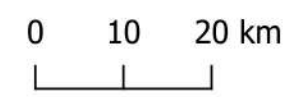
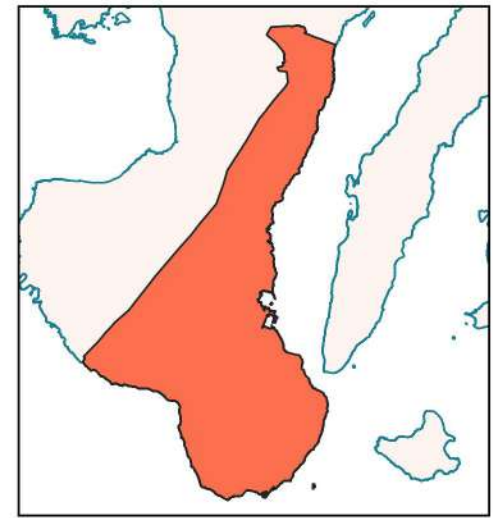


CRS: ESPG: 4326
(WGS 84)



Crop Occurrence

- Abaca Points
- Municipal Boundary

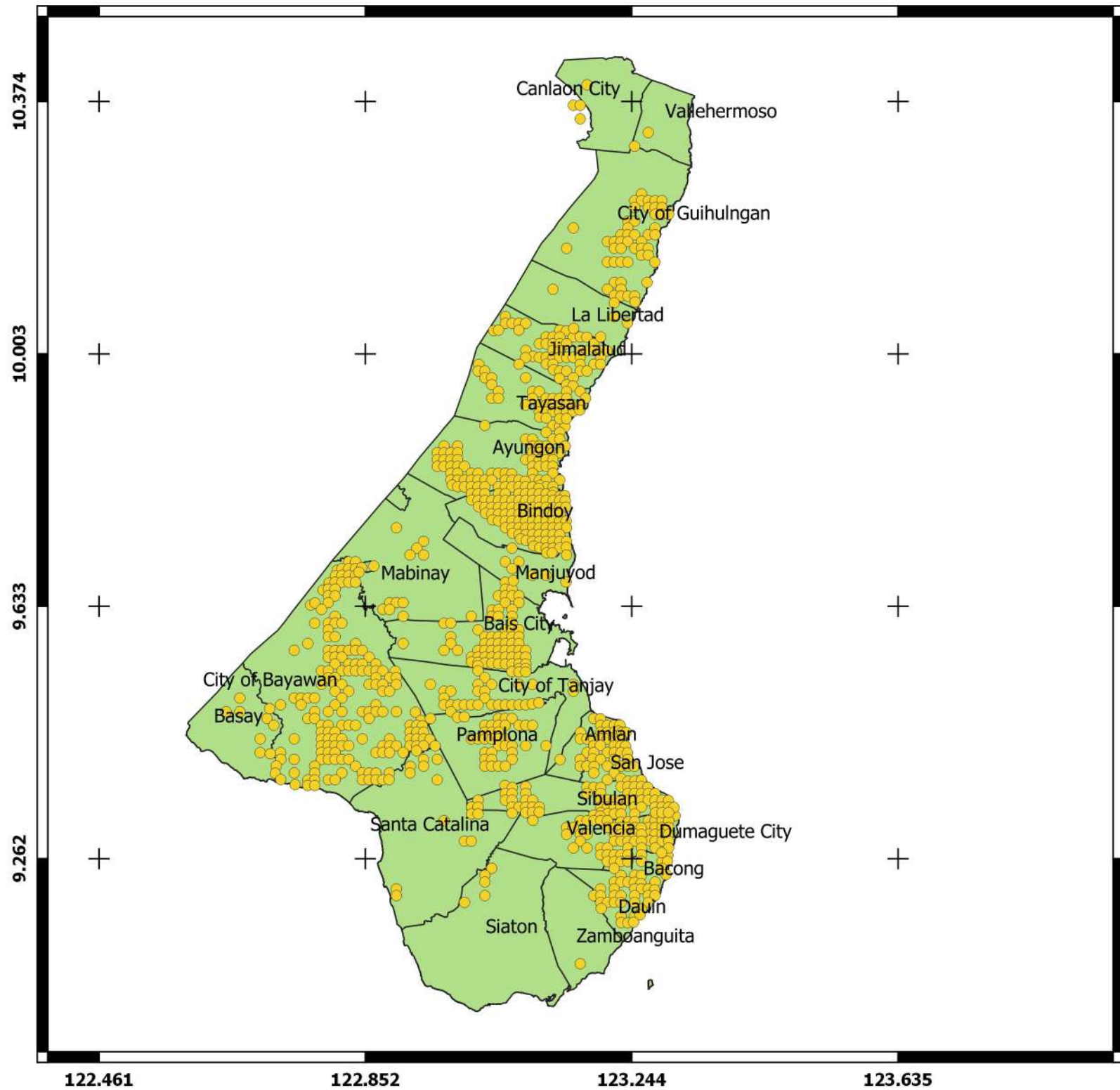


Research Project in Collaboration with:

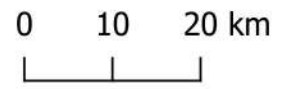


Mapped by: ABLoreto and DPLoreto (November 2019)

Data Collection Facilitated by: MNVSeñiño, DMBañoc, ABLoreto, JPGa, JSToledo & JACavero

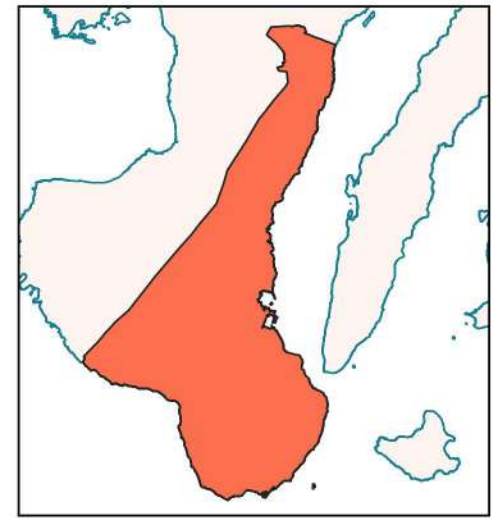


CRS: ESPG: 4326
(WGS 84)



Crop Occurrence

- Banana Points
- Municipal Boundary

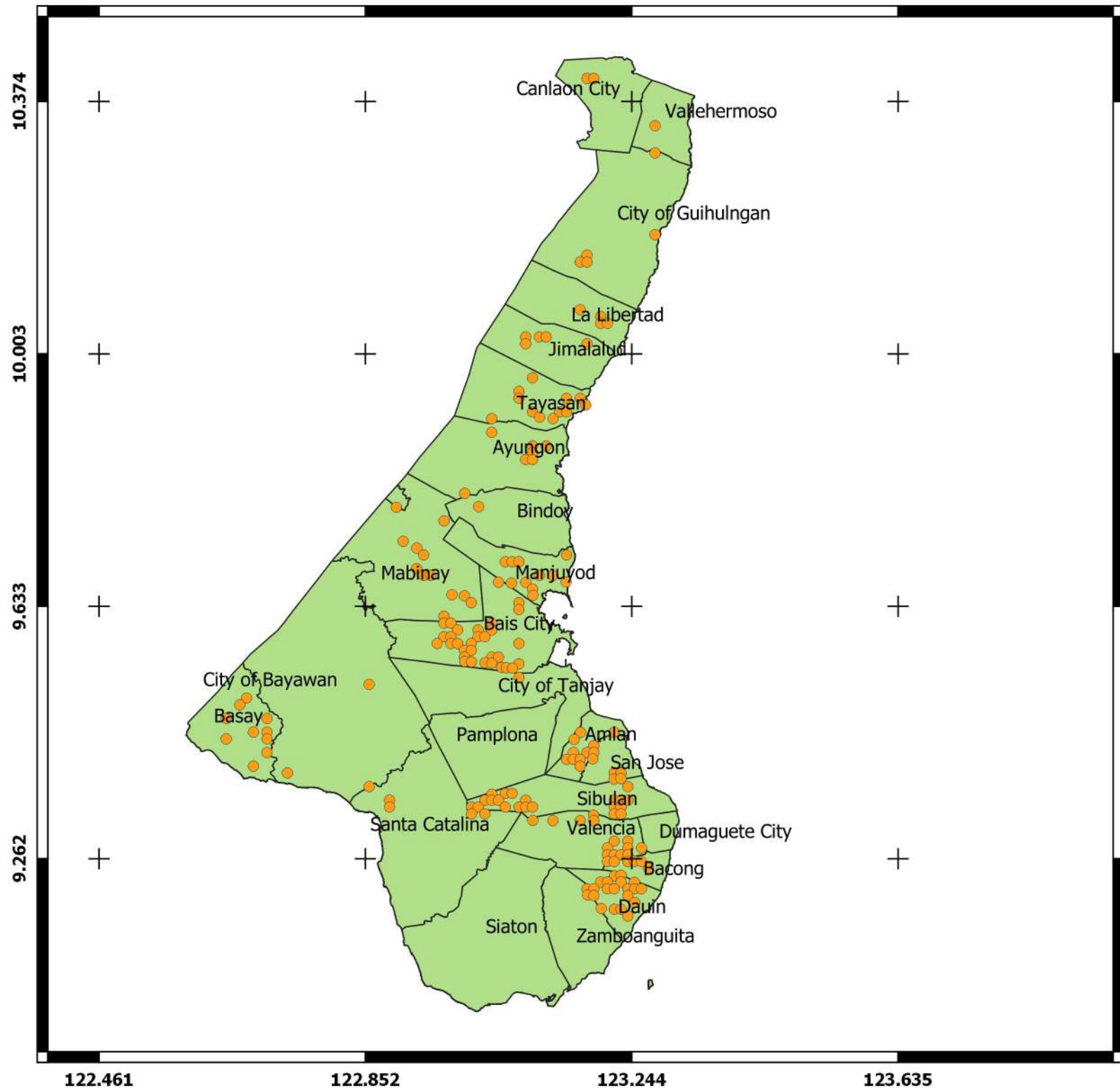


Research Project in Collaboration with:

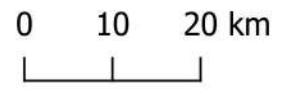


Mapped by: ABLoreto and DPLoreto (November 2019)

Data Collection Facilitated by: MNVSeñiño, DMBañoc, ABLoreto, JPGa, JSToledo & JACavero

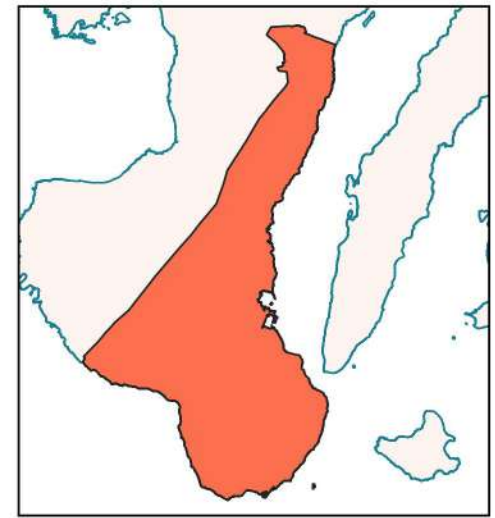


CRS: ESPG: 4326
(WGS 84)



Crop Occurrence

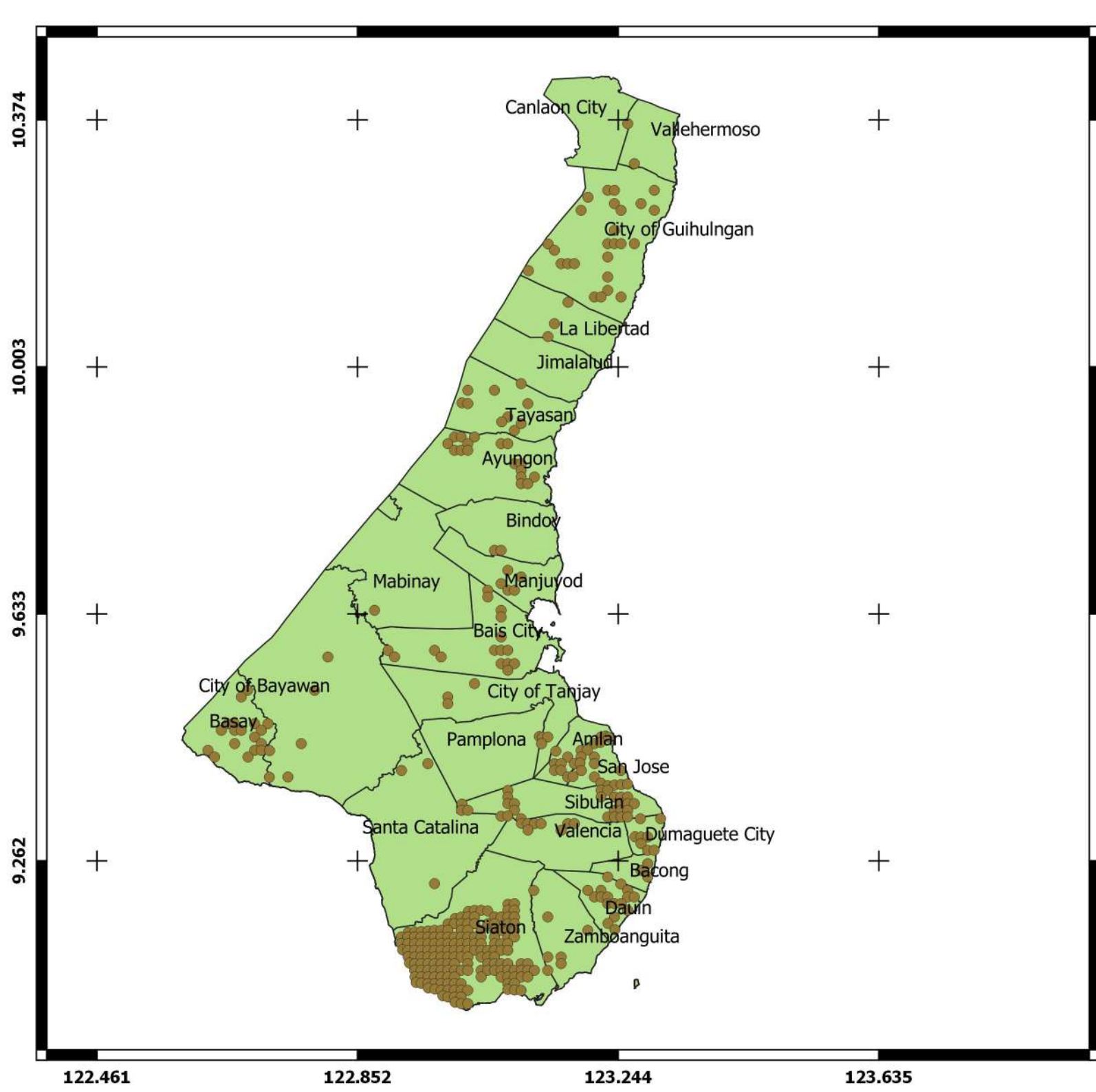
- Cacao Points
- Municipal Boundary



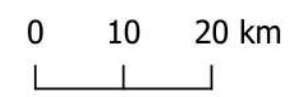
Research Project in Collaboration with:



Mapped by: ABLoreto and DPLoreto (November 2019)
 Data Collection Facilitated by: MNVSeñiño, DMBañoc,
 ABLoreto, JPGa,
 JSToledo & JACavero

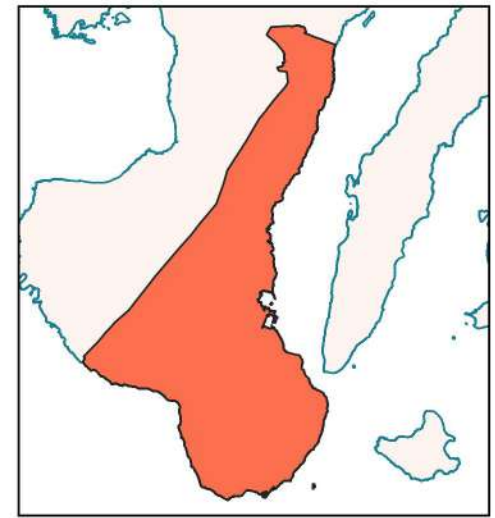


CRS: ESPG: 4326
(WGS 84)



Crop Occurrence

- Cassava Points
- Municipal Boundary

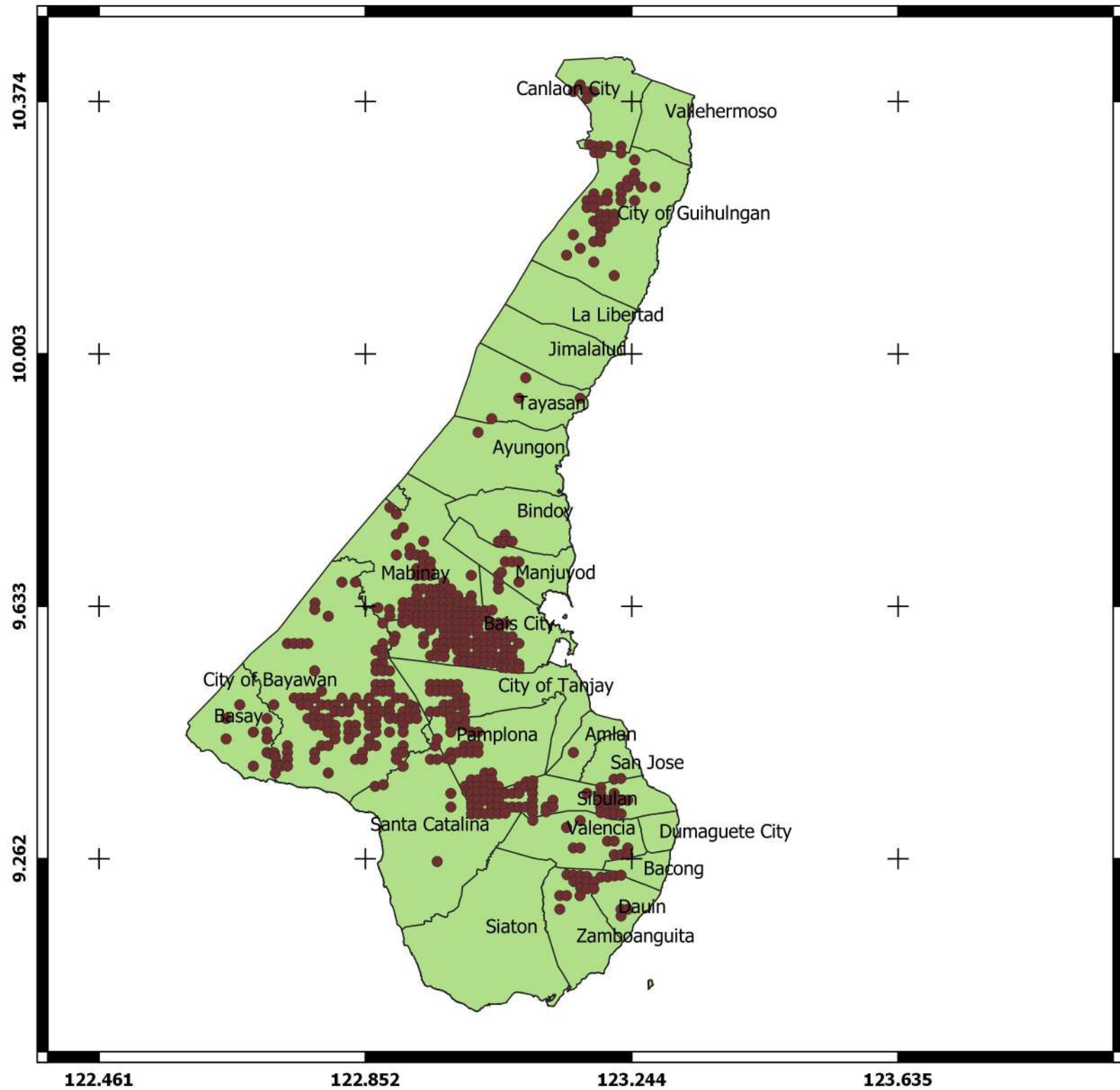


Research Project in Collaboration with:

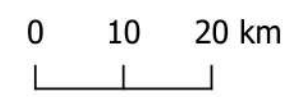


Mapped by: ABLoreto and DPLoreto (November 2019)

Data Collection Facilitated by: MNVSeñiño, DMBañoc, ABLoreto, JPGa, JSToledo & JACavero

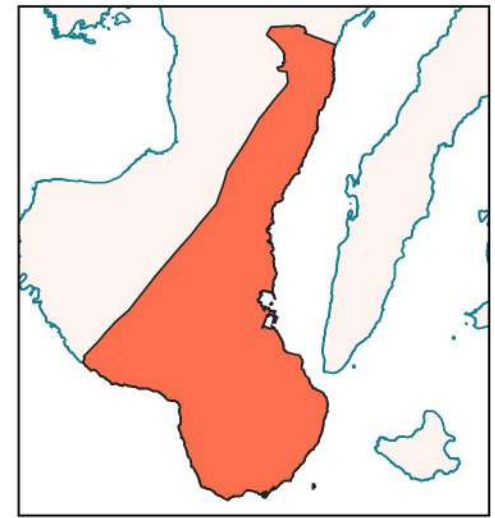


CRS: ESPG: 4326
(WGS 84)



Crop Occurrence

- Coffee Points
- Municipal Boundary

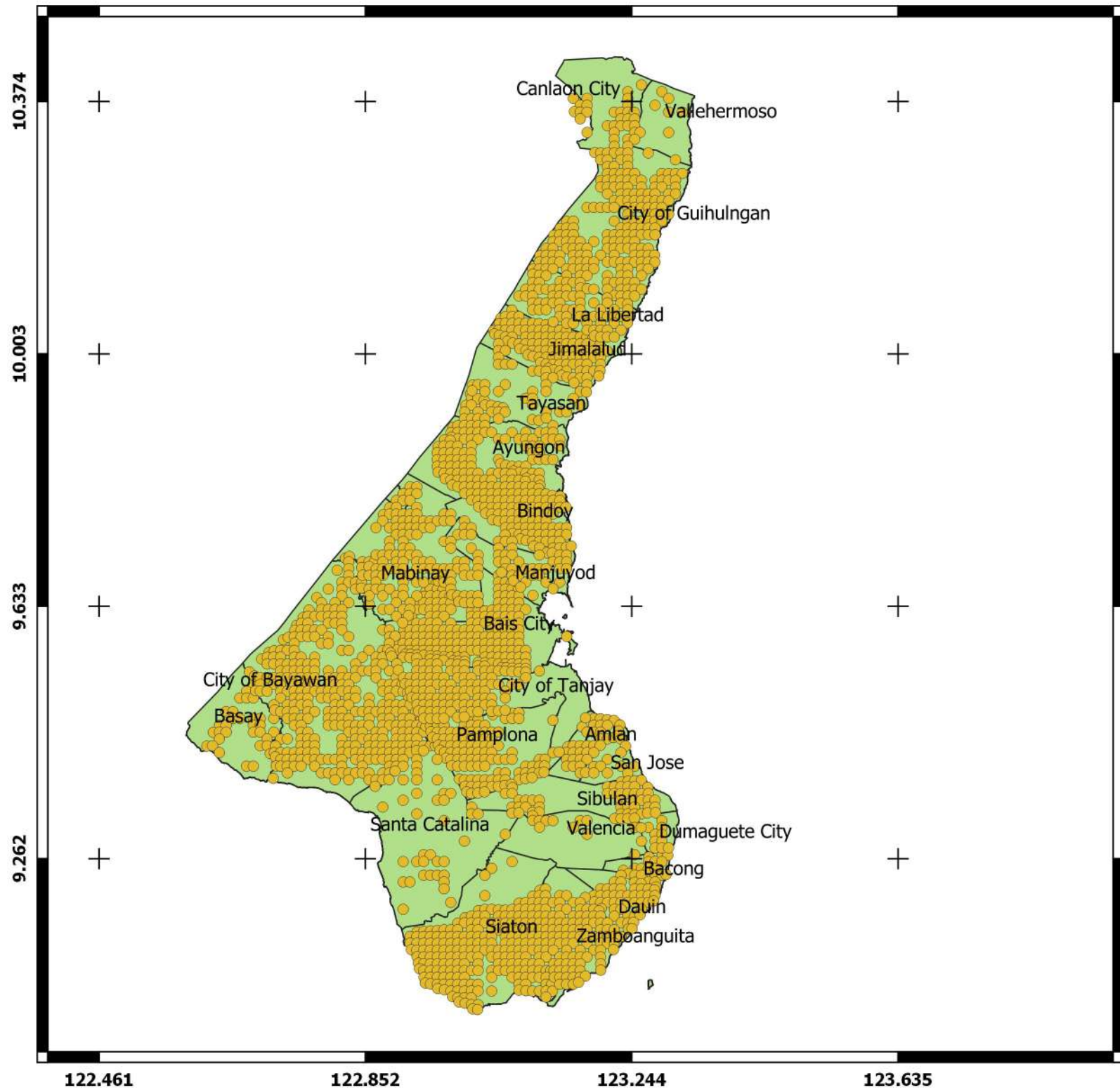


Research Project in Collaboration with:

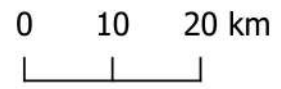


Mapped by: ABLoreto and DPLoreto (November 2019)

Data Collection Facilitated by: MNVSeñiño, DMBañoc, ABLoreto, JPGa, JSToledo & JACavero

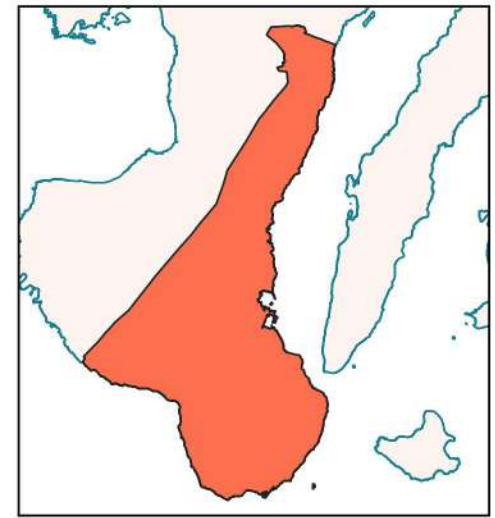


CRS: ESPG: 4326
(WGS 84)



Crop Occurrence

- Corn Points
- Municipal Boundary

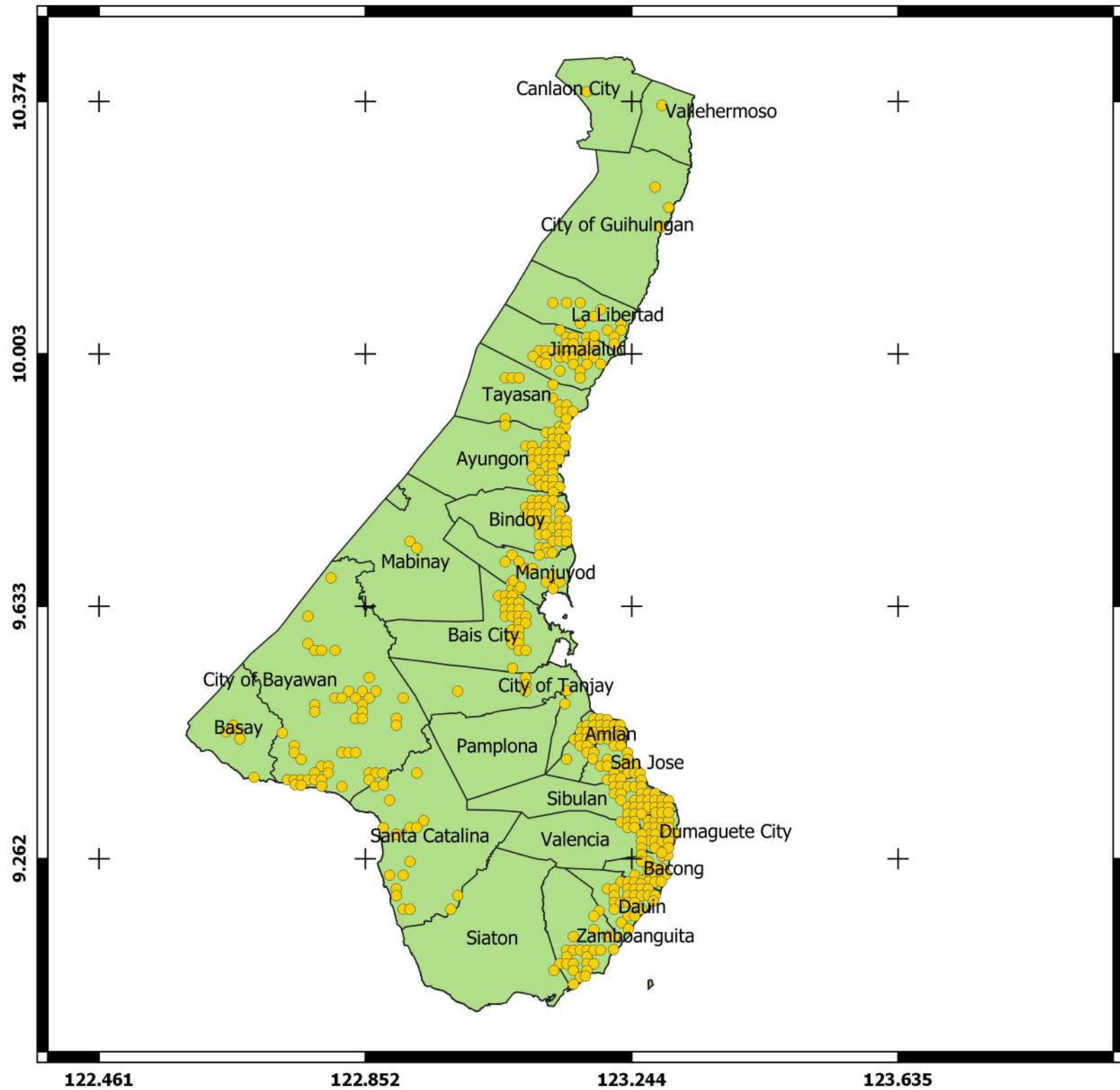


Research Project in Collaboration with:

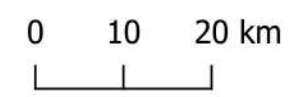


Mapped by: ABLoreto and DPLoreto (November 2019)

Data Collection Facilitated by: MNVSeñiño, DMBañoc, ABLoreto, JPGa, JSToledo & JACavero

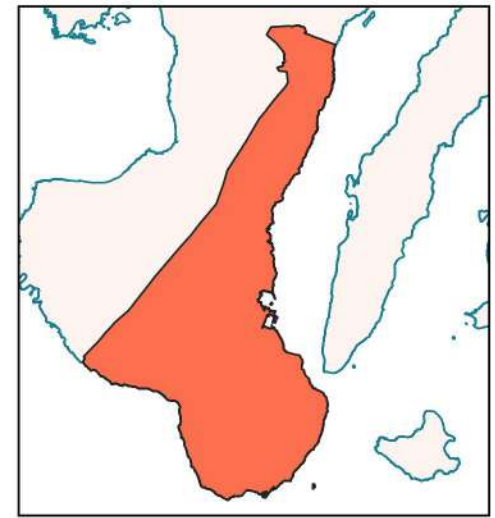


CRS: ESPG: 4326
(WGS 84)



Crop Occurrence

- Mango Points
- Municipal Boundary

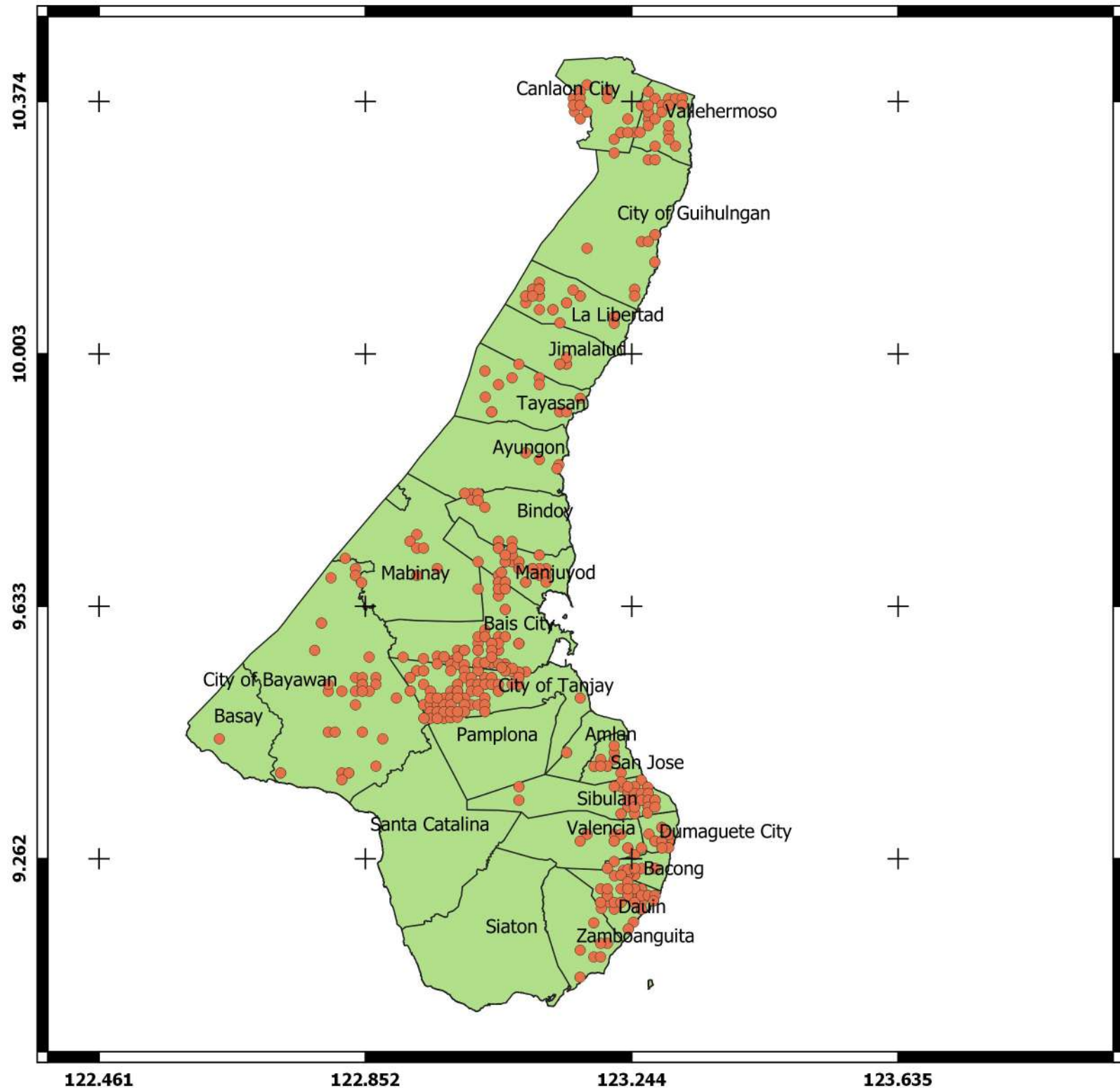


Research Project in Collaboration with:

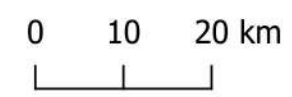


Mapped by: ABLoreto and DPLoreto (November 2019)

Data Collection Facilitated by: MNVSeñiño, DMBañoc, ABLoreto, JPGa, JSToledo & JACavero

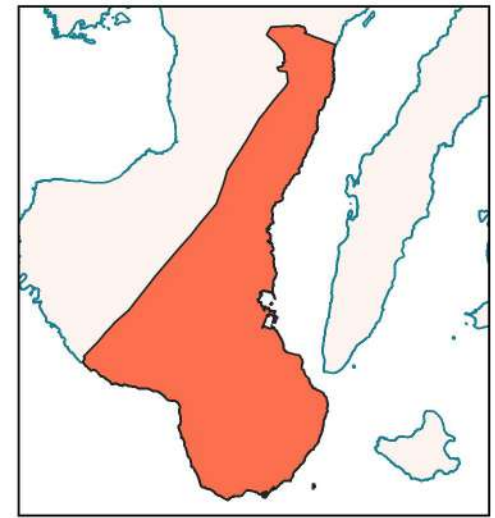


CRS: ESPG: 4326
(WGS 84)



Crop Occurrence

- Pinakbet Points
- Municipal Boundary

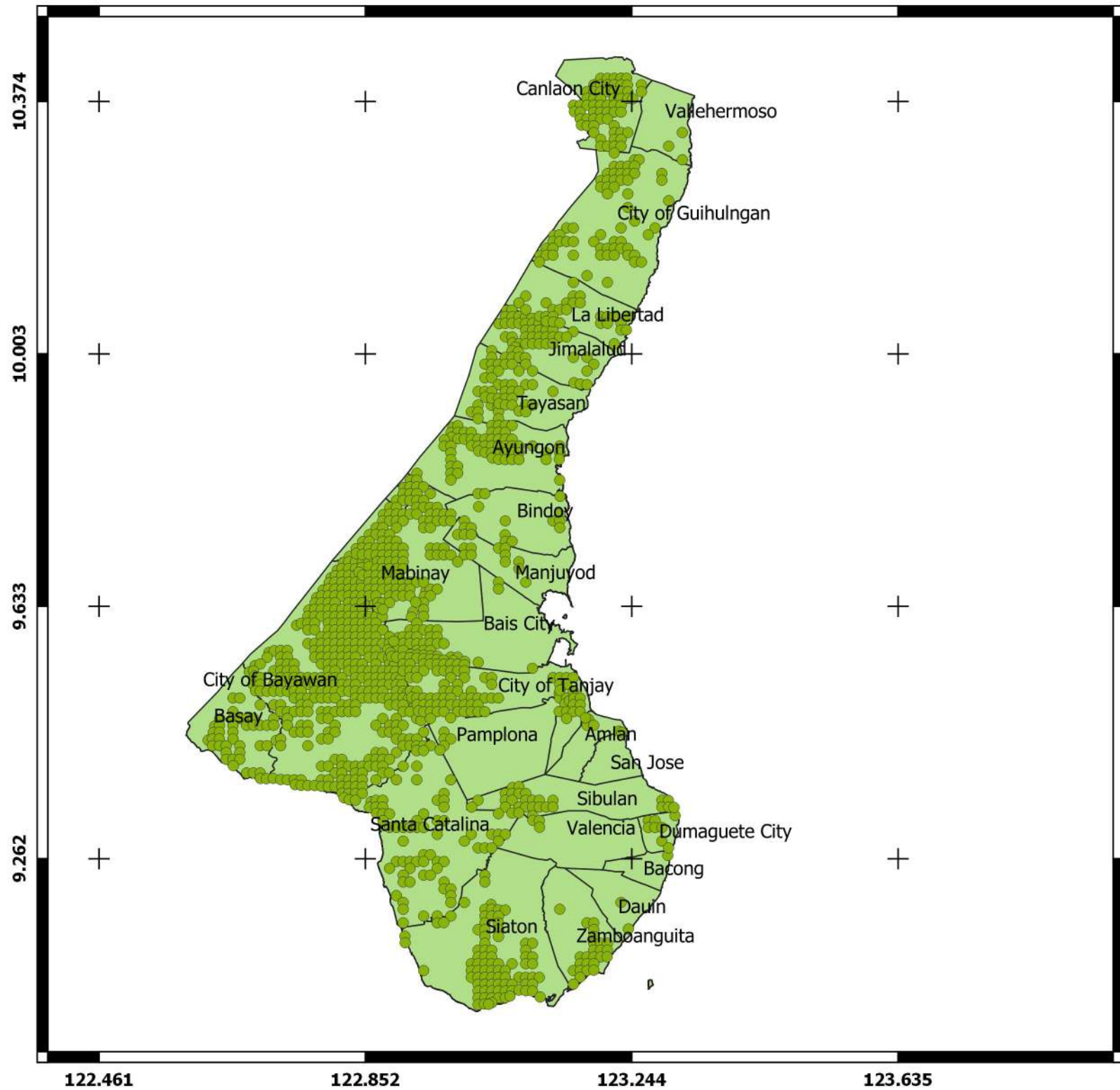


Research Project in Collaboration with:

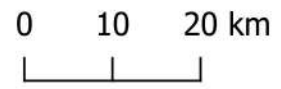


Mapped by: ABLoreto and DPLoreto (November 2019)

Data Collection Facilitated by: MNVSeñiño, DMBañoc, ABLoreto, JPGa, JSToledo & JACavero

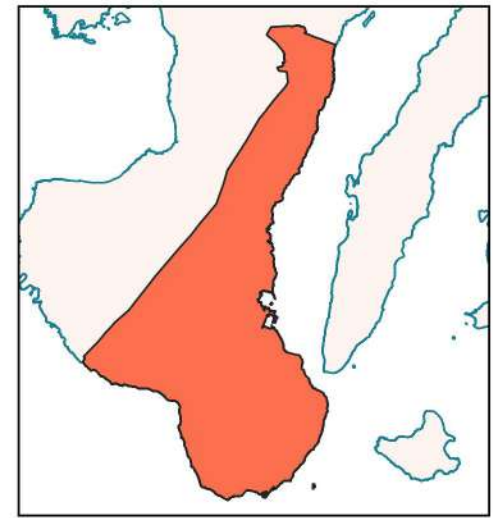


CRS: ESPG: 4326
(WGS 84)



Crop Occurrence

- Rice Points
- Municipal Boundary

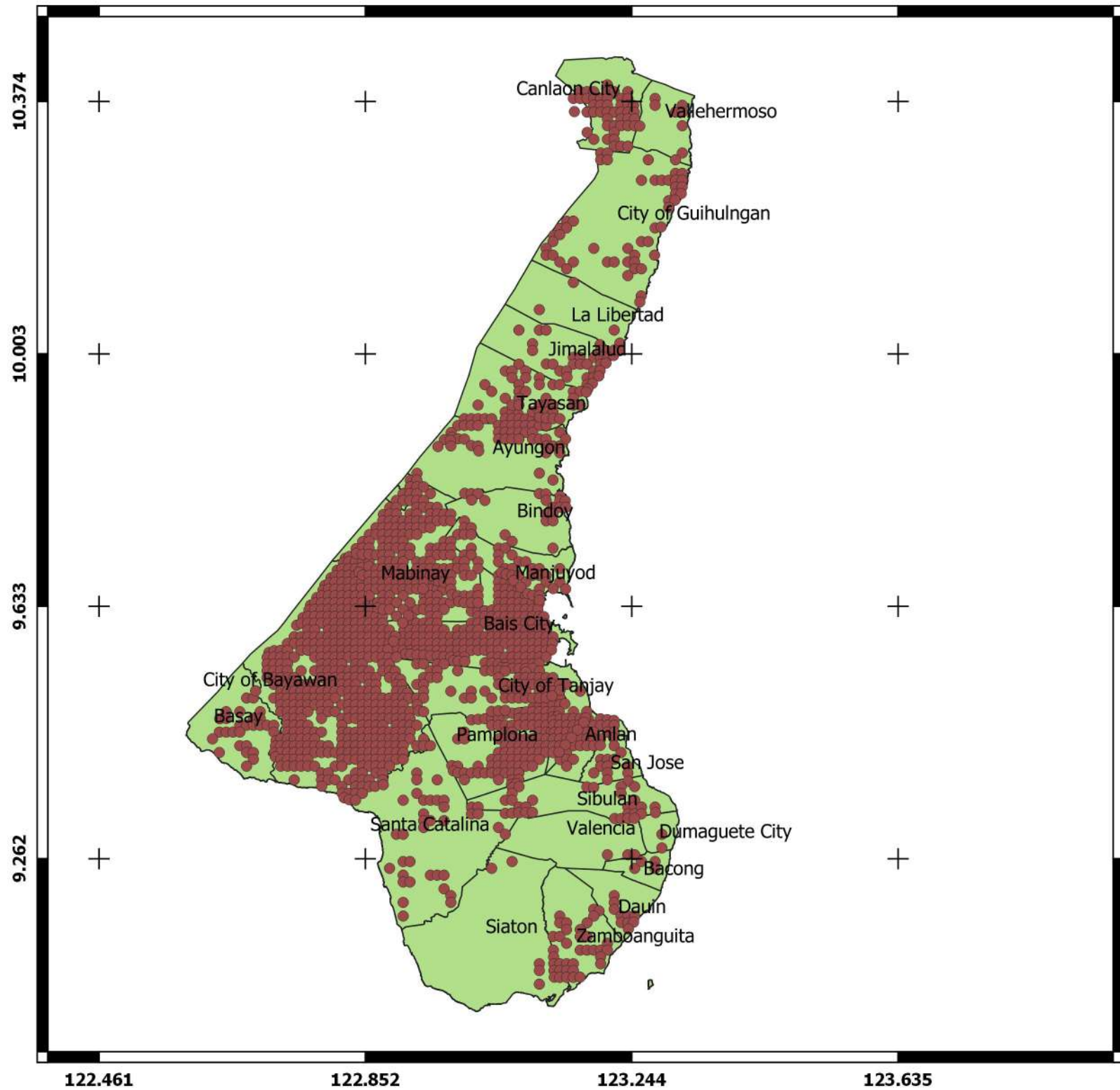


Research Project in Collaboration with:

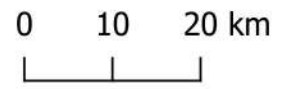


Mapped by: ABLoreto and DPLoreto (November 2019)

Data Collection Facilitated by: MNVSeñiño, DMBañoc, ABLoreto, JPGa, JSToledo & JACavero

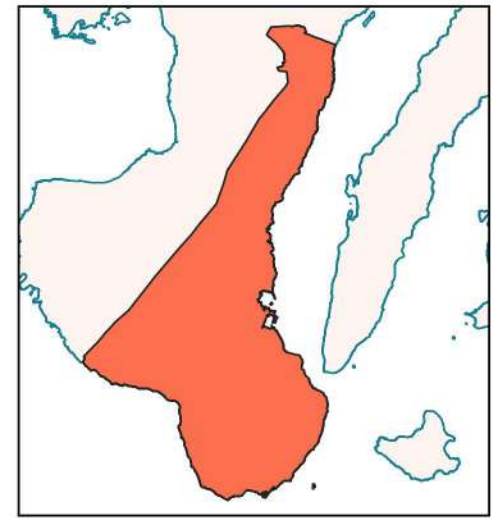


CRS: ESPG: 4326
(WGS 84)



Crop Occurrence

- Sugarcane Points
- Municipal Boundary

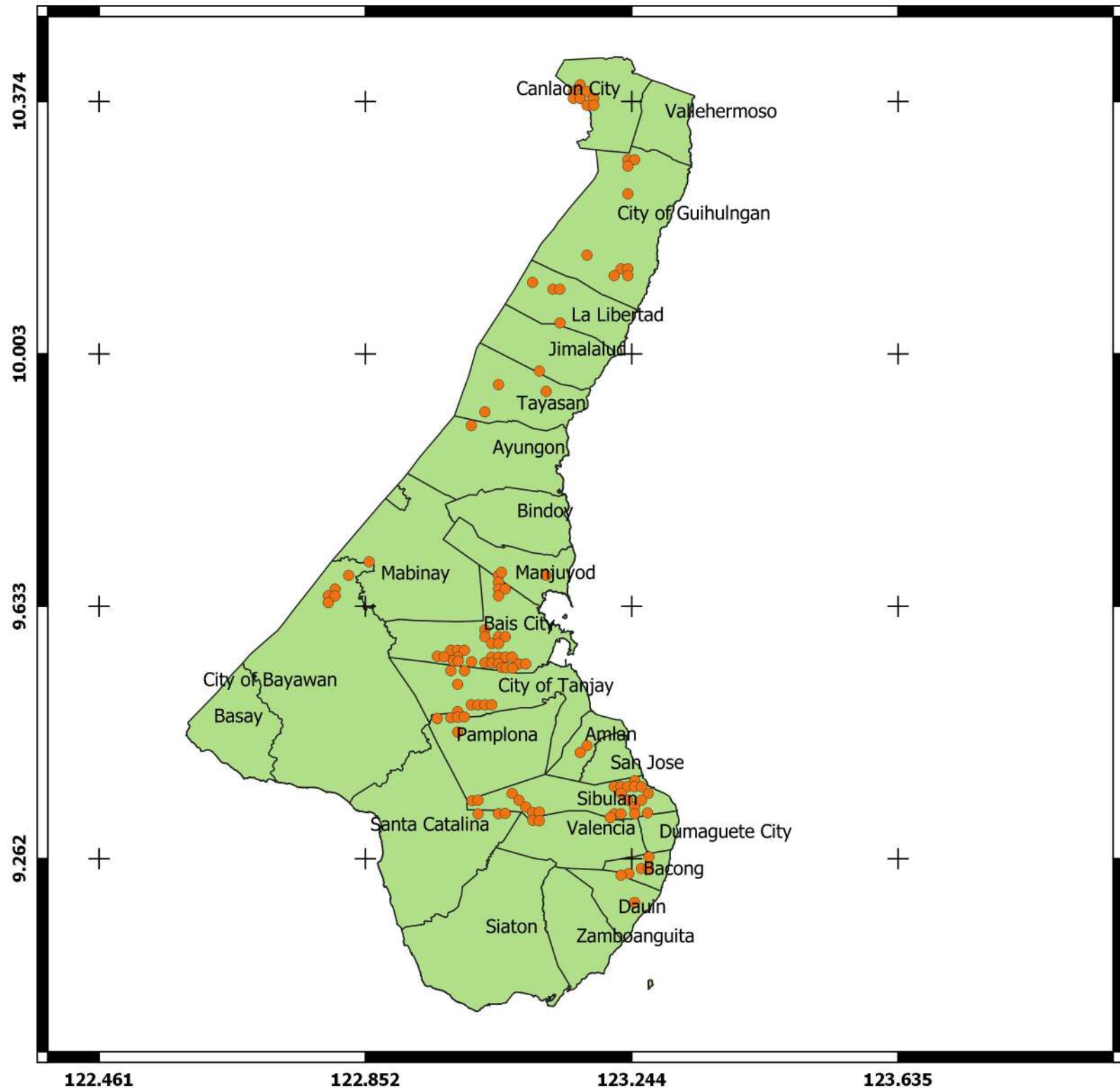


Research Project in Collaboration with:

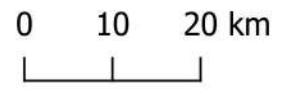


Mapped by: ABLoreto and DPLoreto (November 2019)

Data Collection Facilitated by: MNVSeñiño, DMBañoc, ABLoreto, JPGa, JSToledo & JACavero

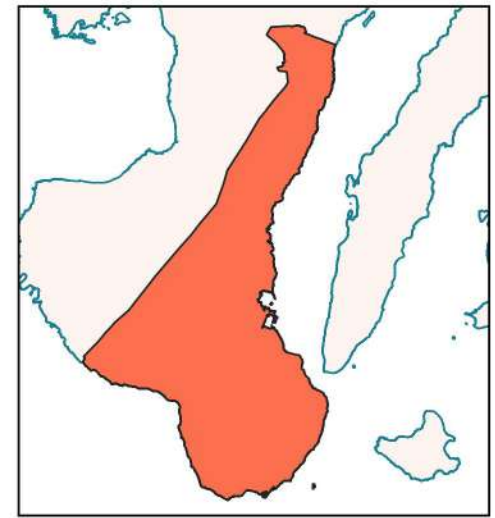


CRS: ESPG: 4326
(WGS 84)



Crop Occurrence

- Sweetpotato Points
- Municipal Boundary



Research Project in Collaboration with:



Mapped by: ABLoreto and DPLoreto (November 2019)

Data Collection Facilitated by: MNVSeñiño, DMBañoc, ABLoreto, JPGa, JSToledo & JACavero