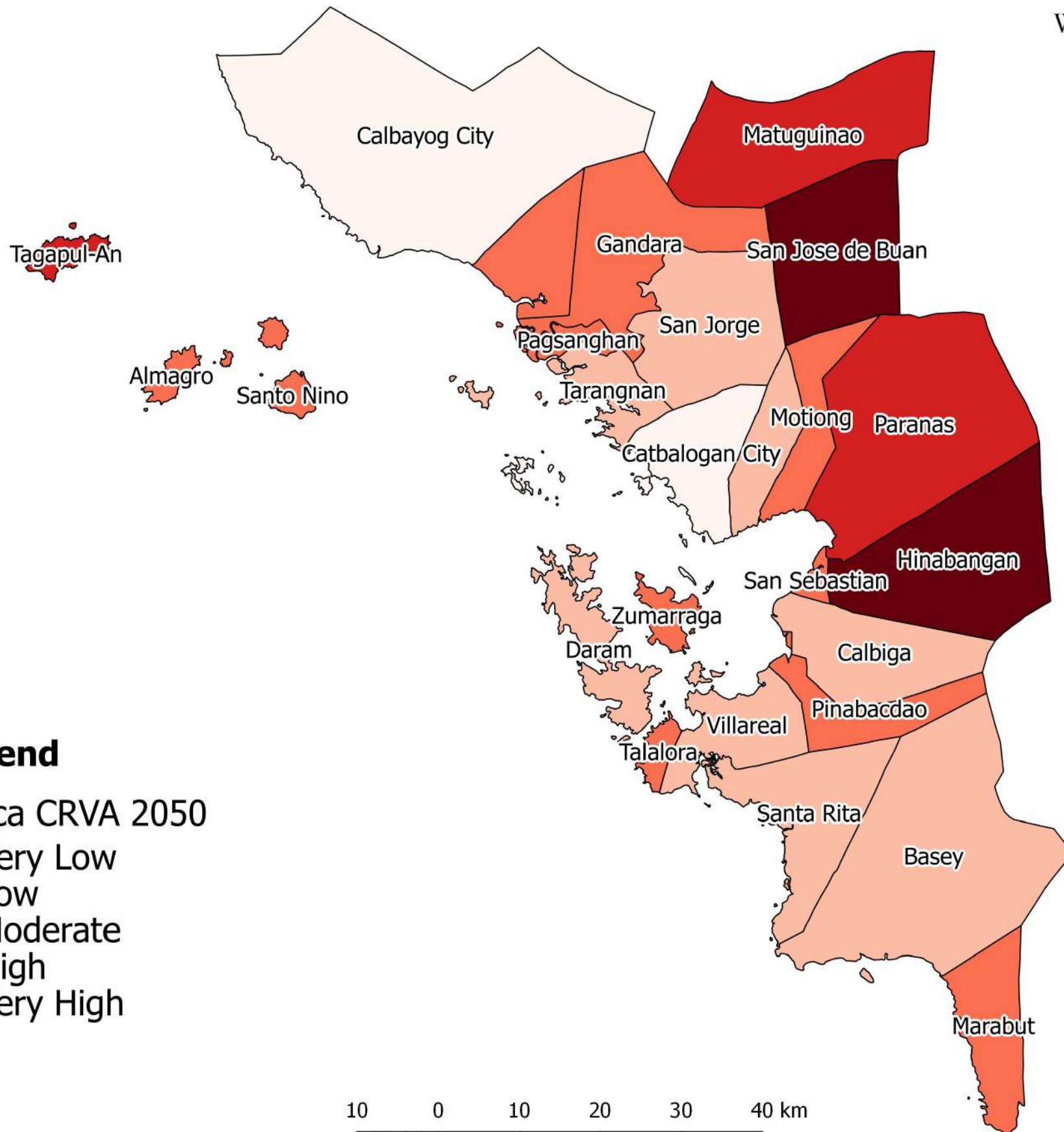


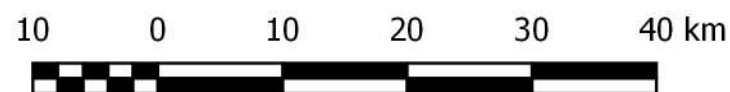
# ABACA CRVA IN SAMAR PROVINCE FOR THE YEAR 2050



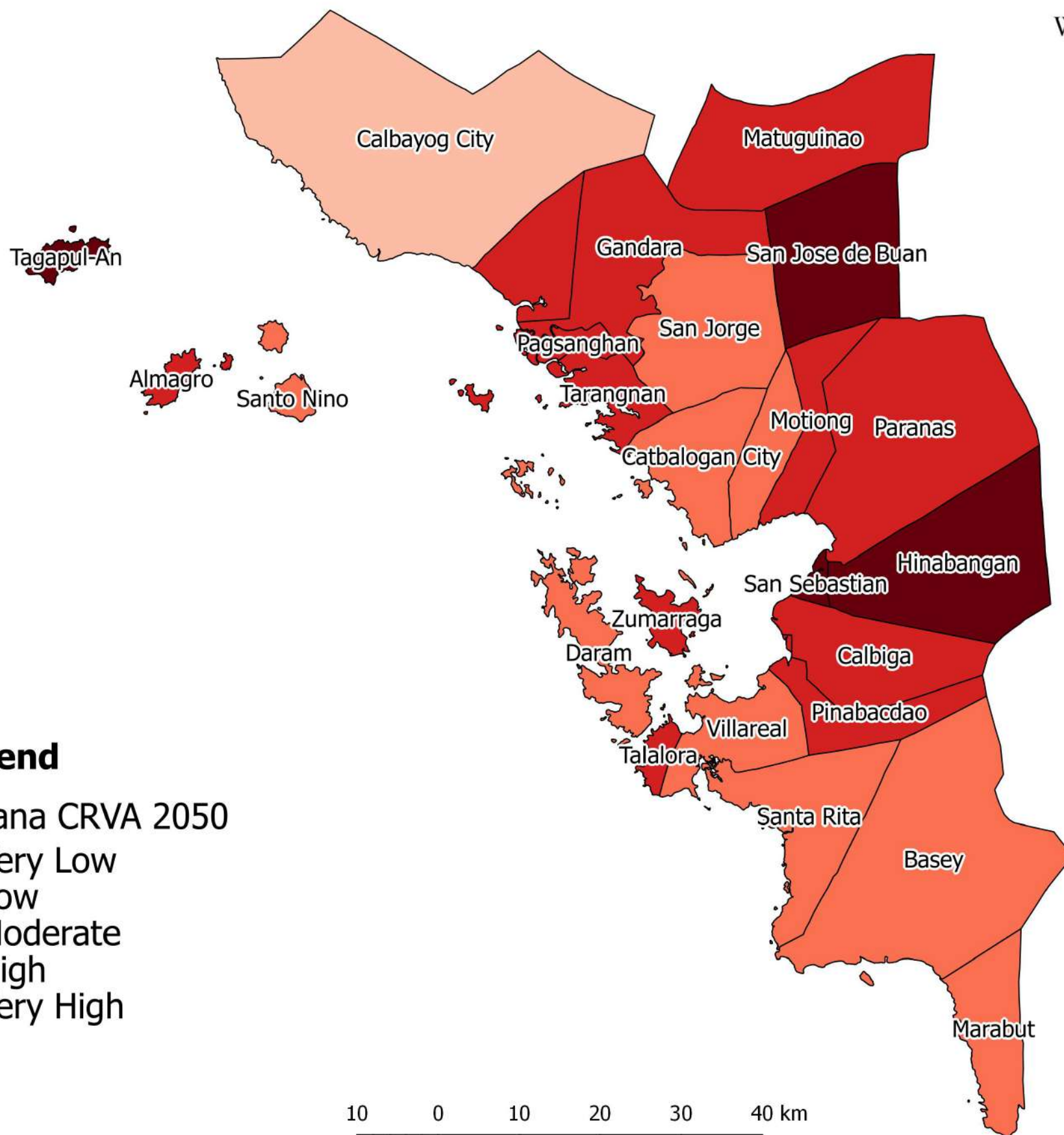
## Legend

Abaca CRVA 2050

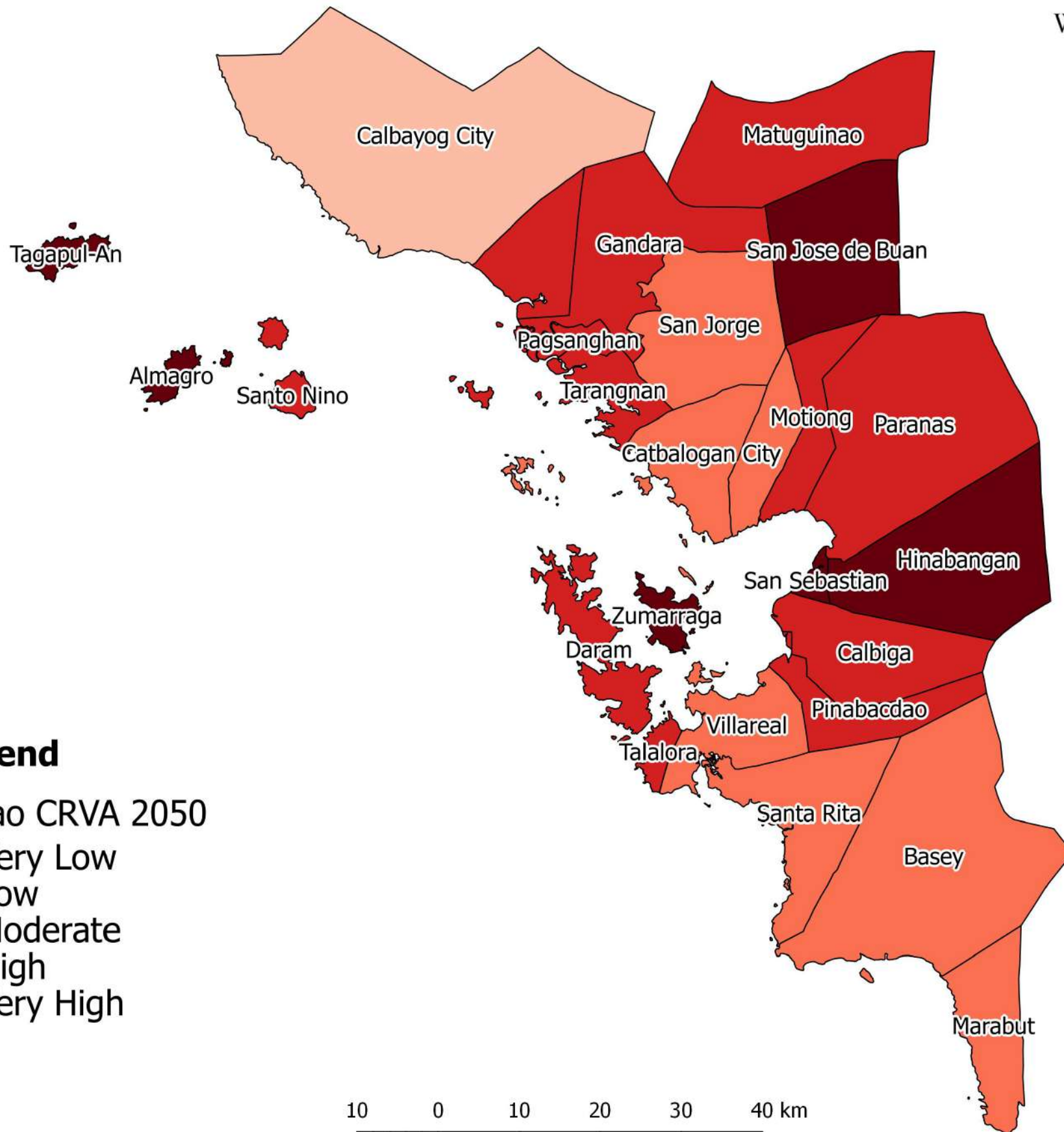
- Very Low
- Low
- Moderate
- High
- Very High



# BANANA CRVA IN SAMAR PROVINCE FOR THE YEAR 2050



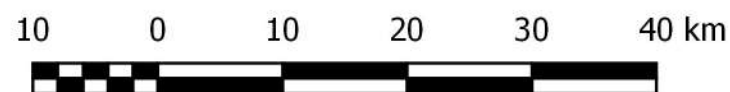
# CACAO CRVA IN SAMAR PROVINCE FOR THE YEAR 2050



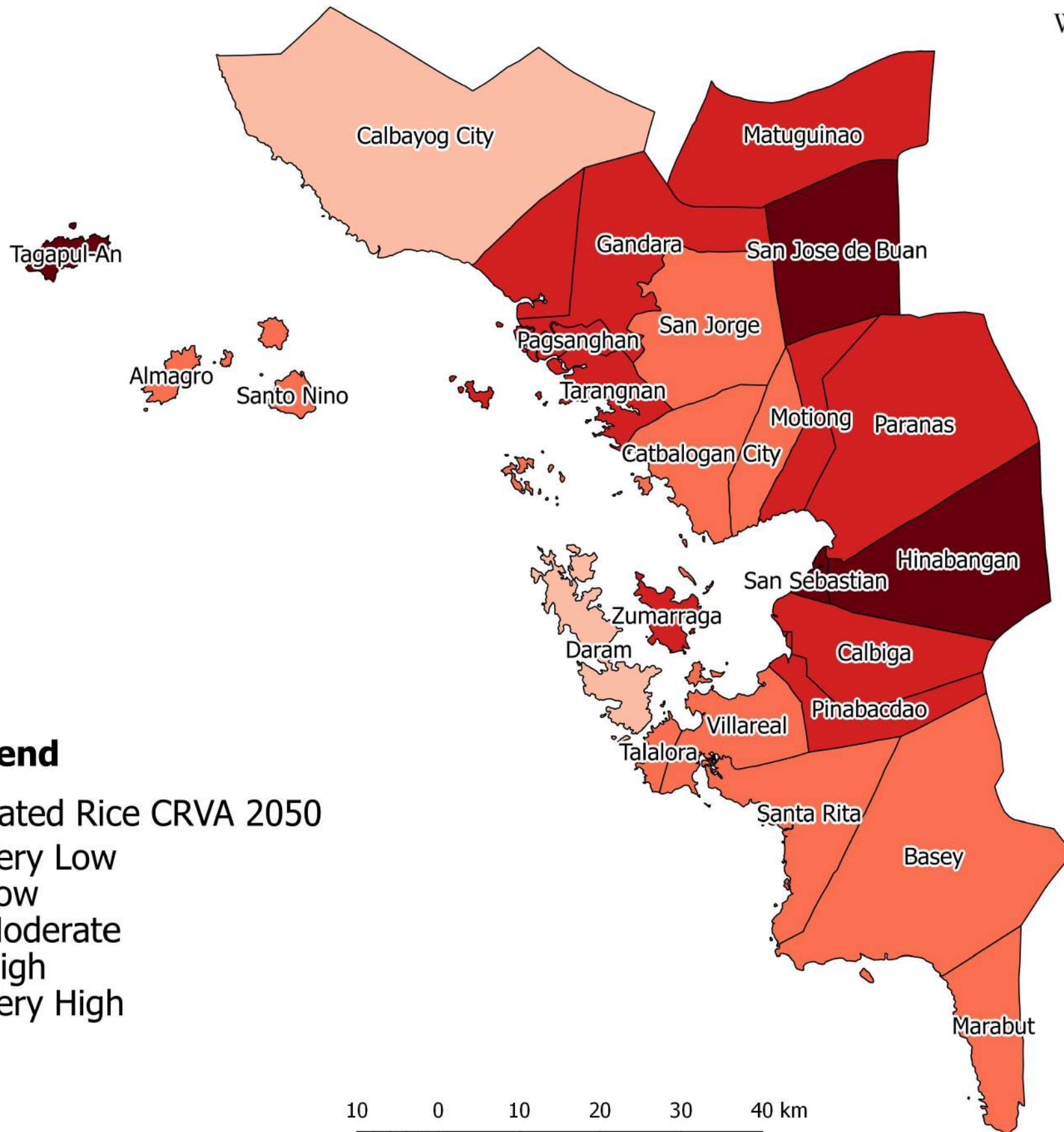
## Legend

Cacao CRVA 2050

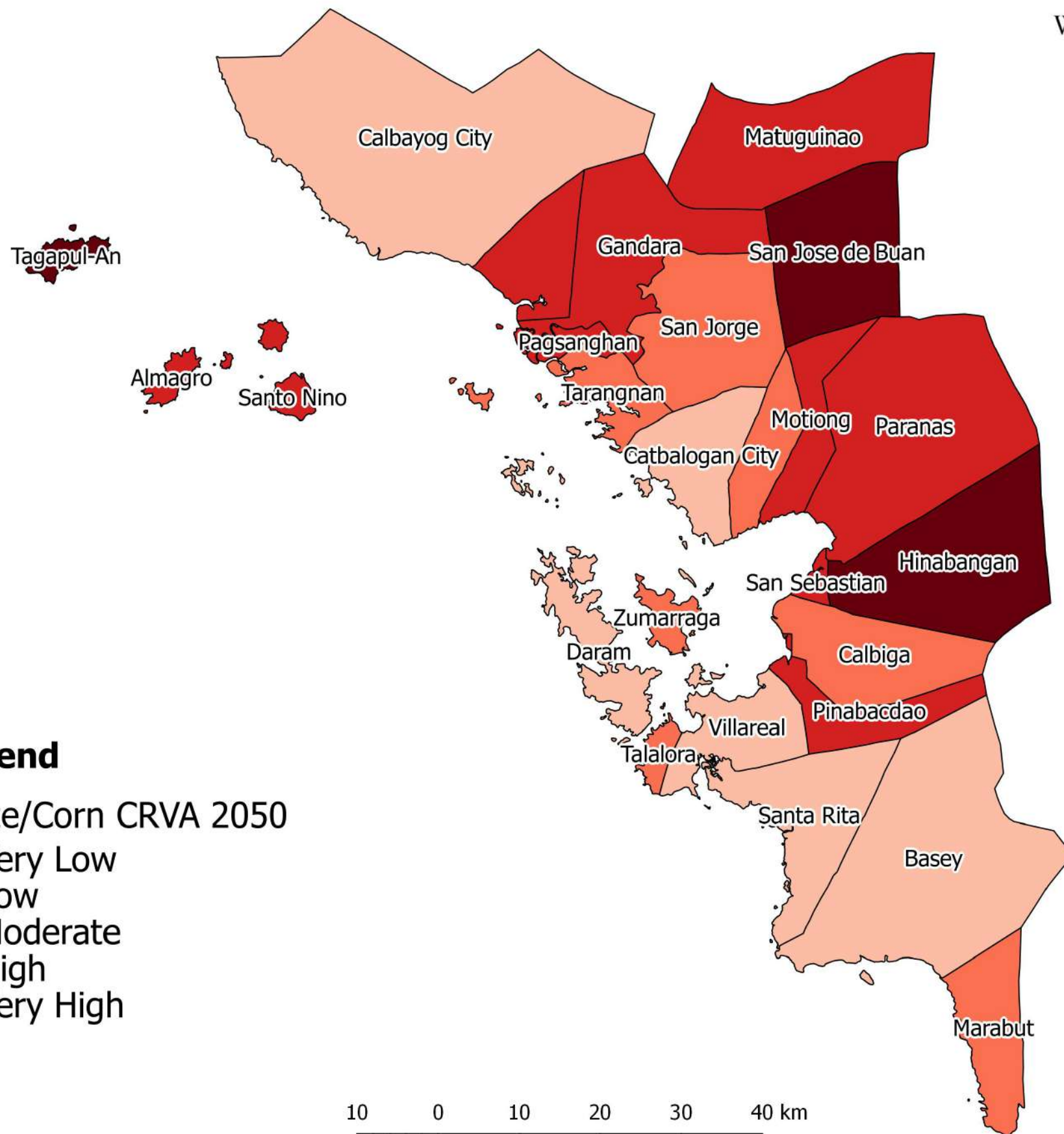
- Very Low
- Low
- Moderate
- High
- Very High



# IRRIGATED RICE CRVA IN SAMAR PROVINCE FOR THE YEAR 2050

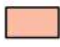




# MAIZE/CORN CRVA IN SAMAR PROVINCE FOR THE YEAR 2050



## Legend

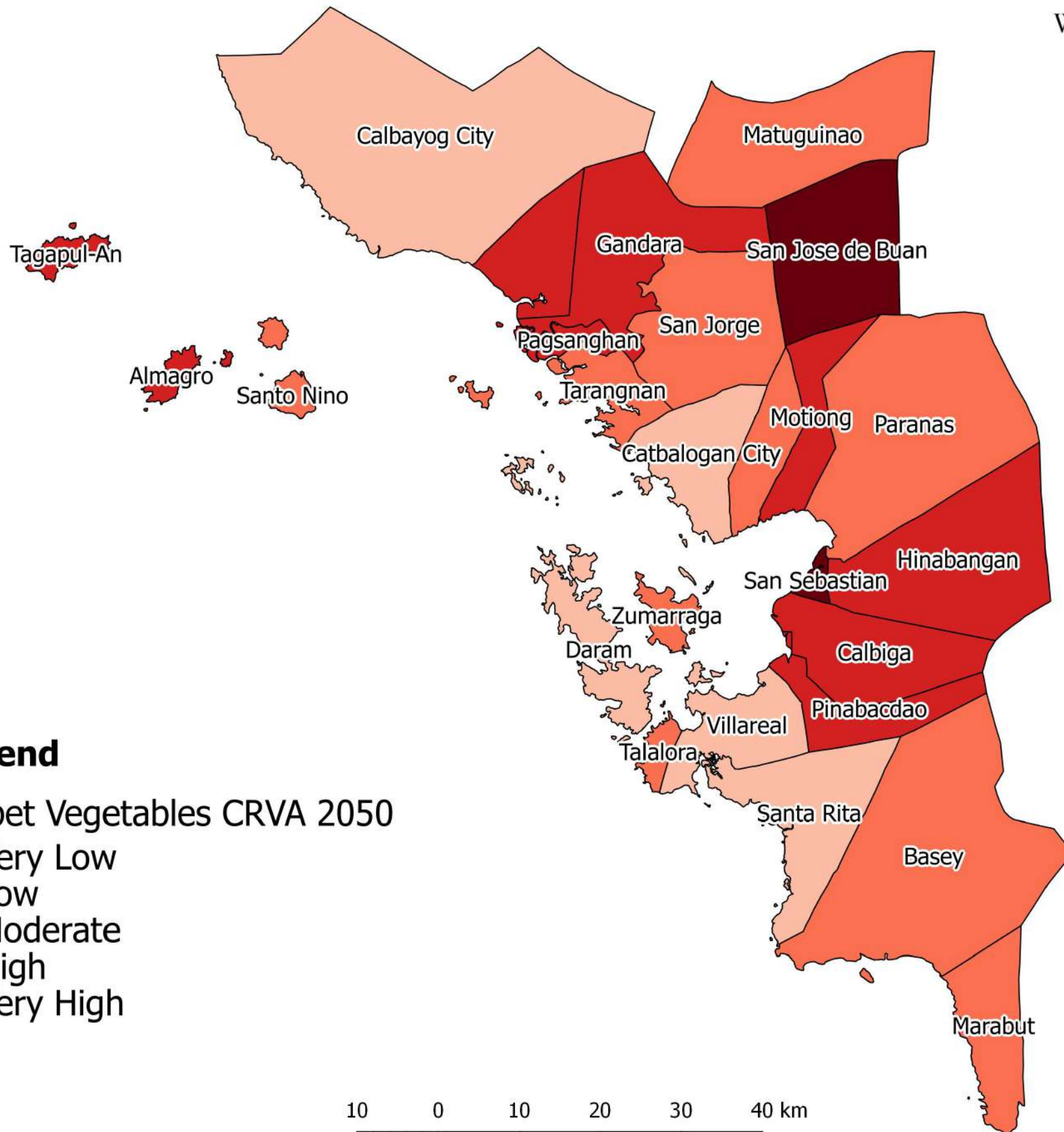
Maize/Corn CRVA 2050

-  Very Low
-  Low
-  Moderate
-  High
-  Very High

10 0 10 20 30 40 km



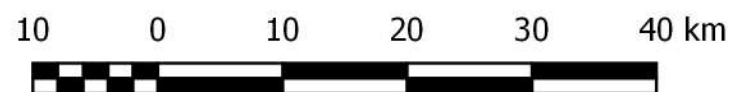
# PAKBET VEGETABLES CRVA IN SAMAR PROVINCE FOR THE YEAR 2050



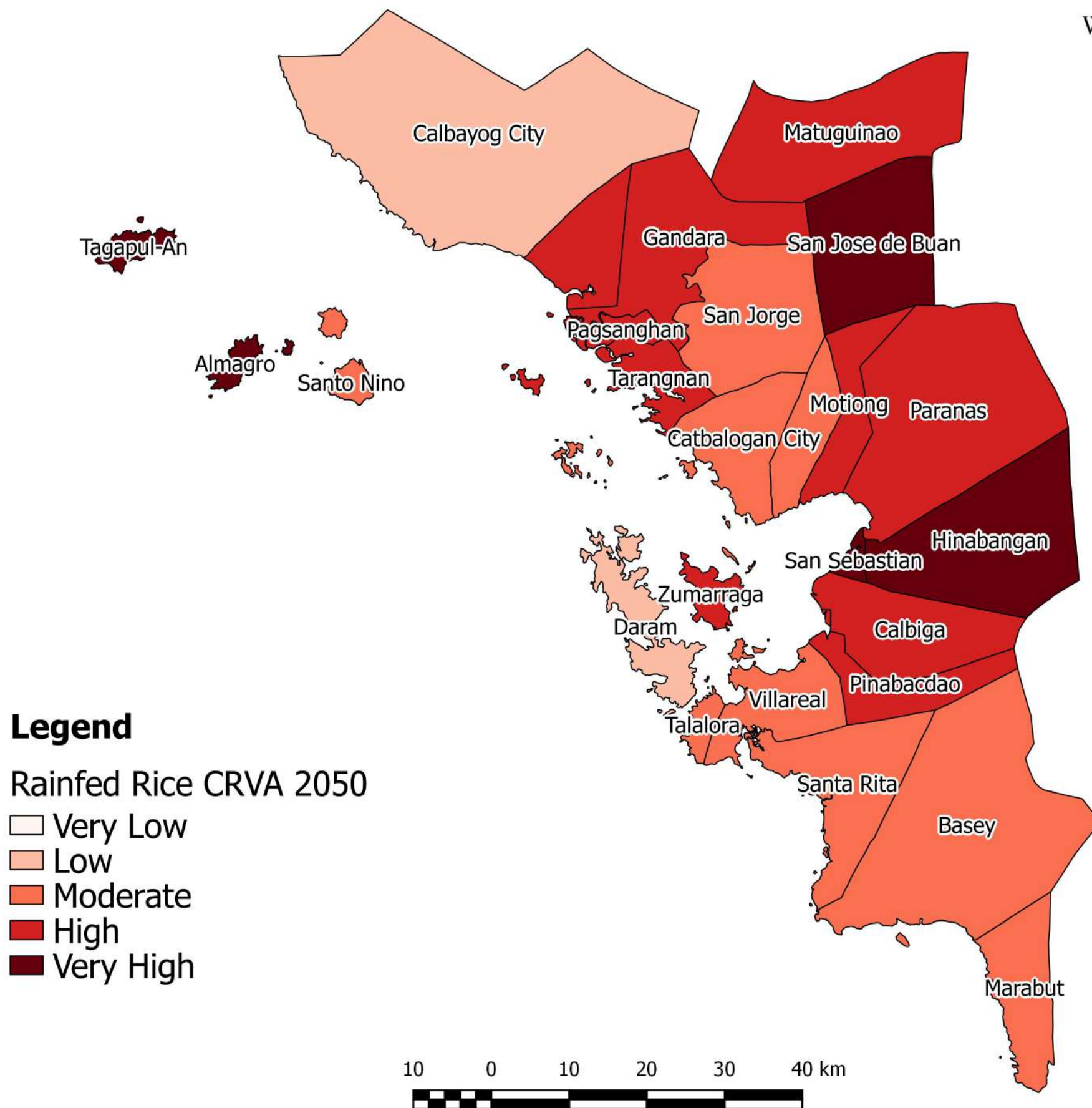
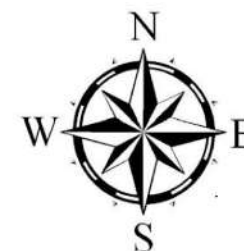
## Legend

Pakbet Vegetables CRVA 2050

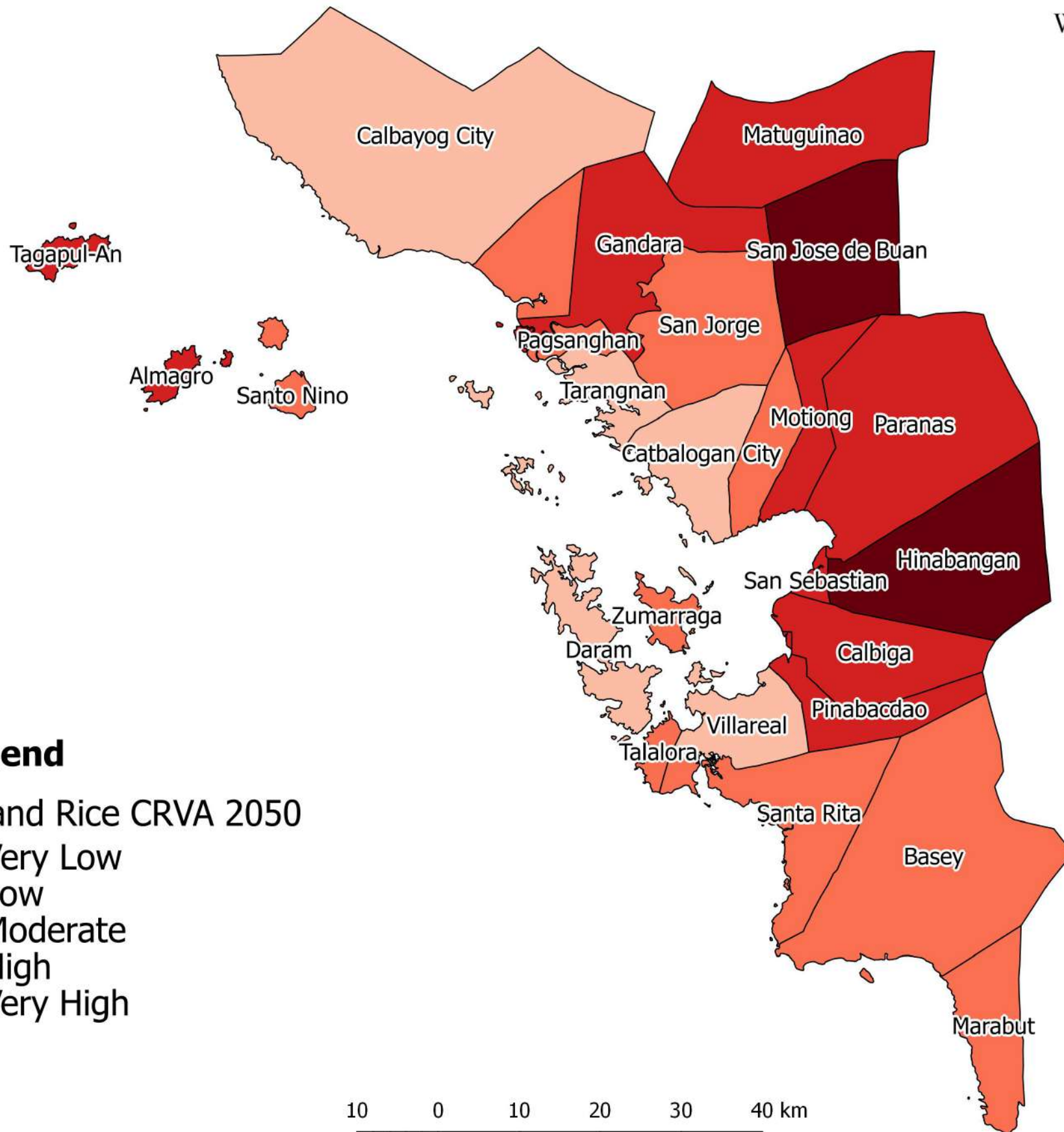
- Very Low
- Low
- Moderate
- High
- Very High



# RAINFED RICE CRVA IN SAMAR PROVINCE FOR THE YEAR 2050



# UPLAND RICE CRVA IN SAMAR PROVINCE FOR THE YEAR 2050



## Legend

Upland Rice CRVA 2050

- Very Low
- Low
- Moderate
- High
- Very High

