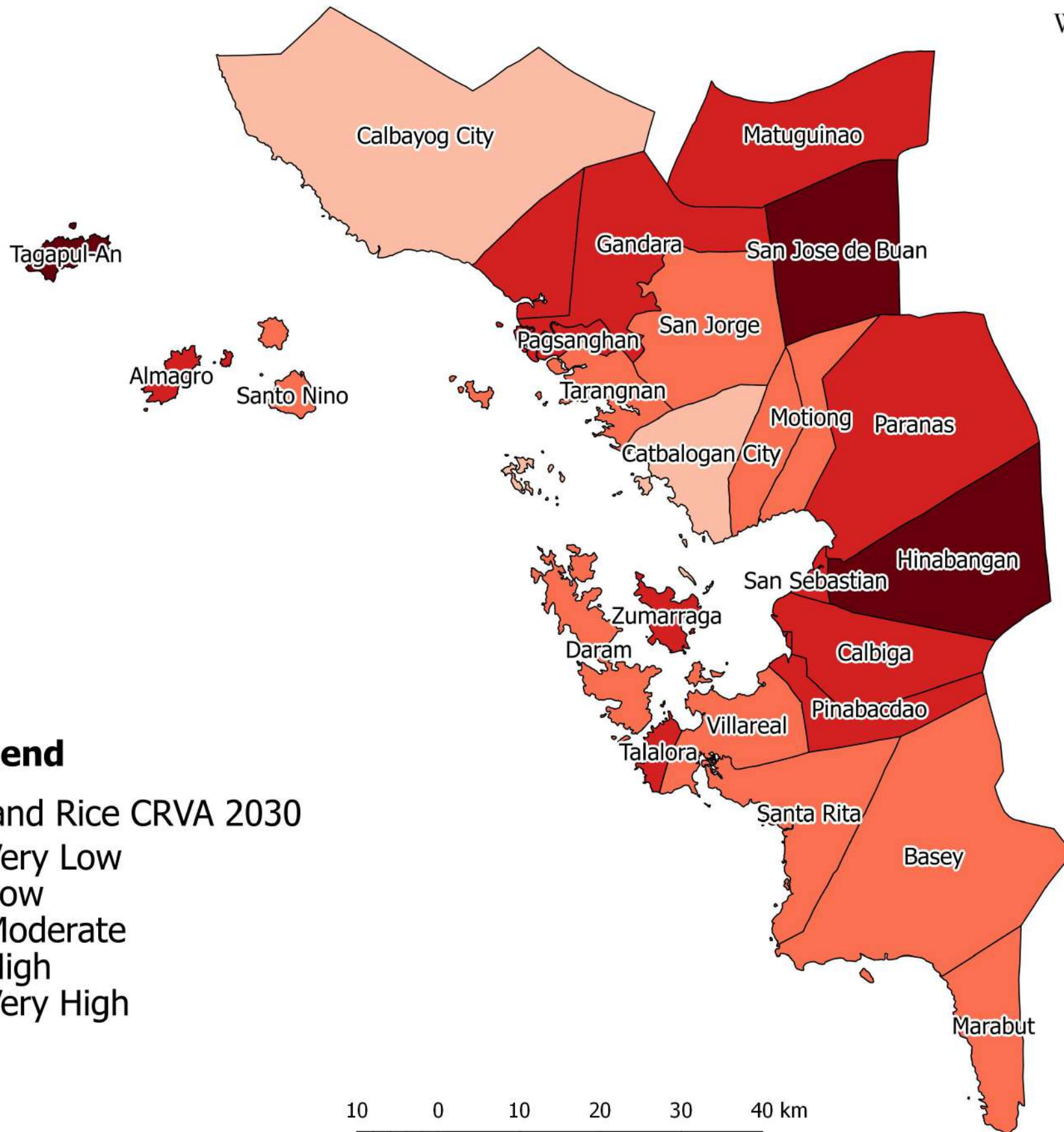

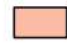
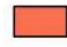




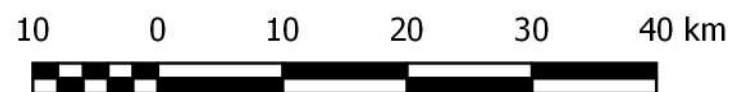
UPLAND RICE CRVA IN SAMAR PROVINCE FOR THE YEAR 2030



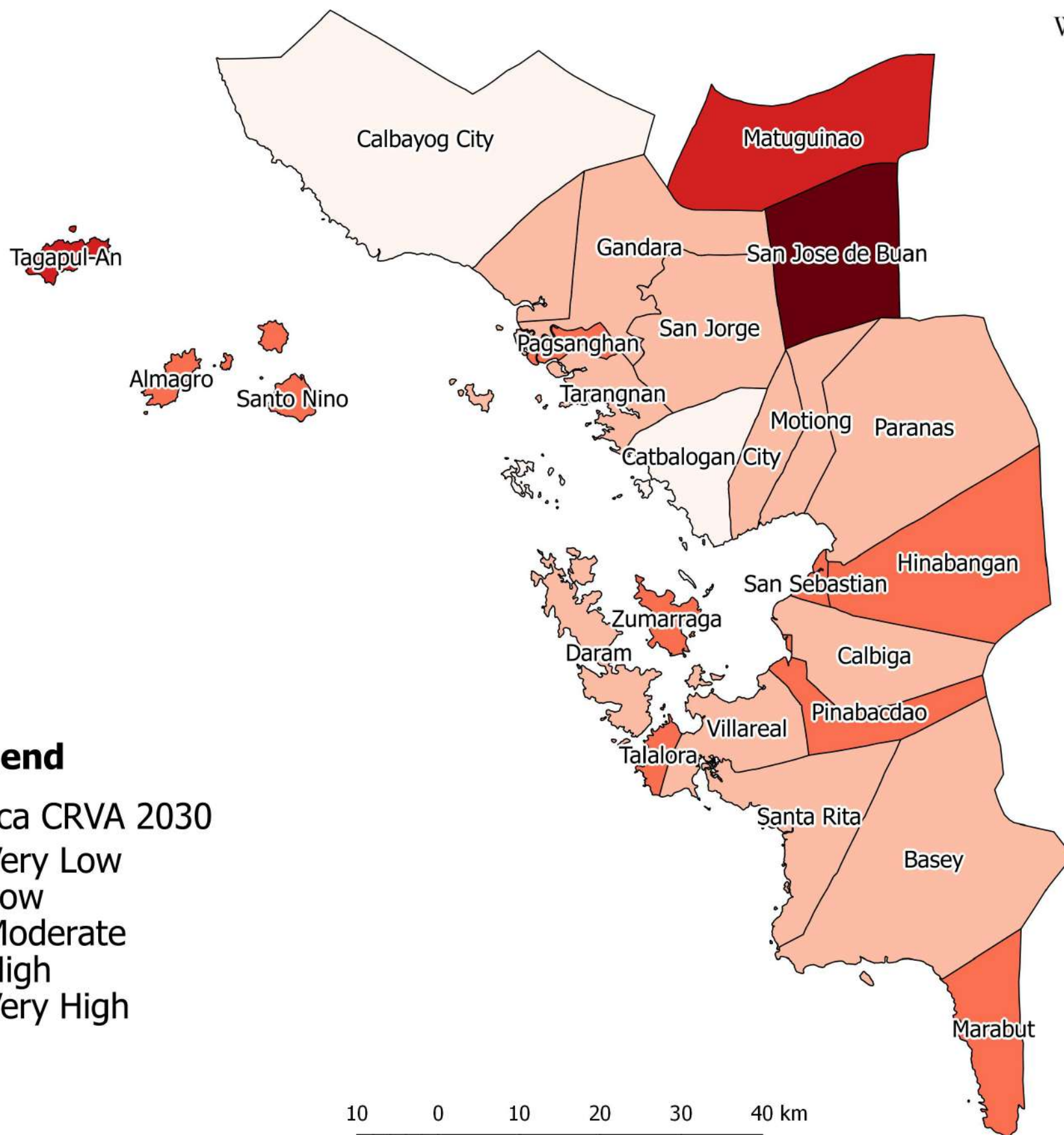
Legend

Upland Rice CRVA 2030

-  Very Low
-  Low
-  Moderate
-  High
-  Very High



ABACA CRVA IN SAMAR PROVINCE FOR THE YEAR 2030



Legend

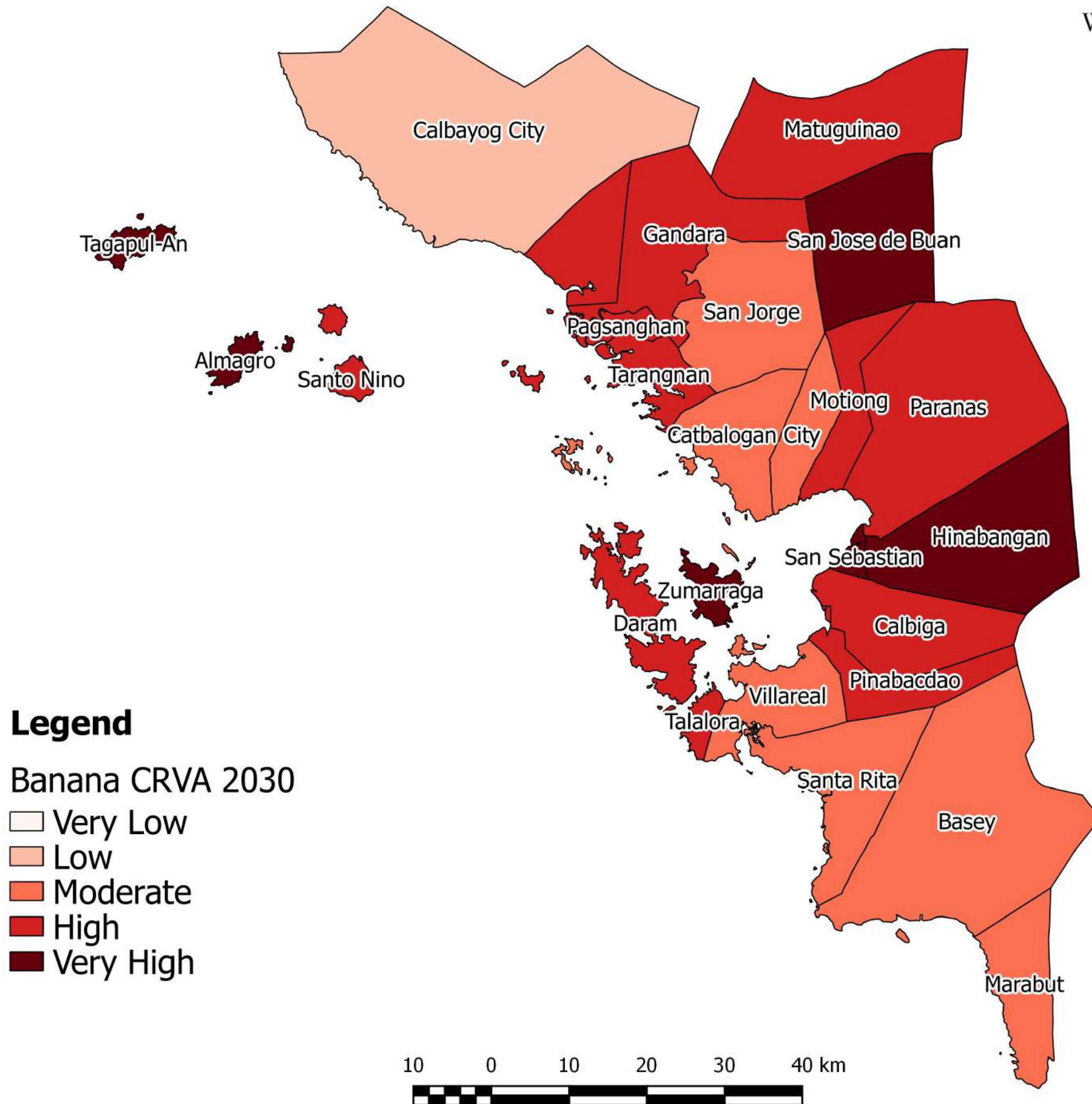
Abaca CRVA 2030

- Very Low
- Low
- Moderate
- High
- Very High

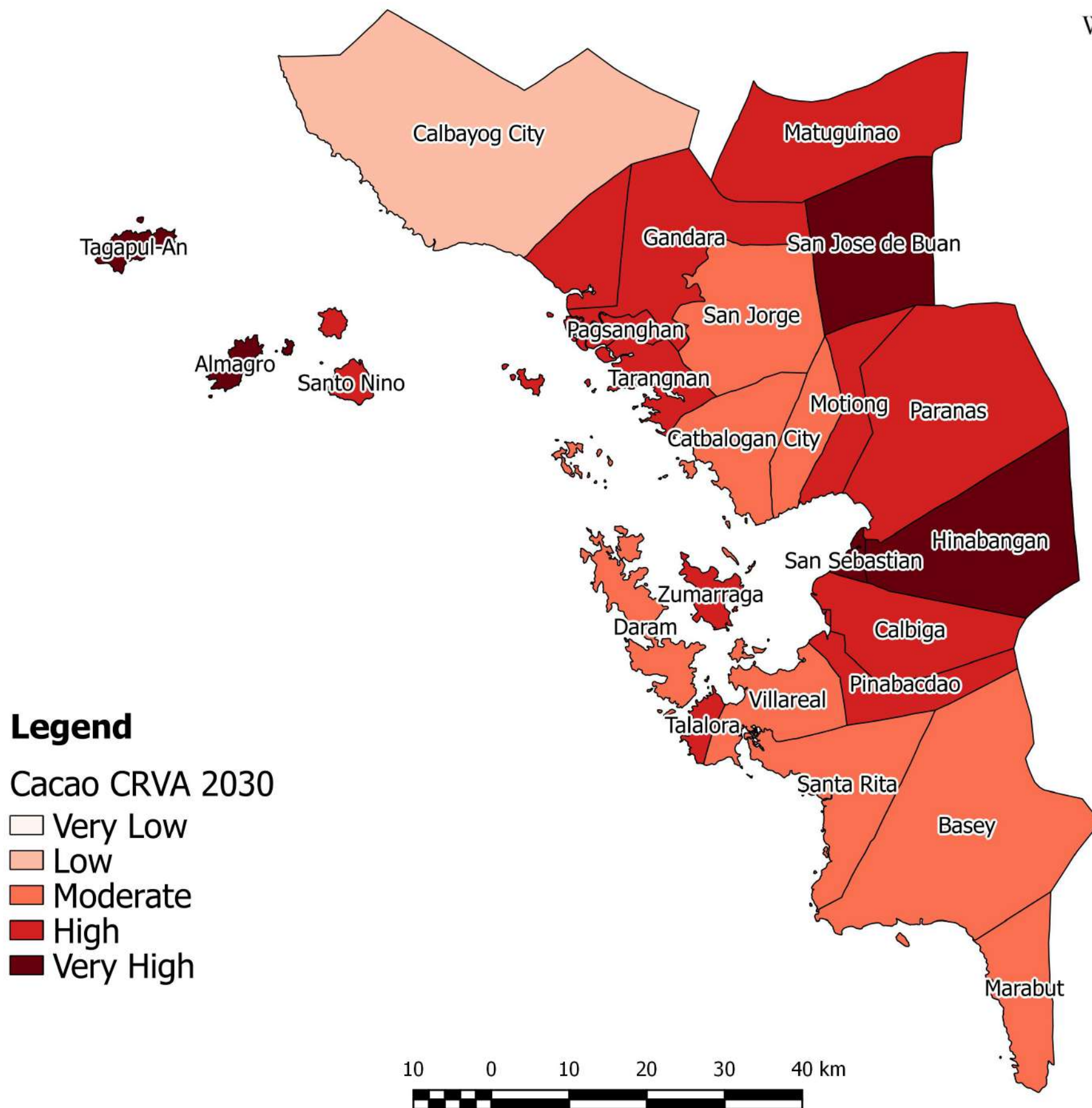
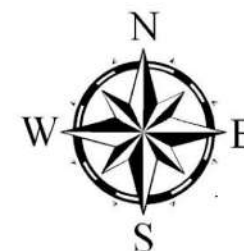
10 0 10 20 30 40 km



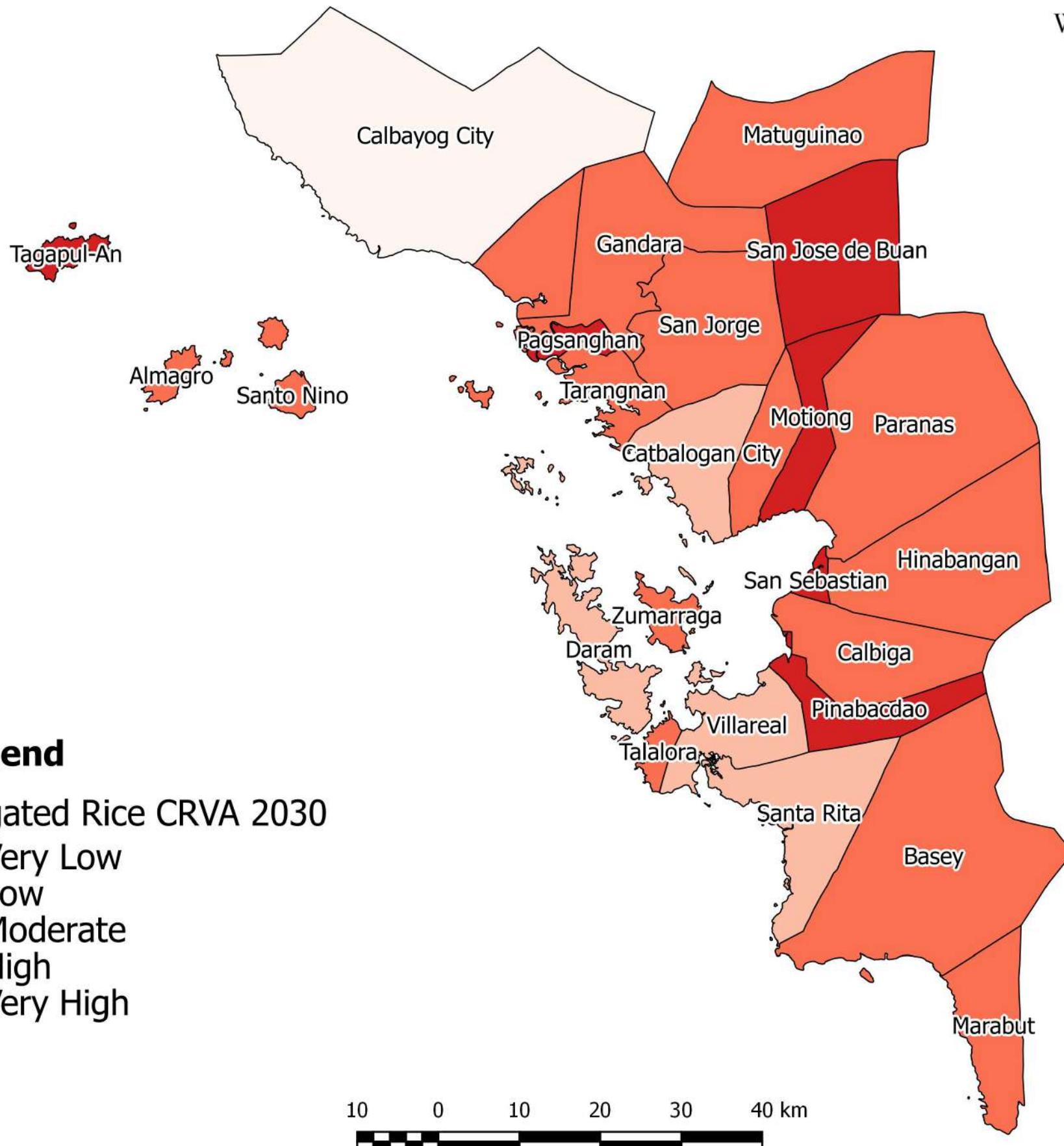
BANANA CRVA IN SAMAR PROVINCE FOR THE YEAR 2030



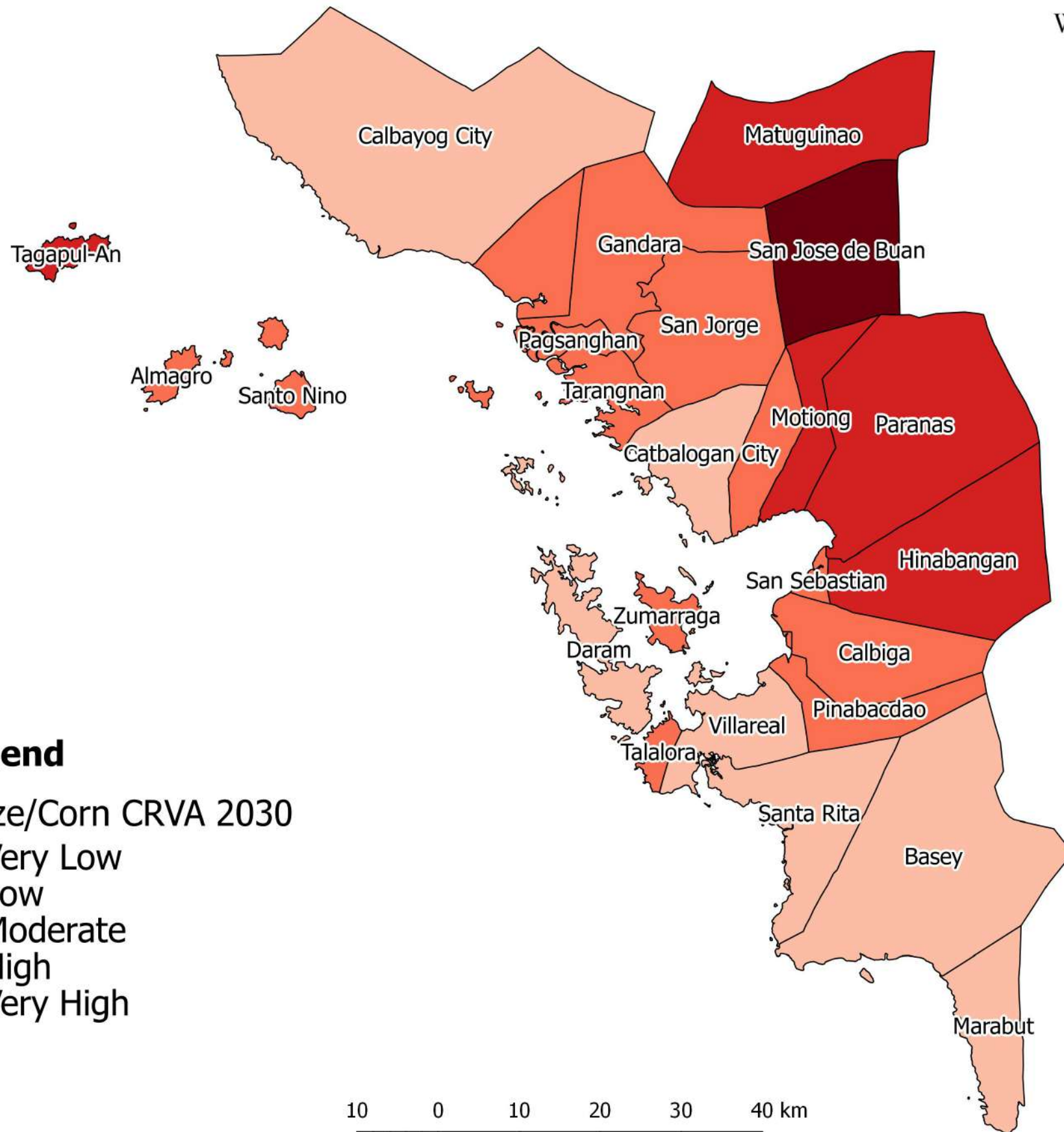
CACAO CRVA IN SAMAR PROVINCE FOR THE YEAR 2030



IRRIGATED RICE CRVA IN SAMAR PROVINCE FOR THE YEAR 2030








MAIZE/CORN CRVA IN SAMAR PROVINCE FOR THE YEAR 2030



Legend

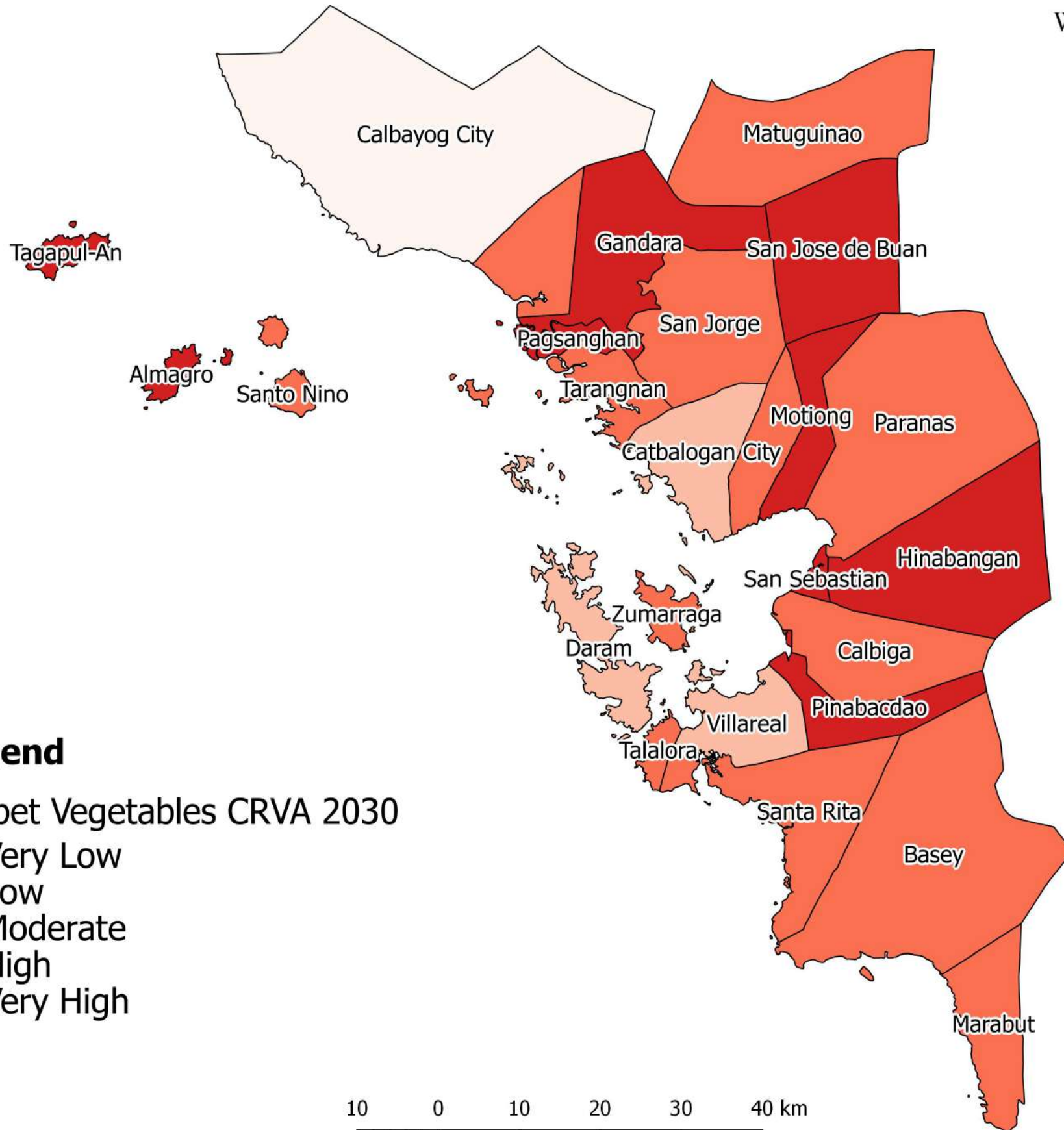
Maize/Corn CRVA 2030

-  Very Low
-  Low
-  Moderate
-  High
-  Very High

10 0 10 20 30 40 km



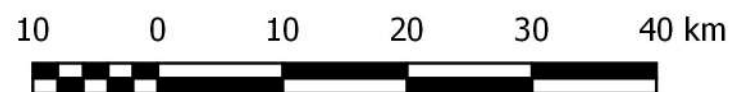
PAKBET VEGETABLES CRVA IN SAMAR PROVINCE FOR THE YEAR 2030



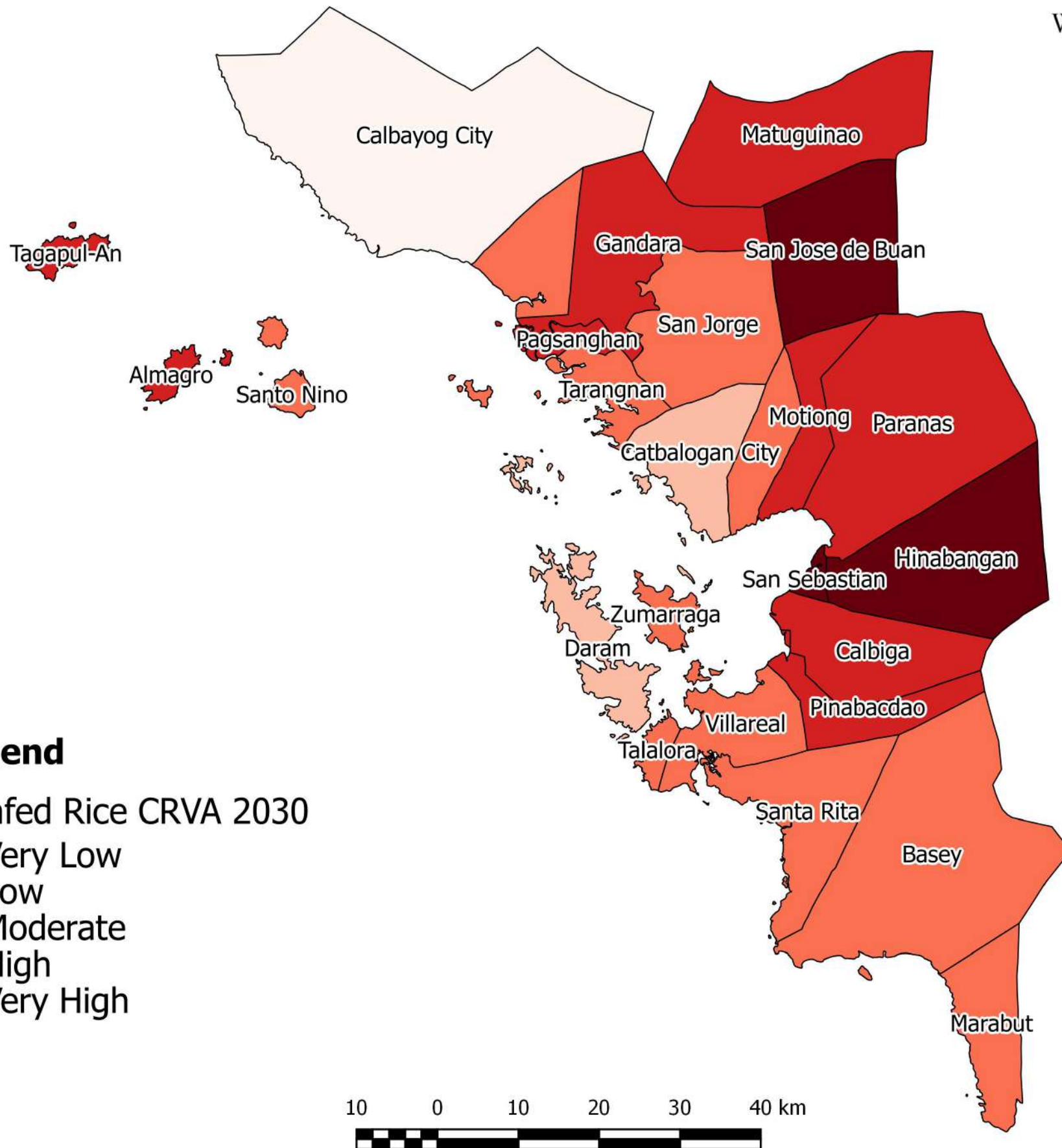
Legend

Pakbet Vegetables CRVA 2030

- Very Low
- Low
- Moderate
- High
- Very High



RAINFED RICE CRVA IN SAMAR PROVINCE FOR THE YEAR 2030



Legend

Rainfed Rice CRVA 2030

- Very Low
- Low
- Moderate
- High
- Very High