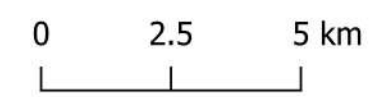








CRS: EPSG: 4326
(WGS 84)



Vulnerability Classes

15-15-70

Vulnerability of Banana Yr 2050

-  0.00-0.20 (Very Low)
-  0.20-0.40 (Low)
-  0.40-0.60 (Moderate)
-  0.60-0.80 (High)
-  0.80-1.00 (Very High)

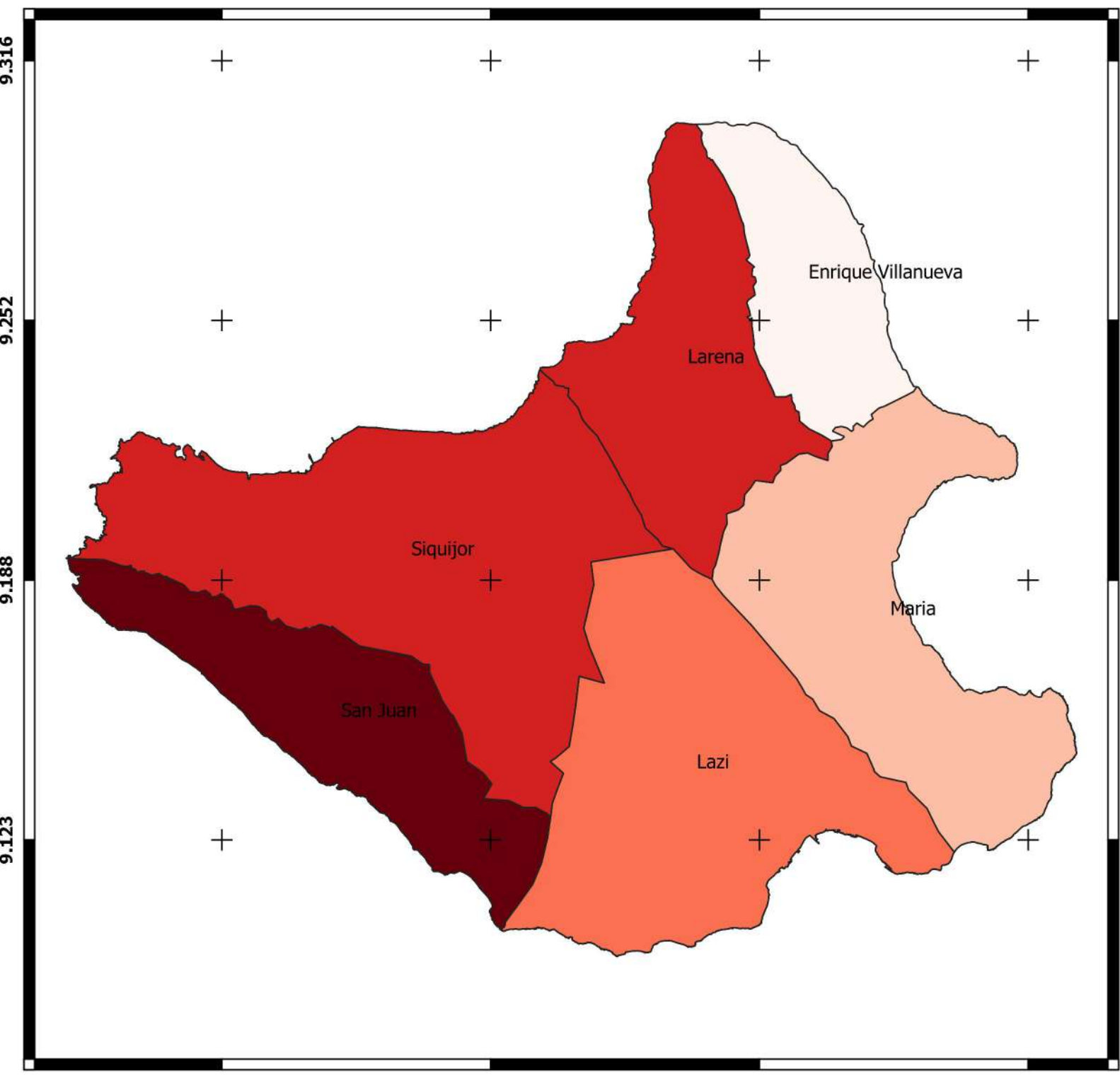


Research Project in Collaboration with:



Mapped by: ABLoreto and DPLoreto (March 2020)

Data Collection Facilitated by: MNVSeño, DMBañoc, ABLoreto, JPGa, JSToledo & JACavero



123.491

123.557

123.624

123.690

9.316

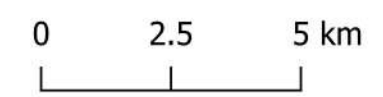
9.252

9.188

9.123



CRS: EPSG: 4326
(WGS 84)



Vulnerability Classes

15-15-70

Vulnerability of Cassava Yr 2050

- 0.00-0.20 (Very Low)
- 0.20-0.40 (Low)
- 0.40-0.60 (Moderate)
- 0.60-0.80 (High)
- 0.80-1.00 (Very High)

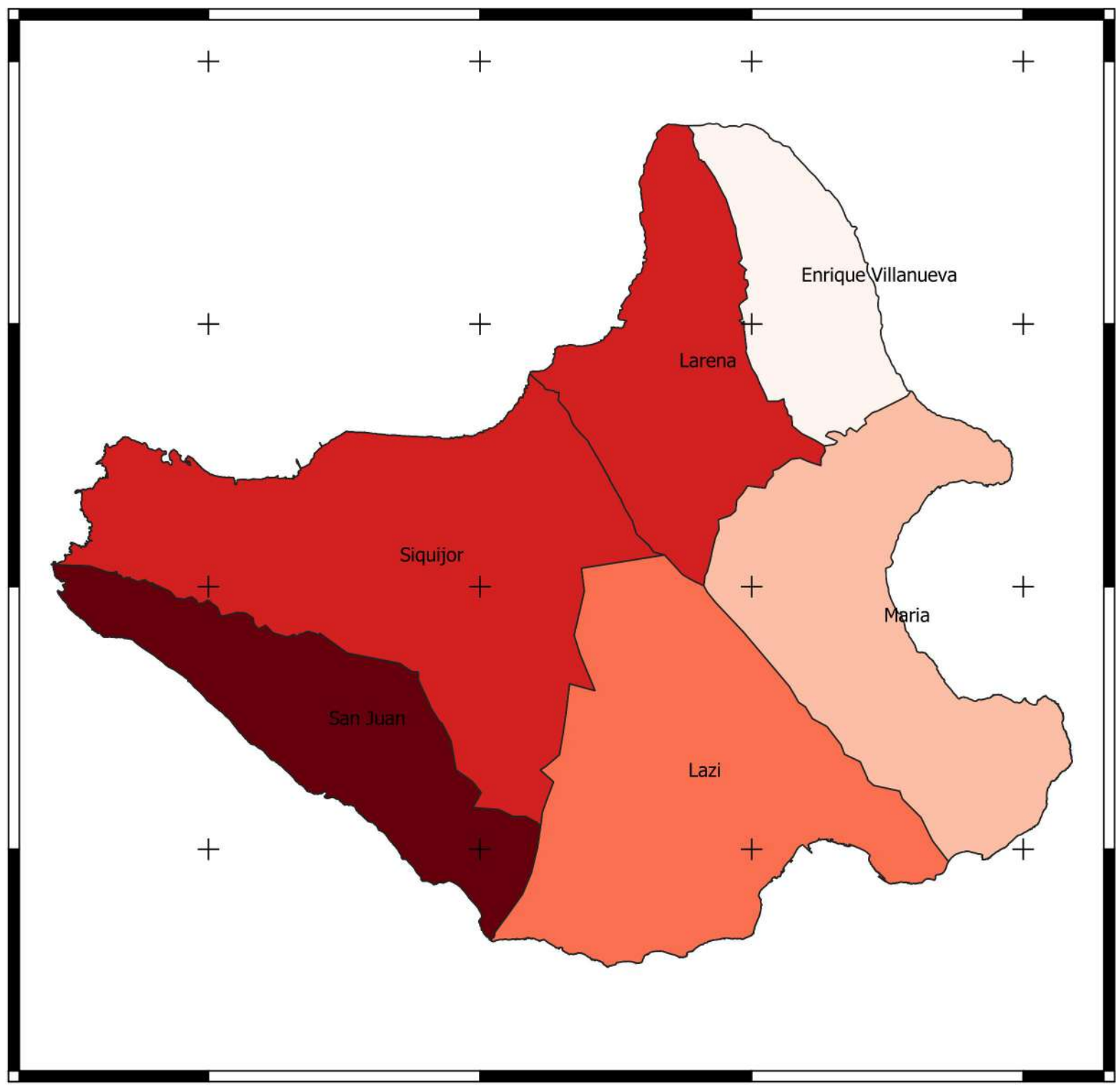


Research Project in Collaboration with:



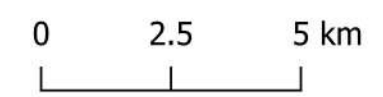
Mapped by: ABLoreto and DPLoreto (March 2020)

Data Collection Facilitated by: MNVSeño, DMBañoc, ABLoreto, JPGa, JSToledo & JACavero





CRS: EPSG: 4326
(WGS 84)



Vulnerability Classes

15-15-70

Vulnerability of Corn Yr 2050

- 0.00-0.20 (Very Low)
- 0.20-0.40 (Low)
- 0.40-0.60 (Moderate)
- 0.60-0.80 (High)
- 0.80-1.00 (Very High)

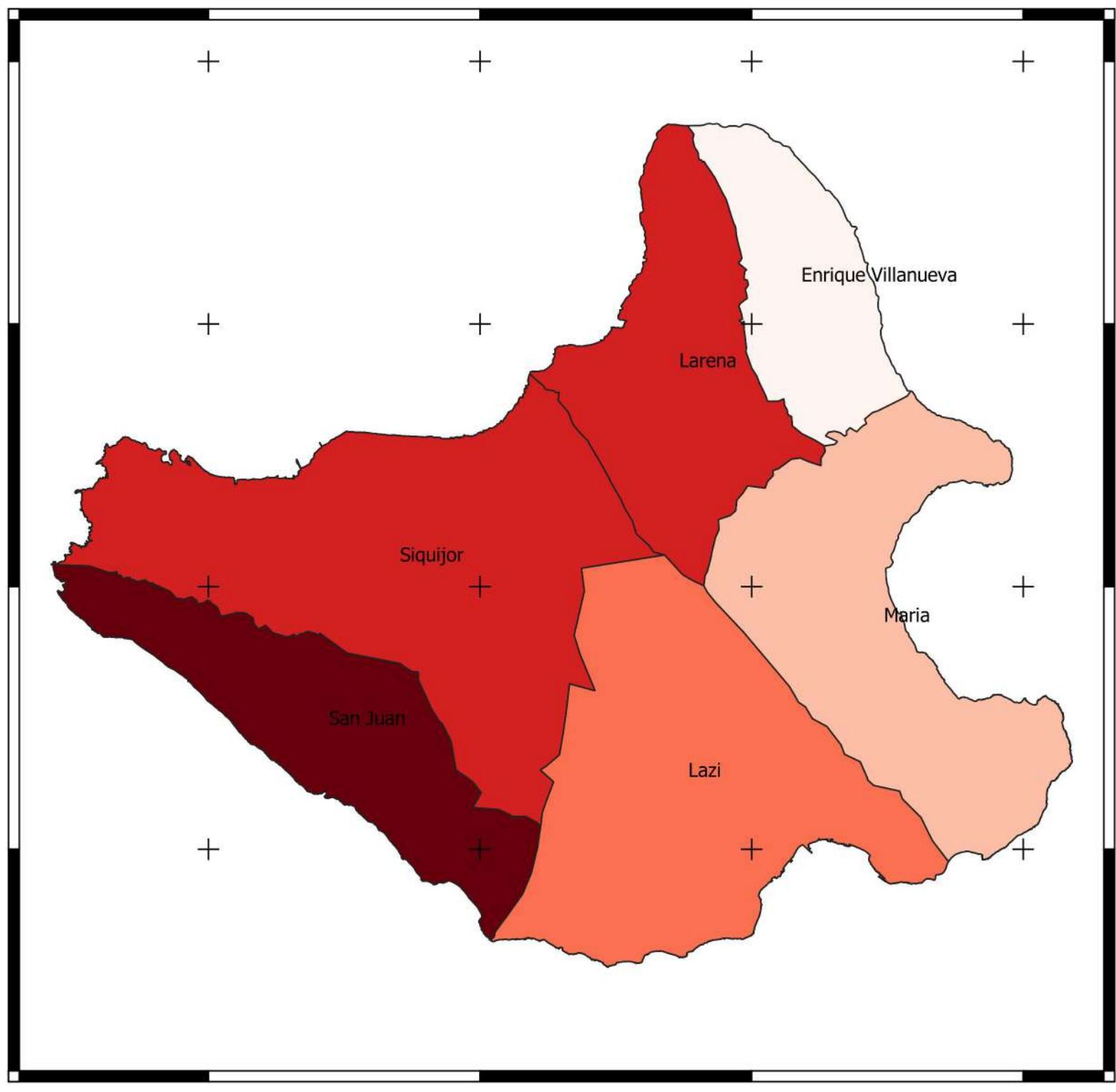


Research Project in Collaboration with:



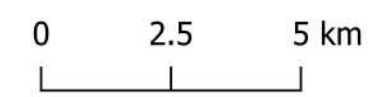
Mapped by: ABLoreto and DPLoreto (March 2020)

Data Collection Facilitated by: MNVSeño, DMBañoc, ABLoreto, JPGa, JSToledo & JACavero










CRS: EPSG: 4326
(WGS 84)



Vulnerability Classes

15-15-70

Vulnerability of Corn Yr 2050

-  0.00-0.20 (Very Low)
-  0.20-0.40 (Low)
-  0.40-0.60 (Moderate)
-  0.60-0.80 (High)
-  0.80-1.00 (Very High)



Research Project in Collaboration with:



Corn Areas

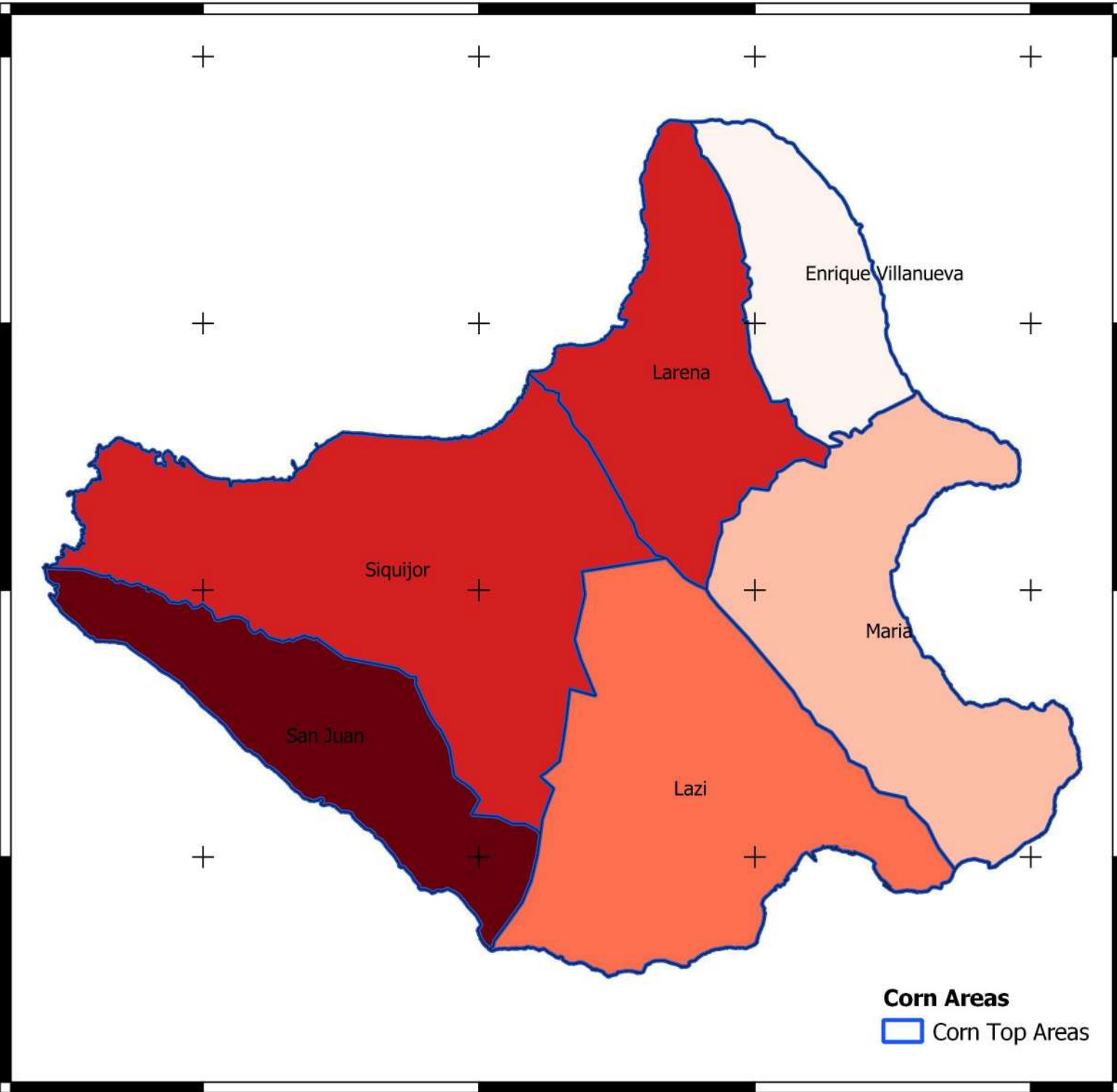
 Corn Top Areas

Mapped by: ABLoreto and DPLoreto (March 2020)

Data Collection Facilitated by: MNVSeño, DMBañoc, ABLoreto, JPGa, JSToledo & JACavero

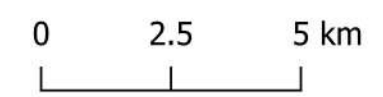
9.316
9.252
9.188
9.123

123.491 123.557 123.624 123.690






CRS: EPSG: 4326
(WGS 84)

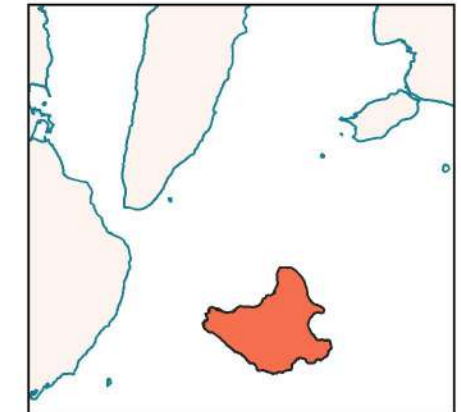


Vulnerability Classes

15-15-70

Vulnerability of Mango Yr 2050

-  0.00-0.20 (Very Low)
-  0.20-0.40 (Low)
-  0.40-0.60 (Moderate)
-  0.60-0.80 (High)
-  0.80-1.00 (Very High)

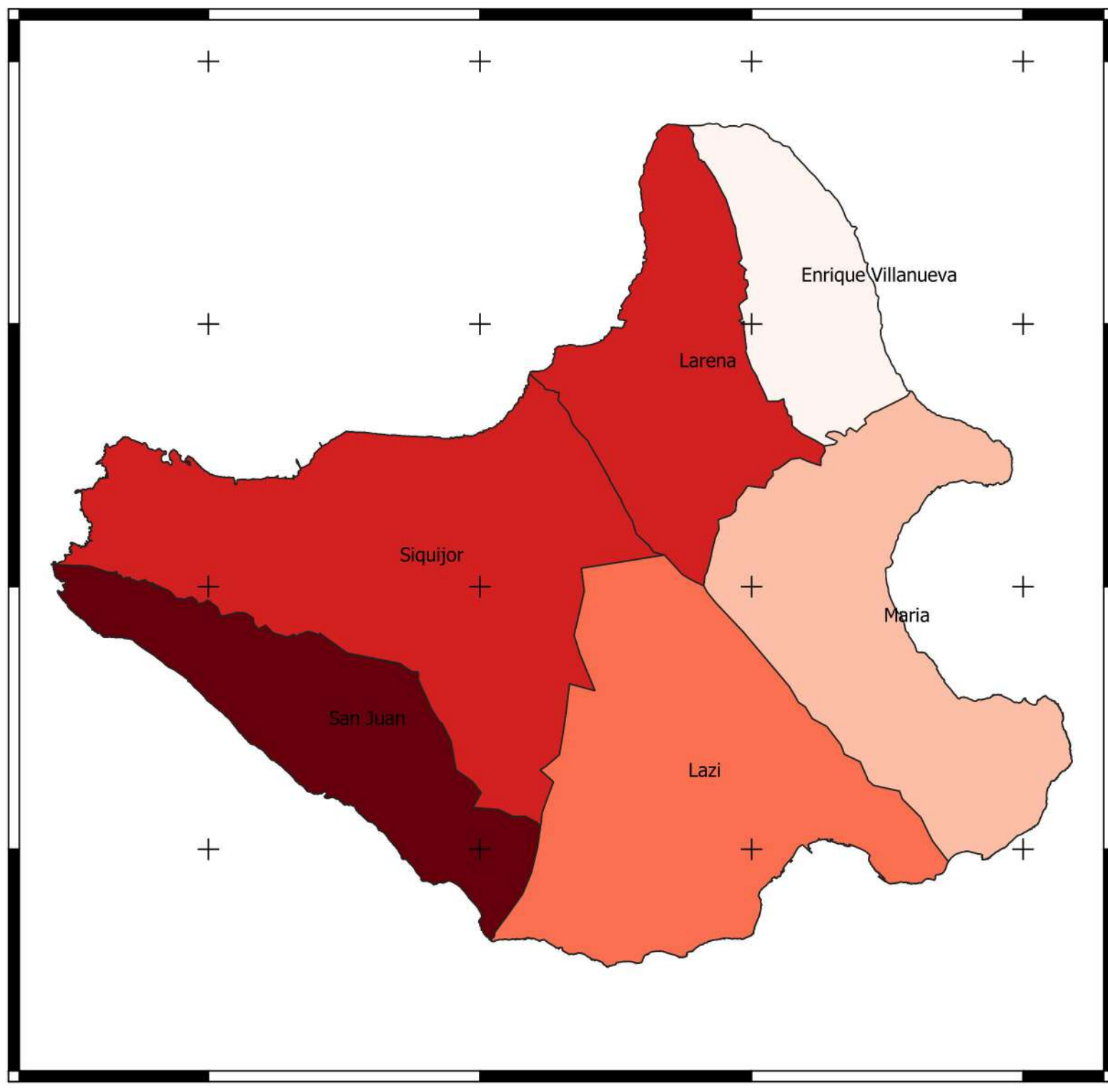


Research Project in Collaboration with:



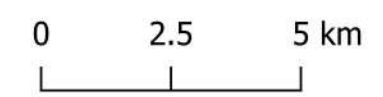
Mapped by: ABLoreto and DPLoreto (March 2020)

Data Collection Facilitated by: MNVSeño, DMBañoc, ABLoreto, JPGa, JSToledo & JACavero






CRS: EPSG: 4326
(WGS 84)

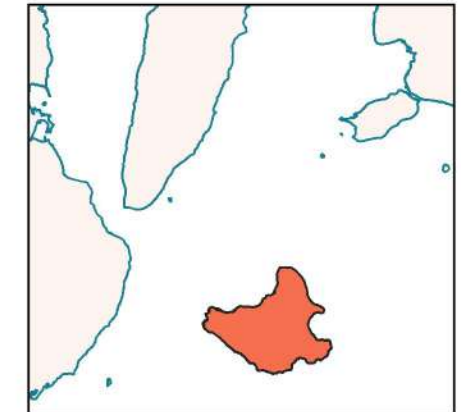


Vulnerability Classes

15-15-70

Vulnerability of Pinakbet Yr 2050

-  0.00-0.20 (Very Low)
-  0.20-0.40 (Low)
-  0.40-0.60 (Moderate)
-  0.60-0.80 (High)
-  0.80-1.00 (Very High)

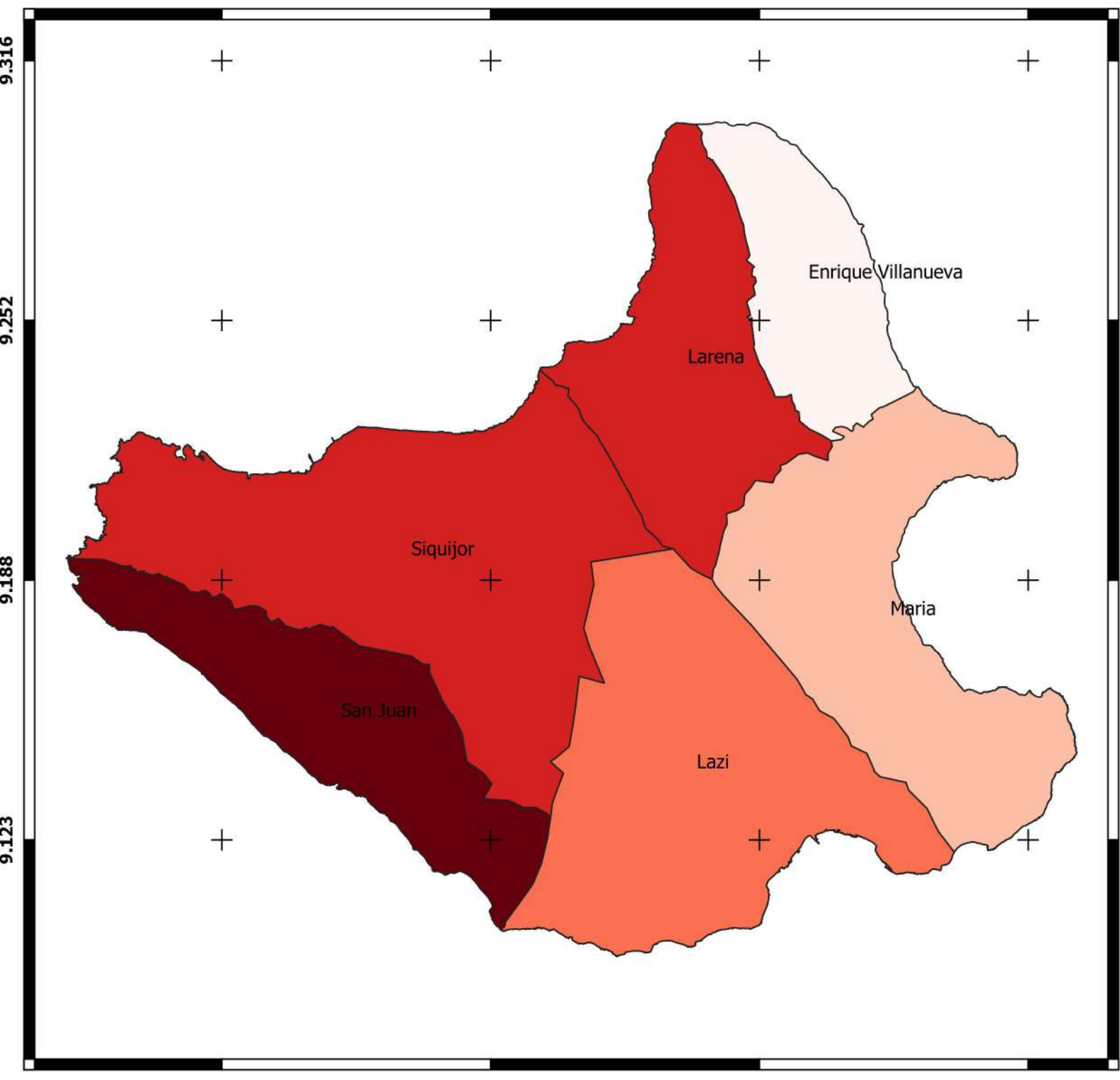


Research Project in Collaboration with:



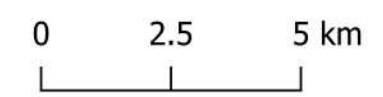
Mapped by: ABLoreto and DPLoreto (March 2020)

Data Collection Facilitated by: MNVSeño, DMBañoc, ABLoreto, JPGa, JSToledo & JACavero





CRS: EPSG: 4326
(WGS 84)

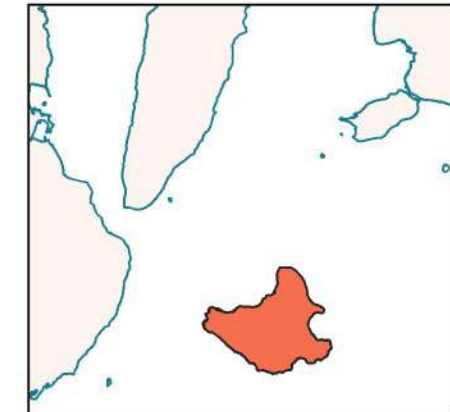


Vulnerability Classes

15-15-70

Vulnerability of Rice Yr 2050

-  0.00-0.20 (Very Low)
-  0.20-0.40 (Low)
-  0.40-0.60 (Moderate)
-  0.60-0.80 (High)
-  0.80-1.00 (Very High)

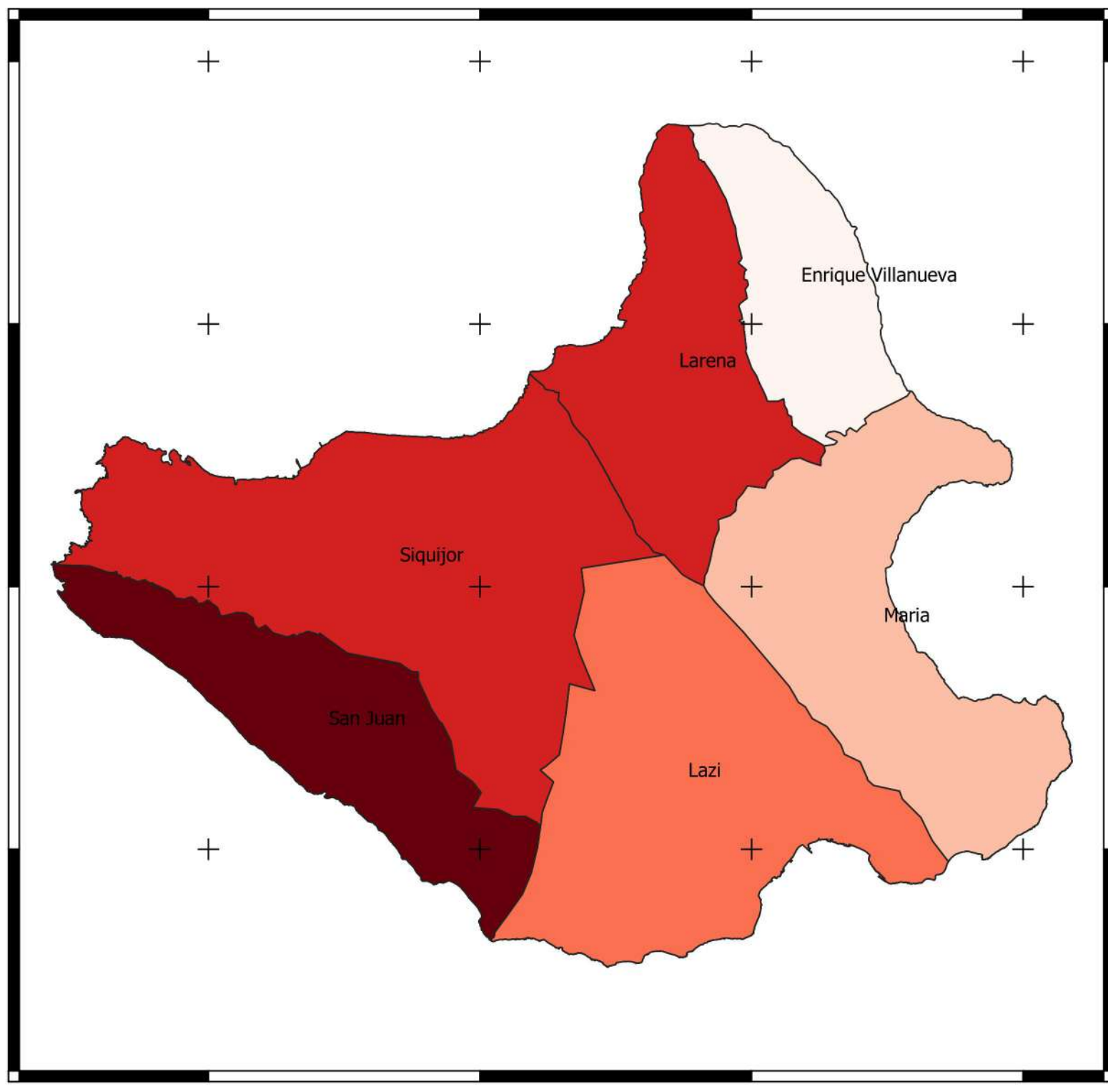


Research Project in Collaboration with:



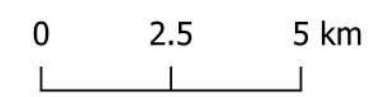
Mapped by: ABLoreto and DPLoreto (March 2020)

Data Collection Facilitated by: MNVSeño, DMBañoc, ABLoreto, JPGa, JSToledo & JACavero







CRS: EPSG: 4326
(WGS 84)



Vulnerability Classes

15-15-70

Vulnerability of Rice Yr 2050

-  0.00-0.20 (Very Low)
-  0.20-0.40 (Low)
-  0.40-0.60 (Moderate)
-  0.60-0.80 (High)
-  0.80-1.00 (Very High)



Research Project in Collaboration with:



Rice Areas

 Rice Top Areas

Mapped by: ABLoreto and DPLoreto (March 2020)

Data Collection Facilitated by: MNVSeño, DMBañoc, ABLoreto, JPGa, JSToledo & JACavero

9.316
9.252
9.188
9.123

123.491 123.557 123.624 123.690

