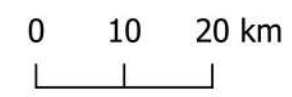


CRS: ESPG: 4326  
(WGS 84)

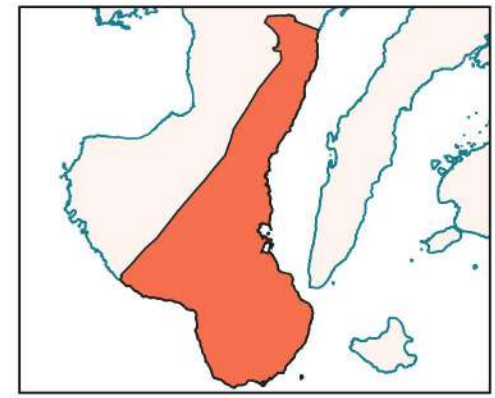


## Sensitivity Classes

15-15-70

### Sensitivity for Abaca Yr 2050

- Very Low
- Low
- Moderate
- High
- Very High

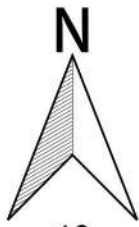


Research Project in Collaboration with:



Mapped by: ABLoreto and DPLoreto (February 2020)

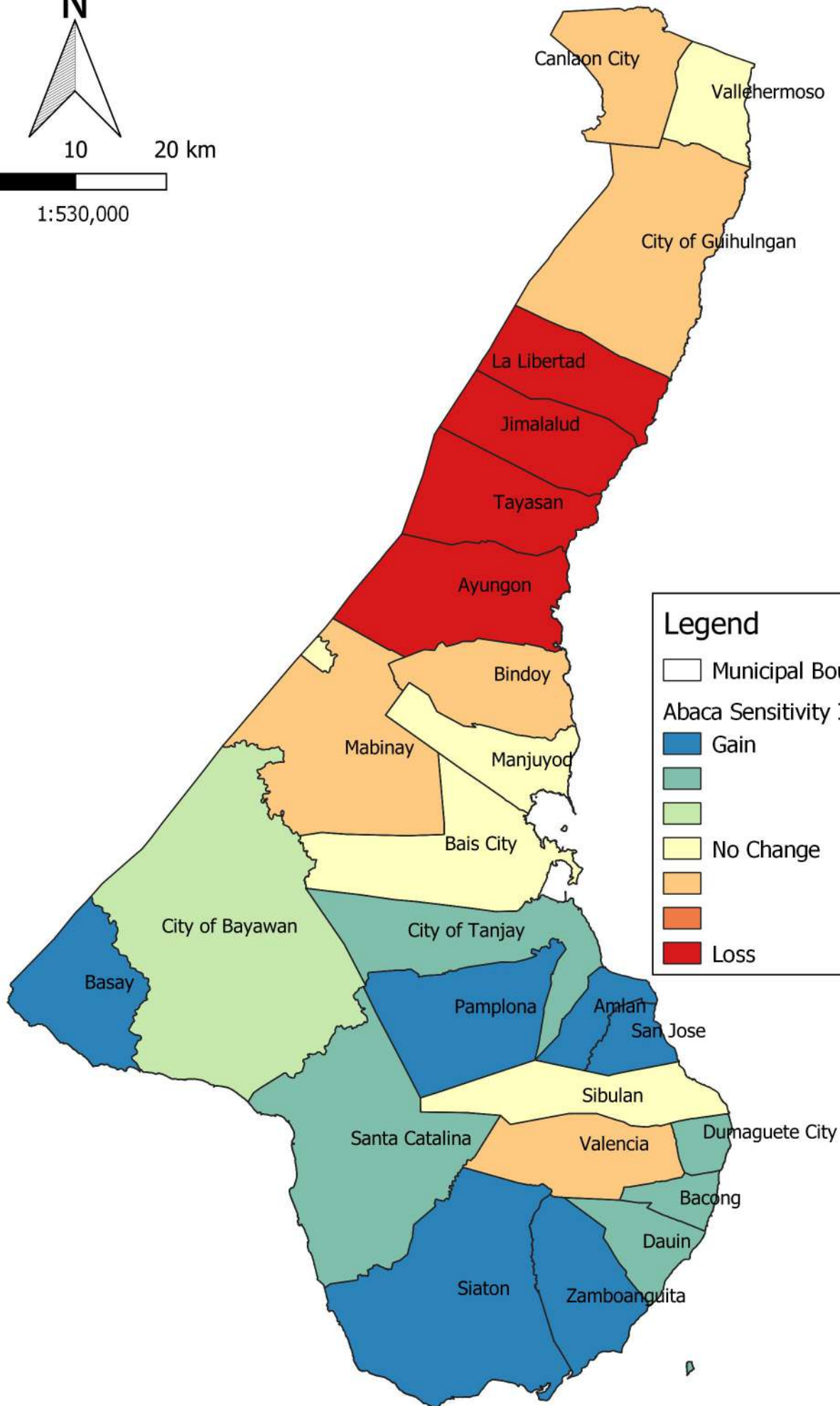
Data Collection Facilitated by: MNVSeriño, DMBañoc, ABLoreto, JPGa, JSToledo & JACavero



0 10 20 km



1:530,000



### Legend

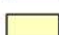
 Municipal Boundary

Abaca Sensitivity Index Yr2050

 Gain

 No Change

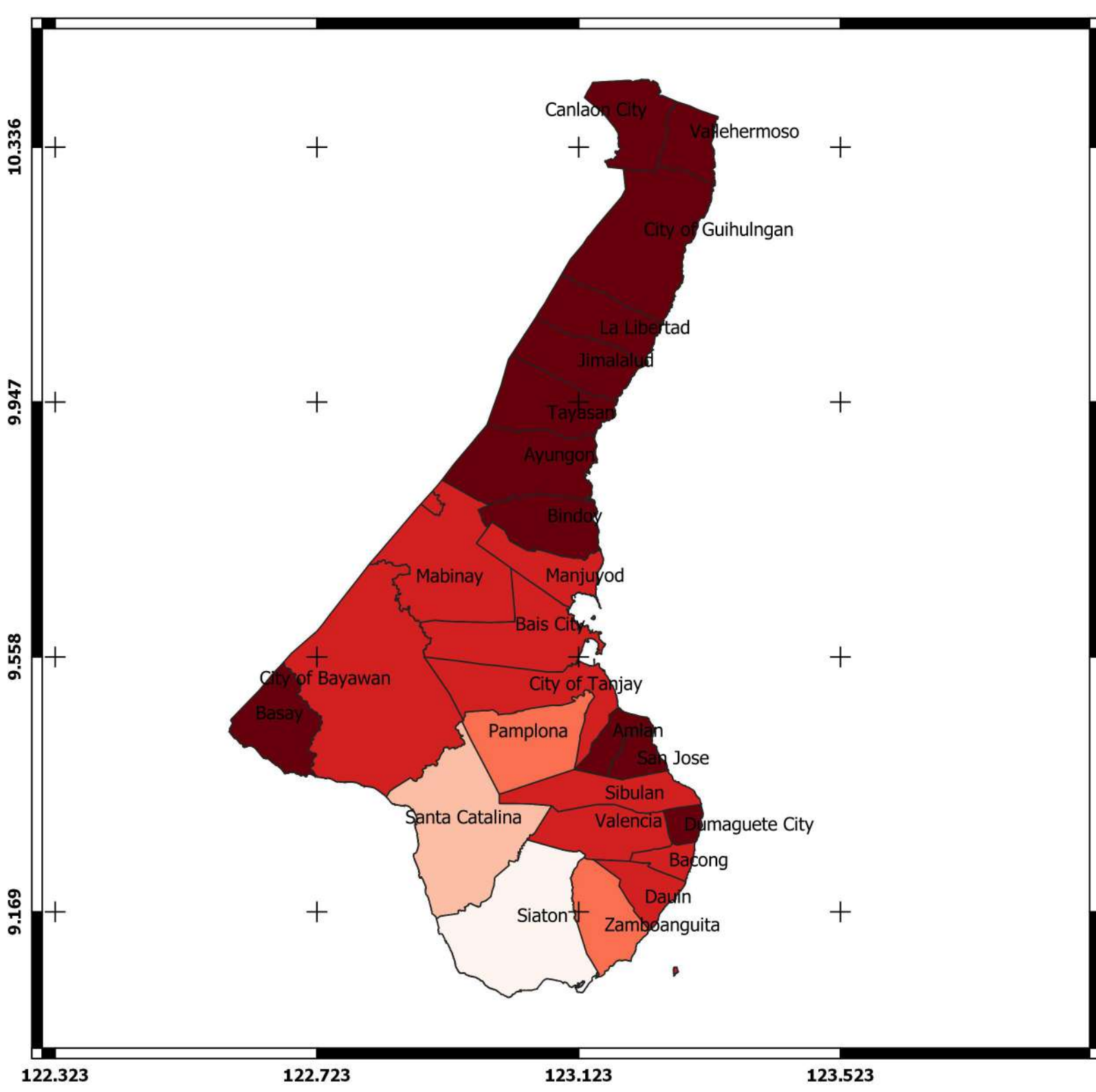
 Loss

 Gain

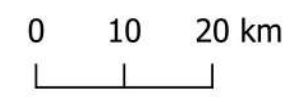
 No Change

 Loss

 Loss



CRS: ESPG: 4326  
(WGS 84)

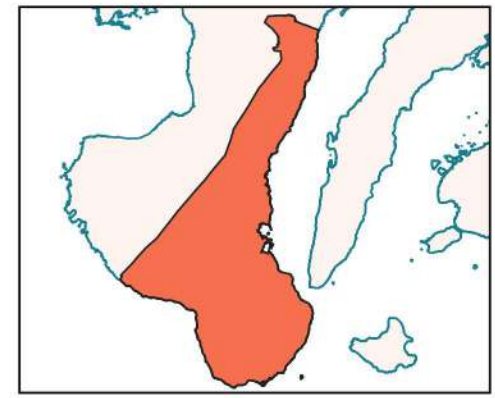


## Sensitivity Classes

15-15-70

### Sensitivity for Banana Yr 2050

- Very Low
- Low
- Moderate
- High
- Very High

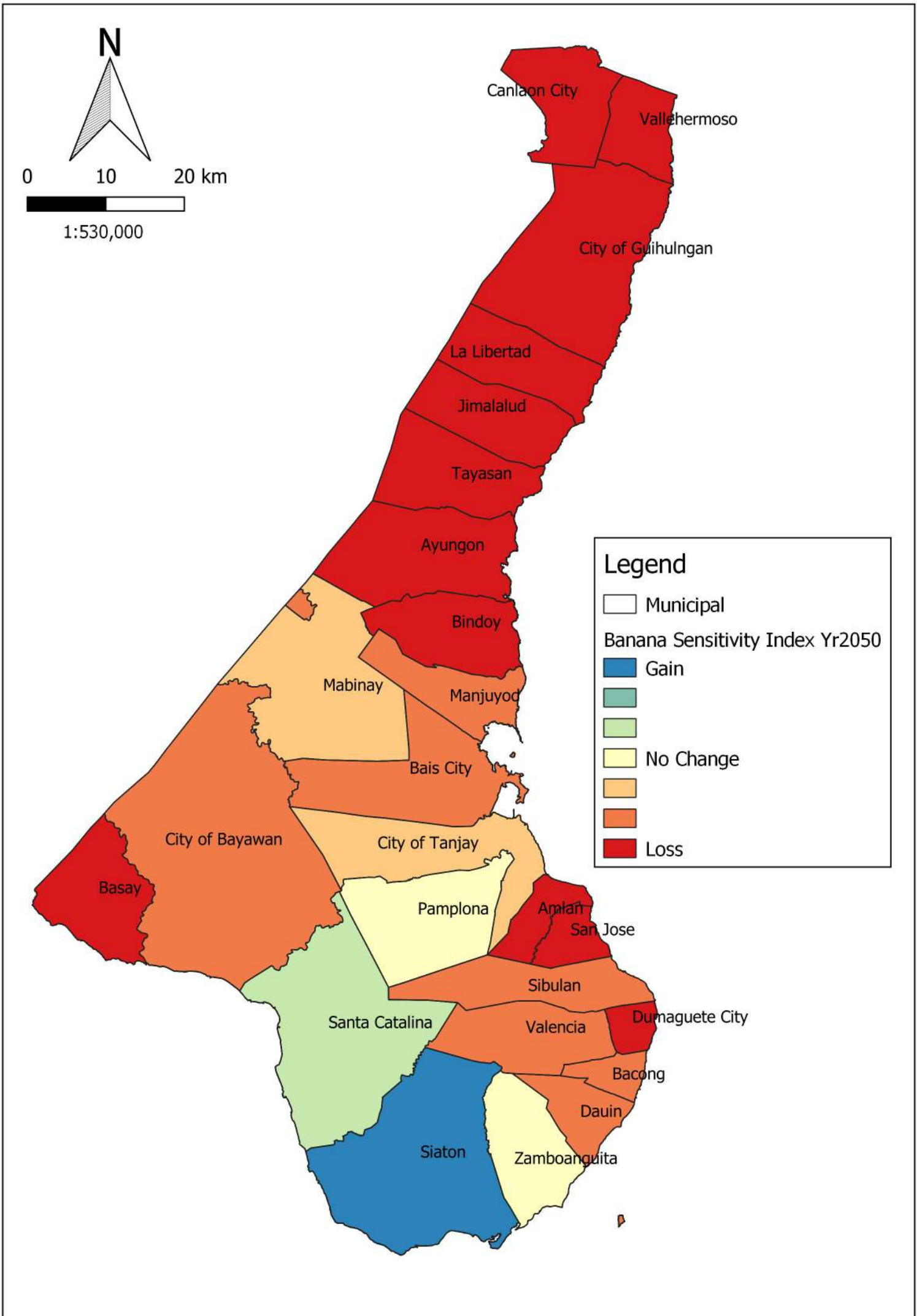


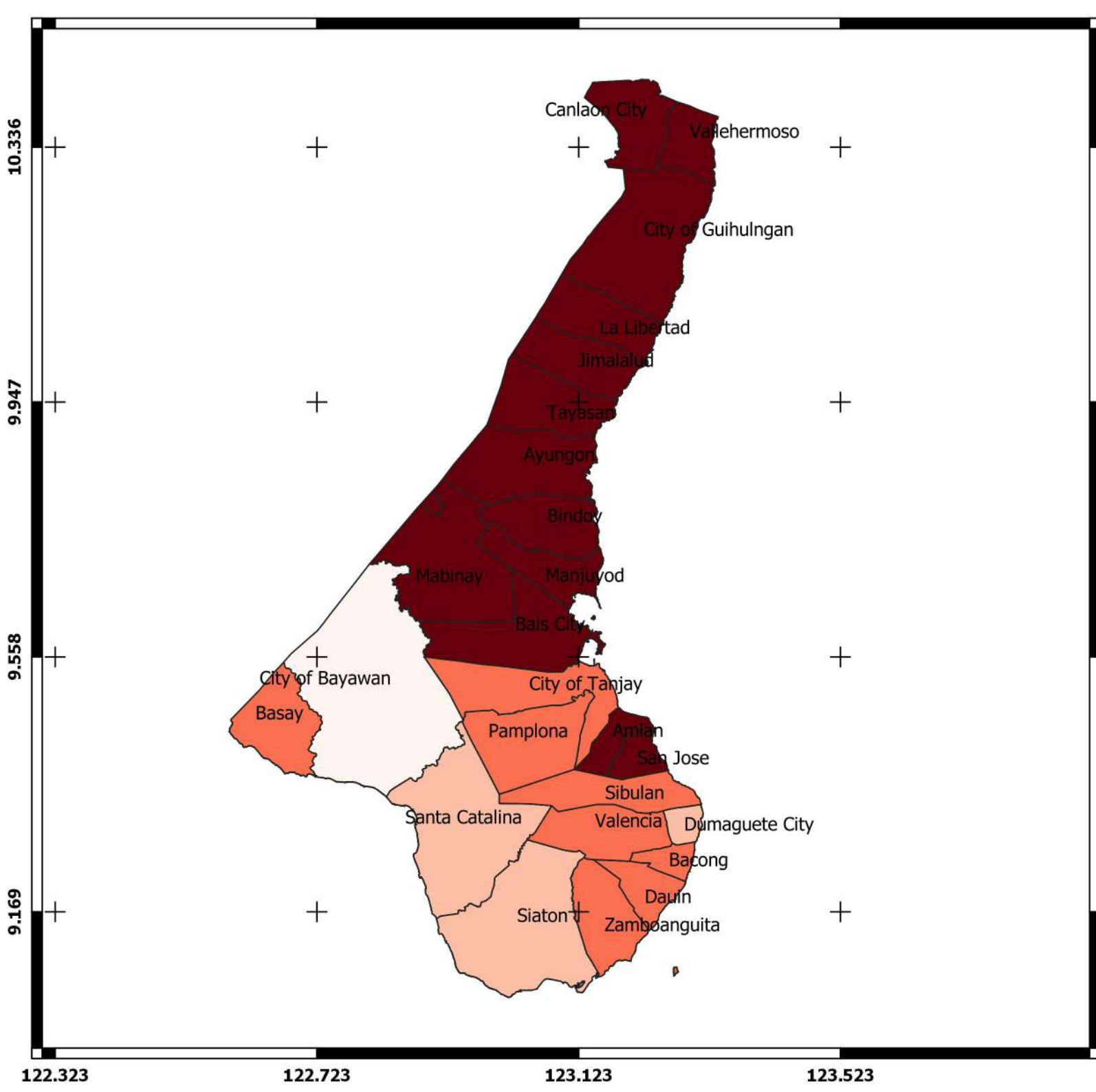
Research Project in Collaboration with:



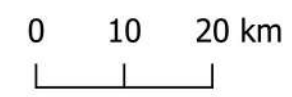
Mapped by: ABLoreto and DPLoreto (February 2020)

Data Collection Facilitated by: MNVSeriño, DMBañoc, ABLoreto, JPGa, JSToledo & JACavero





CRS: ESPG: 4326  
(WGS 84)

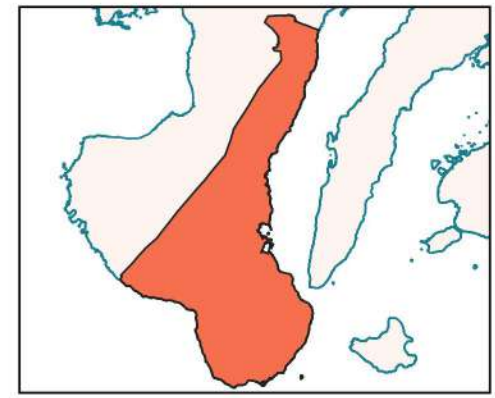


## Sensitivity Classes

15-15-70

### Sensitivity for Cacao Yr 2050

- Very Low
- Low
- Moderate
- High
- Very High

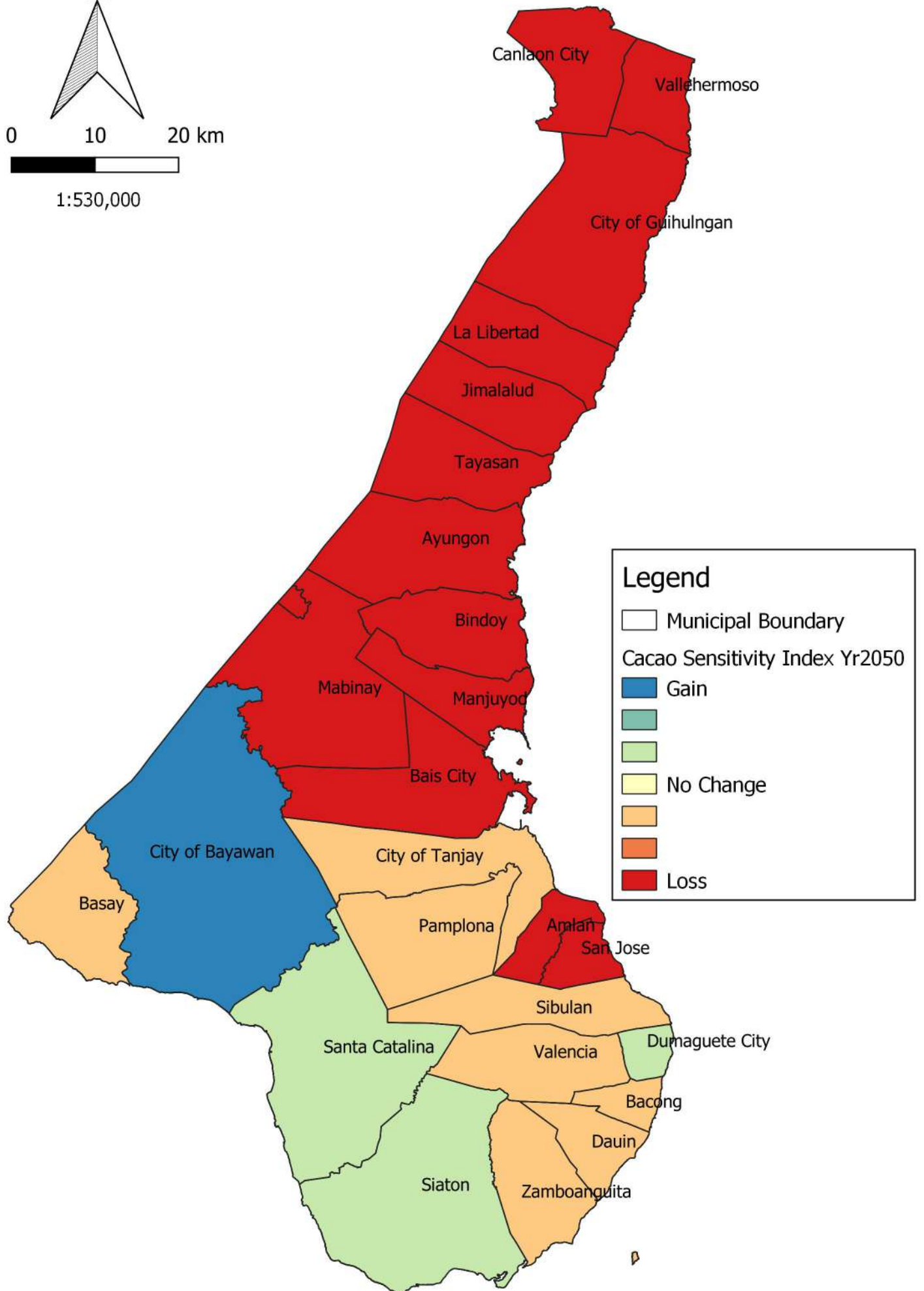
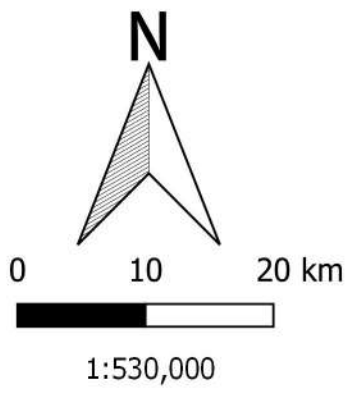


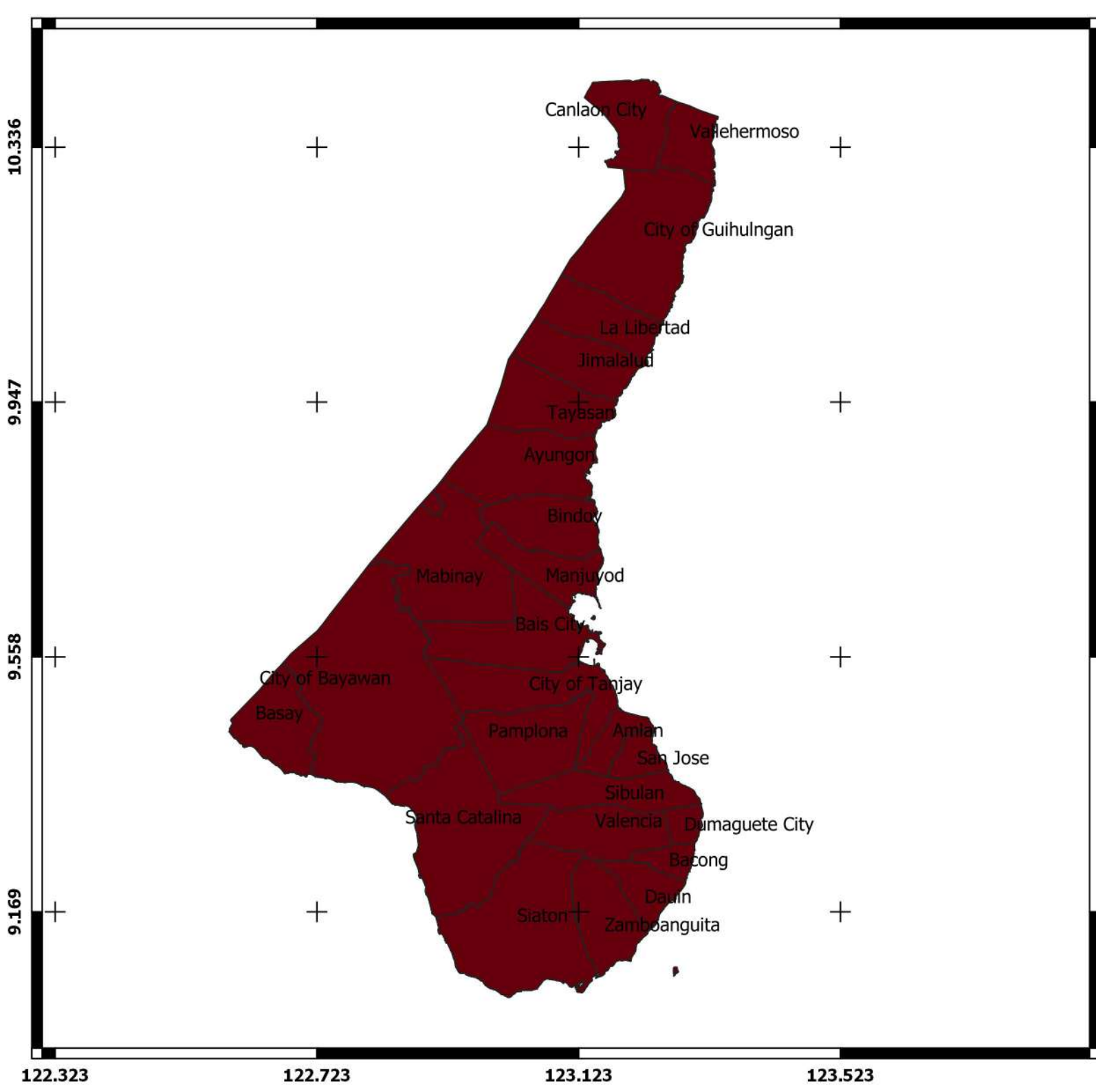
Research Project in Collaboration with:



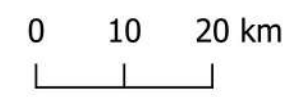
Mapped by: ABLoreto and DPLoreto (February 2020)

Data Collection Facilitated by: MNVSeriño, DMBañoc, ABLoreto, JPGa, JSToledo & JACavero





CRS: ESPG: 4326  
(WGS 84)

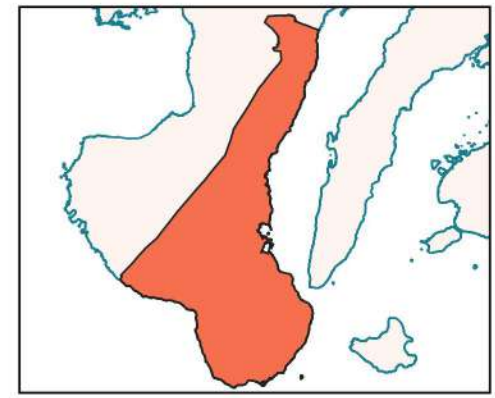


## Sensitivity Classes

15-15-70

### Sensitivity for Cassava Yr 2050

- Very Low
- Low
- Moderate
- High
- Very High

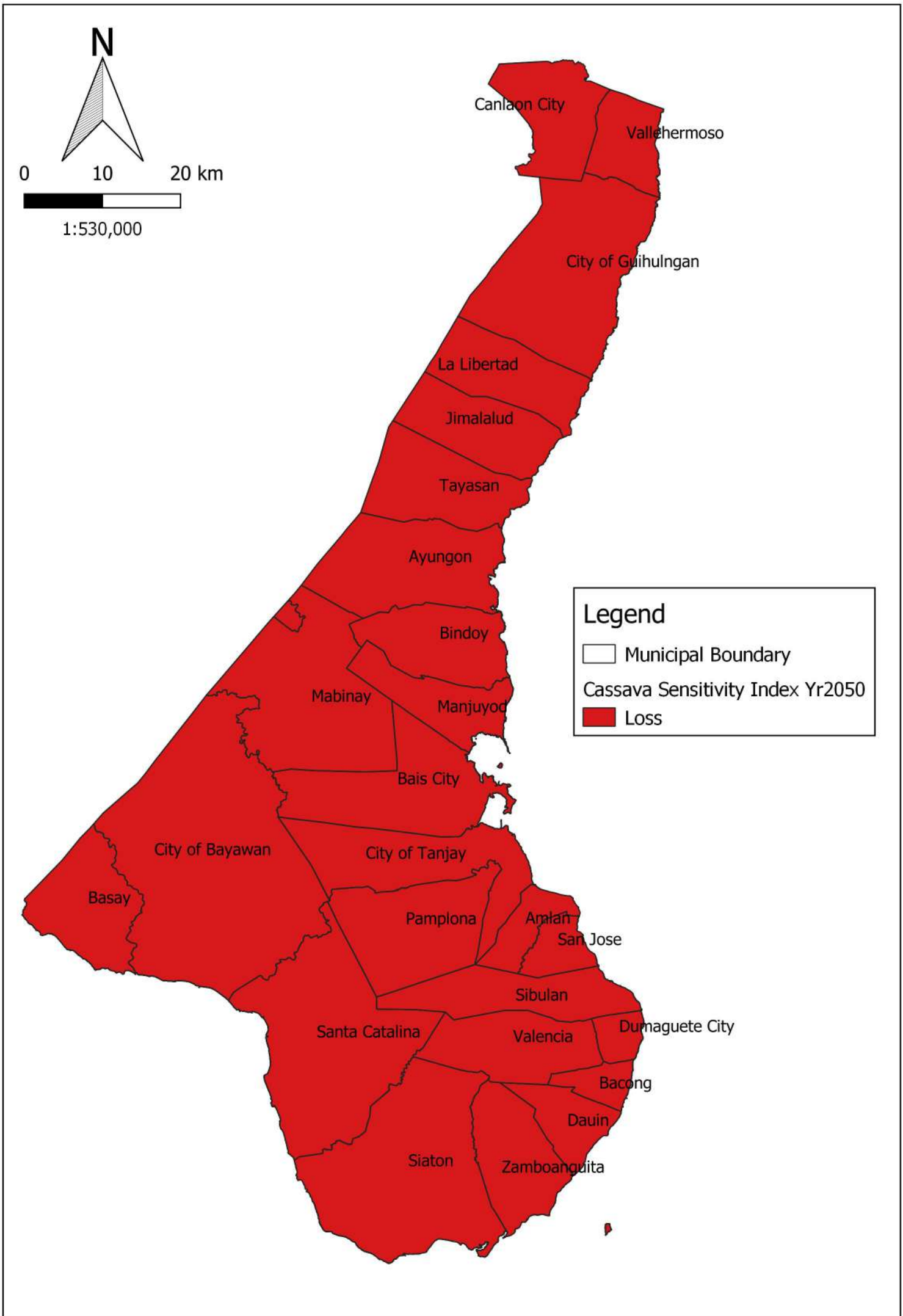


Research Project in Collaboration with:

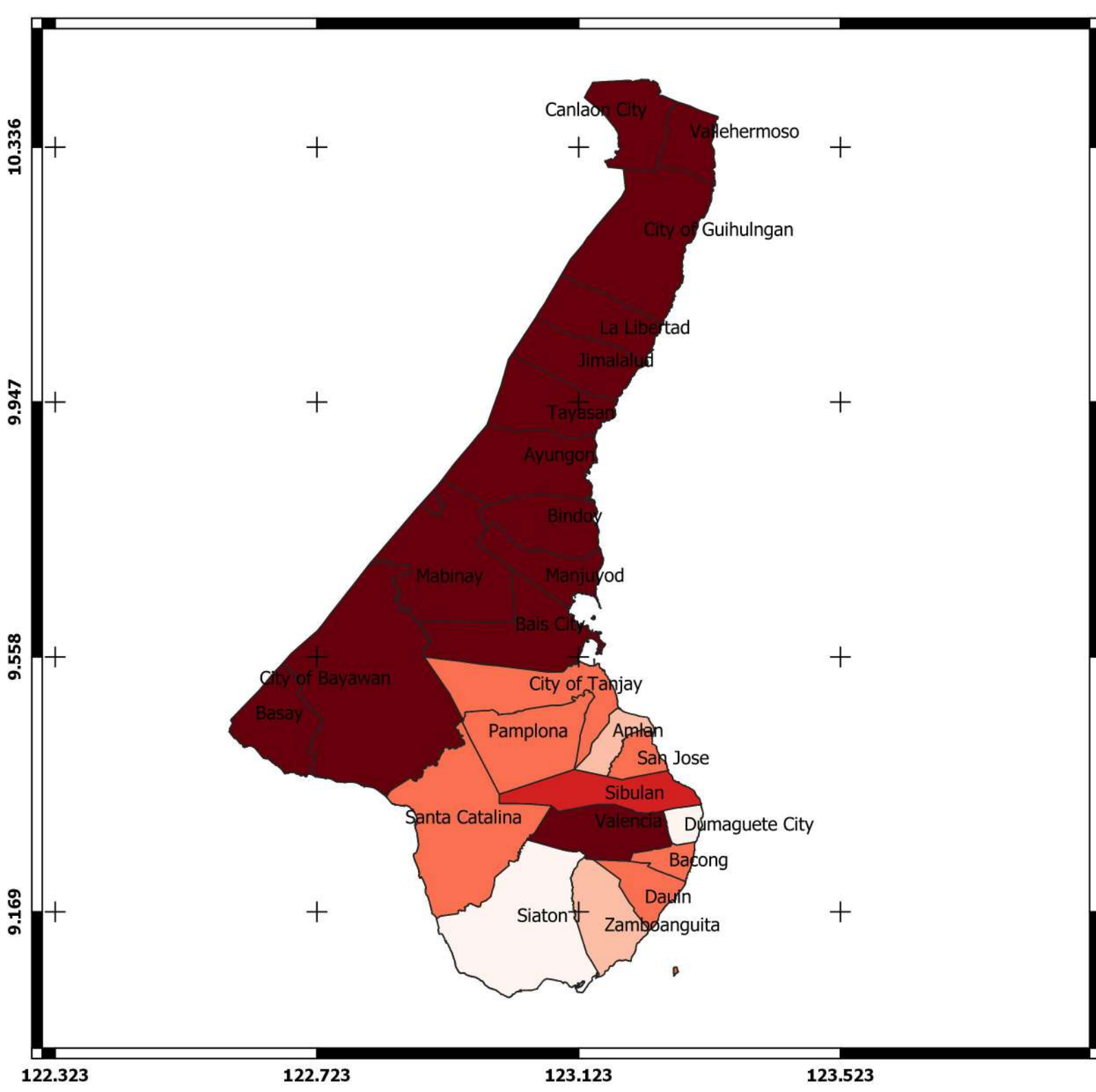


Mapped by: ABLoreto and DPLoreto (February 2020)

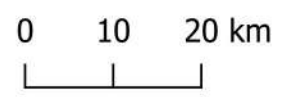
Data Collection Facilitated by: MNVSeriño, DMBañoc, ABLoreto, JPGa, JSToledo & JACavero







CRS: ESPG: 4326  
(WGS 84)

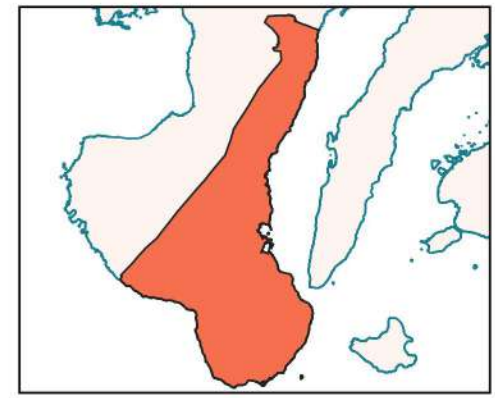


## Sensitivity Classes

15-15-70

### Sensitivity for Coffee Yr 2050

- Very Low
- Low
- Moderate
- High
- Very High

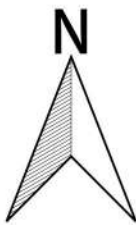


Research Project in Collaboration with:



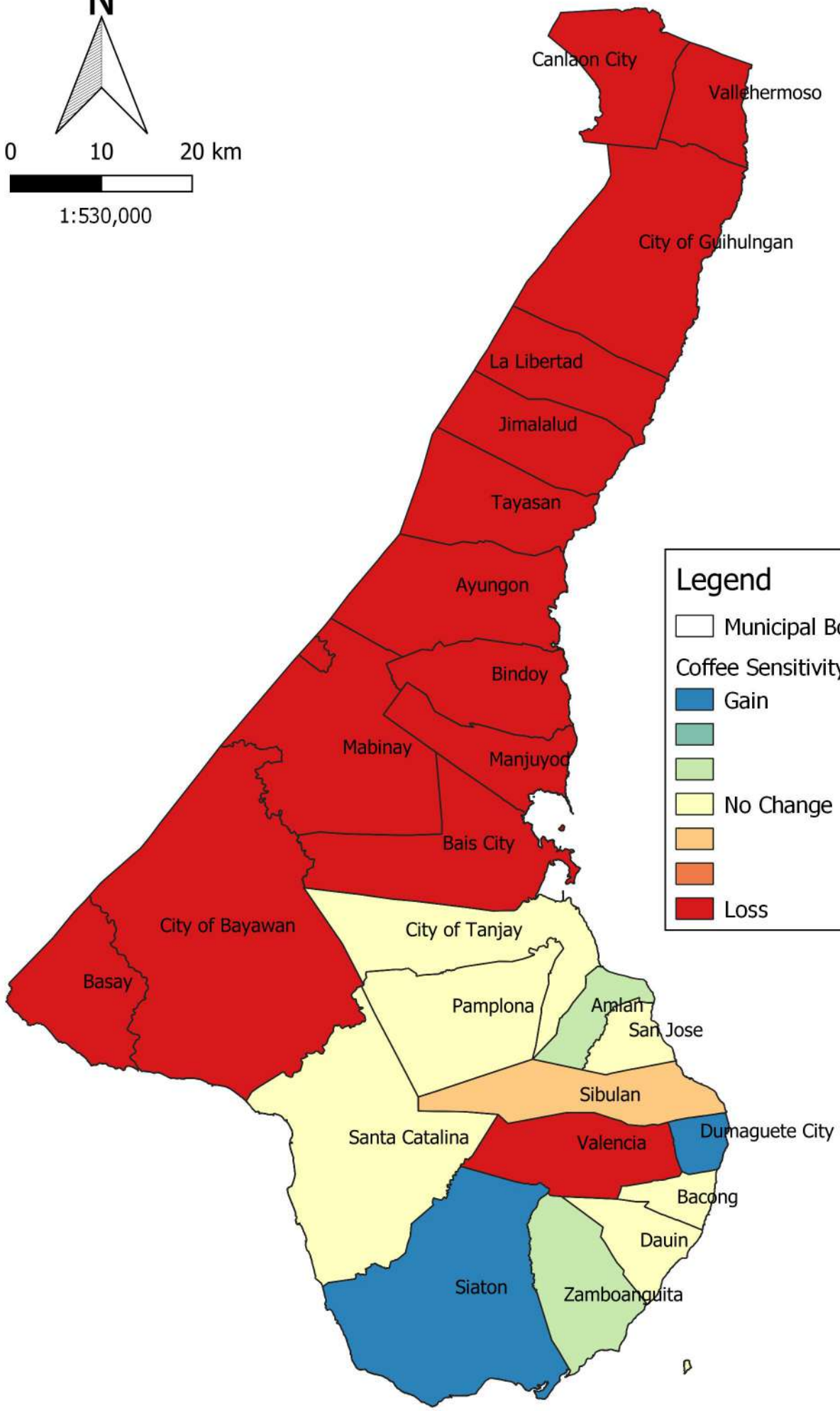
Mapped by: ABLoreto and DPLoreto (February 2020)

Data Collection Facilitated by: MNVSeriño, DMBañoc, ABLoreto, JPGa, JSToledo & JACavero




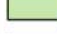

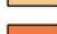


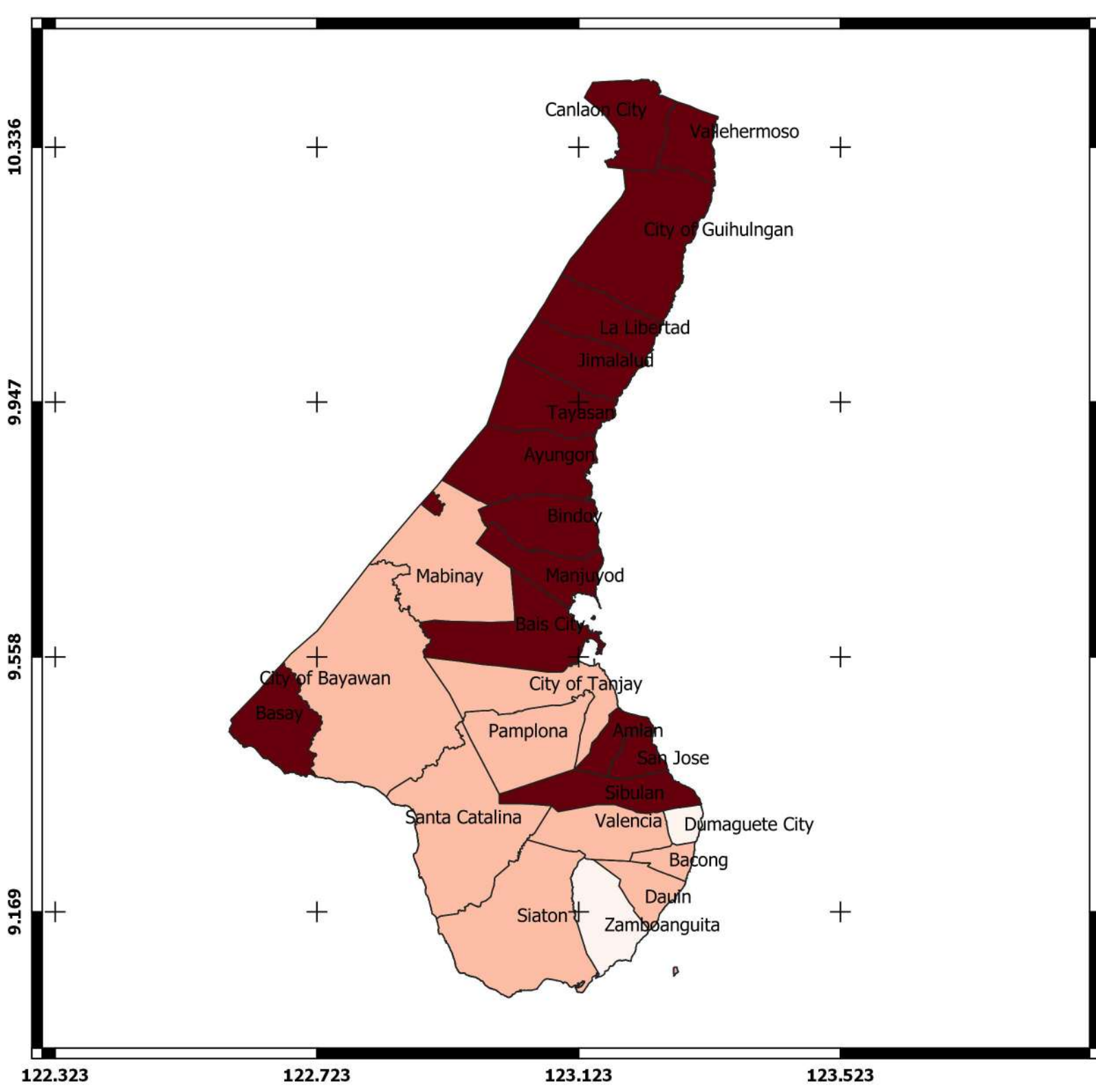
0 10 20 km

1:530,000

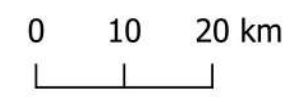


### Legend

-  Municipal Boundary
- Coffee Sensitivity Index Yr2050**
-  Gain
-  No Change
-  No Change
-  Loss
-  Loss



CRS: ESPG: 4326  
(WGS 84)

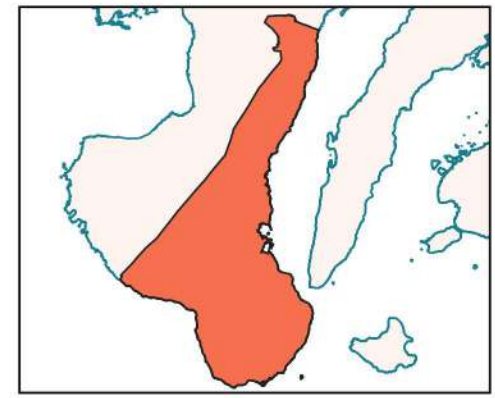


## Sensitivity Classes

15-15-70

### Sensitivity for Corn Yr 2050

- Very Low
- Low
- Moderate
- High
- Very High

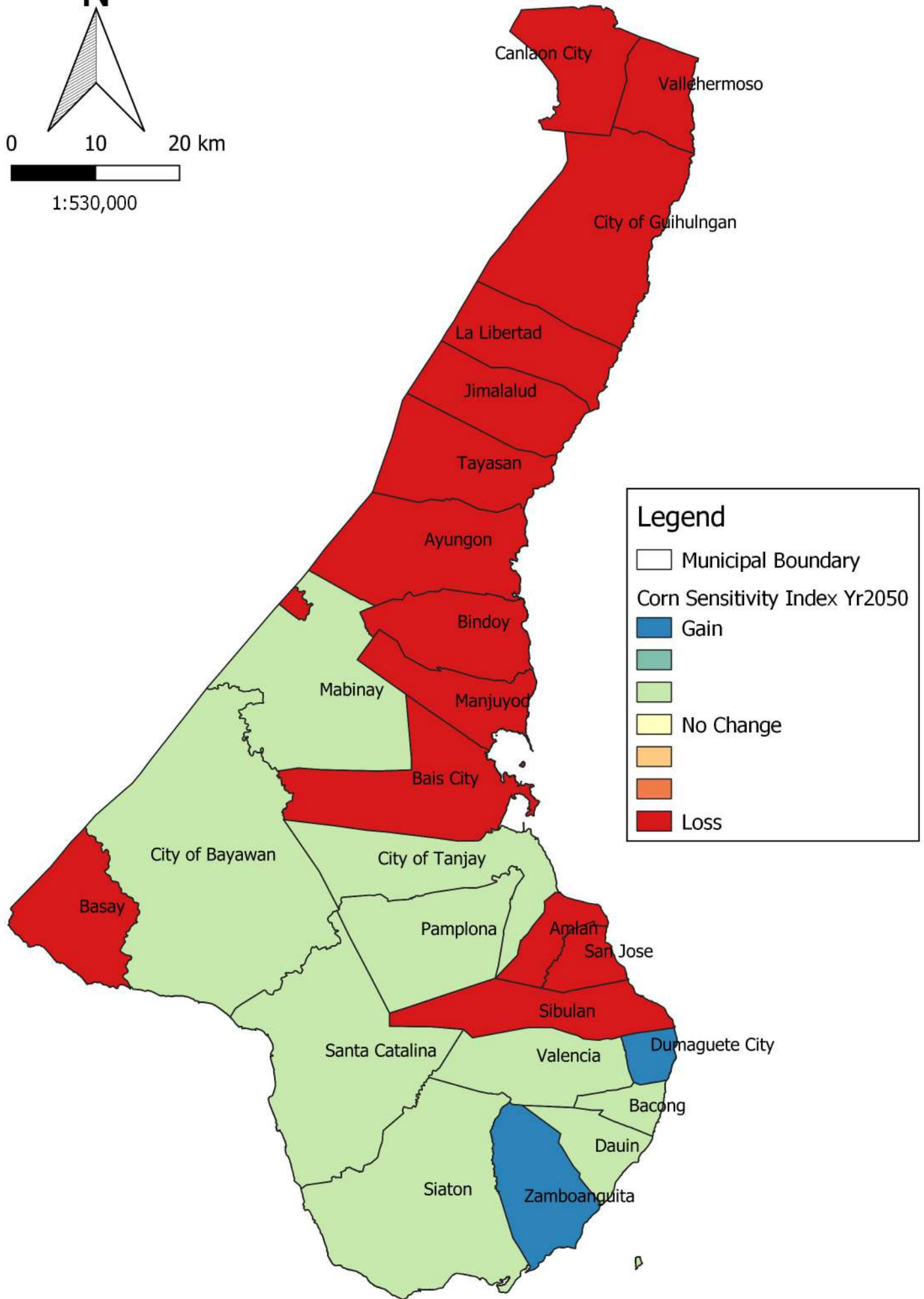
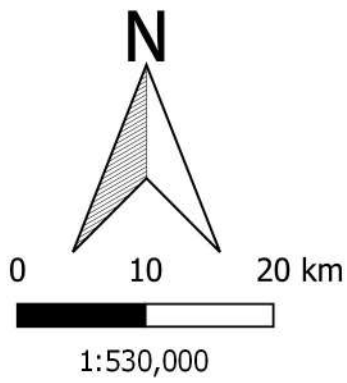


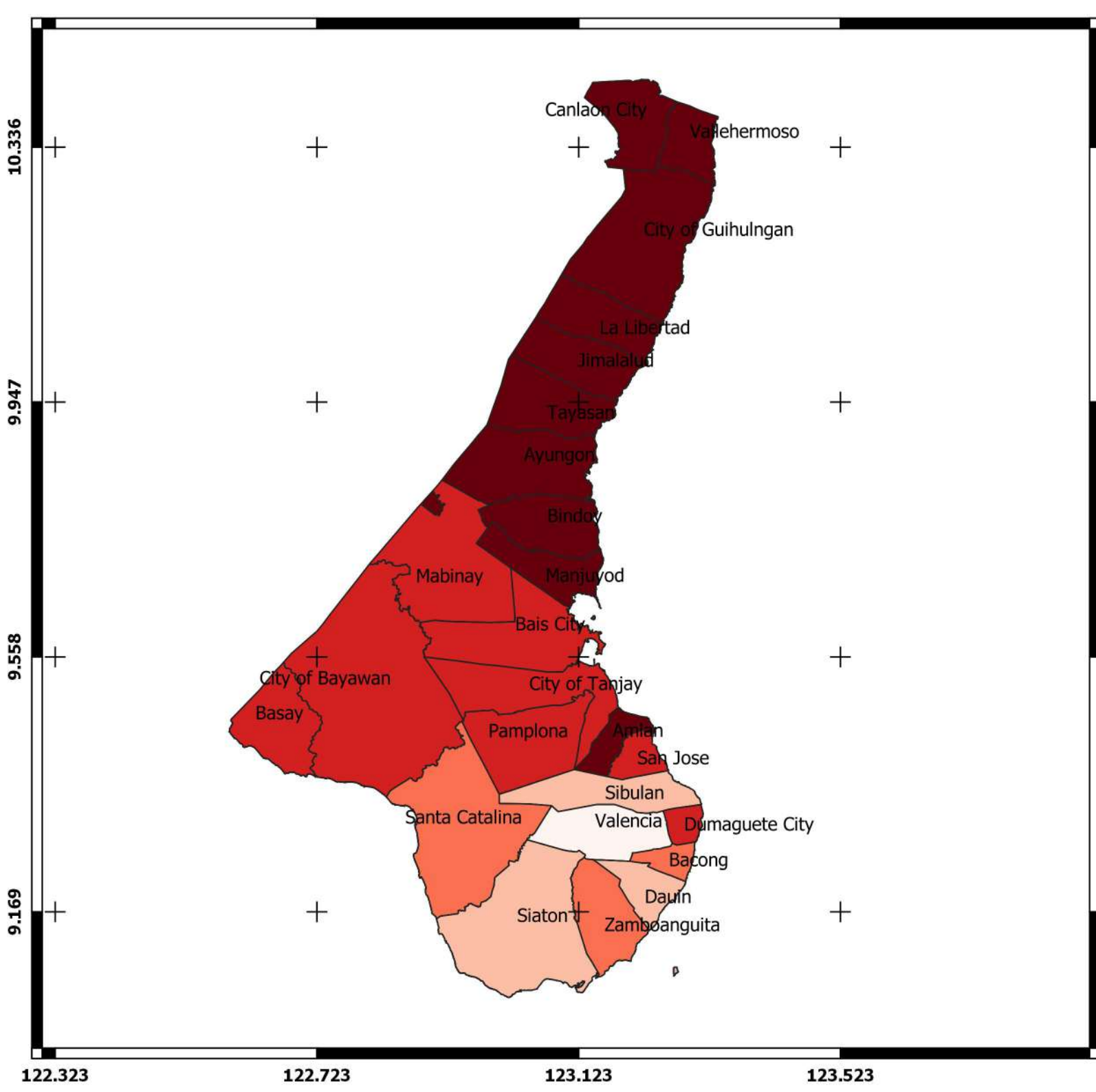
Research Project in Collaboration with:



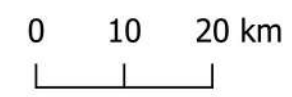
Mapped by: ABLoreto and DPLoreto (February 2020)

Data Collection Facilitated by: MNVSeriño, DMBañoc, ABLoreto, JPGa, JSToledo & JACavero





CRS: ESPG: 4326  
(WGS 84)

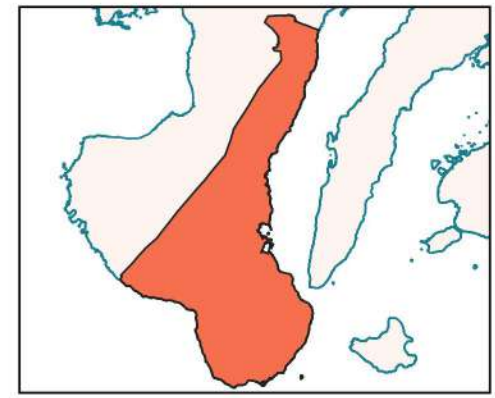


## Sensitivity Classes

15-15-70

### Sensitivity for Mango Yr 2050

- Very Low
- Low
- Moderate
- High
- Very High

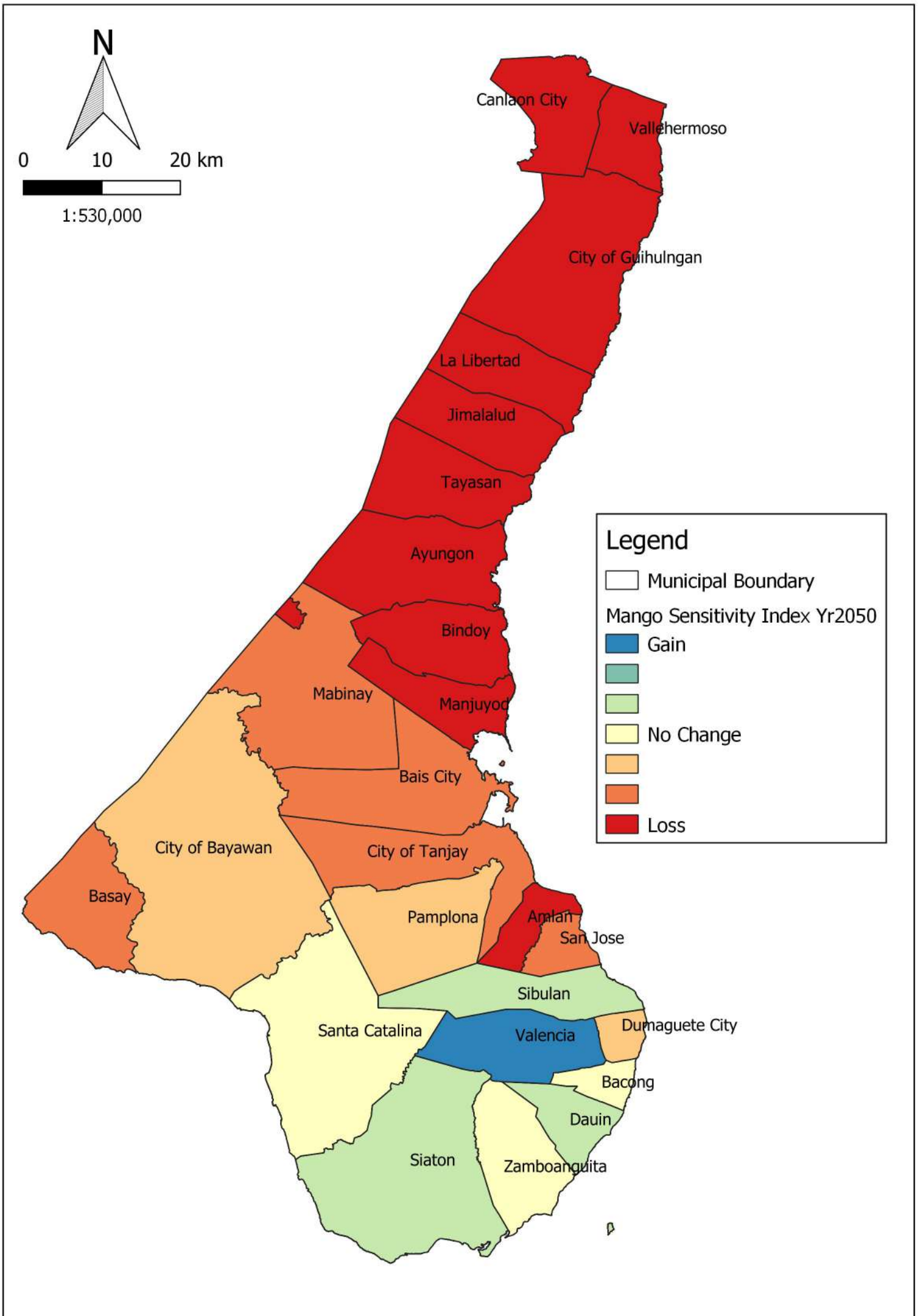


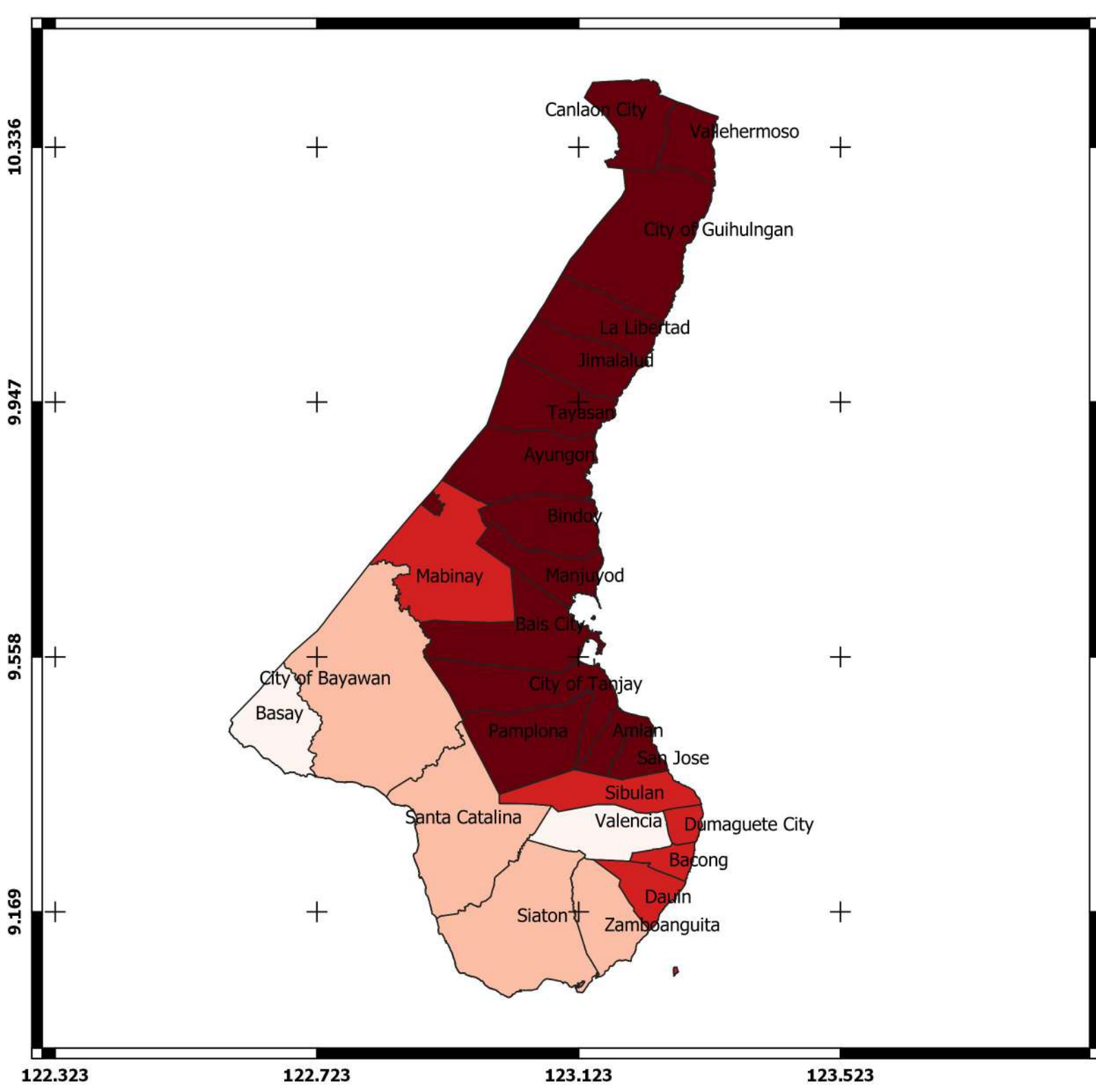
Research Project in Collaboration with:



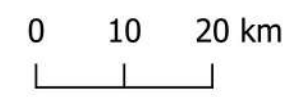
Mapped by: ABLoreto and DPLoreto (February 2020)

Data Collection Facilitated by: MNVSeriño, DMBañoc, ABLoreto, JPGa, JSToledo & JACavero





CRS: ESPG: 4326  
(WGS 84)

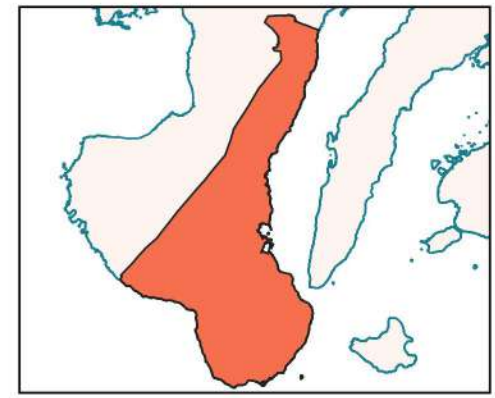


## Sensitivity Classes

15-15-70

### Sensitivity for Pinakbet Yr 2050

- Very Low
- Low
- Moderate
- High
- Very High

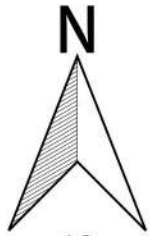


Research Project in Collaboration with:



Mapped by: ABLoreto and DPLoreto (February 2020)

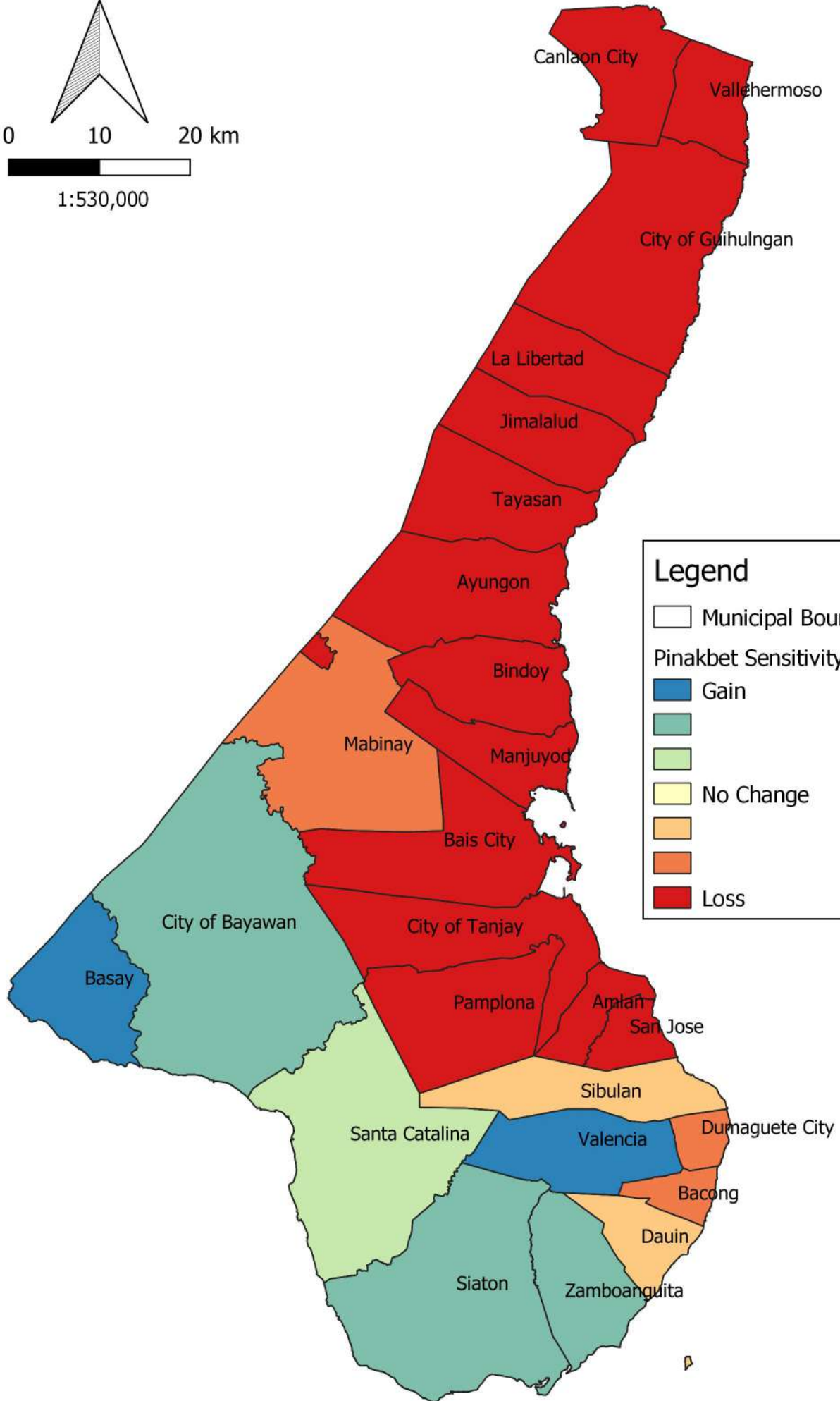
Data Collection Facilitated by: MNVSeriño, DMBañoc, ABLoreto, JPGa, JSToledo & JACavero







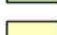

0 10 20 km



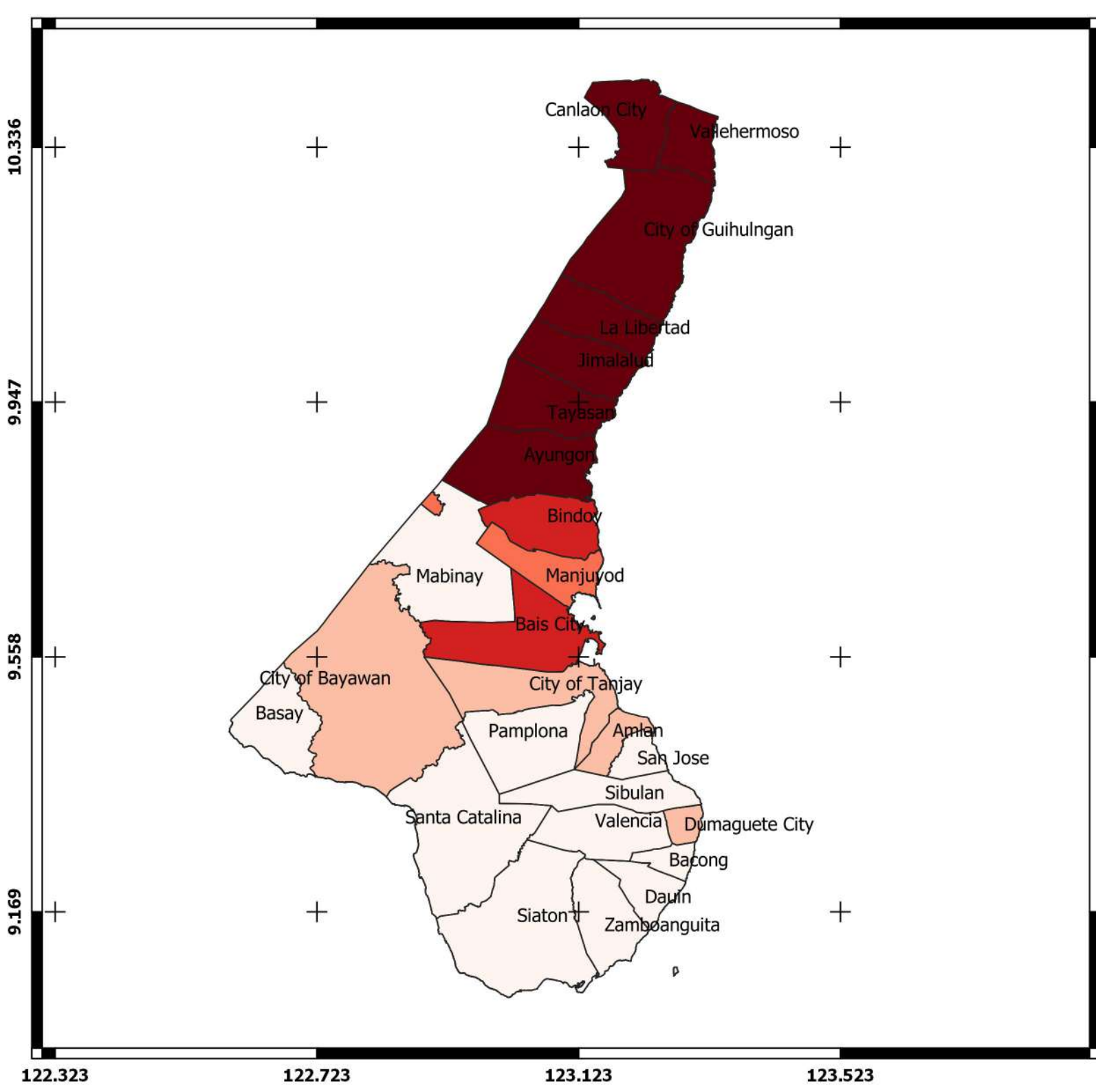
1:530,000



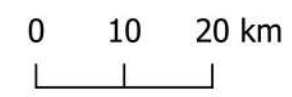
### Legend

-  Municipal Boundary
- Pinakbet Sensitivity Index Yr2050**
-  Gain
-  No Change
-  No Change
-  Loss
-  Loss





CRS: ESPG: 4326  
(WGS 84)

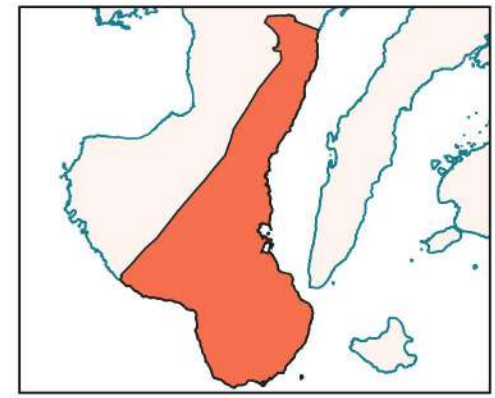


## Sensitivity Classes

15-15-70

### Sensitivity for Rice Yr 2050

- Very Low
- Low
- Moderate
- High
- Very High

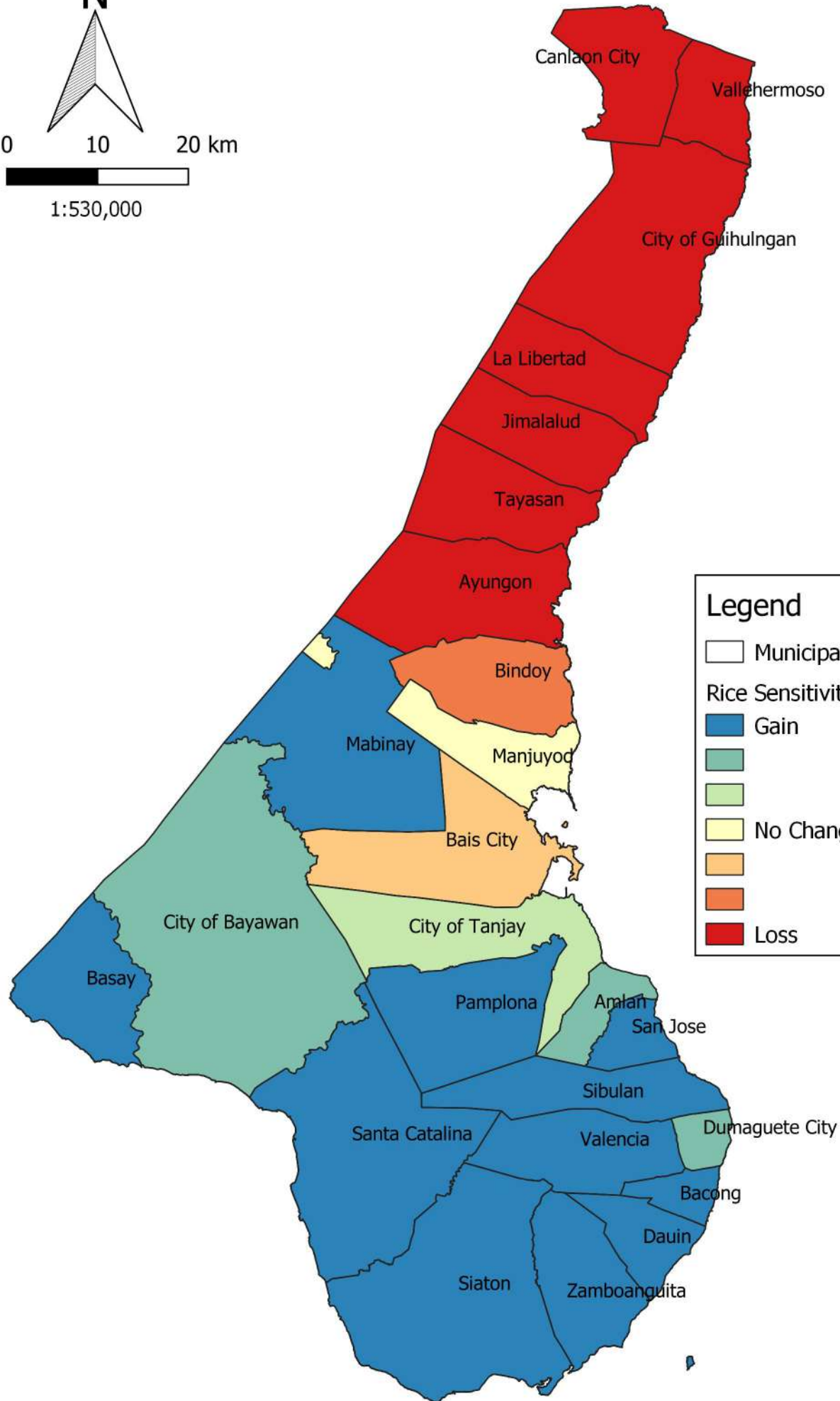
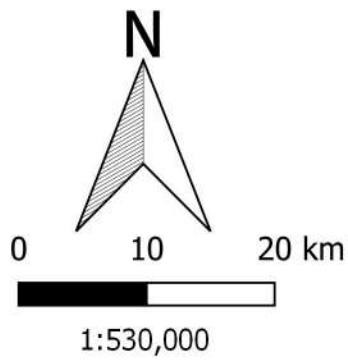


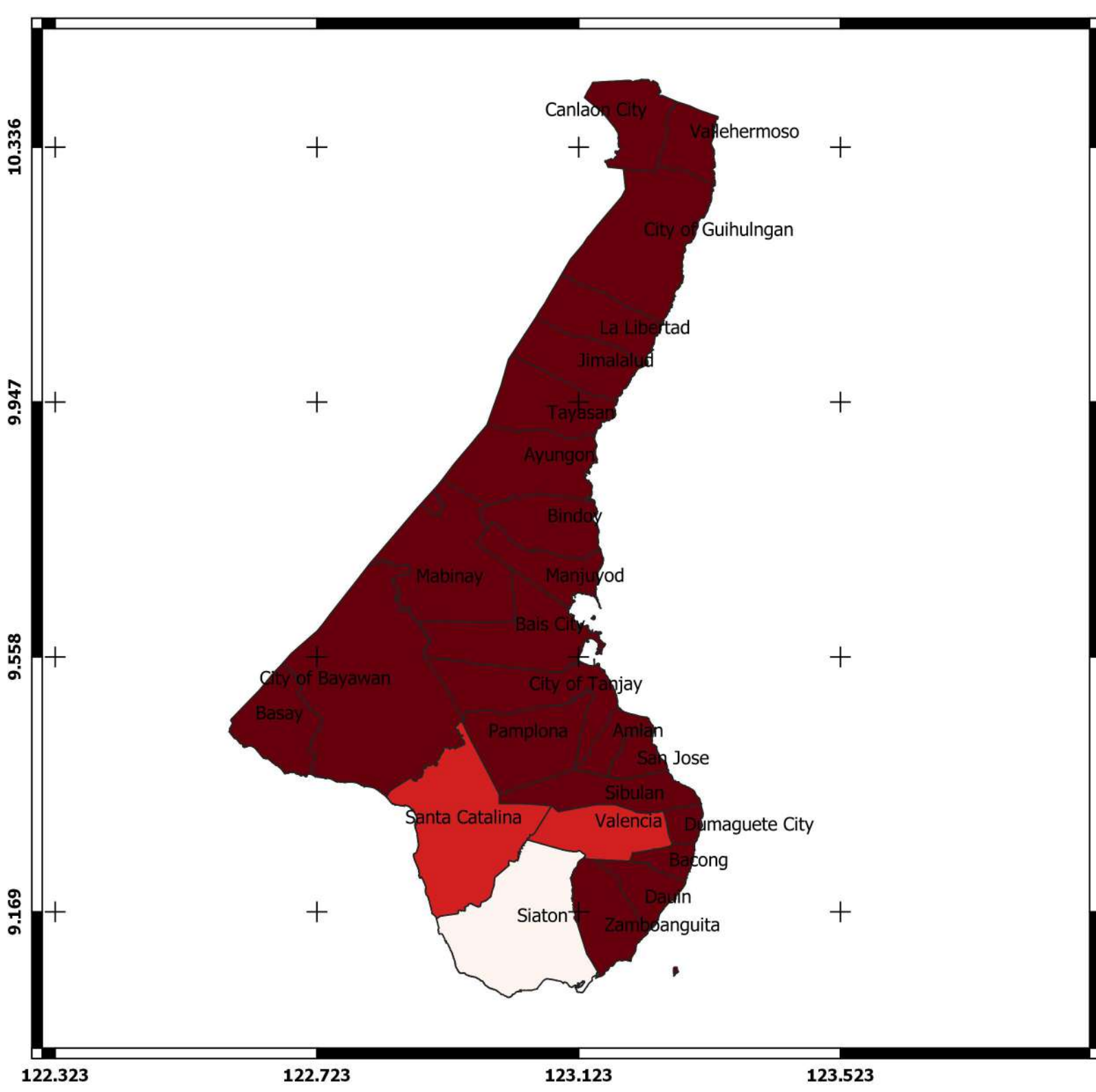
Research Project in Collaboration with:



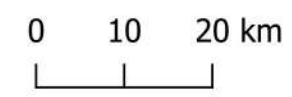
Mapped by: ABLoreto and DPLoreto (February 2020)

Data Collection Facilitated by: MNVSeriño, DMBañoc, ABLoreto, JPGa, JSToledo & JACavero





CRS: ESPG: 4326  
(WGS 84)

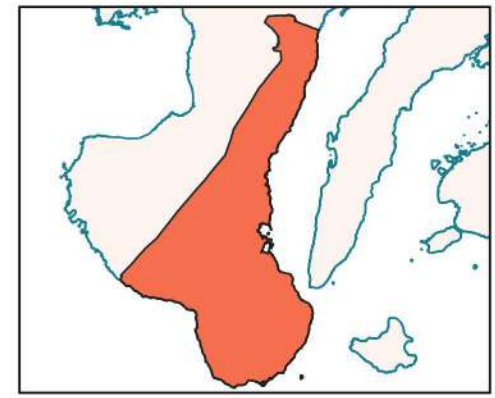


## Sensitivity Classes

15-15-70

### Sensitivity for Sweetpotato Yr 2050

- Very Low
- Low
- Moderate
- High
- Very High

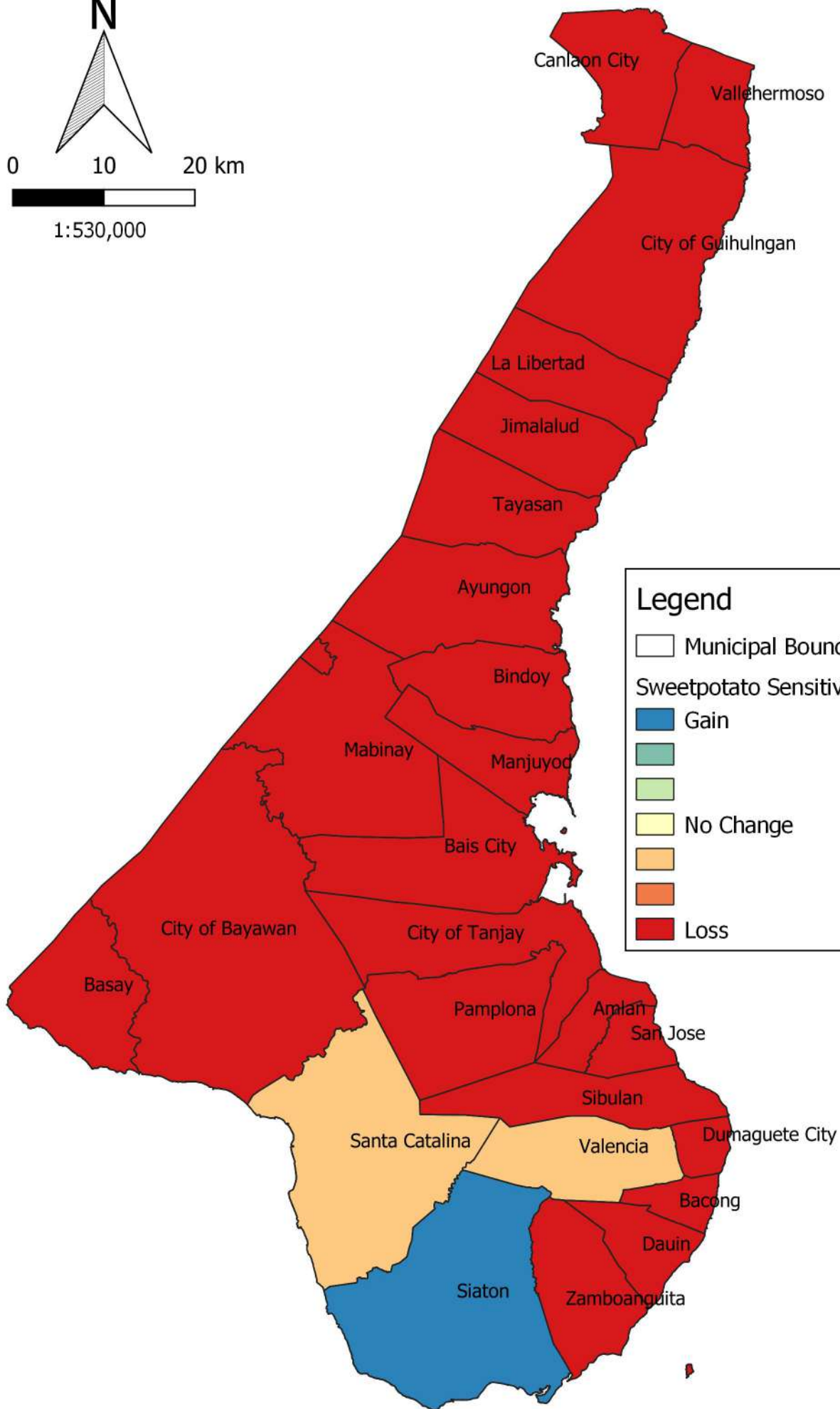
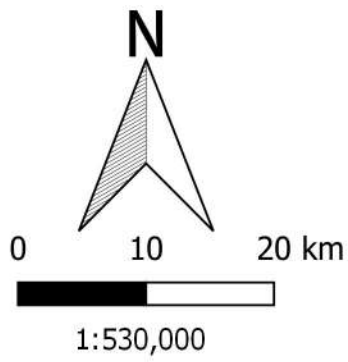


Research Project in Collaboration with:



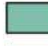


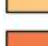


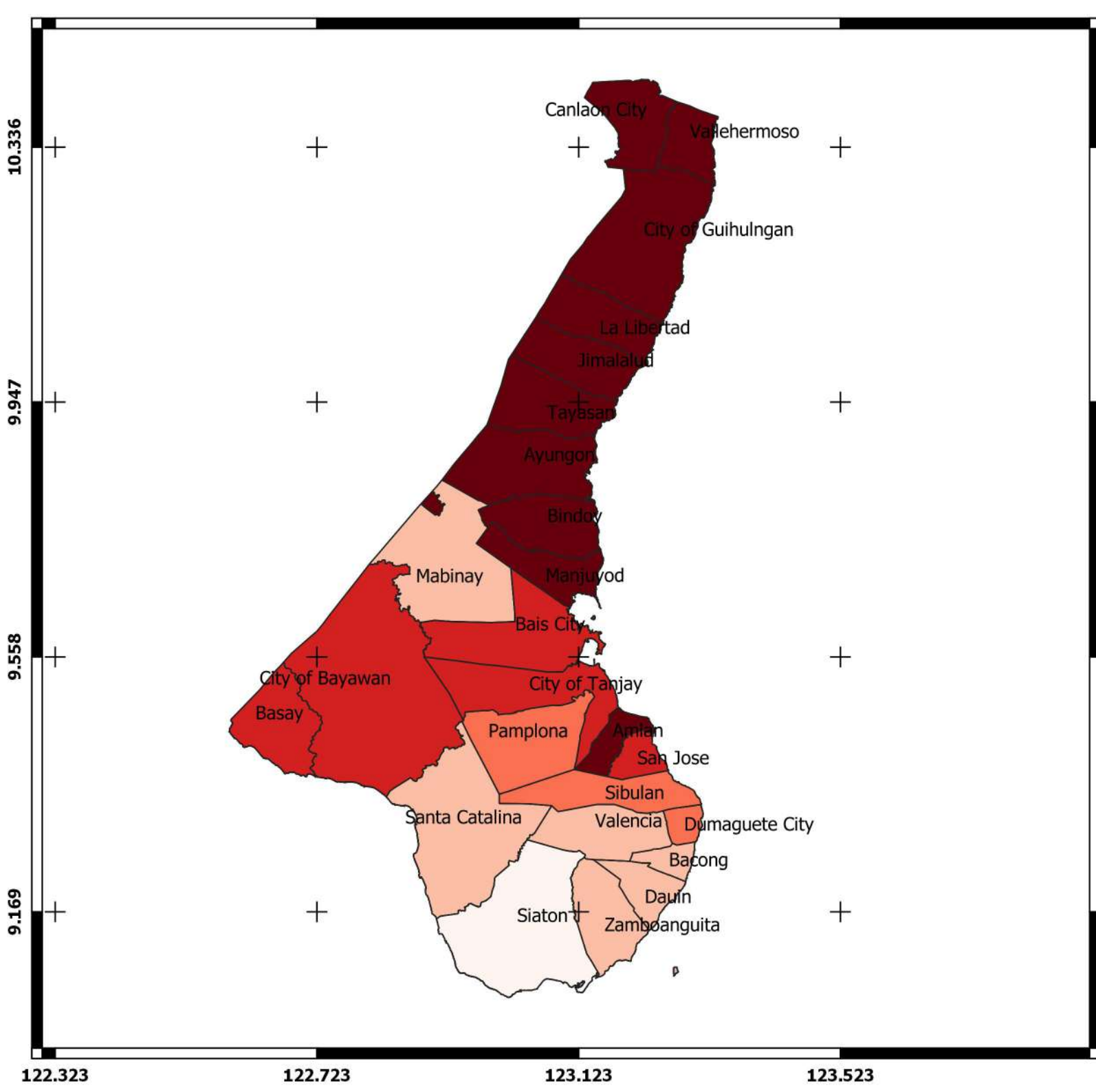
Mapped by: ABLoreto and DPLoreto (February 2020)

Data Collection Facilitated by: MNVSeriño, DMBañoc, ABLoreto, JPGa, JSToledo & JACavero

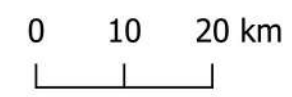


**Legend**

-  Municipal Boundary
- Sweetpotato Sensitivity Index Yr2050**
-  Gain
-  No Change
-  No Change
-  Loss
-  Loss



CRS: ESPG: 4326  
(WGS 84)

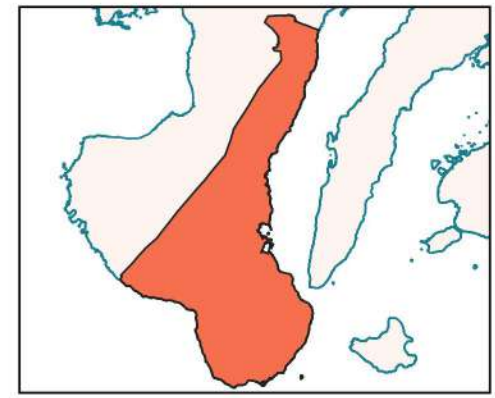


## Sensitivity Classes

15-15-70

### Sensitivity for Sugarcane Yr 2050

- Very Low
- Low
- Moderate
- High
- Very High



Research Project in Collaboration with:



Mapped by: ABLoreto and DPLoreto (February 2020)

Data Collection Facilitated by: MNVSeriño, DMBañoc, ABLoreto, JPGa, JSToledo & JACavero

